

- NOTES:
- ENCLOSURE SYSTEM IS 2000MM TALL 600MM DEEP.
 - DRIVE SIZE SHOWN:

INPUT VOLTAGE	NORMAL DUTY RATING
400	850...1250kW
480	1250...1800HP
600	1100...1500HP
690	1000...1400kW

DIMENSIONS IN MM
UNLESS OTHERWISE SPECIFIED:
DIMENSIONS & TOLERANCING IN ACCORDANCE WITH ASME Y14.5-2009
ALL UNTOLERANCED DIMENSIONS ARE BASIC AND CONTROLLED BY THE CAD MODEL AND CONTROLLED SIMULTANEOUSLY.

Rockwell Automation

PF755 TR/TL AFE DRIVES FRAME10
INSTALLATION SPECIFICATION

Drawn by: AFTUAZON Date: NOV-07-2016

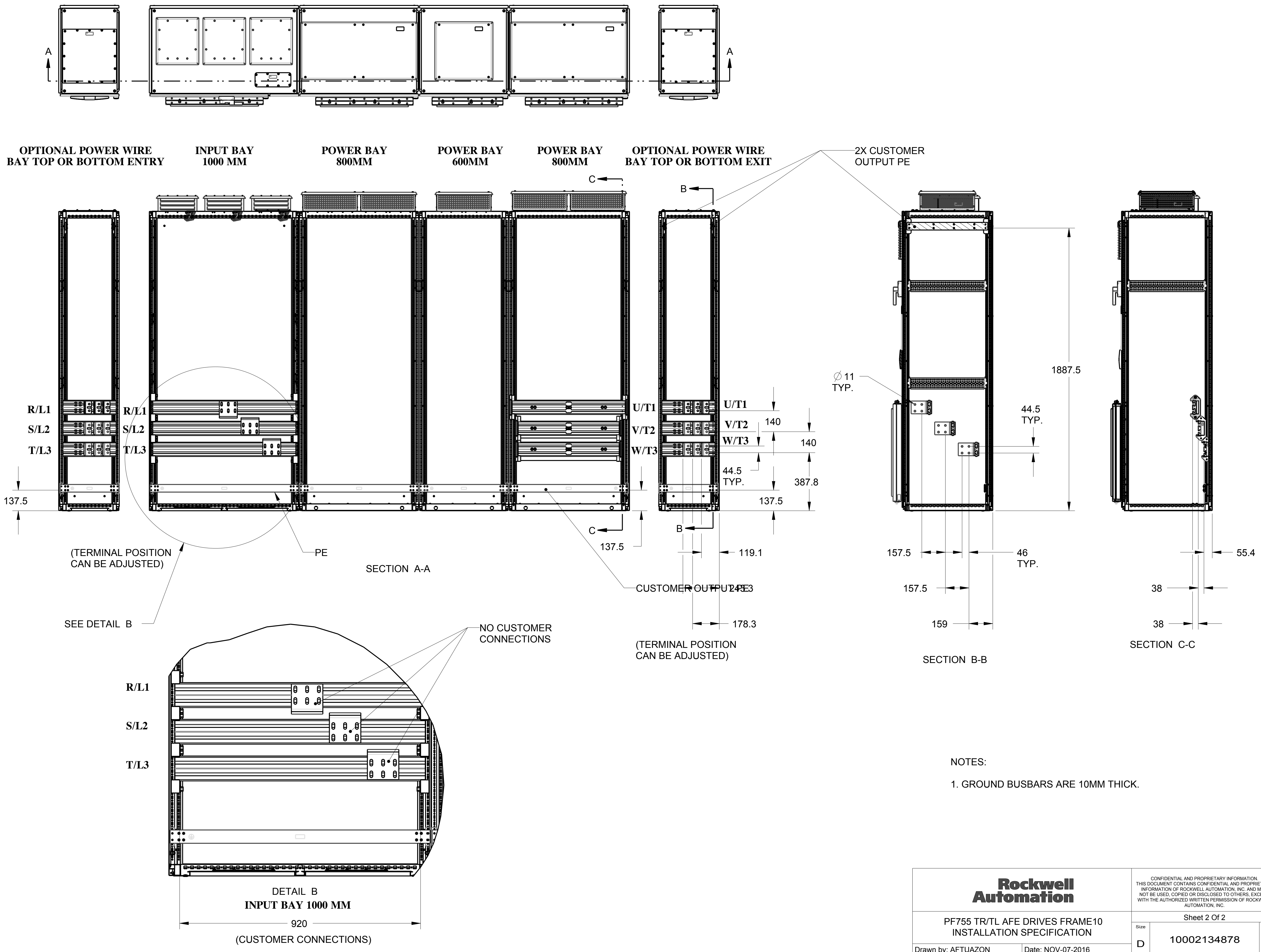
CONFIDENTIAL AND PROPRIETARY INFORMATION
THIS DOCUMENT CONTAINS CONFIDENTIAL AND PROPRIETARY INFORMATION OF ROCKWELL AUTOMATION, INC. AND MAY NOT BE USED, COPIED OR DISCLOSED TO OTHERS, EXCEPT WITH THE AUTHORIZED WRITTEN PERMISSION OF ROCKWELL AUTOMATION, INC.

Sheet 1 Of 2

Size: D 10002134878 Ver: 01

1 2 3 4 5 6 7 8

A
B
C
D
E
F
G
H



		<small>CONFIDENTIAL AND PROPRIETARY INFORMATION THIS DOCUMENT CONTAINS CONFIDENTIAL AND PROPRIETARY INFORMATION OF ROCKWELL AUTOMATION, INC. AND MAY NOT BE USED, COPIED OR DISCLOSED TO OTHERS, EXCEPT WITH THE AUTHORIZED WRITTEN PERMISSION OF ROCKWELL AUTOMATION, INC.</small>	
		Sheet 2 Of 2	
PF755 TR/TL AFE DRIVES FRAME10 INSTALLATION SPECIFICATION		D	10002134878
Drawn by: AFTUAZON	Date: NOV-07-2016	Ver	01