

A

B

C

D

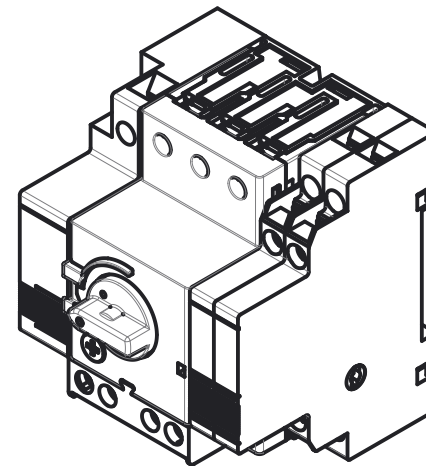
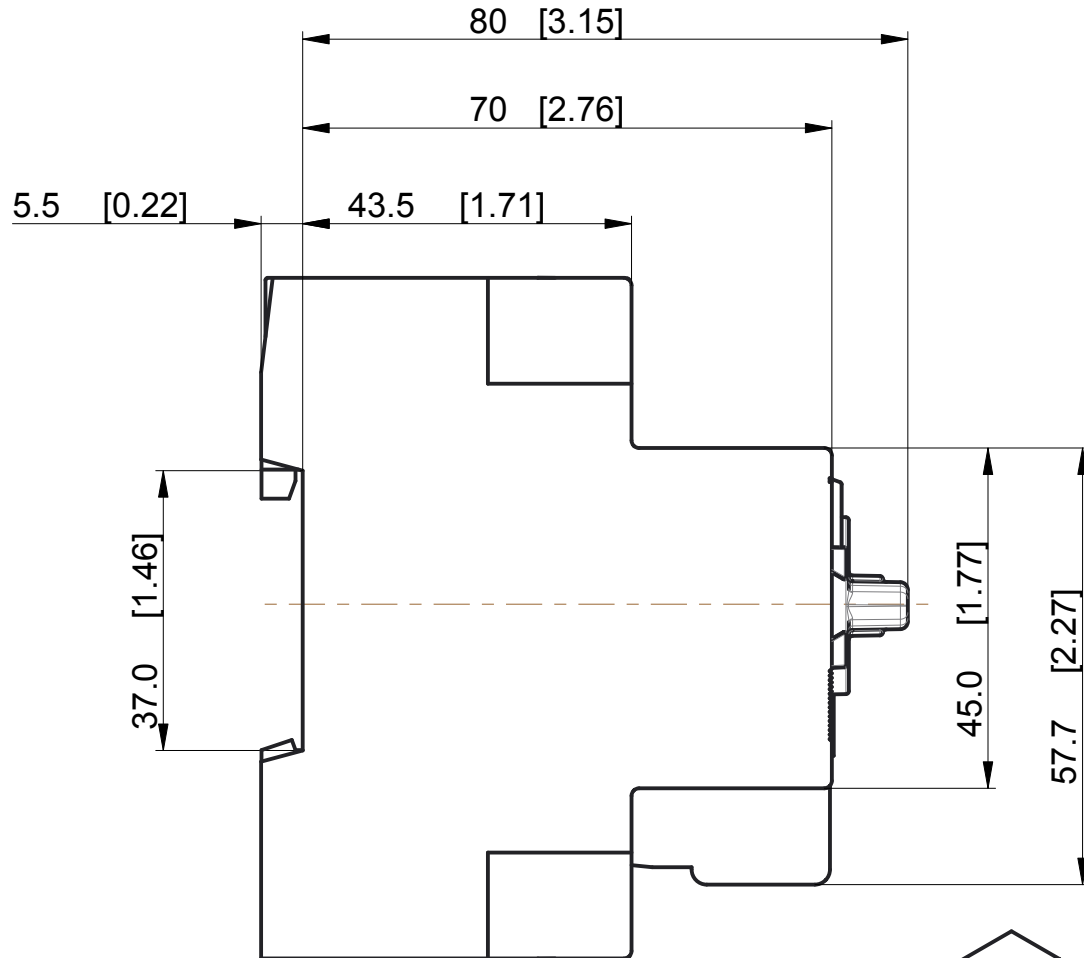
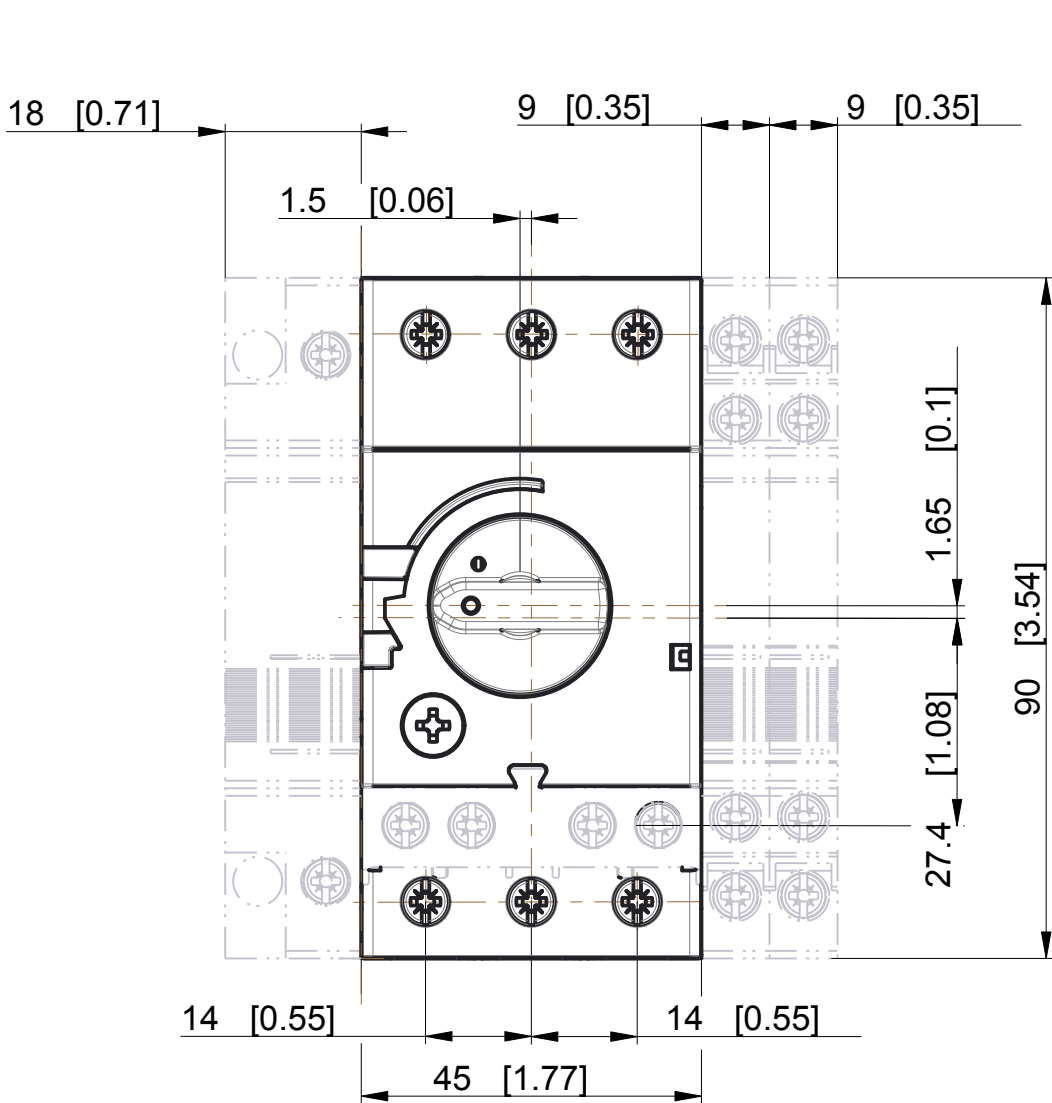
E

F

G

H

MUST COMPLY WITH ROCKWELL  
AUTOMATION ENVIRONMENTAL  
SPECIFICATION 970-20-01



-Dimensions are shown in mm [inches]  
-Dimensions are not intended to be used for manufacturing purposes

WORKMANSHIP STANDARDS		FINISH	MATERIAL		10004706968	PN-527828
ALL UNDIMENSIONED GEOMETRIES ARE CONTROLLED BY THE CAD MODEL. IN CASE OF DIMENSION DISCREPANCY, CAD MODEL OVERRIDES.		<b>Rockwell Automation</b>		CONFIDENTIAL AND PROPRIETARY INFORMATION. THIS DOCUMENT CONTAINS CONFIDENTIAL AND PROPRIETARY INFORMATION OF ROCKWELL AUTOMATION, INC. AND MAY NOT BE USED, COPIED OR DISCLOSED TO OTHERS, EXCEPT WITH THE AUTHORIZED WRITTEN PERMISSION OF ROCKWELL AUTOMATION, INC.		
FIRST ANGLE PROJECTION		140MP-A3E-C16 incl accessories		DATE:2019-05-21		SHEET 1 OF 1
		DESCRIPTION		SIZE	DIR	VER
CREATED BY:C.Gloor		CHANGED BY:C.Gloor		A3	10004723558	00

CRITICAL TO QUALITY CLASSIFICATION TABLE					
P=PERFORMANCE, F=FIT, A=ASSEMBLY X=IDENTIFIES APPLICABLE CLASSIFICATION(S) ENGINEERING AND/OR MANUFACTURING REQUIREMENT REGULATORY REQUIREMENT-CONFORMANCE IS MANDATORY					
COMMENTS	DRAWING ZONE	P	F	A	R
ROHS	G1-H1				X

10004706968	PN-527839
	PN-527838
	PN-527837
	PN-527836
	PN-527835
	PN-527834
	PN-527833
	PN-527832
	PN-527831
10004706968	PN-527830
	PN-527829
10004706968	PN-527828

A

B

C

D

E

F

G

H