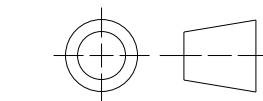


- NOTES:
1. DIMENSIONS SHOWN ARE FOR REFERENCE ONLY. NOT INTENDED FOR MANUFACTURING PURPOSES.
 2. DIMENSIONS IN BRACKETS ARE IN MILLIMETERS.

MUST COMPLY WITH ROCKWELL AUTOMATION ENVIRONMENTAL SPECIFICATION 970-20-01

ALL UNDIMENSIONED GEOMETRIES ARE CONTROLLED BY THE CAD MODEL. IN CASE OF DIMENSION DISCREPANCY, CAD MODEL OVERRIDES.

THIRD ANGLE PROJECTION



CUSTOMER OUTLINE DRAWING
6 POLE CHANGE OVER FRONT/DOOR MOUNT
194E-E100-1756, 100AMP ASSEMBLY

CREATED BY: LEQUENTIN

CHANGED BY: *****

10007866721

CAD MODEL

CONFIDENTIAL AND PROPRIETARY INFORMATION. THIS DOCUMENT CONTAINS CONFIDENTIAL AND PROPRIETARY INFORMATION OF ROCKWELL AUTOMATION, INC. AND MAY NOT BE USED, COPIED OR DISCLOSED TO OTHERS, EXCEPT WITH THE AUTHORIZED WRITTEN PERMISSION OF ROCKWELL AUTOMATION, INC.

DATE: 2024-02-29 SHEET 1 OF 1

SIZE: D1R VER:

D **10007866722** 00