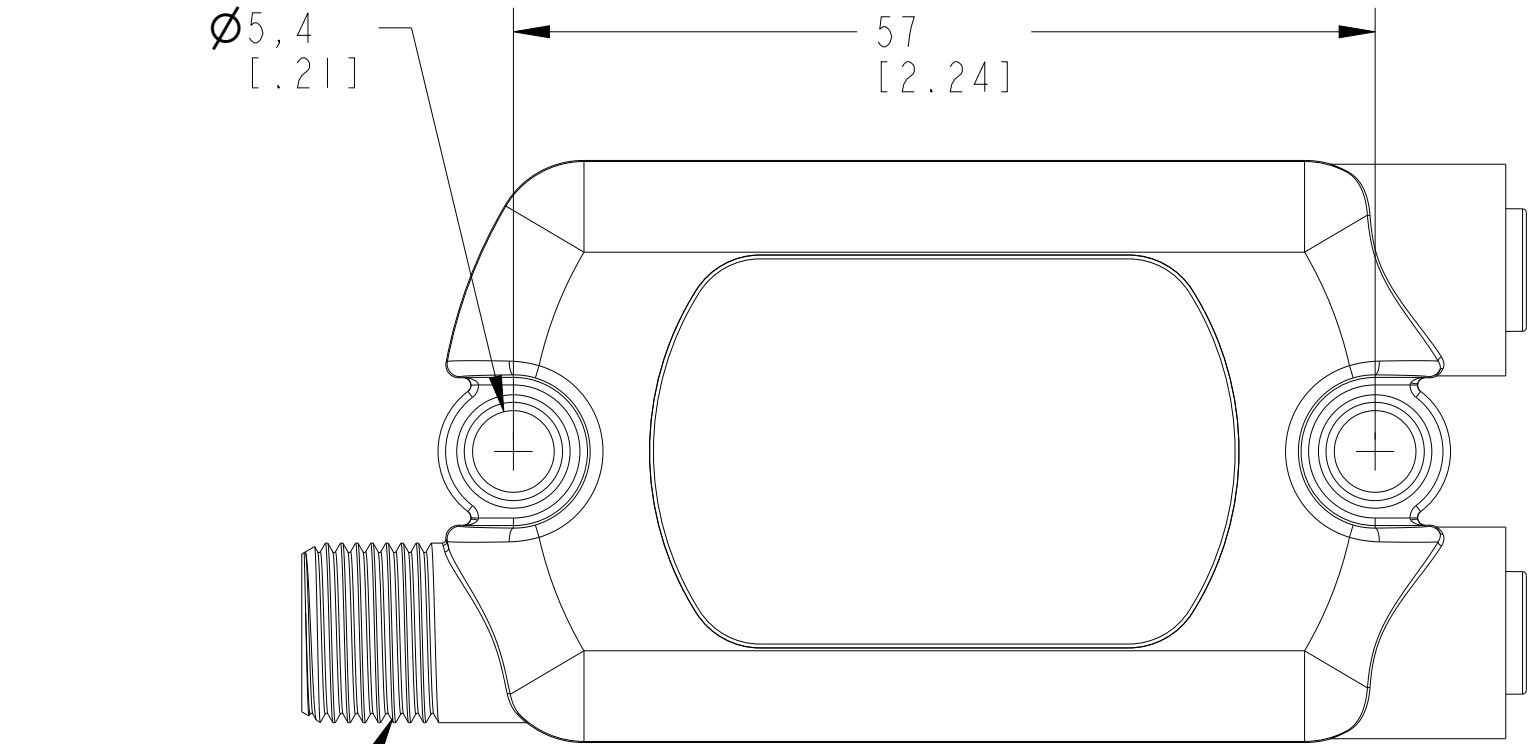
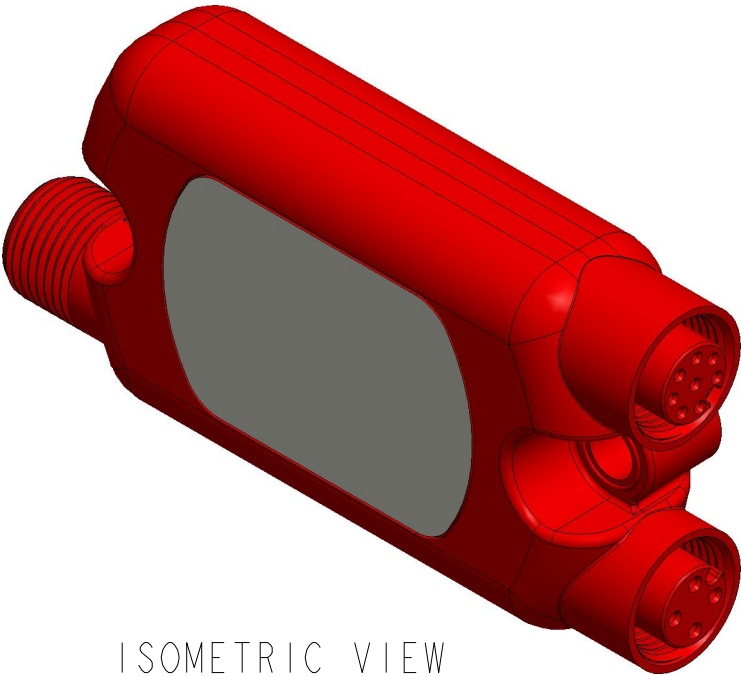
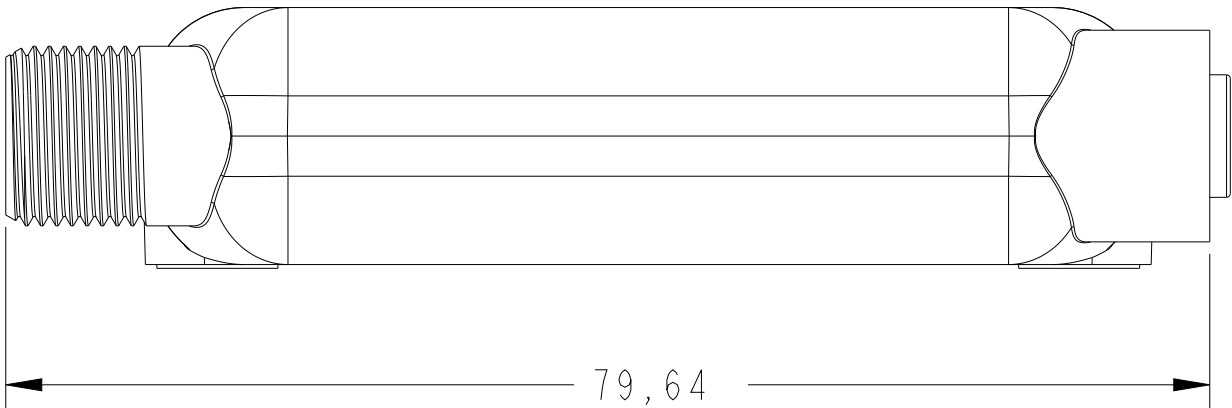


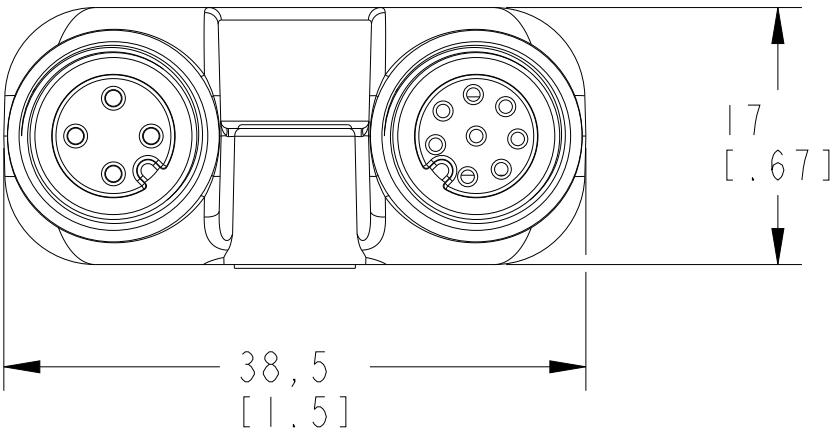
CRITICAL TO QUALITY CLASSIFICATION TABLE					
P=PERFORMANCE, F=FIT, A=ASSEMBLY X=IDENTIFIES APPLICABLE CLASSIFICATION(S) ◇=ENGINEERING AND/OR MANUFACTURING REQUIREMENT Ⓜ=REGULATORY REQUIREMENT-CONFORMANCE IS MANDATORY					
COMMENTS	DRAWING ZONE	P	F	A	R
ROHS	G1-H1				X



SCALE 2.000




ISOMETRIC VIEW



MUST COMPLY WITH ROCKWELL
AUTOMATION ENVIRONMENTAL
SPECIFICATION 970-20-01

NOTES:
1. APPROXIMATE DIMENSIONS ARE SHOWN IN
MILLIMETERS [INCHES]. DIMENSIONS ARE NOT
INTENDED TO BE USED FOR MANUFACTURING PURPOSES.

	CONFIDENTIAL AND PROPRIETARY INFORMATION. THIS DOCUMENT CONTAINS CONFIDENTIAL AND PROPRIETARY INFORMATION OF ROCKWELL AUTOMATION, INC. AND MAY NOT BE USED, COPIED OR DISCLOSED TO OTHERS, EXCEPT WITH THE AUTHORIZED WRITTEN PERMISSION OF ROCKWELL AUTOMATION, INC.			
	DATE: 2024-04-16		SHEET 1 OF 1	
	SIZE	DIR	VER	
DESCRIPTION 440S-SF8D/440S-MF8D/440S-SLF8D/440S-MLF8 8-PIN GURDLINK ENABLED TAP CUSTOMER REFERENCE		B	10007915160	01
CREATED BY: SN5		CHANGED BY: -		