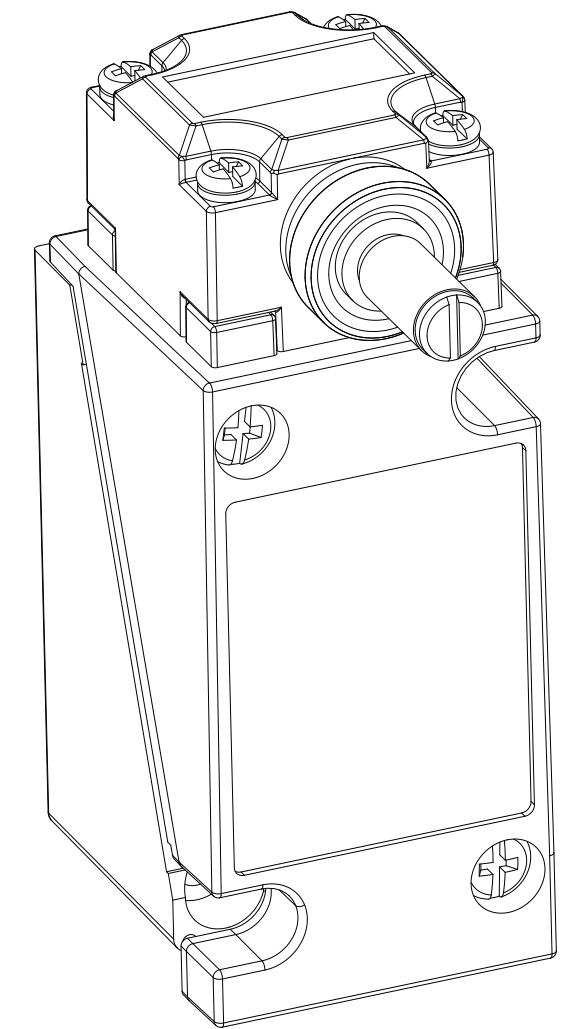
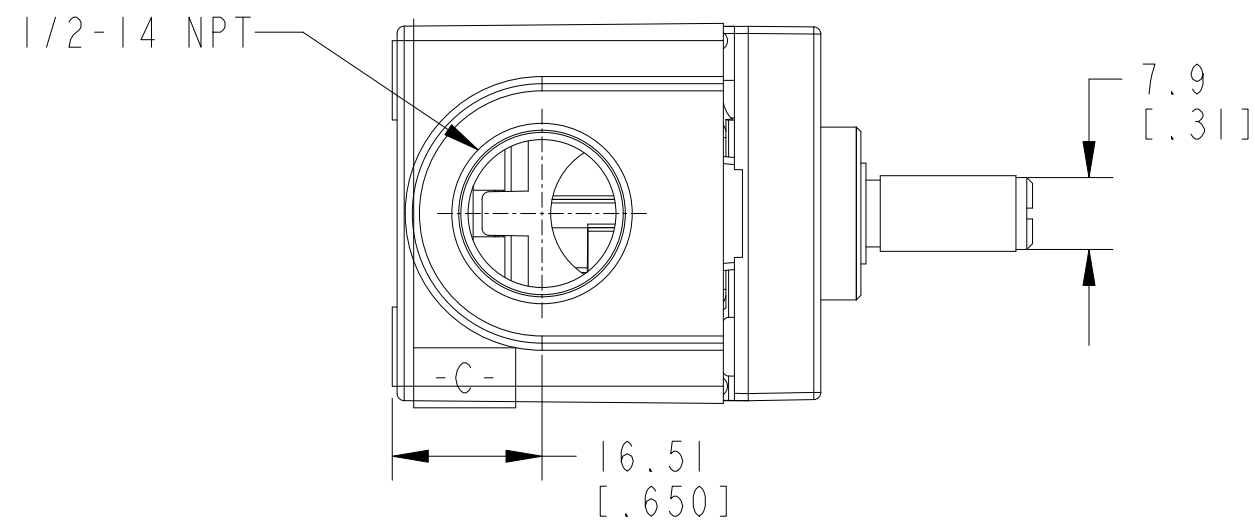
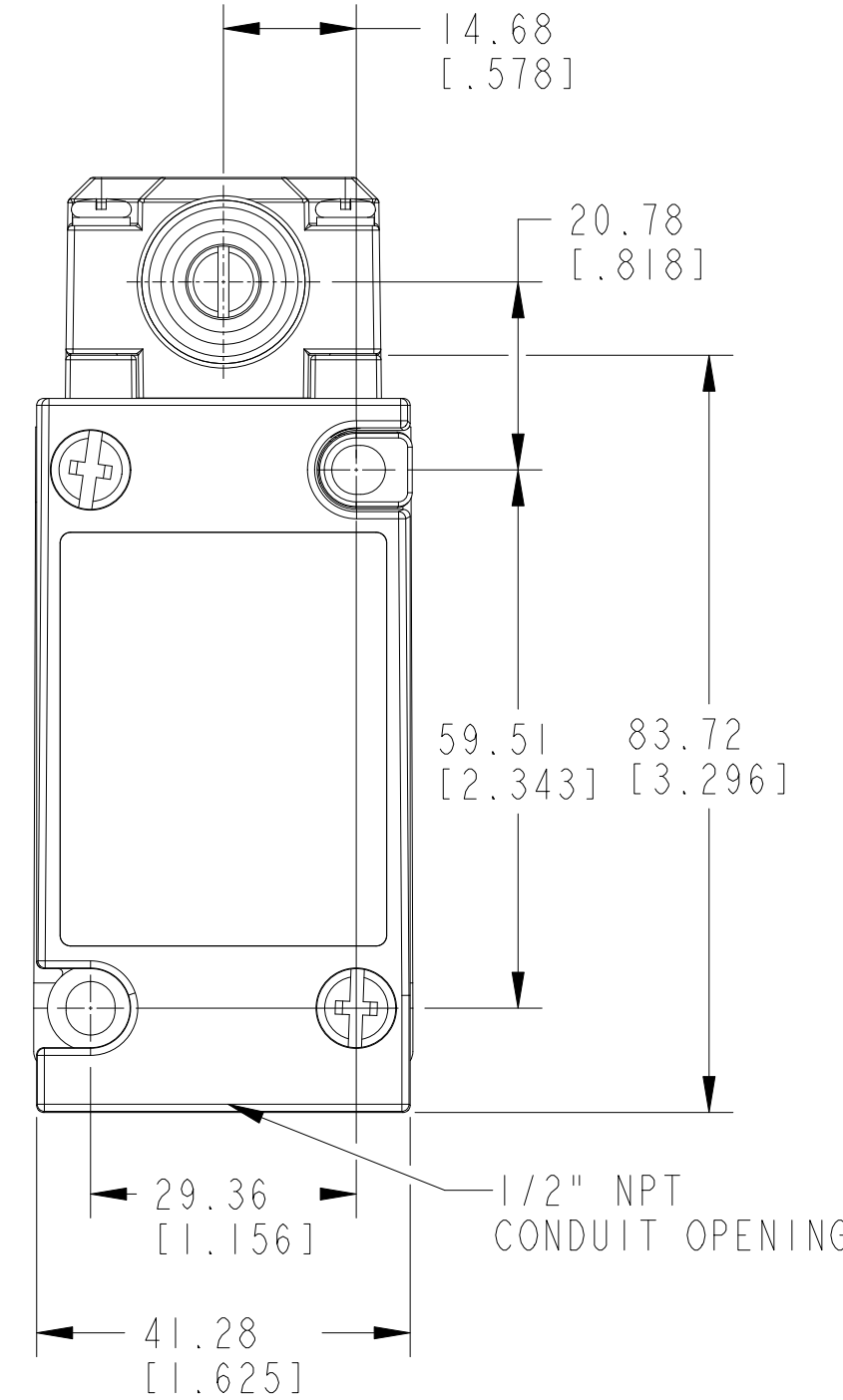
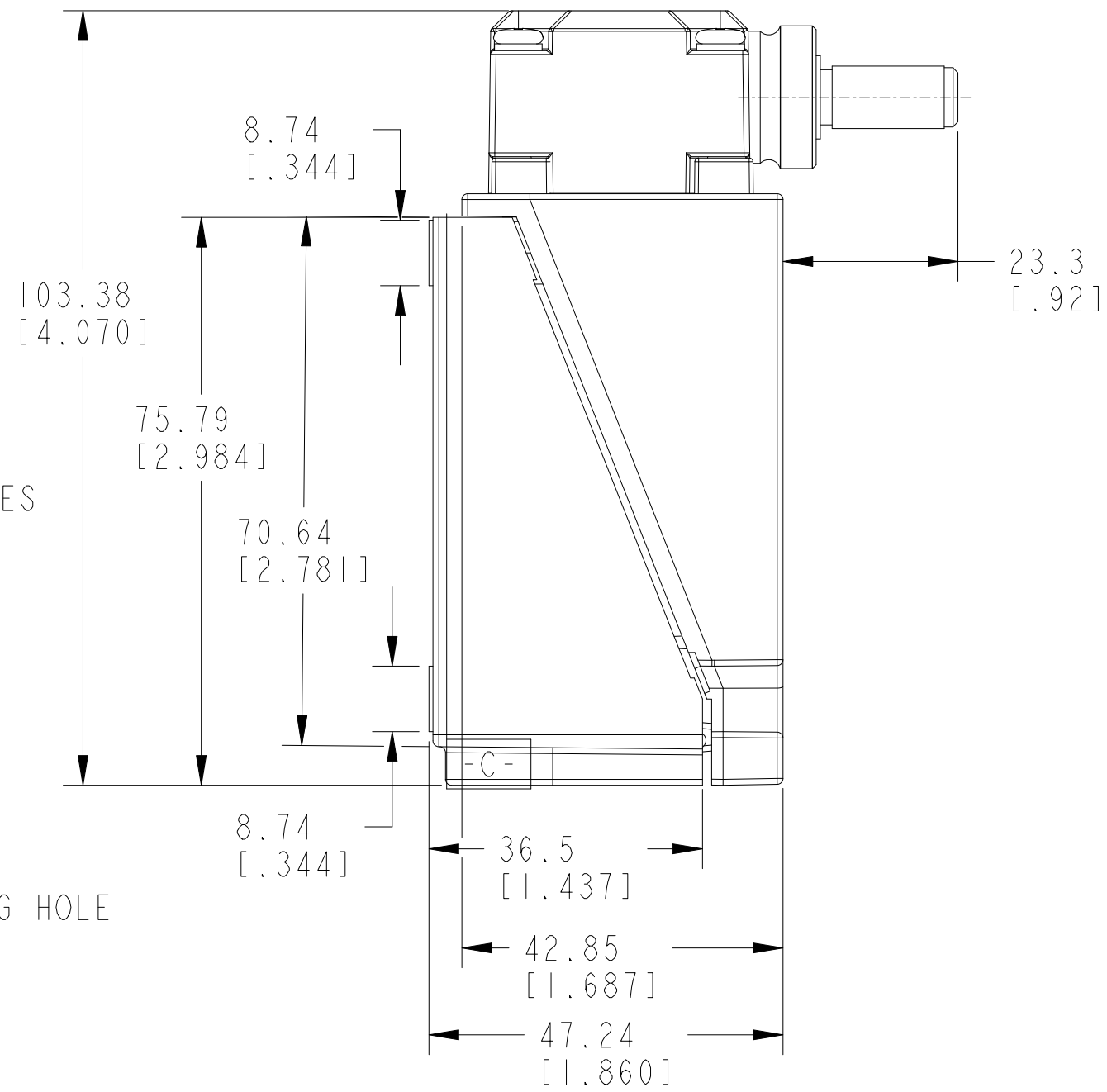
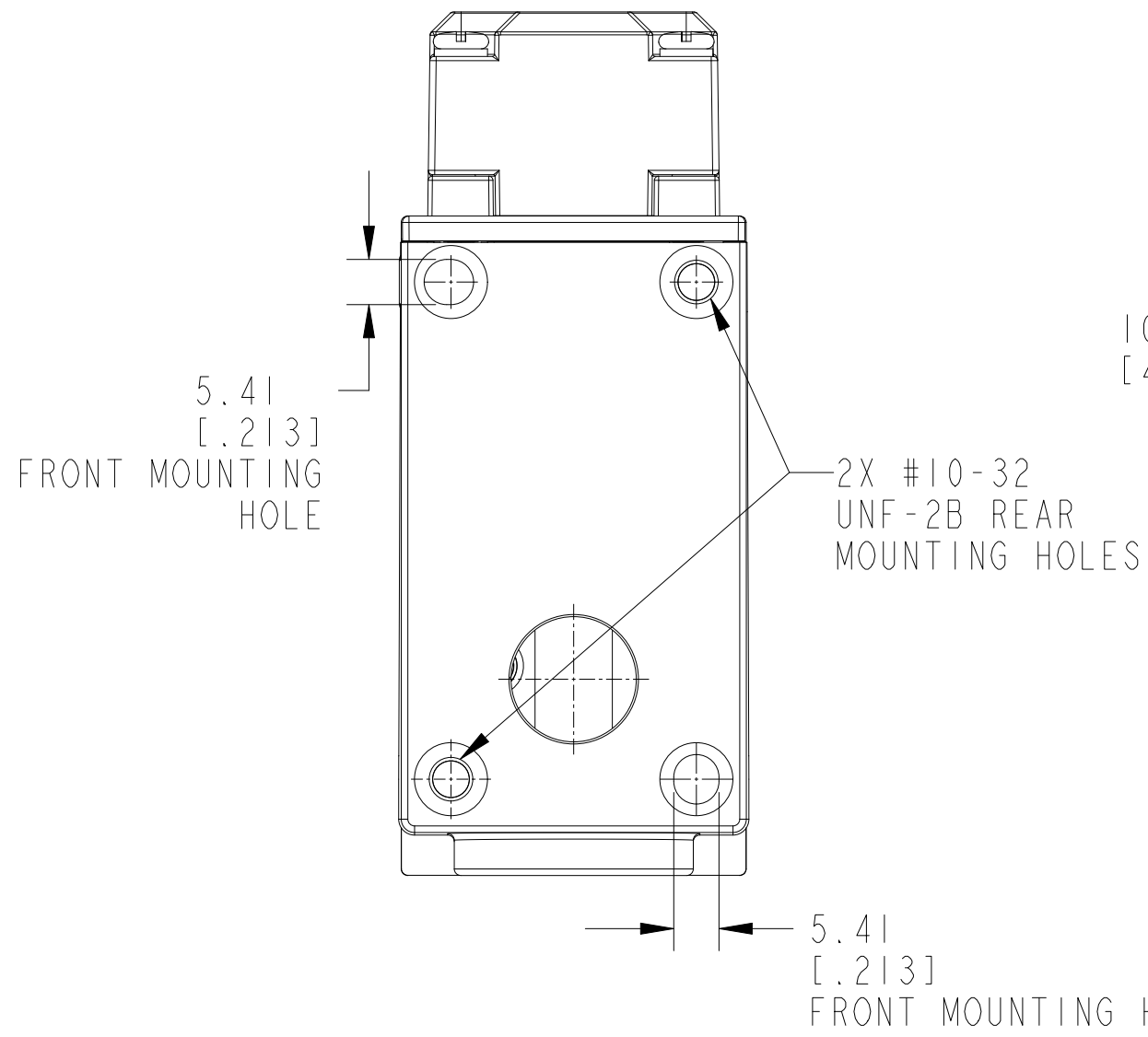
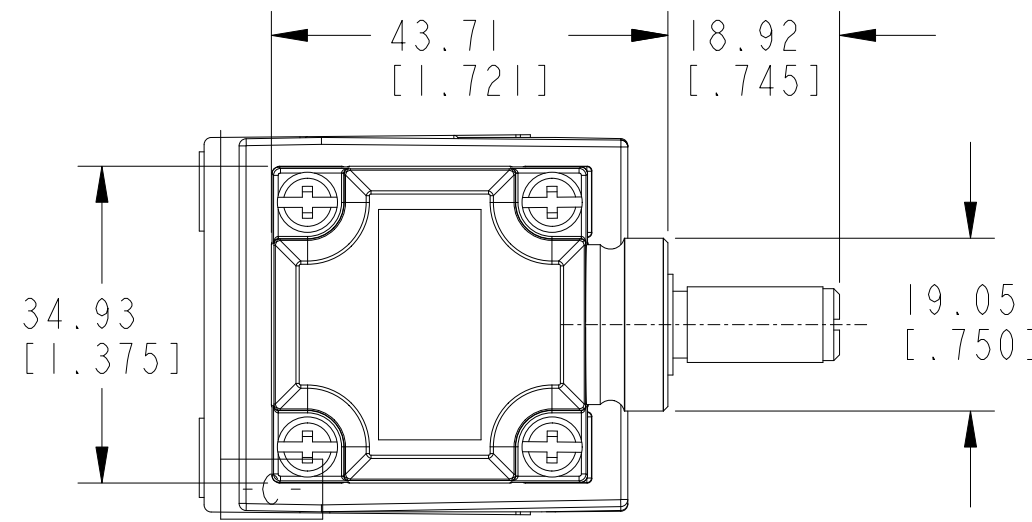


**CRITICAL TO QUALITY CLASSIFICATION TABLE**

P=PERFORMANCE, F=FIT, A=ASSEMBLY  
 X=IDENTIFIES APPLICABLE CLASSIFICATION(S)  
 Ⓢ=ENGINEERING AND/OR MANUFACTURING REQUIREMENT  
 Ⓜ=REGULATORY REQUIREMENT-CONFORMANCE IS MANDATORY

COMMENTS	DRAWING ZONE	P	F	A	R
ROHS	G-1				X



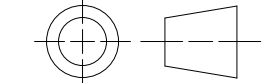
ISOMETRIC VIEW

MUST COMPLY WITH ROCKWELL AUTOMATION ENVIRONMENTAL SPECIFICATION 970-20-01

NOTE:  
 1. APPROXIMATE DIMENSIONS ARE SHOWN IN MILLIMETERS [INCHES].  
 DIMENSIONS ARE NOT INTENDED TO BE USED FOR MANUFACTURING PURPOSES.

ALL UNDIMENSIONED GEOMETRIES ARE CONTROLLED BY THE CAD MODEL. IN CASE OF DIMENSION DISCREPANCY, CAD MODEL OVERRIDES.

THIRD ANGLE PROJECTION



**802T-AP**  
 METAL PLUG-IN OILTIGHT LIMIT SWITCH  
 CUSTOMER DRAWING  
 CREATED BY: AKHAN24      CHANGED BY: -

CONFIDENTIAL AND PROPRIETARY INFORMATION. THIS DOCUMENT CONTAINS CONFIDENTIAL AND PROPRIETARY INFORMATION OF ROCKWELL AUTOMATION, INC. AND MAY NOT BE USED, COPIED OR DISCLOSED TO OTHERS, EXCEPT WITH THE AUTHORIZED WRITTEN PERMISSION OF ROCKWELL AUTOMATION, INC.  
 DATE: 2024-07-05      SHEET 1 OF 1

SIZE	DIR	VER
C	10008041476	00