

1 2 3 4 5 6 7 8

A B C D E F G H

CAN BE DRILLED OUT FOR 5/15 DIA. PADLOCK TO LOCK IN "ON" POSITION

1.10 [27.94]

1.06 [26.92]

1/4-20 UNC THD 2 STUDS

2.63 [66.80]

.88 [22.23]

1.84 [46.84]

5.78 [146.81]

4.69 [119.08]

153°

5.56 [141.30]

ACCEPTS (3) Ø5/16 PADLOCKS IN "OFF" POSITION

TO MAKE SLOT DRILL (3) Ø1/2" [12.7] HOLES AND REMOVE BURRS

Ø.27 [6.73] 2 HOLES

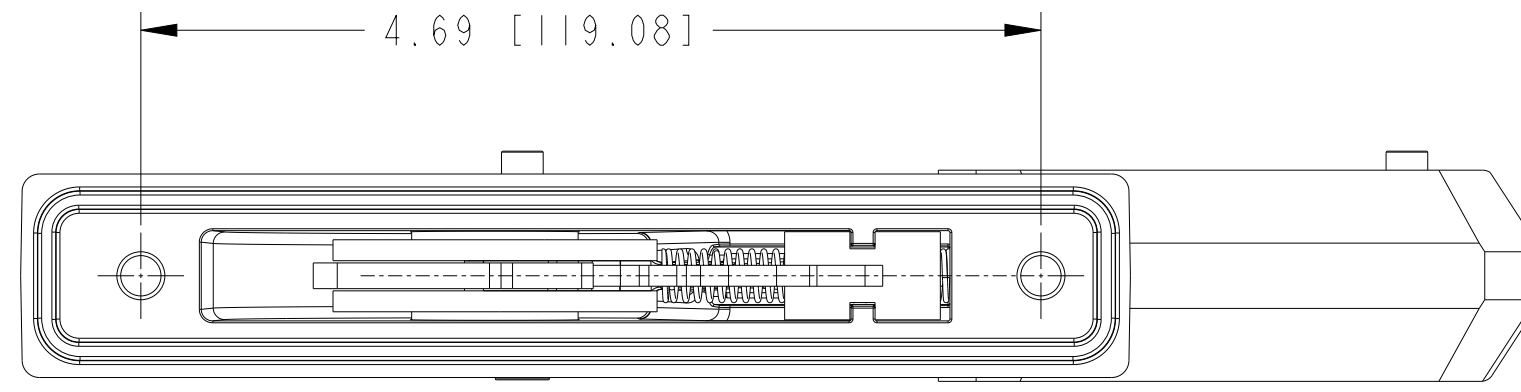
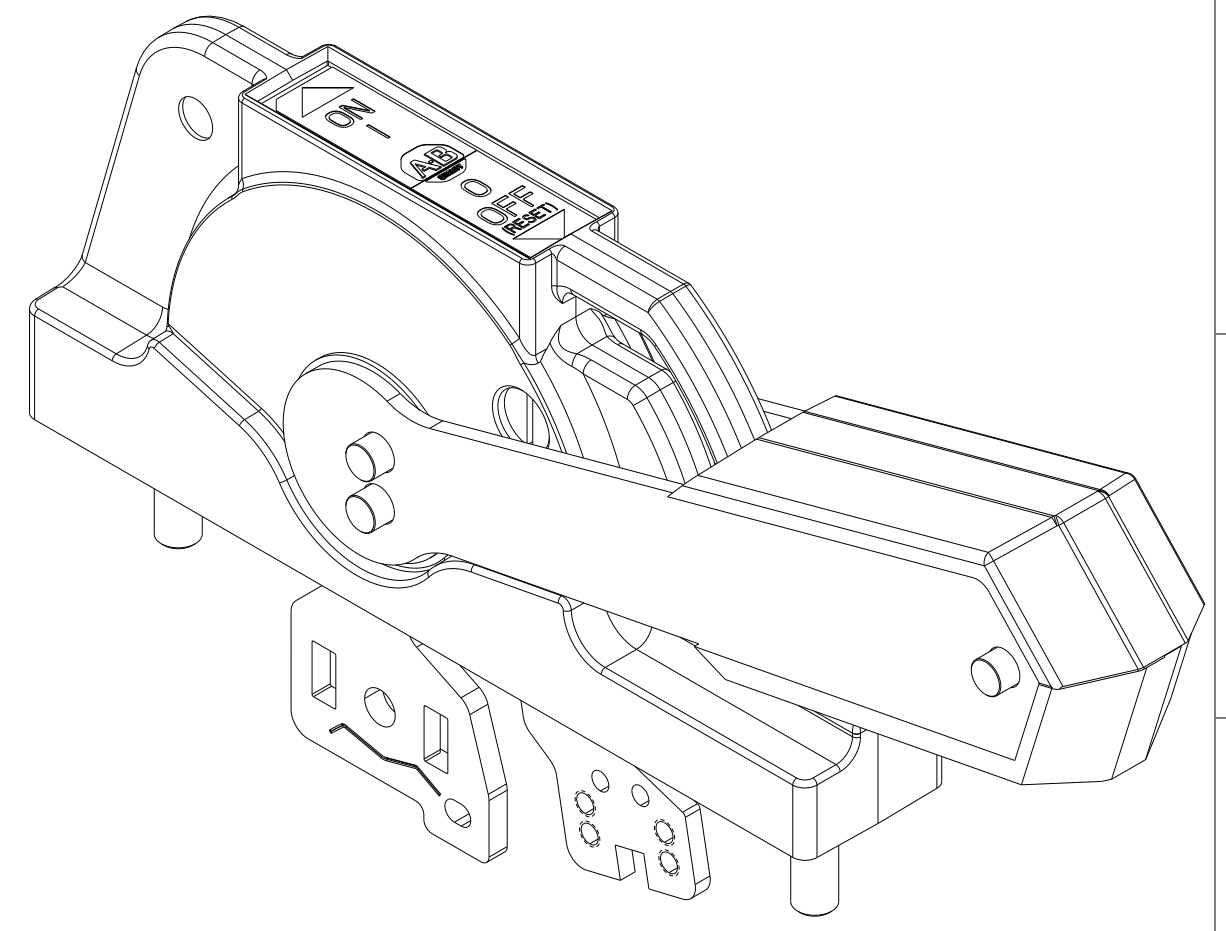
1.00 [25.40]

.88 [22.23]

1.00 [25.40]

4.69 [119.06]

ENCLOSURE FLANGE CUTOUT

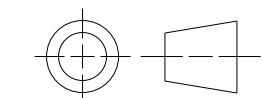


- NOTES:
 1. DIMENSIONS SHOWN ARE FOR REFERENCE ONLY. NOT INTENDED FOR MANUFACTURING PURPOSES.
 2. DIMENSIONS IN BRACKETS ARE IN MILLIMETERS.

MUST COMPLY WITH ROCKWELL AUTOMATION ENVIRONMENTAL SPECIFICATION 970-20-01

ALL UNDIMENSIONED GEOMETRIES ARE CONTROLLED BY THE CAD MODEL. IN CASE OF DIMENSION DISCREPANCY, CAD MODEL OVERRIDES.

THIRD ANGLE PROJECTION



CUSTOMER OUTLINE DRAWING
 HANDLE FOR USE WITH 1494U, 140G SWITCHES, WITH STUDS
 1494U-HP1, 1494U-HM1, 1494U-HS1, 140G-P1, 140G-M1, 140G-S1

CREATED BY: LEQUENTIN

CHANGED BY: *****

10008084107 CAD MODEL

CONFIDENTIAL AND PROPRIETARY INFORMATION. THIS DOCUMENT CONTAINS CONFIDENTIAL AND PROPRIETARY INFORMATION OF ROCKWELL AUTOMATION, INC. AND MAY NOT BE USED, COPIED OR DISCLOSED TO OTHERS, EXCEPT WITH THE AUTHORIZED WRITTEN PERMISSION OF ROCKWELL AUTOMATION, INC.
 DATE: 2024-08-06 SHEET 1 OF 1

SIZE	DIR	VER
C	10008084108	00

1 2 3 4 5 6 7 8