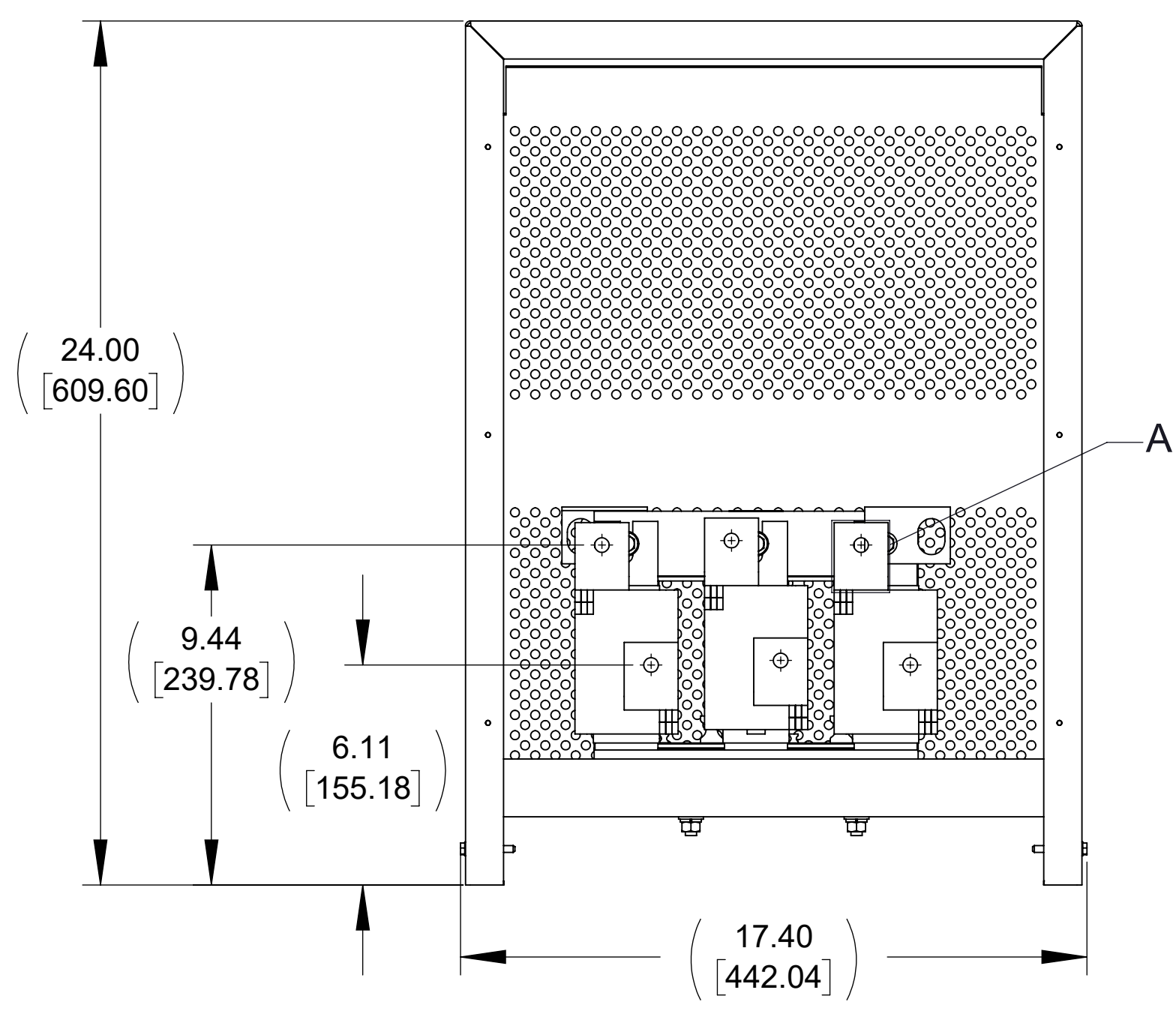


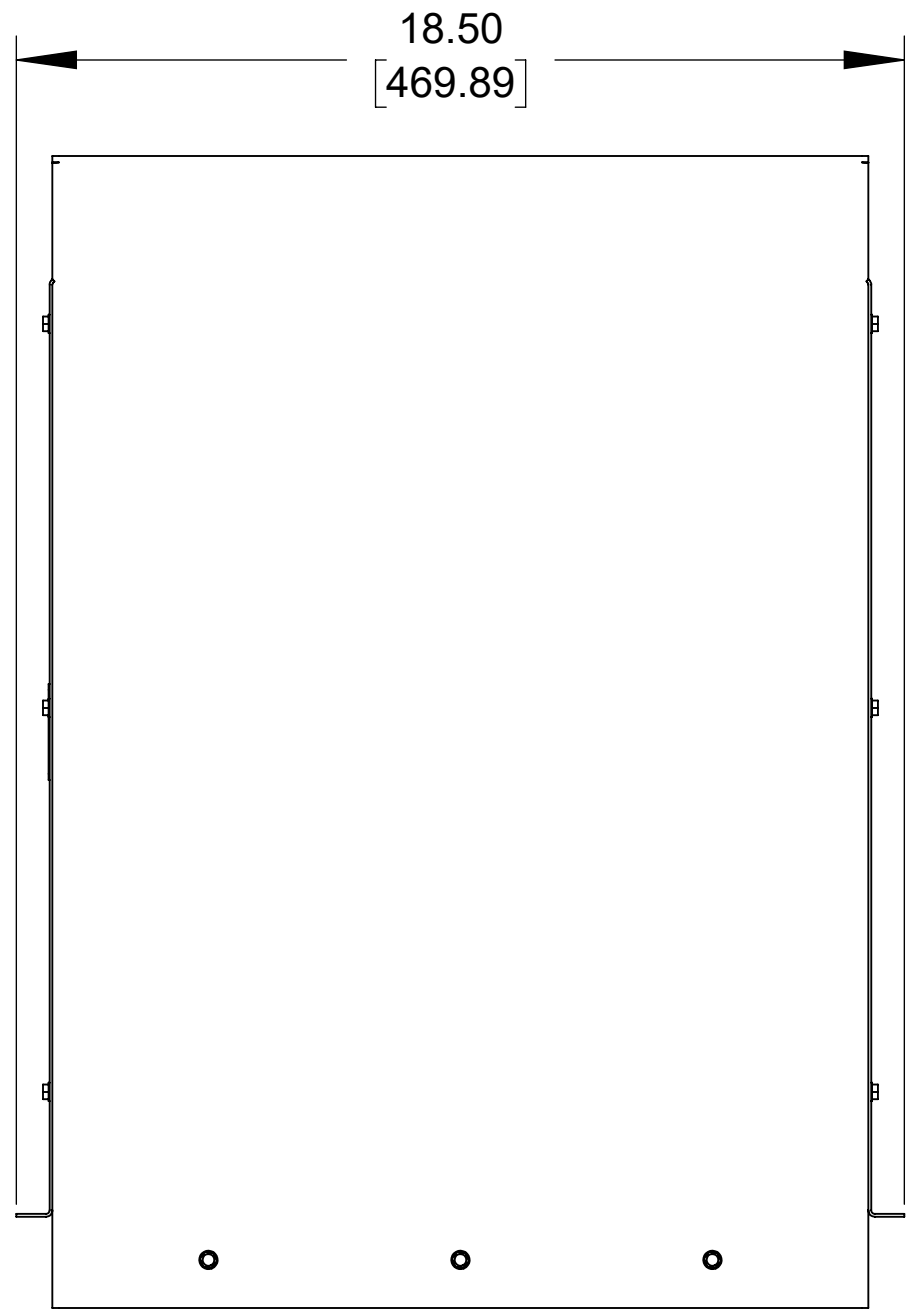
APPROX. WEIGHT (LBS)
132

ECO No	DESCRIPTION	REV BY	DATE

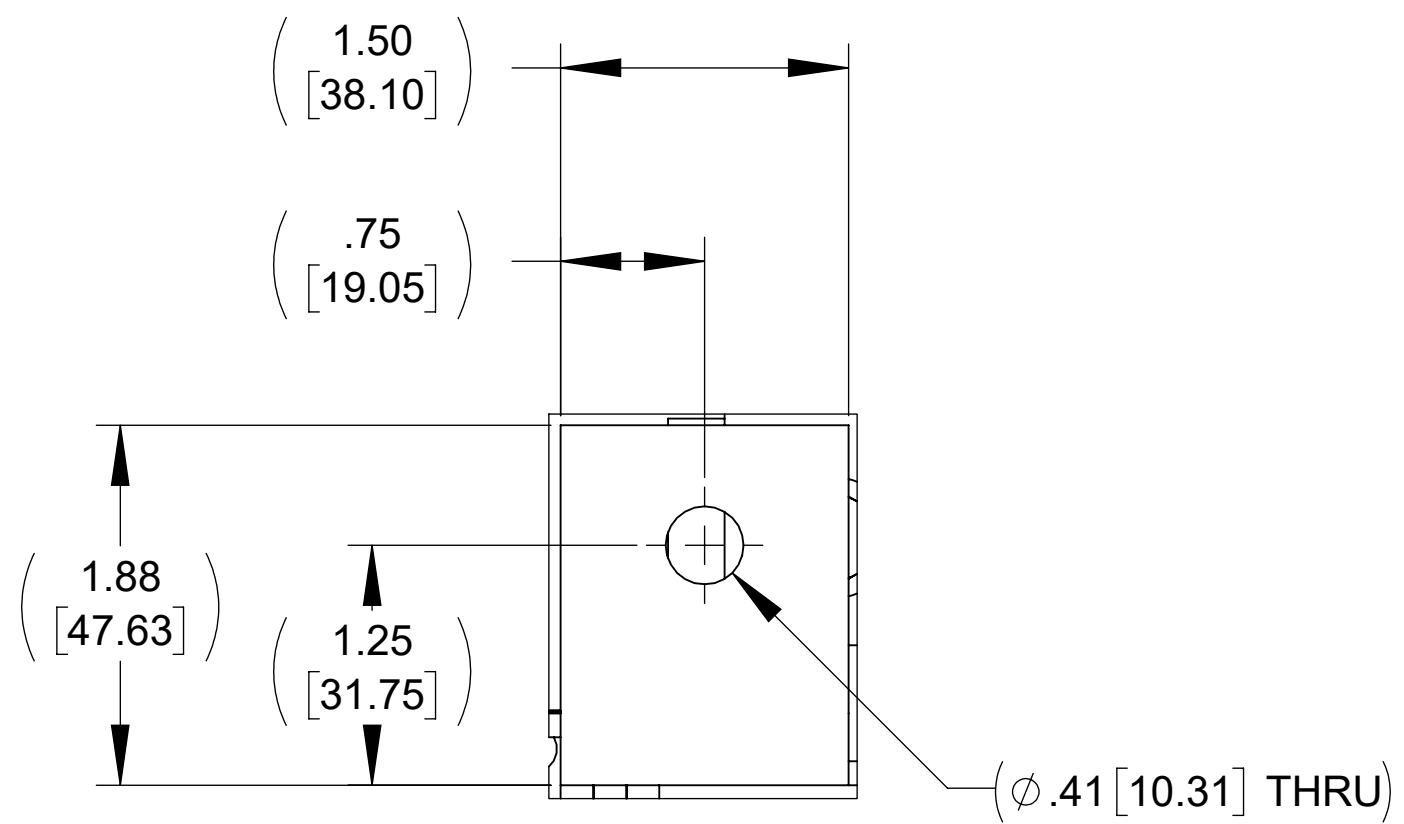
CRITICAL TO QUALITY CLASSIFICATION TABLE				
P-PROFORMANCE FIT ASSEMBLY E-ENGINEERING APPLICABLE CLASSIFICATIONS S-SCHEMATIC AND/OR MANUFACTURING REQUIREMENT R-REGULATORY REQUIREMENT/COMPLIANCE MANDATORY				
COMMENTS	DRAWING ZONE	Ⓟ	Ⓡ	Ⓢ
ROHS	G1-H1			X



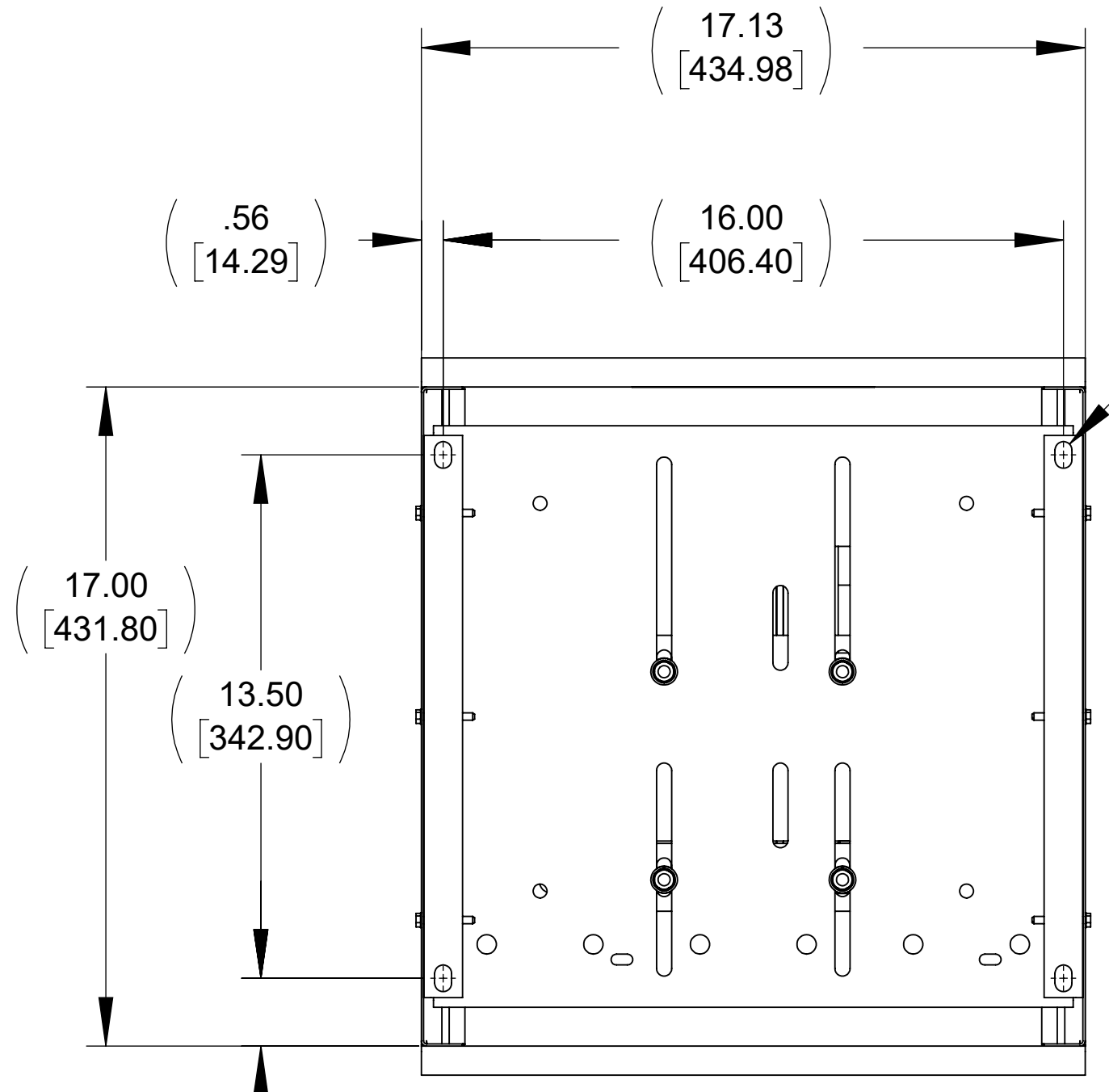
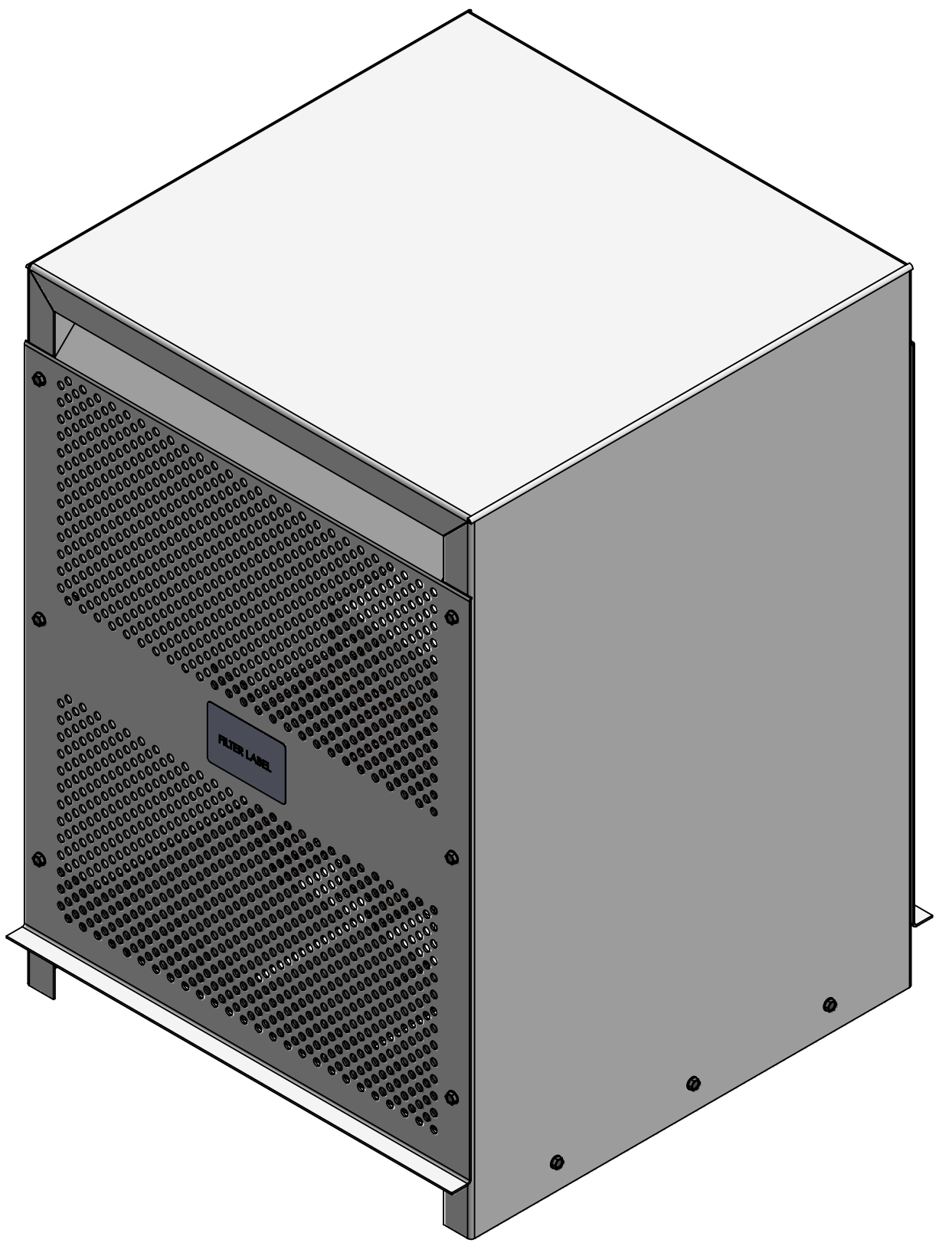
FRONT VIEW (PANEL REMOVED)



SIDE VIEW

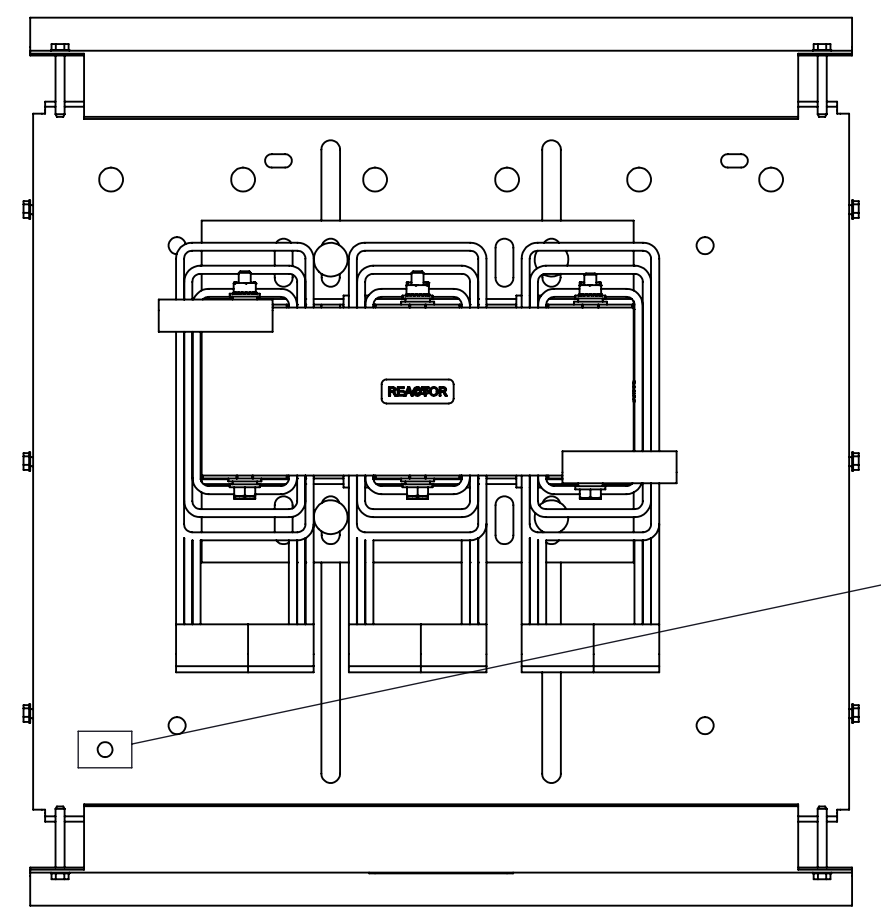


DETAIL A (6 PLACES)

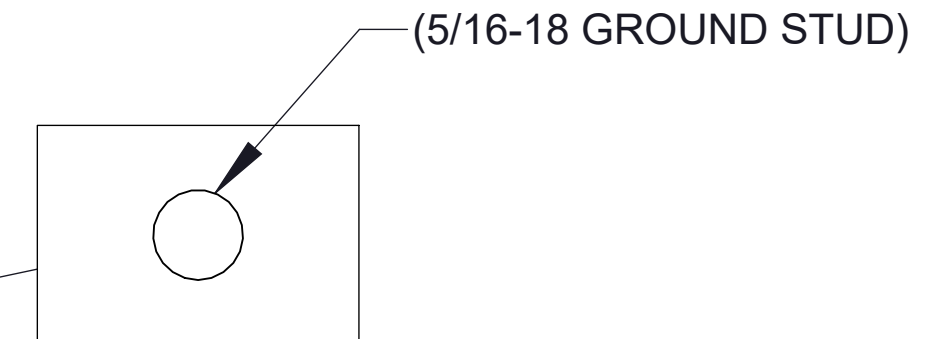


BOTTOM VIEW

(.44 [11.18] X .69 [17.53]) SLOT, 4 PLACES



TOP VIEW (PANEL REMOVED)



NOTES:

1. REFER TO USER MANUAL FOR COMPLETE INSTALATION INSTRUCTION.

<p>THE COMPONENT, PART OR ASSEMBLY DESCRIBED IN THIS DOCUMENT MUST COMPLY WITH THE EU (EUROPEAN UNION) DIRECTIVE ROHS2</p> <p>CONTAINS <0.1% OF ANY SVHC BY WEIGHT PER REACH REGULATION</p>		<p>MATERIAL</p>		<p>CONFIDENTIAL AND PROPRIETARY INFORMATION THIS DOCUMENT CONTAINS CONFIDENTIAL AND PROPRIETARY INFORMATION OF MTE CORPORATION AND MAY NOT BE USED, COPIED OR DISCLOSED TO OTHERS EXCEPT WITH THE AUTHORIZED WRITTEN PERMISSION OF MTE CORPORATION</p>	
<p>UNLESS OTHERWISE SPECIFIED DIMENSIONS ARE IN INCHES [MM] TOLERANCES ARE:</p> <p>ANGLES: ± 1 °</p> <p>1 PLACE .X: ± .1 [2.5]</p> <p>2 PLACE .XX: ± .03 [0.76]</p> <p>3 PLACE .XXX: ± .010 [0.254]</p>		<p>Rockwell Automation</p>		<p>DESCRIPTION</p> <p>LINE/LOAD REACTOR w/ENCL SURE</p>	
<p>DRAWN WF</p> <p>CHECKED WF</p> <p>APPROVED PY</p>	<p>DATE 01/22/20</p> <p>DATE 01/23/20</p> <p>DATE 01/24/20</p>	<p>SIZE D</p> <p>SCALE 1:4</p>	<p>DWG No. CD 1321-3RA500-A</p>	<p>REV 00</p>	<p>SHEET 1 OF 1</p>