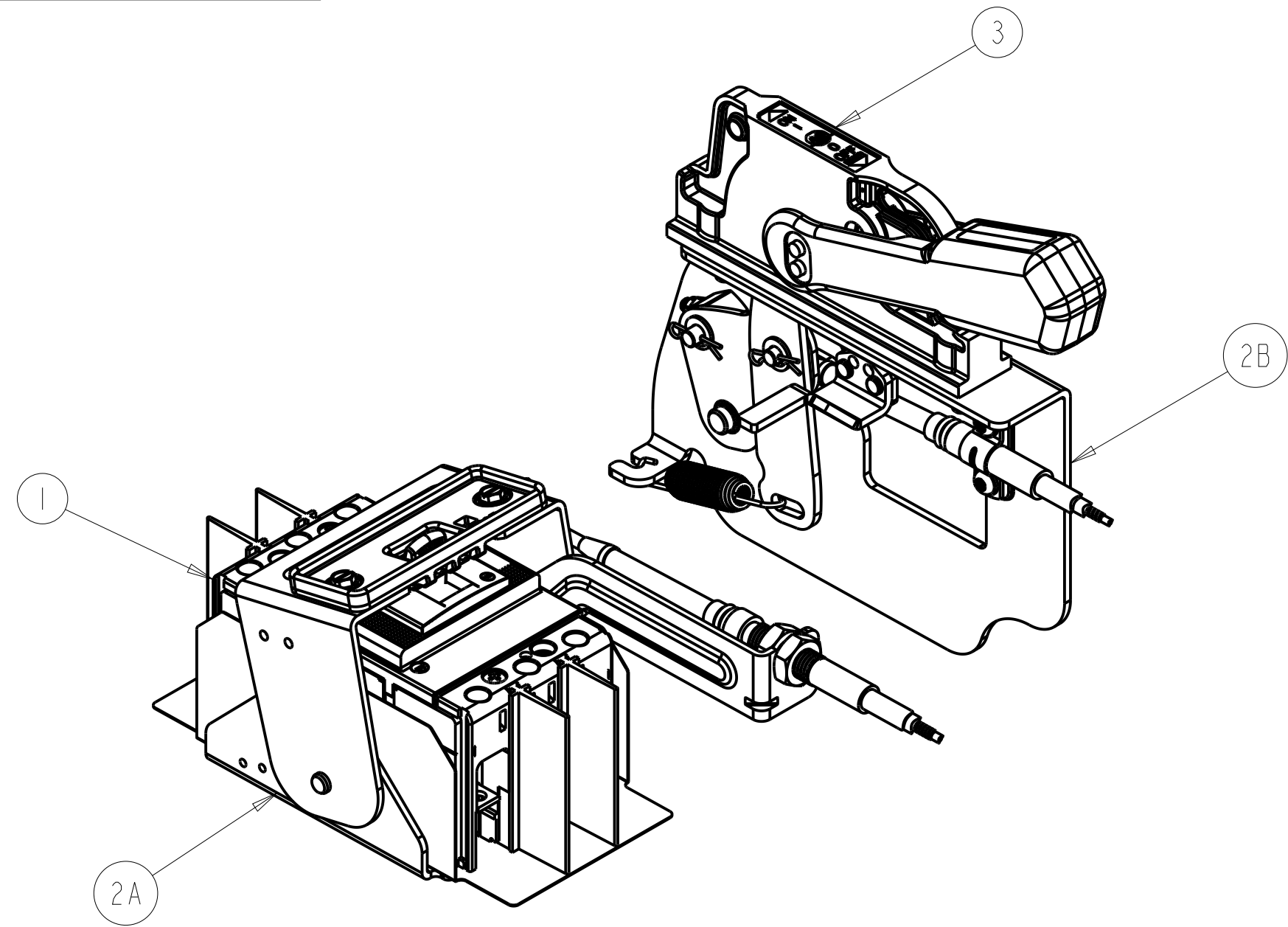


140G FLANGE CABLE COMPONENT IDENTIFICATION

ITEM	DESCRIPTION
1	MOLDED CASE CIRCUIT BREAKER
2A	FLANGE CABLE OPERATOR - BAIL
2B	FLANGE CABLE OPERATOR - BELLCRANK
3	FLANGE HANDLE



**Rockwell
Automation**

CONFIDENTIAL AND PROPRIETARY INFORMATION.
THIS DOCUMENT CONTAINS CONFIDENTIAL AND PROPRIETARY
INFORMATION OF ROCKWELL AUTOMATION, INC. AND MAY
NOT BE USED, COPIED OR DISCLOSED TO OTHERS, EXCEPT
WITH THE AUTHORIZED WRITTEN PERMISSION OF ROCKWELL
AUTOMATION, INC.

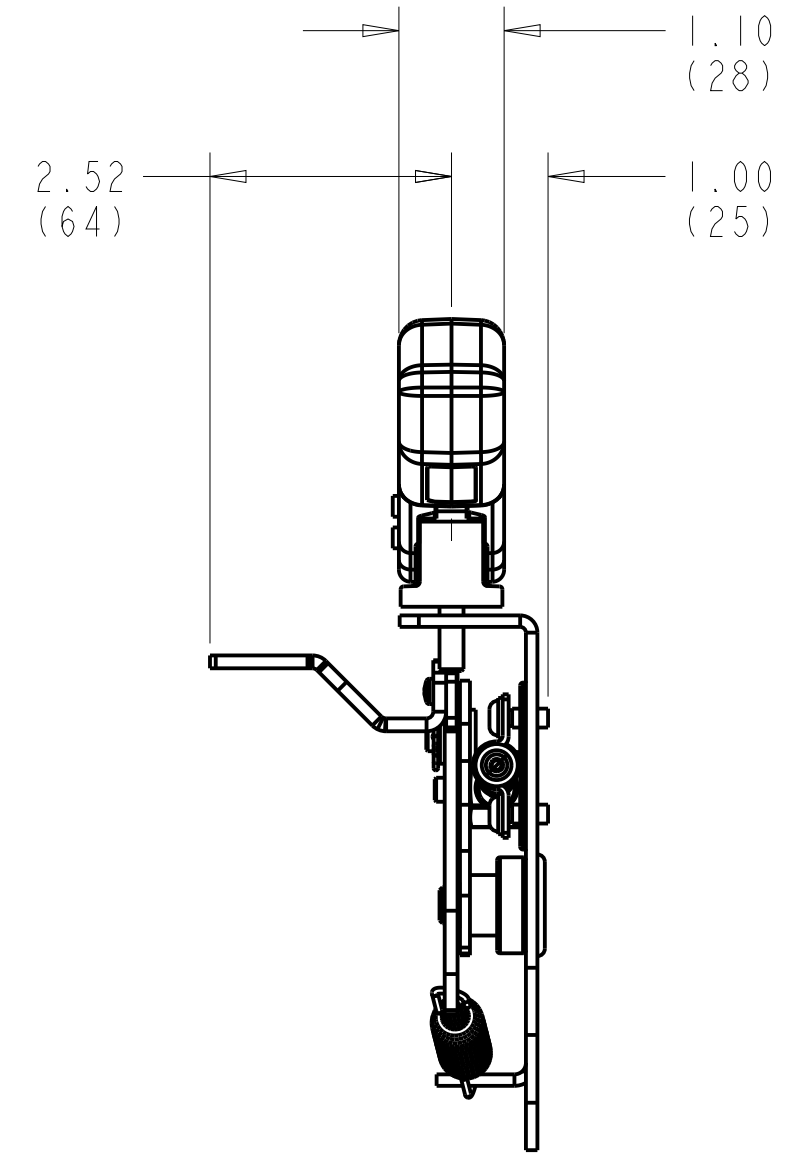
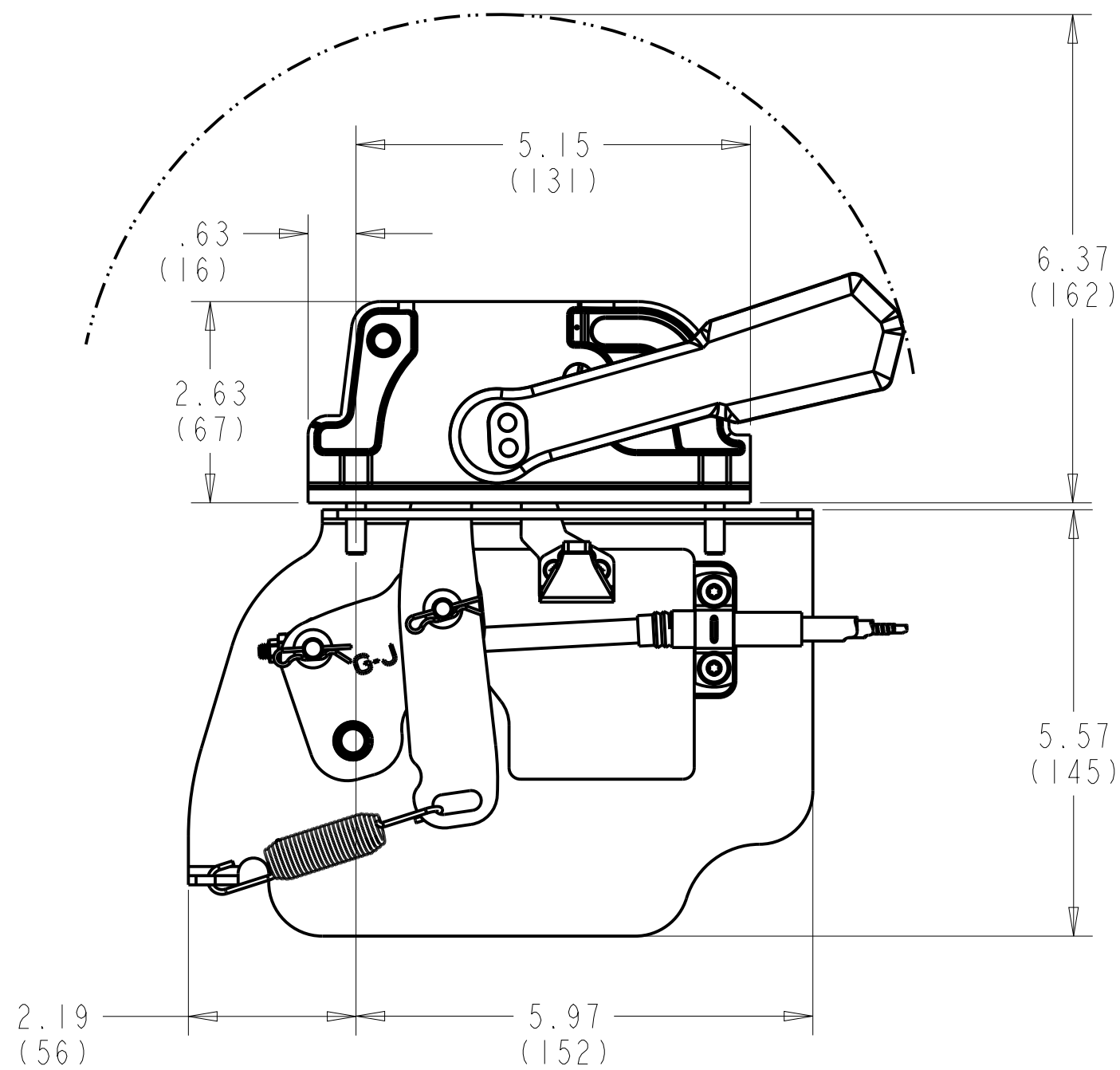
DESCRIPTION
**140G BAIL
FLANGE CABLE OPERATOR**

SHEET 1 OF 3
SIZE DIR VER
B **10004231995** **00**

DRAWN BY: SDCLORAN DATE: 22AU18

1 2 3 4 5 6 7 8

A
B
C
D
E
F
G
H



**Rockwell
Automation**

CONFIDENTIAL AND PROPRIETARY INFORMATION.
THIS DOCUMENT CONTAINS CONFIDENTIAL AND PROPRIETARY
INFORMATION OF ROCKWELL AUTOMATION, INC. AND MAY
NOT BE USED, COPIED OR DISCLOSED TO OTHERS, EXCEPT
WITH THE AUTHORIZED WRITTEN PERMISSION OF ROCKWELL
AUTOMATION, INC.

DESCRIPTION

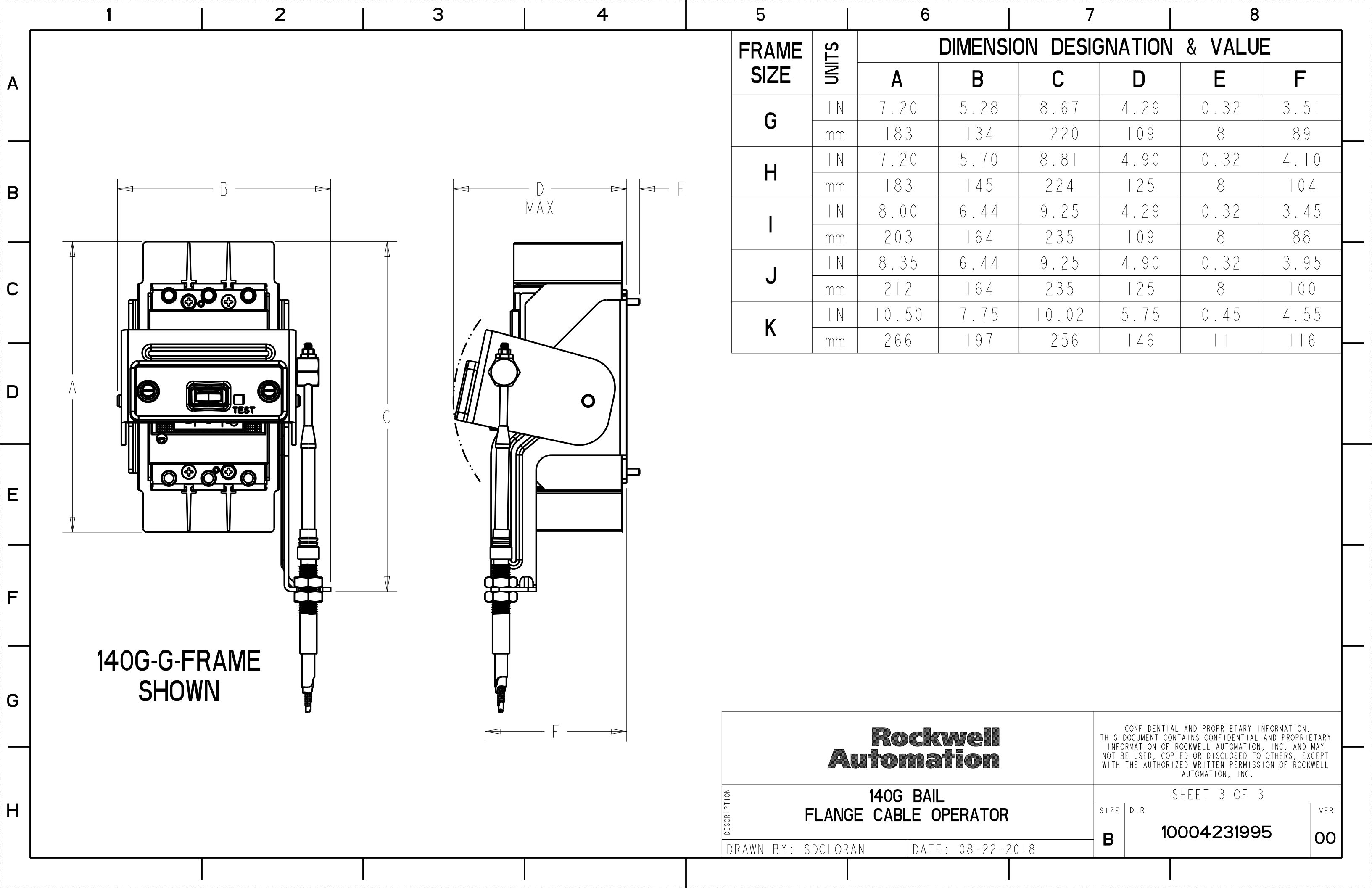
**140G BAIL
FLANGE CABLE OPERATOR**

SHEET 2 OF 3

SIZE	DIR	VER
B	10004231995	00

DRAWN BY: SDCLORAN

DATE: 08-22-2018



140G-G-FRAME
SHOWN

FRAME SIZE	UNITS	DIMENSION DESIGNATION & VALUE					
		A	B	C	D	E	F
G	IN	7.20	5.28	8.67	4.29	0.32	3.51
	mm	183	134	220	109	8	89
H	IN	7.20	5.70	8.81	4.90	0.32	4.10
	mm	183	145	224	125	8	104
I	IN	8.00	6.44	9.25	4.29	0.32	3.45
	mm	203	164	235	109	8	88
J	IN	8.35	6.44	9.25	4.90	0.32	3.95
	mm	212	164	235	125	8	100
K	IN	10.50	7.75	10.02	5.75	0.45	4.55
	mm	266	197	256	146	11	116

Rockwell Automation		<small>CONFIDENTIAL AND PROPRIETARY INFORMATION. THIS DOCUMENT CONTAINS CONFIDENTIAL AND PROPRIETARY INFORMATION OF ROCKWELL AUTOMATION, INC. AND MAY NOT BE USED, COPIED OR DISCLOSED TO OTHERS, EXCEPT WITH THE AUTHORIZED WRITTEN PERMISSION OF ROCKWELL AUTOMATION, INC.</small>	
140G BAIL FLANGE CABLE OPERATOR		SHEET 3 OF 3	
DRAWN BY: SDCLORAN	DATE: 08-22-2018	SIZE B	DIR 10004231995
		VER 00	