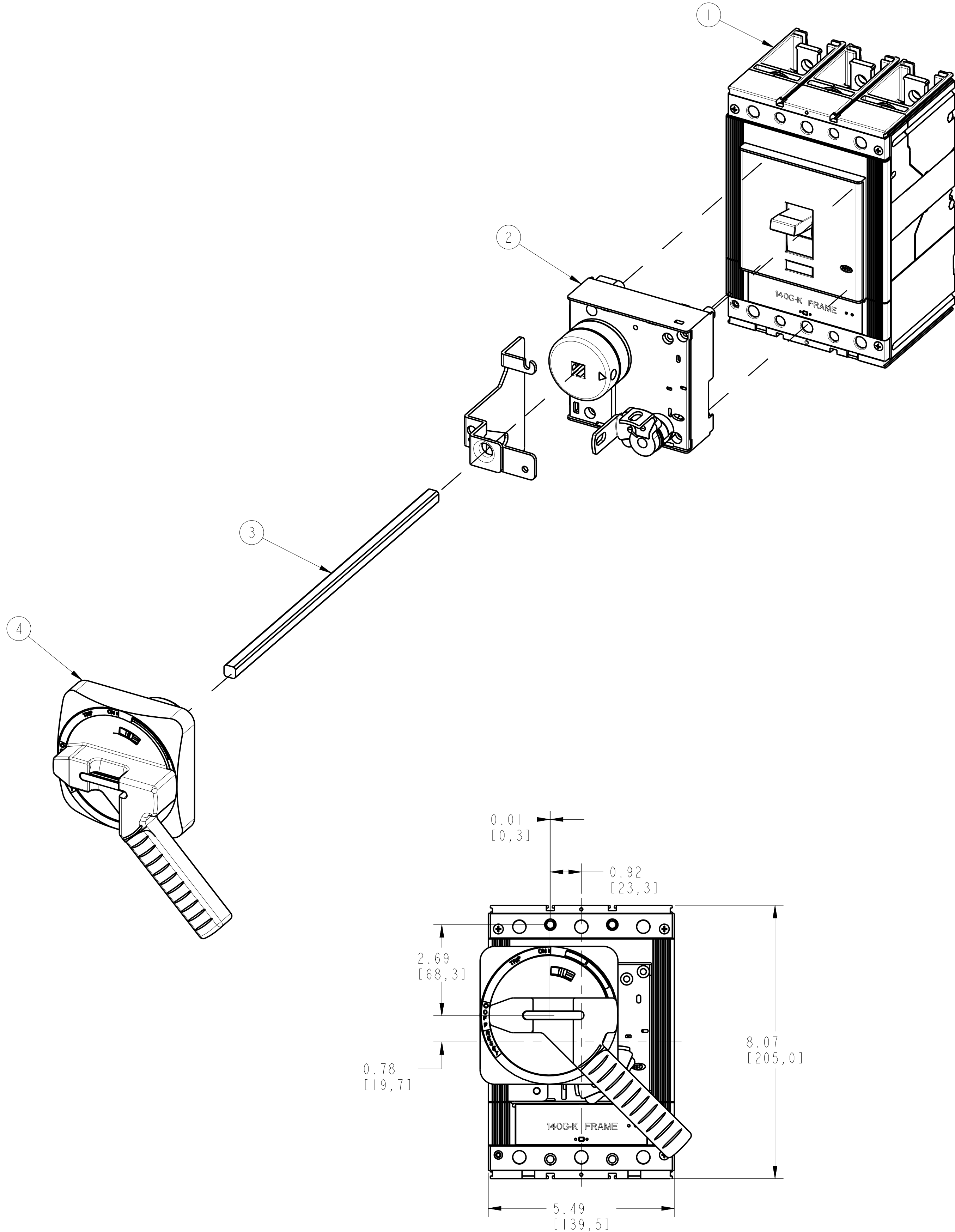
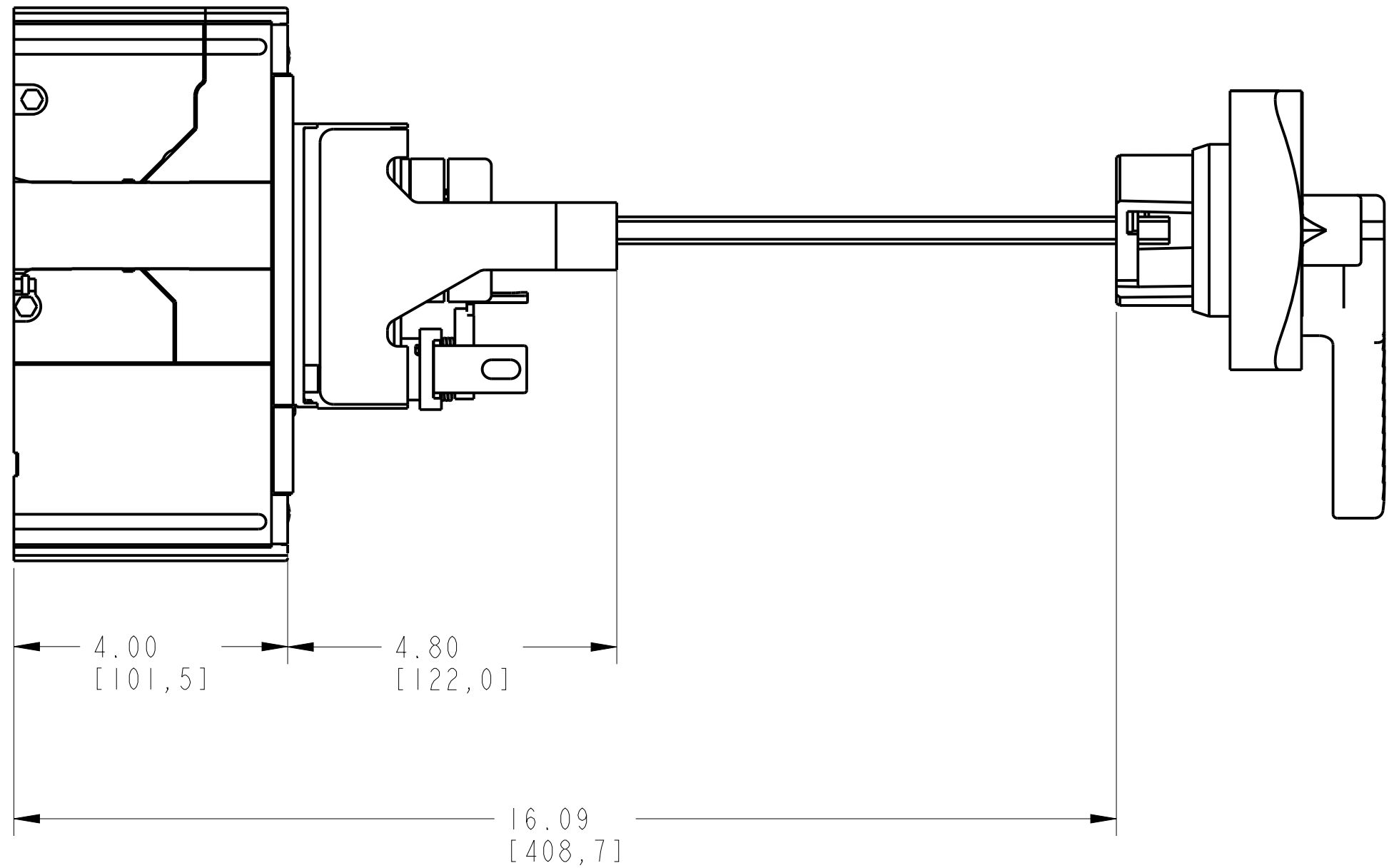
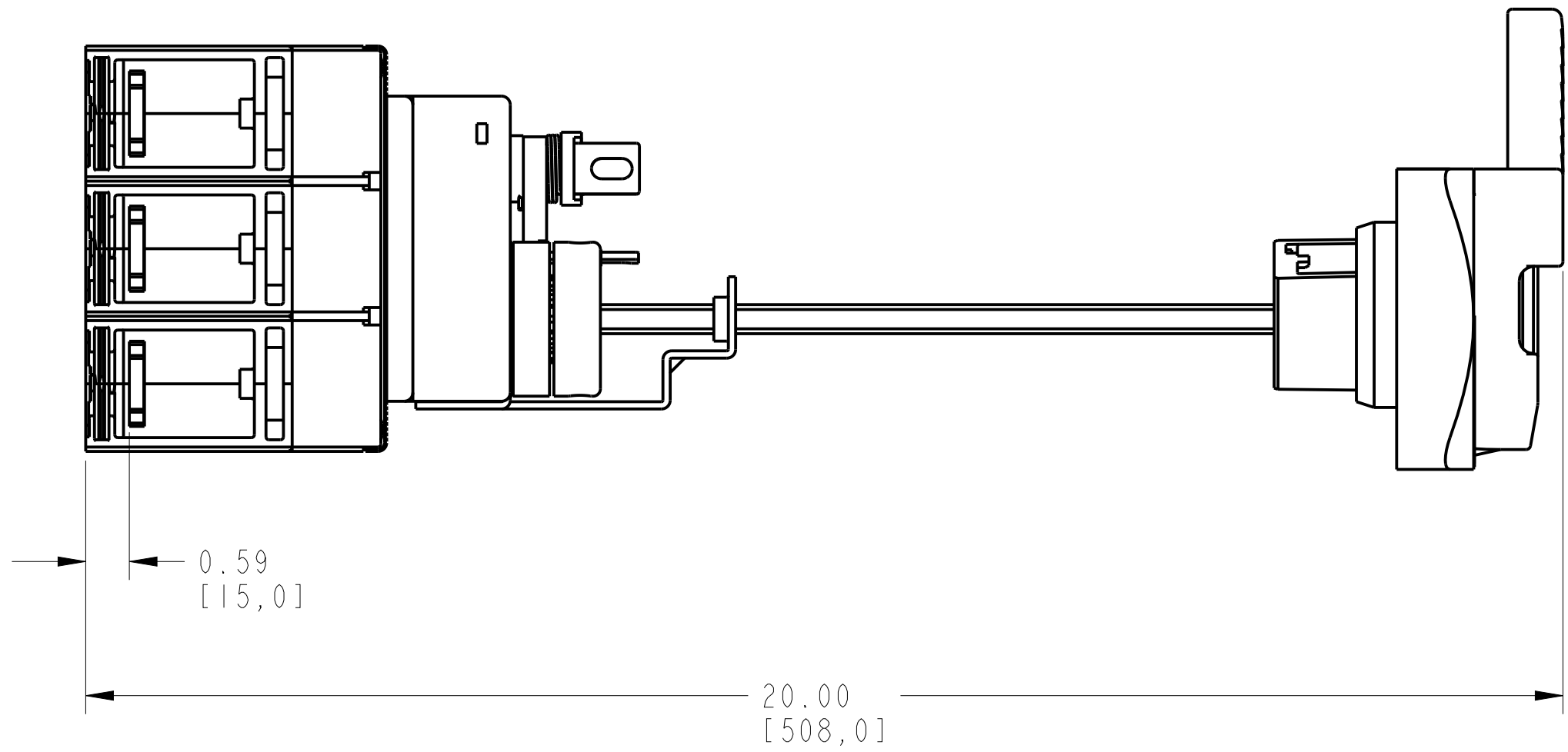
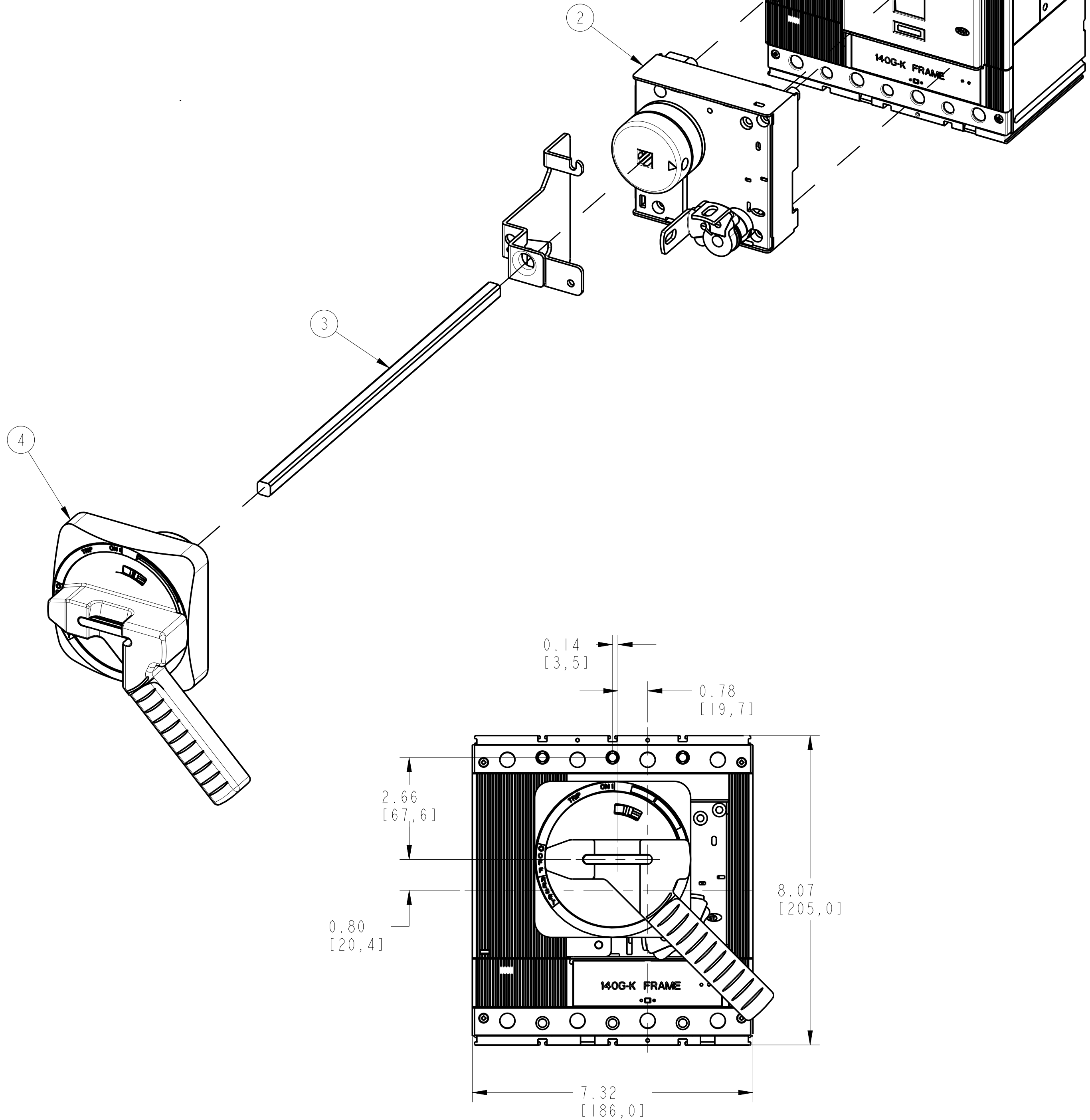
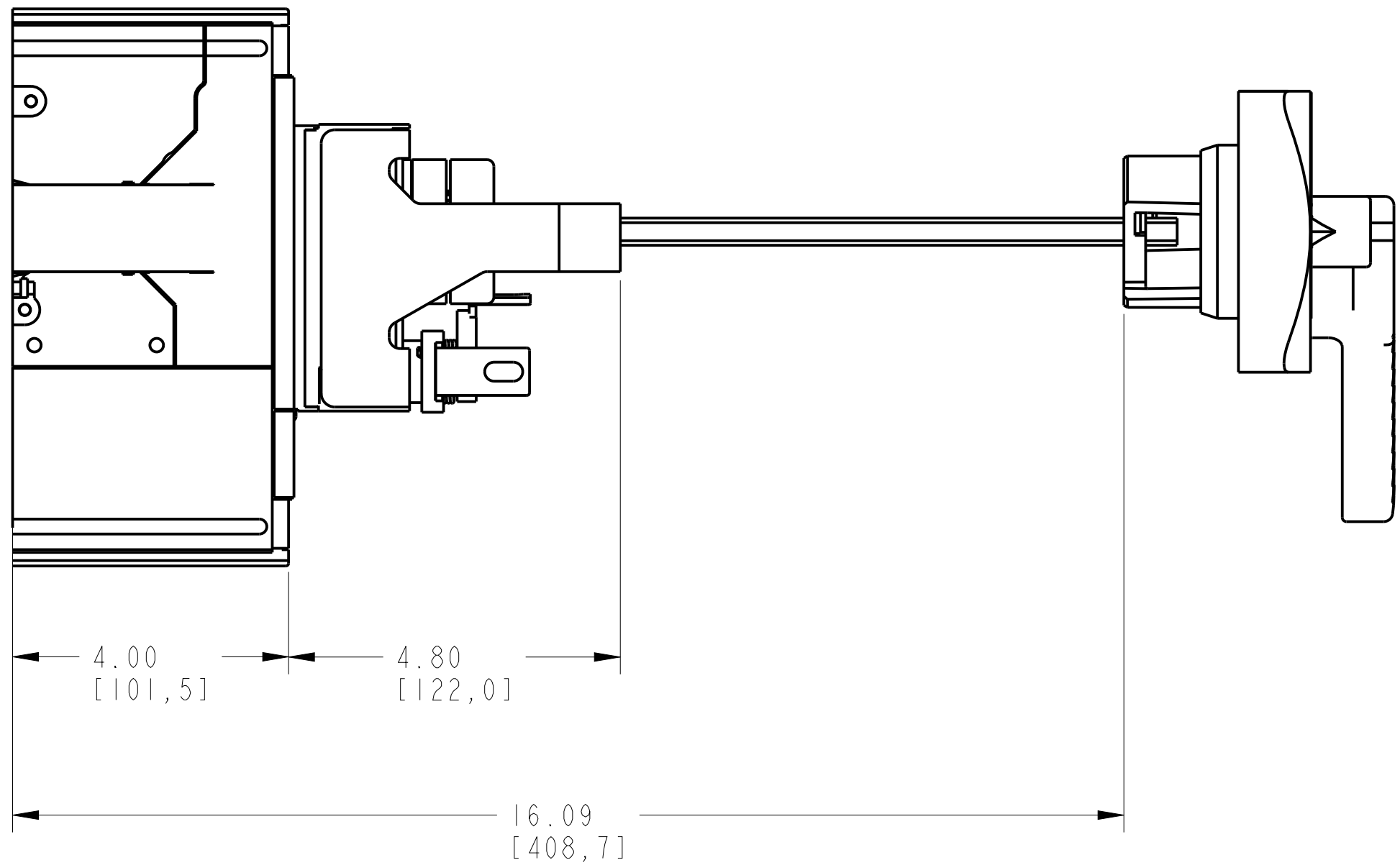
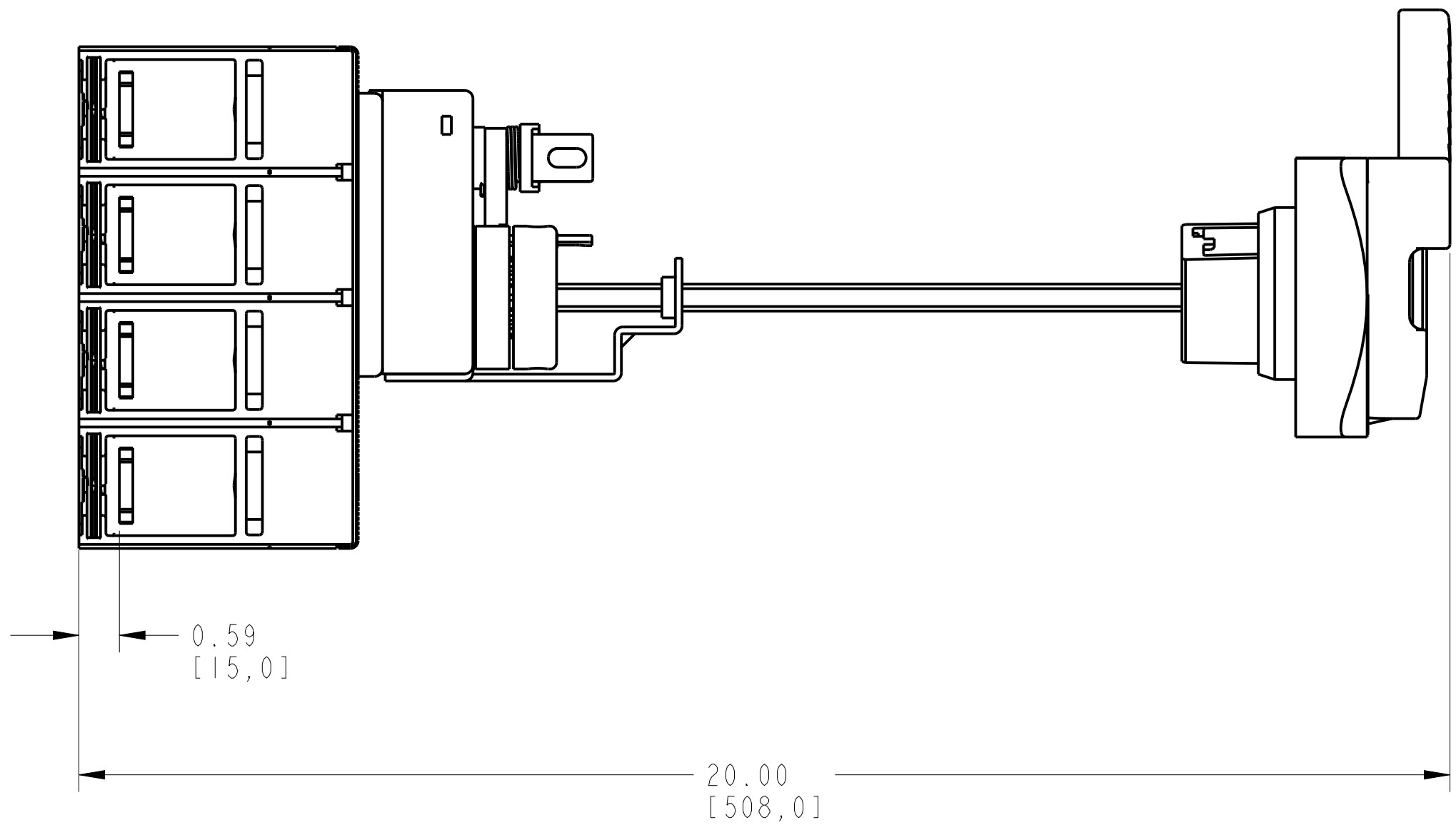


12			
ROTARY MECHANISM ASSEMBLY			
ITEM	DESCRIPTION	QTY	AB CAT NUMBER
1	MOLDED CASE CIRCUIT BREAKER	1	140G-K-3P CB
2	ROTARY MECHANISM	1	140G-K-RMX
3	OPERATING SHAFT	1	-
4	DIRECT ROTARY EXTERNAL HANDLE	1	140U-HM4



ROTARY MECHANISM ASSEMBLED TO 140G-K-3-POLE  
SCALE 0.50:1

12			
ROTARY MECHANISM ASSEMBLY			
ITEM	DESCRIPTION	QTY	AB CAT NUMBER
1	MOLDED CASE CIRCUIT BREAKER	1	140G-K-4P CB
2	ROTARY MECHANISM	1	140G-K-RMX
3	OPERATING SHAFT	1	-
4	DIRECT ROTARY EXTERNAL HANDLE	1	140U-HM4



ROTARY MECHANISM ASSEMBLED TO 140G-K-4-POLE  
SCALE 0.50:1

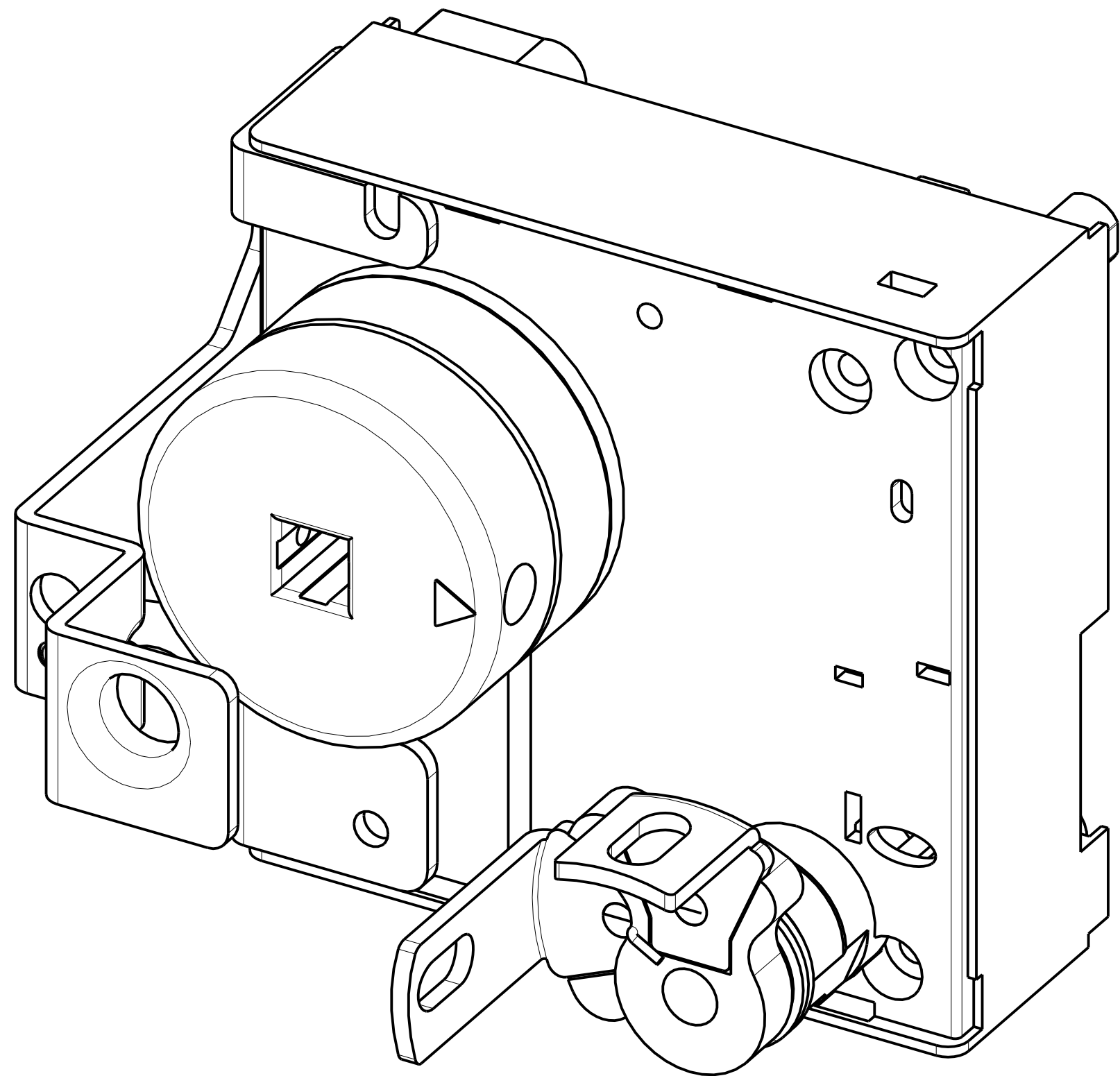
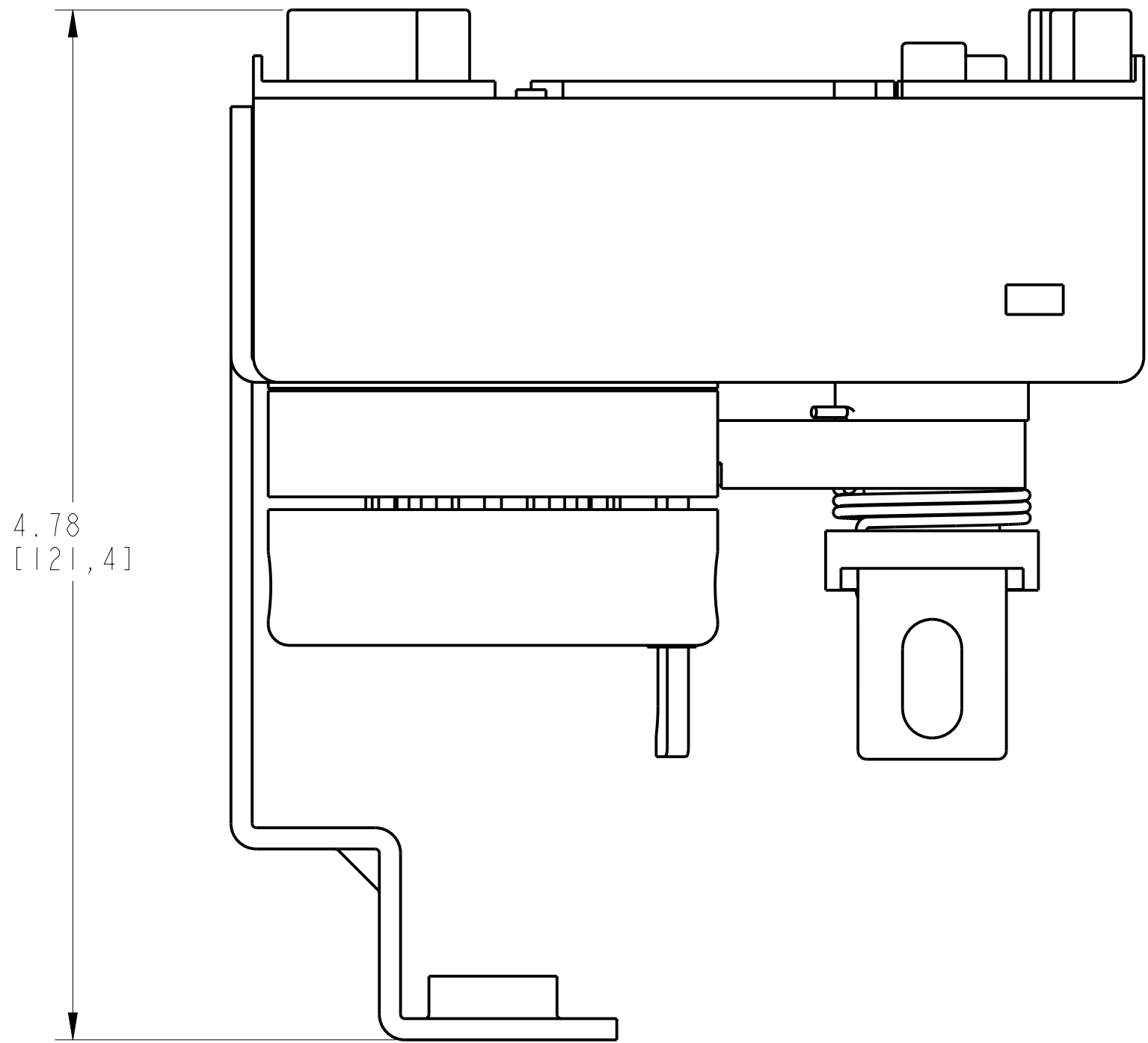
12345678

A

B

C

D



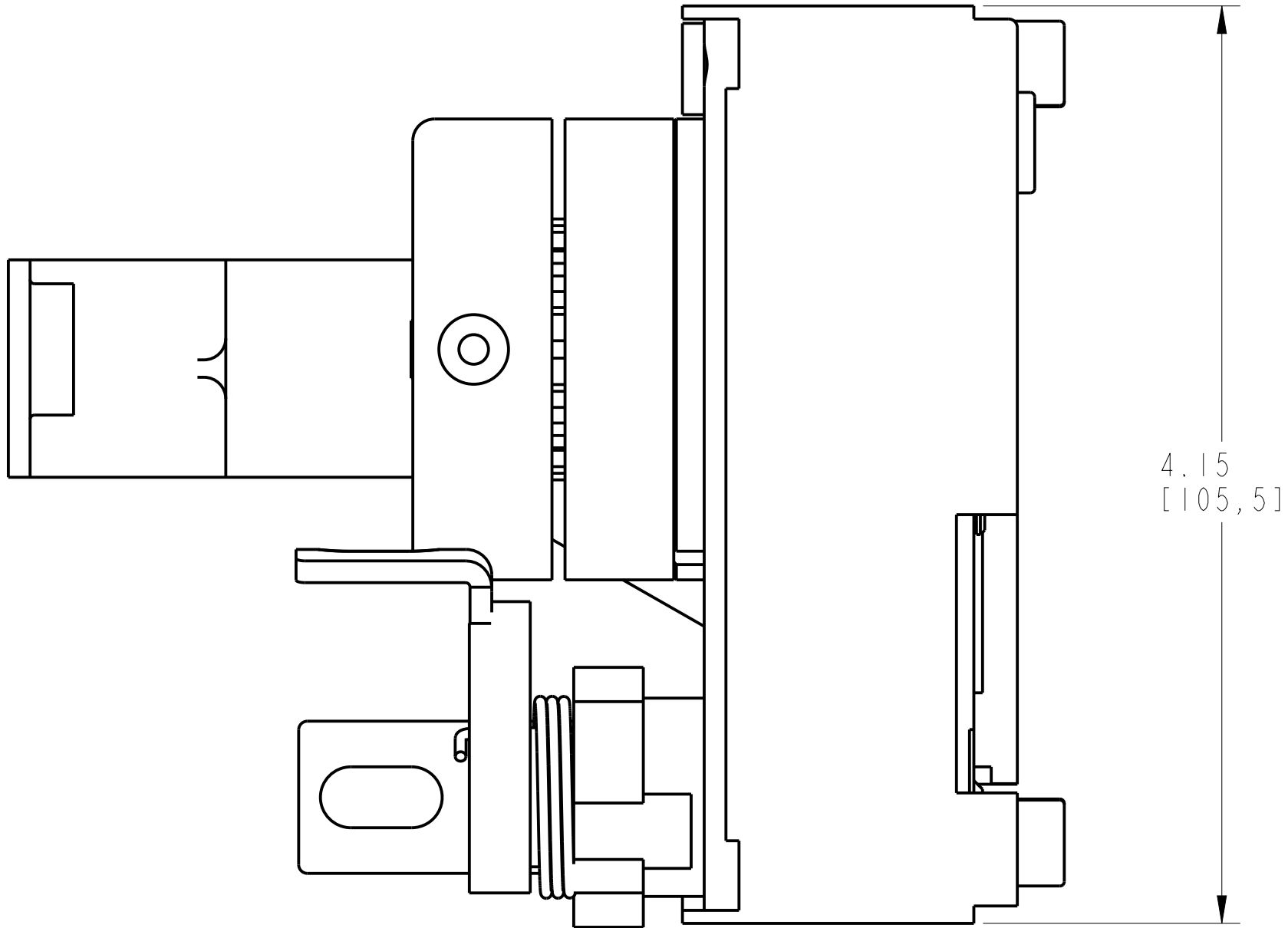
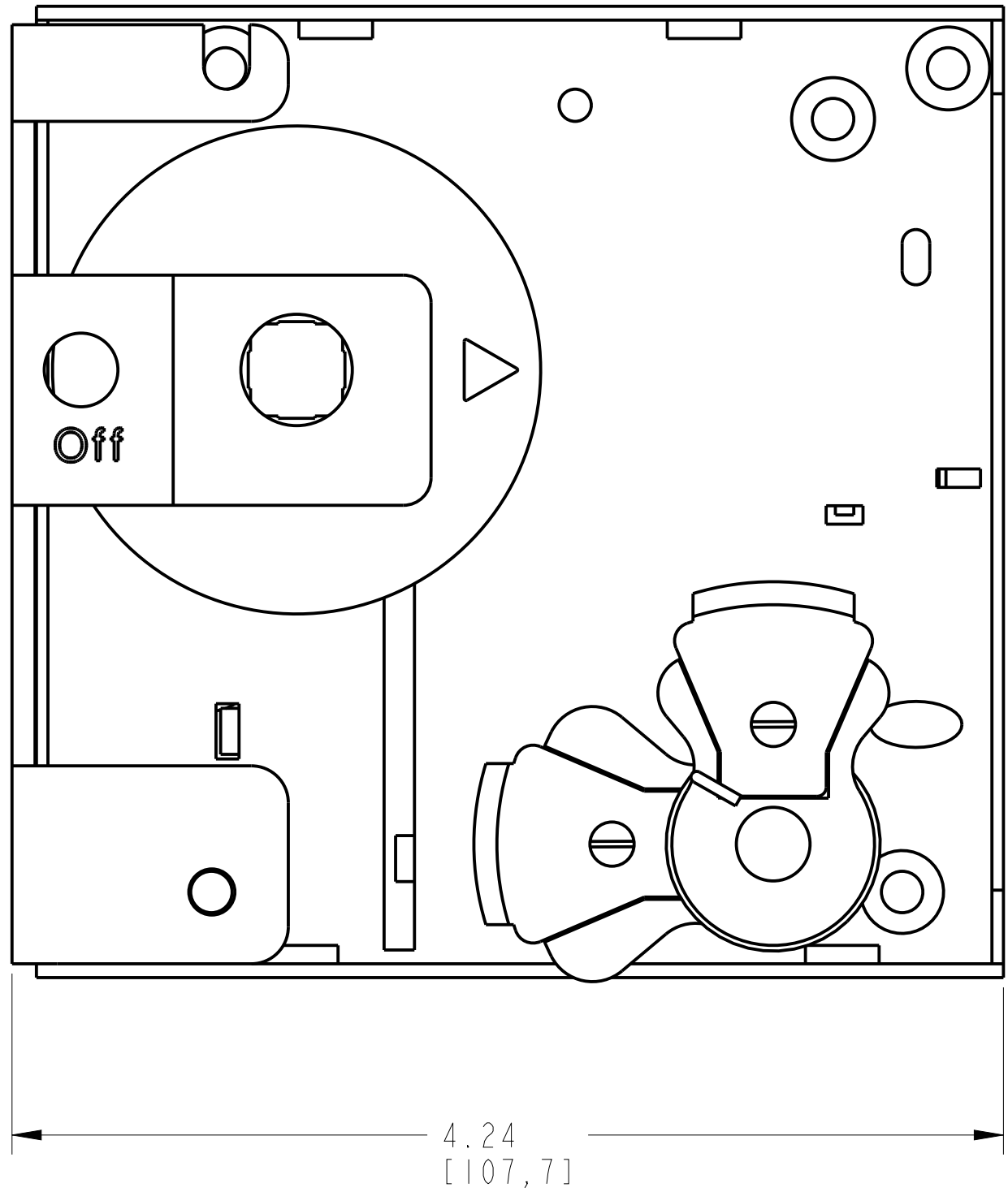
ISOMETRIC VIEW

E

F

G

H



ITEM 2 : ROTARY MECHANISM ASSEMBLY  
SCALE 1:50:1

<b>Rockwell Automation</b>		CONFIDENTIAL AND PROPRIETARY INFORMATION. THIS DOCUMENT CONTAINS CONFIDENTIAL AND PROPRIETARY INFORMATION OF ROCKWELL AUTOMATION, INC. AND MAY NOT BE USED, COPIED OR DISCLOSED TO OTHERS, EXCEPT WITH THE AUTHORIZED WRITTEN PERMISSION OF ROCKWELL AUTOMATION, INC.	
RMX ASSEMBLED TO 140G-K-3P & 4P CB		Sheet 3 Of 4	Ver
Drawn by: UMUNUSW	Date: 09-Dec-13	D 10000880966	00

