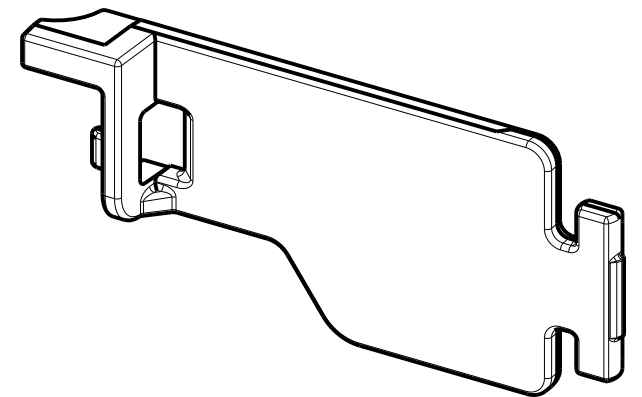
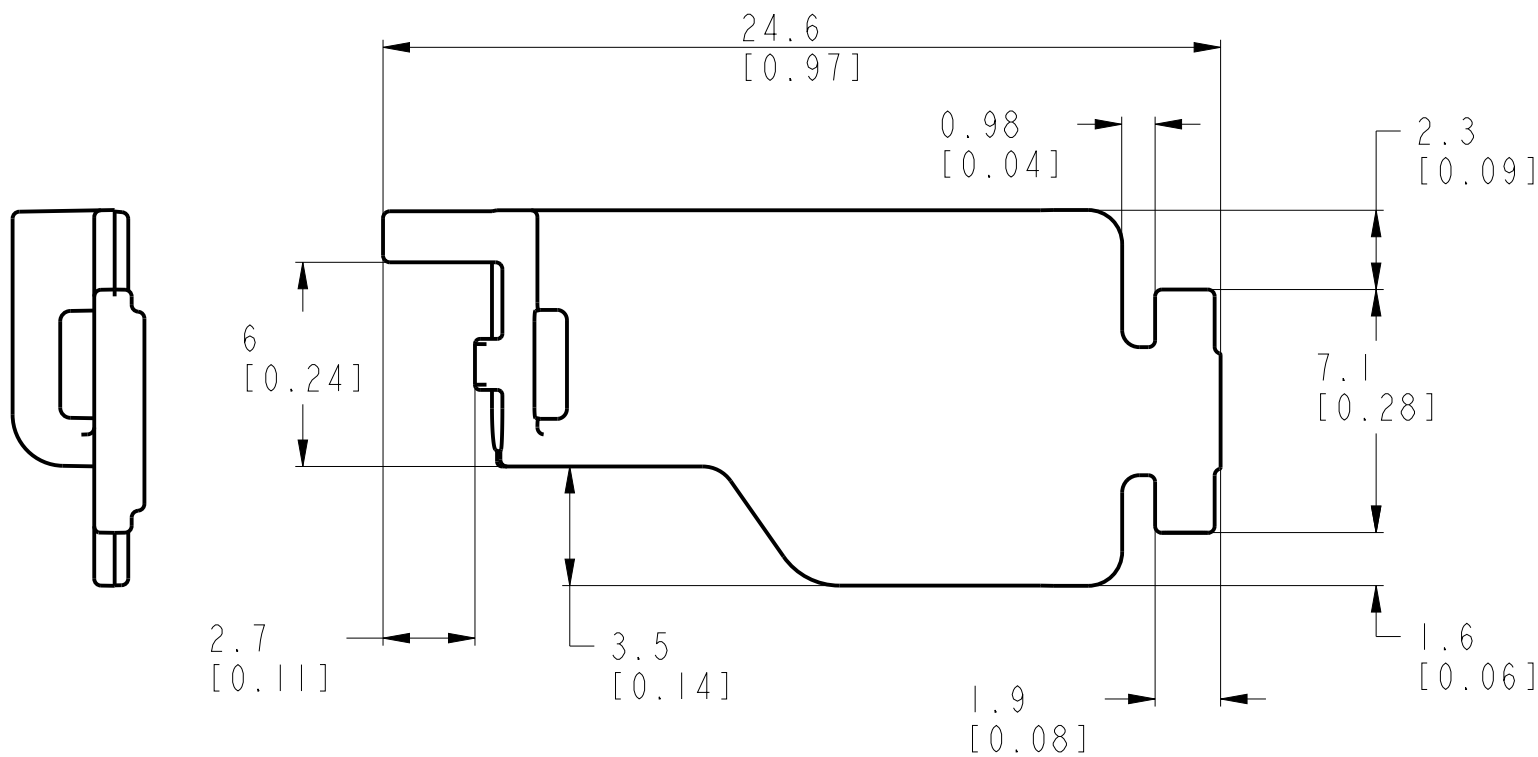
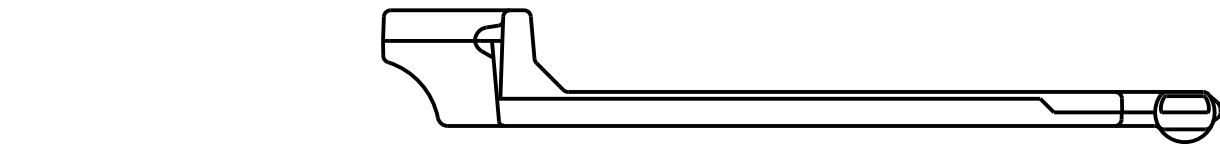



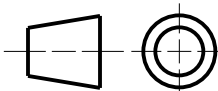
CRITICAL TO QUALITY CLASSIFICATION TABLE				
P=PERFORMANCE, F=FIT, A=ASSEMBLY X=IDENTIFIES APPLICABLE CLASSIFICATION(S) ◇=ENGINEERING AND/OR MANUFACTURING REQUIREMENT Ⓢ=REGULATORY REQUIREMENT-CONFORMANCE IS MANDATORY				
COMMENTS	DRAWING ZONE	P	F	A
ROHS	GI-HI			X



3D VIEW

-Dimensions are shown in mm [inches]  
-Dimensions are not intended to be used  
for manufacturing purposes

MUST COMPLY WITH ROCKWELL  
AUTOMATION ENVIRONMENTAL  
SPECIFICATION 970-20-01

				10005912143		PN-514108			
WORKMANSHIP STANDARDS		FINISH		MATERIAL		MODEL/DIR NO.		PART/MMR NUMBER	
ALL UNDIMENSIONED GEOMETRIES ARE CONTROLLED BY THE CAD MODEL. IN CASE OF DIMENSION DISCREPANCY, CAD MODEL OVERRIDES.		<div> <b>Rockwell Automation</b></div>				CONFIDENTIAL AND PROPRIETARY INFORMATION. THIS DOCUMENT CONTAINS CONFIDENTIAL AND PROPRIETARY INFORMATION OF ROCKWELL AUTOMATION, INC. AND MAY NOT BE USED, COPIED OR DISCLOSED TO OTHERS, EXCEPT WITH THE AUTHORIZED WRITTEN PERMISSION OF ROCKWELL AUTOMATION, INC.			
FIRST ANGLE PROJECTION		DESCRIPTION <div>140MT-C-CA</div>				DATE: 2021-01-04		SHEET 1 OF 1	
						SIZE <div>A3</div>		DIR <div>10005934354</div>	
CREATED BY: RPAMPAT				CHANGED BY: -					