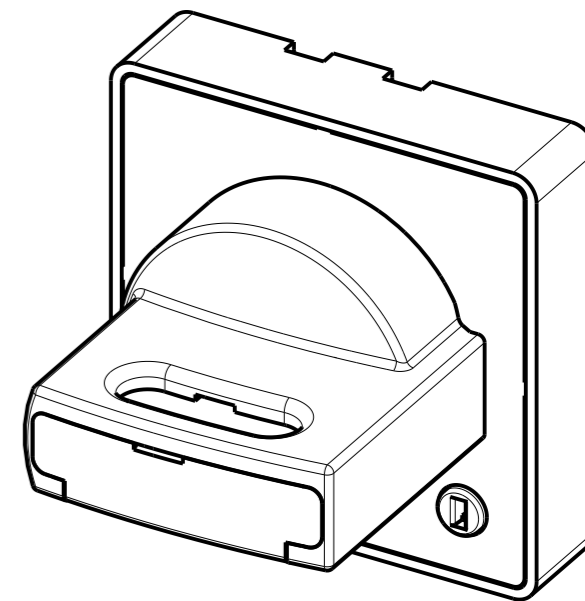
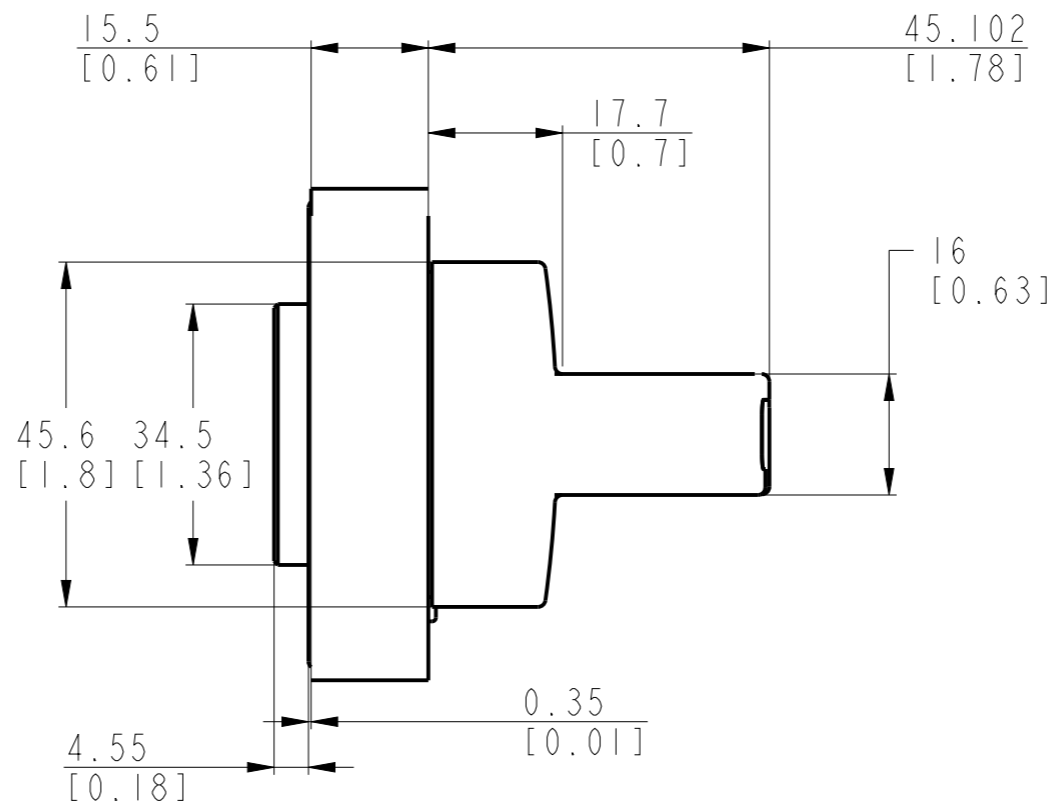
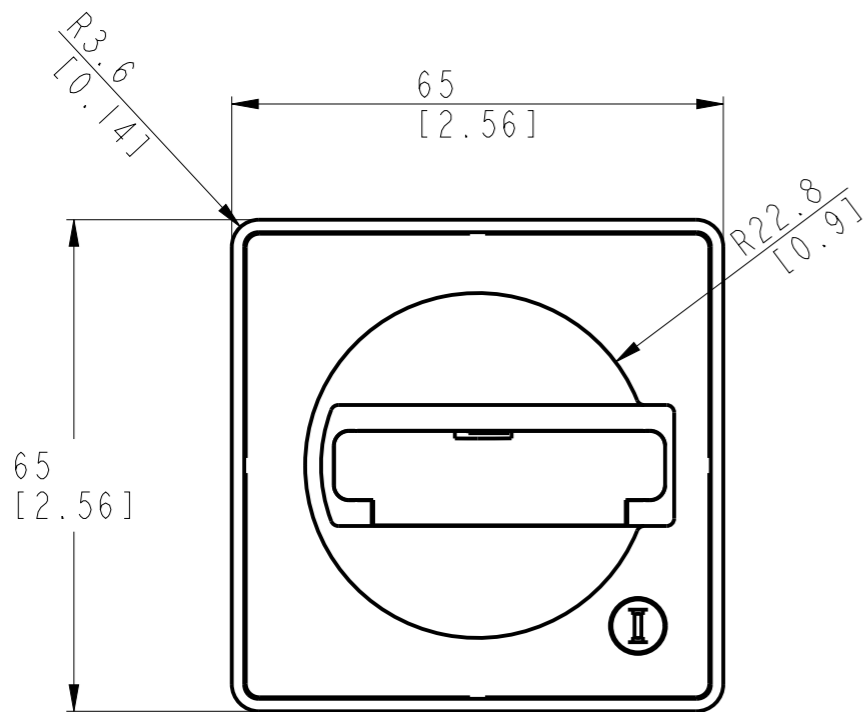



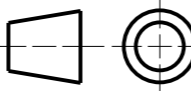
CRITICAL TO QUALITY CLASSIFICATION TABLE				
P=PERFORMANCE, F=FIT, A=ASSEMBLY X=IDENTIFIES APPLICABLE CLASSIFICATION(S) ◇=ENGINEERING AND/OR MANUFACTURING REQUIREMENT Ⓢ=REGULATORY REQUIREMENT-CONFORMANCE IS MANDATORY				
COMMENTS	DRAWING ZONE	P	F	A
ROHS	GI-HI			X



3D VIEW

-Dimensions are shown in mm [inches]
-Dimensions are not intended to be used
for manufacturing purposes

MUST COMPLY WITH ROCKWELL
AUTOMATION ENVIRONMENTAL
SPECIFICATION 970-20-01

				10005927058	PN-514052
				10005927058	PN-514049
WORKMANSHIP STANDARDS	FINISH	MATERIAL		MODEL/DIR NO.	PART/MMR NUMBER
ALL UNDIMENSIONED GEOMETRIES ARE CONTROLLED BY THE CAD MODEL. IN CASE OF DIMENSION DISCREPANCY, CAD MODEL OVERRIDES.		 Rockwell Automation		CONFIDENTIAL AND PROPRIETARY INFORMATION. THIS DOCUMENT CONTAINS CONFIDENTIAL AND PROPRIETARY INFORMATION OF ROCKWELL AUTOMATION, INC. AND MAY NOT BE USED, COPIED OR DISCLOSED TO OTHERS, EXCEPT WITH THE AUTHORIZED WRITTEN PERMISSION OF ROCKWELL AUTOMATION, INC.	
FIRST ANGLE PROJECTION		DESCRIPTION		DATE: 2020-12-23	SHEET 1 OF 1
		140MT-C-DN66, 140MT-C-DRY66		SIZE	VER
CREATED BY: RPAMPAT		CHANGED BY: -		A3	00
				DIR	
				10005927059	