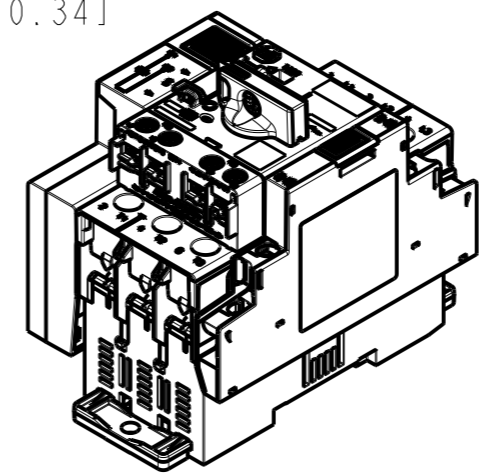
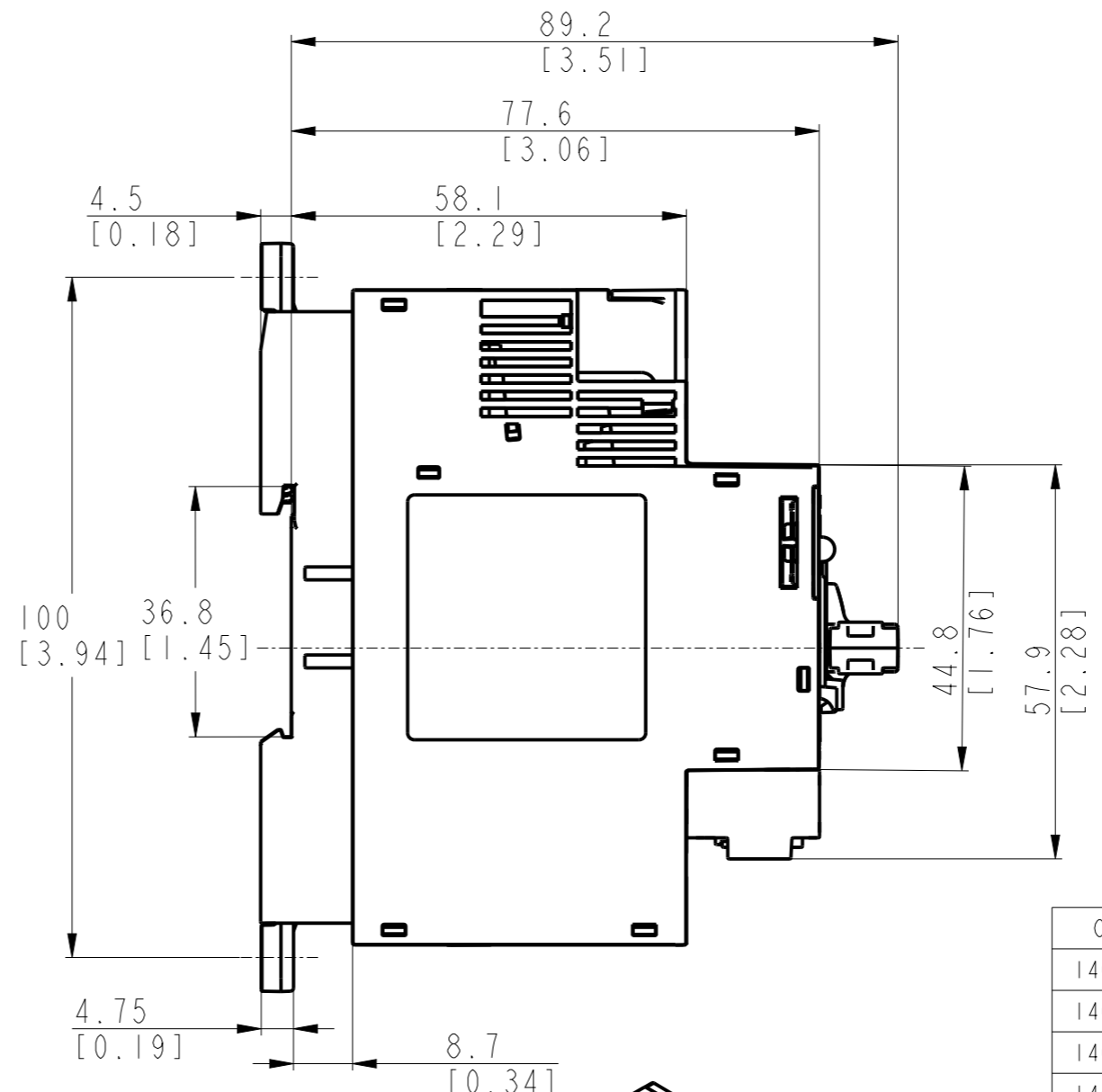
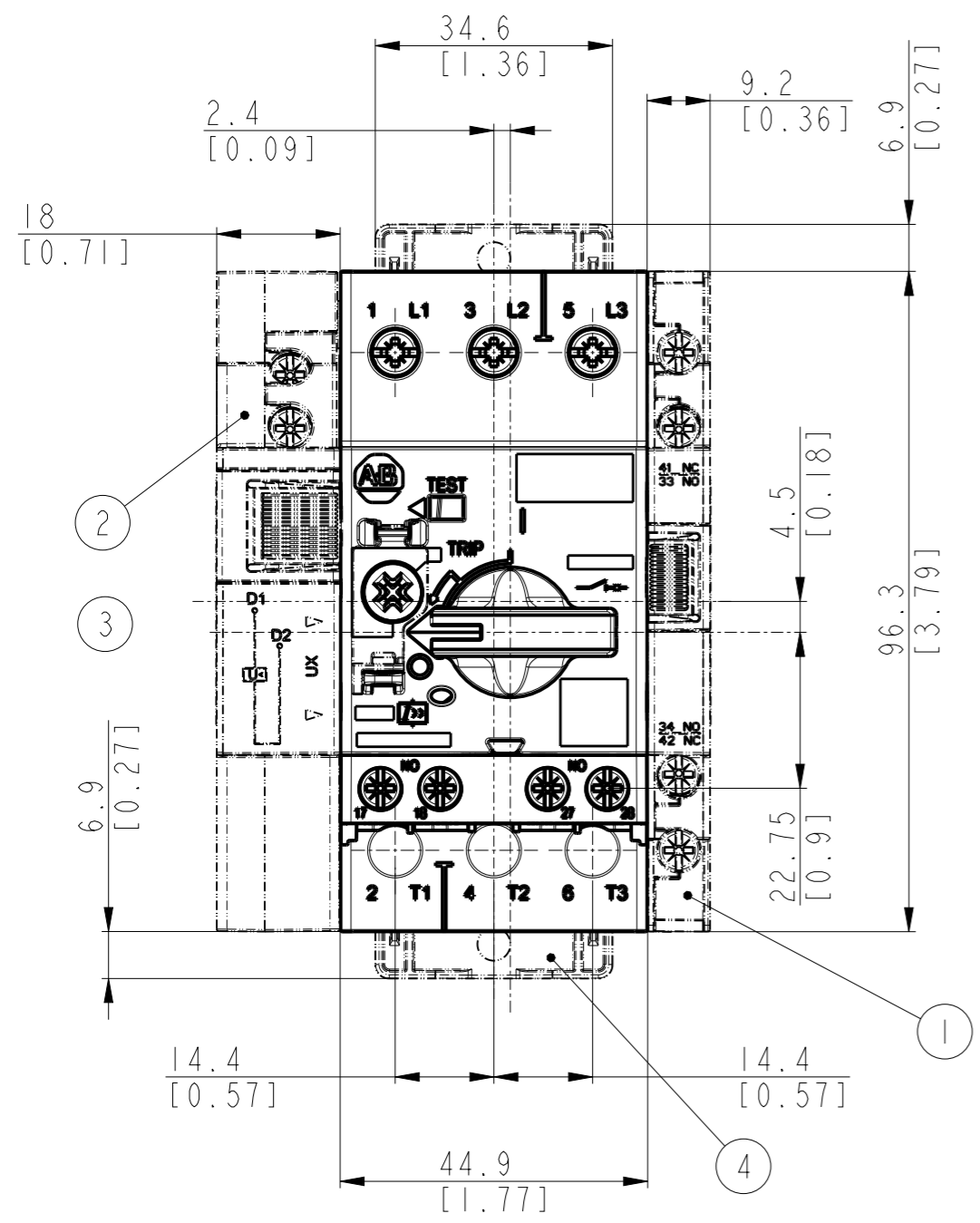


CRITICAL TO QUALITY CLASSIFICATION TABLE				
P=PERFORMANCE, F=FIT, A=ASSEMBLY				
X=IDENTIFIES APPLICABLE CLASSIFICATION(S)				
◇=ENGINEERING AND/OR MANUFACTURING REQUIREMENT				
Ⓢ=REGULATORY REQUIREMENT-CONFORMANCE IS MANDATORY				
COMMENTS	DRAWING ZONE	P	F	A
ROHS	GI-HI			X



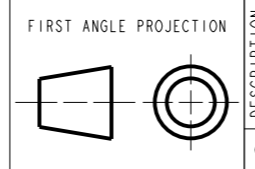
- ① Side Mounted, Auxiliary Contact 140MT-C-ASA*
- ② Undervoltage trip or Shunt trip 140MT-C-UX*
140MT-C-SN*
- ③ Front Mount, Auxiliary Contact 140MT-C-AFA*
- ④ Screw Mounting Adapter 140MT-C-N45

Catalog No	Model/Dir No	Material No
140MT-D9E-C40	10002007269	PN-494484
140MT-D9E-C36		PN-494482
140MT-D9E-C32		PN-494481
140MT-D9E-C29		PN-494479
140MT-D9E-C25		PN-494478
140MT-D9E-C20		PN-494475
140MT-D9E-C16		PN-494474
140MT-D9E-C10		PN-494473
140MT-D9E-B63		PN-494472
140MT-D9E-B40		PN-494470
140MT-D9E-B25		PN-494464
140MT-D9E-B16		PN-494450
140MT-D9E-B10		PN-494449
140MT-D9E-A63		PN-494448

MUST COMPLY WITH ROCKWELL AUTOMATION ENVIRONMENTAL SPECIFICATION 970-20-01

-Dimensions are shown in mm [inches]
-Dimensions are not intended to be used for manufacturing purposes

ALL UNDIMENSIONED GEOMETRIES ARE CONTROLLED BY THE CAD MODEL. IN CASE OF DIMENSION DISCREPANCY, CAD MODEL OVERRIDES.



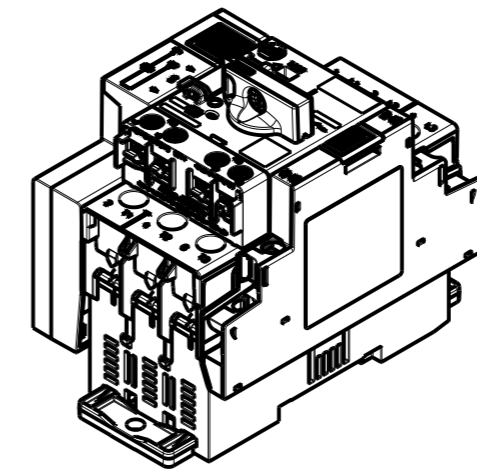
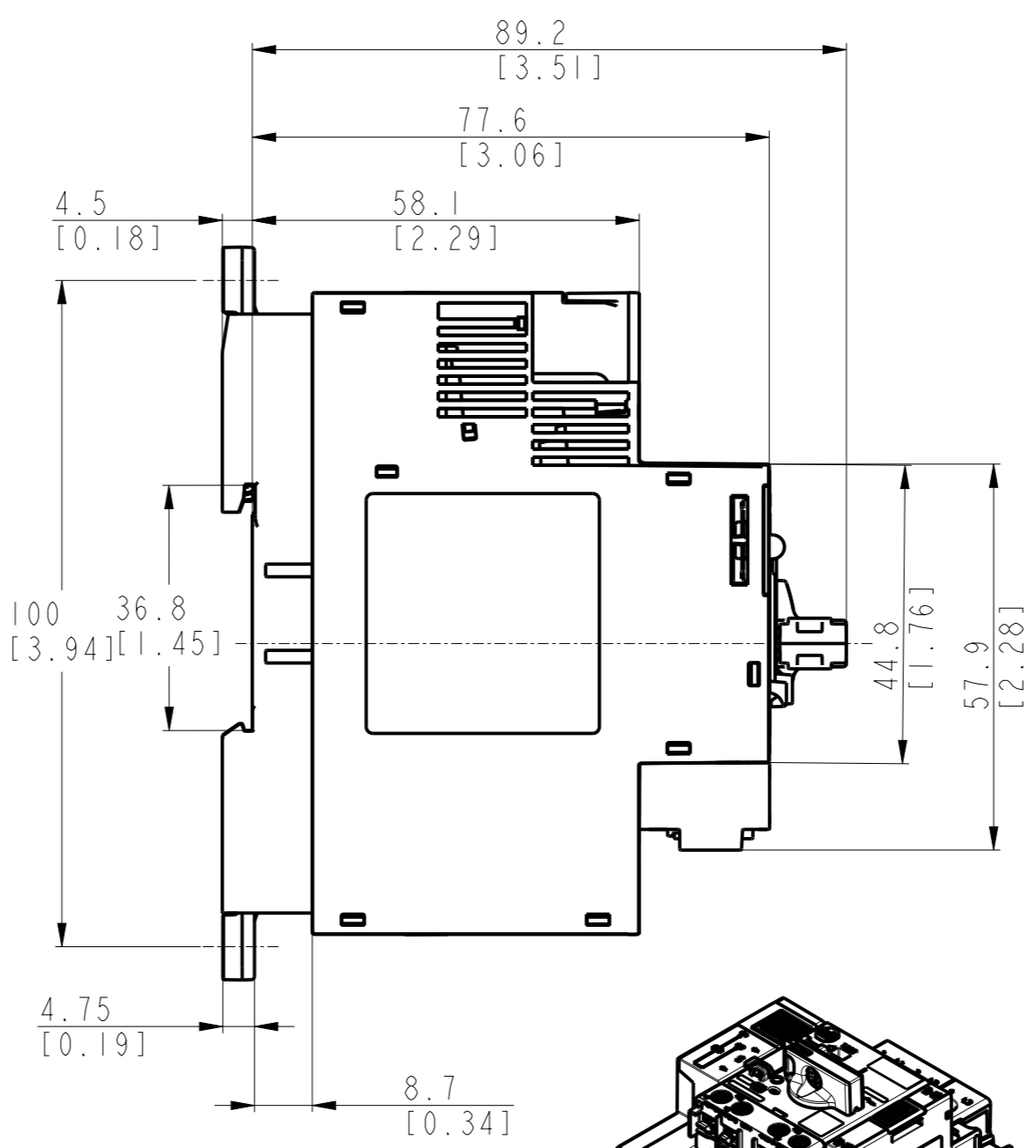
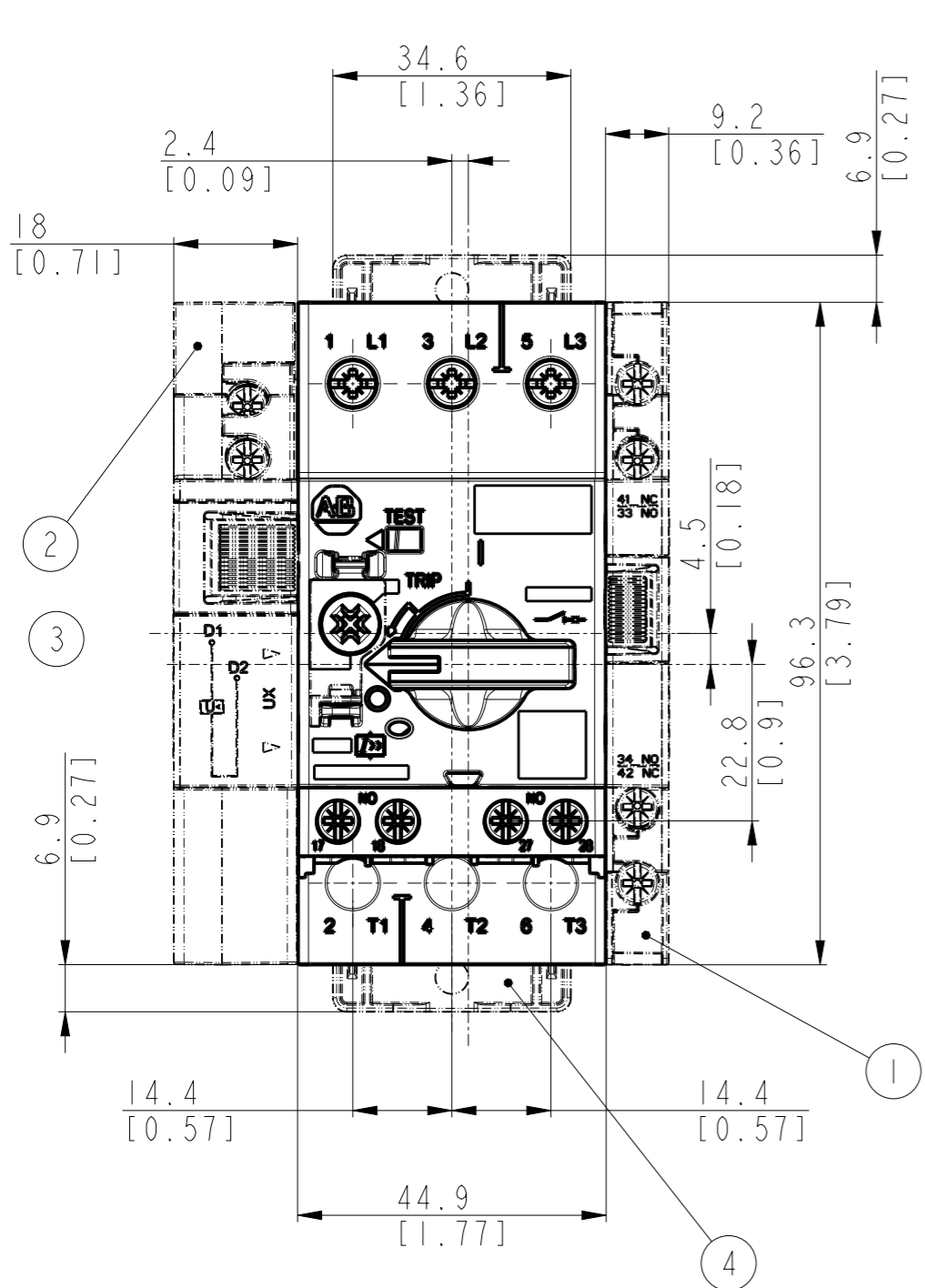
140MT-D9E, 140MT-D9T, 140MT-D9V

CONFIDENTIAL AND PROPRIETARY INFORMATION. THIS DOCUMENT CONTAINS CONFIDENTIAL AND PROPRIETARY INFORMATION OF ROCKWELL AUTOMATION, INC. AND MAY NOT BE USED, COPIED OR DISCLOSED TO OTHERS, EXCEPT WITH THE AUTHORIZED WRITTEN PERMISSION OF ROCKWELL AUTOMATION, INC.

DATE: 2021-08-20	SHEET 1 OF 2
SIZE: A3	DIR: 10005894318
VER: 00	

CREATED BY: RPAMPAT CHANGED BY: PKLANDE

CRITICAL TO QUALITY CLASSIFICATION TABLE					
P=PERFORMANCE, F=FIT, A=ASSEMBLY					
X=IDENTIFIES APPLICABLE CLASSIFICATION(S)					
◇=ENGINEERING AND/OR MANUFACTURING REQUIREMENT					
Ⓢ=REGULATORY REQUIREMENT-CONFORMANCE IS MANDATORY					
COMMENTS	DRAWING ZONE	P	F	A	R
ROHS	GI-HI				X



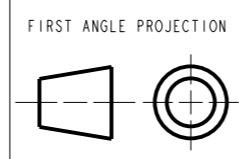
Catalog No	Model/Dir No	Material No
I40MT-D9T-A16	10002007269	PN-494528
I40MT-D9T-A25		PN-494532
I40MT-D9T-A40		PN-494534
I40MT-D9T-A63		PN-494536
I40MT-D9T-B10		PN-494539
I40MT-D9T-B16		PN-494541
I40MT-D9T-B25		PN-494543
I40MT-D9T-B40		PN-494546
I40MT-D9T-B63		PN-494548
I40MT-D9T-C10		PN-494551
I40MT-D9T-C16		PN-494553
I40MT-D9T-C20		PN-494556
I40MT-D9T-C25		PN-494557
I40MT-D9V-B16		PN-494558
I40MT-D9V-B25		PN-494559
I40MT-D9V-B40		PN-494561
I40MT-D9V-B63		PN-494562
I40MT-D9V-C10		PN-494563
I40MT-D9V-C16		PN-494564
I40MT-D9V-C20		PN-494565
I40MT-D9V-C25		PN-494566
I40MT-D9V-C29		PN-494567
I40MT-D9V-C32		PN-494568
I40MT-D9V-C36		PN-494570
I40MT-D9V-C40		PN-494573

- ① Side Mounted, Auxiliary Contact I40MT-C-ASA*
- ② Undervoltage trip or Shunt trip I40MT-C-UX*
I40MT-C-SN*
- ③ Front Mount, Auxiliary Contact I40MT-C-AFA*
- ④ Screw Mounting Adapter I40MT-C-N45

MUST COMPLY WITH ROCKWELL AUTOMATION ENVIRONMENTAL SPECIFICATION 970-20-01

-Dimensions are shown in mm [inches]
-Dimensions are not intended to be used for manufacturing purposes

ALL UNDIMENSIONED GEOMETRIES ARE CONTROLLED BY THE CAD MODEL. IN CASE OF DIMENSION DISCREPANCY, CAD MODEL OVERRIDES.



Rockwell Automation

DESCRIPTION: **140MT-D9E, 140MT-D9T, 140MT-D9V**

CREATED BY: RPAMPAT CHANGED BY: PKLANDE

CONFIDENTIAL AND PROPRIETARY INFORMATION. THIS DOCUMENT CONTAINS CONFIDENTIAL AND PROPRIETARY INFORMATION OF ROCKWELL AUTOMATION, INC. AND MAY NOT BE USED, COPIED OR DISCLOSED TO OTHERS, EXCEPT WITH THE AUTHORIZED WRITTEN PERMISSION OF ROCKWELL AUTOMATION, INC.

DATE: 2021-08-20 SHEET 2 OF 2

SIZE	DIR	VER
A3	10005894318	00