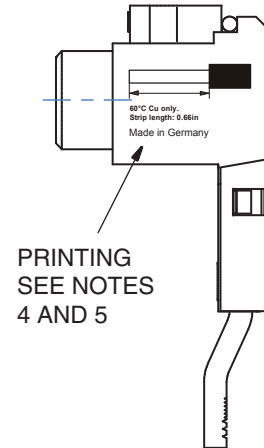
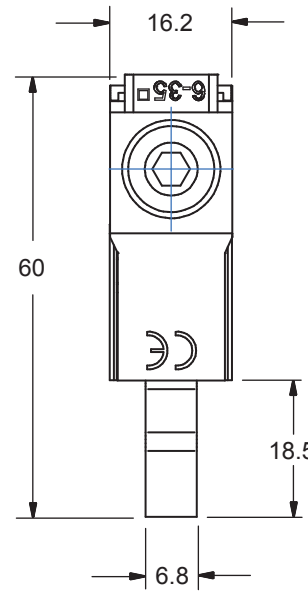
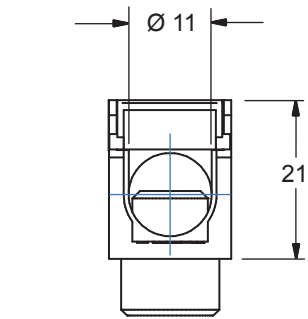
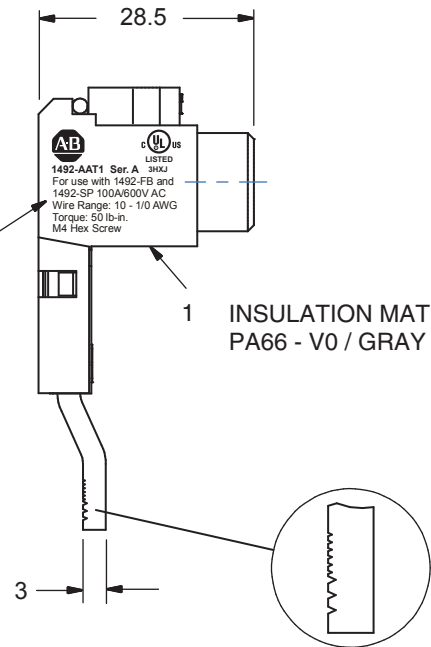
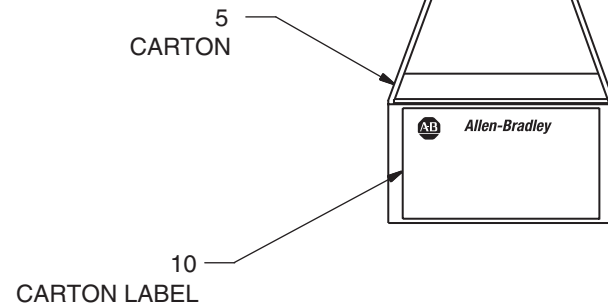
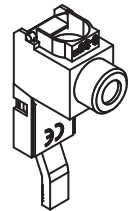


PRINTING
SEE NOTES
4 AND 5



PRINTING
SEE NOTES
4 AND 5



LABEL LOCATION AND ORIENTATION

10 TERMINALS TO BE PACKAGED
IN A CARTON WITH A CARTON LABEL ON IT.

BILL OF MATERIALS

AMT PER ASSY			PRT. REQ.	PART NUMBER	DESCRIPTION	IT.
		10		SEE NOTES 1 & 2	TERMINAL	1
		1		SEE NOTES 1 & 2	CARTON, WHITE CHIPBOARD	5
					0.6mm THICK (4 X 7 X 16cm)	
		1		PER 10000054430	CARTON LABEL	10
		0.1			ONE CATALOG UNIT	
	A	A	SER.	NOTES: 1. NO ALLEN-BRADLEY PART NUMBER. 2. SUPPLIED BY VENDOR. 3. ALL DIMENSIONS ARE REF. ONLY AND IN mm UNLESS OTHERWISE SPECIFIED. 4. RETAIN RELATIVE SIZE AND POSITION OF CHARACTERS AND MARKINGS AS SHOWN. 5. PRINTING - BLACK INK PAD TRANSFER.		
	1492-AAT1	1492-AAT1	ALLEN-BRADLEY CATALOG NO.			
	PN-35305		MATERIAL NO.			
		10	STD. PKG. QTY.			

Rockwell Automation

CONFIDENTIAL AND PROPRIETARY INFORMATION. THIS DOCUMENT CONTAINS CONFIDENTIAL AND PROPRIETARY INFORMATION OF ROCKWELL AUTOMATION, INC. AND MAY NOT BE USED, COPIED OR DISCLOSED TO OTHERS, EXCEPT WITH THE AUTHORIZED WRITTEN PERMISSION OF ROCKWELL AUTOMATION, INC.

END FEED TERMINAL
80/100A

Sheet 1 Of 1

Size

C

10000050422

Ver

00

Dr. G. Fillus

Date 3-12-09