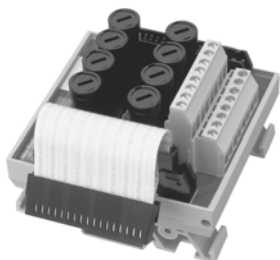


## 1492-XIMF-F24-2

*Fusible 8-Channel Expander with 24V DC Blown Fuse Indicators*



### *Application Notes*

1. **Compatibility** — To ensure proper operation with the I/O module, do **not** exceed the voltage and current ratings of the XIM.
2. **Wiring** — Refer to the Label Section on page 174. For Field-Side Wiring Diagrams, refer to the Wiring System web site information on page 200.
3. **Extra Terminals** — Eight field-side terminals are jumpered together on the XIM. For some I/O modules, the terminals are also internally connected to module common through the pre-wired cable. Refer to the XIM and CABLE pinouts.
4. **Dimensions** — Refer to page 166.
5. LEDs provide blown fuse indication.

### *Pinout*

Refer to page 128.

### 1492-XIMF-F24-2, Continued

*Pinout, Continued*

