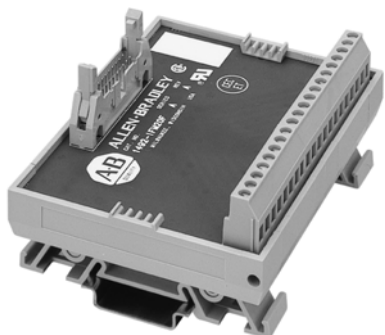


1492-IFM20F
1492-RIFM20F

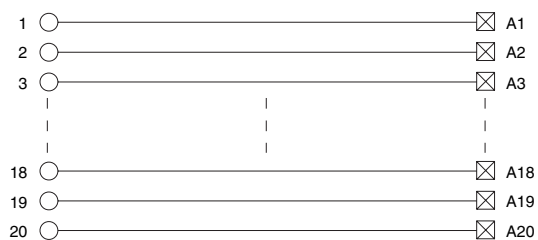
Feed-Through Standard 264V AC/DC Max.



Application Notes

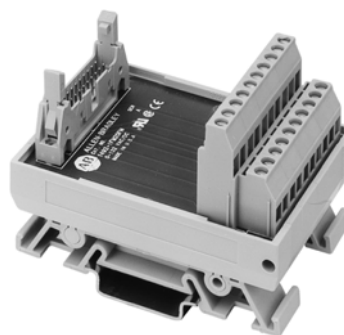
1. **Compatibility** — To ensure proper operation with the I/O module, do **not** exceed the voltage and current ratings of the IFM.
2. **Wiring** — Refer to the Label Section on page 174. For Field-Side Wiring Diagrams, refer to the Wiring System web site information on page 200.
3. **Dimensions** — Refer to page 172.

Pinout



1492-IFM20FN
1492-RIFM20FN

Feed-Through Narrow Standard 132V AC/DC Max



Application Notes

1. **Compatibility** — To ensure proper operation with the I/O module, do **not** exceed the voltage and current ratings of the IFM.
2. **Wiring** — Refer to the Label Section on page 174. For Field-Side Wiring Diagrams, refer to the Wiring System web site information on page 200.
3. **Dimensions** — Refer to page 173.

Pinout

