

PARTS MUST CONFORM TO APPLICABLE ROCKWELL AUTOMATION MANUFACTURING STANDARDS

CAD DOCUMENT

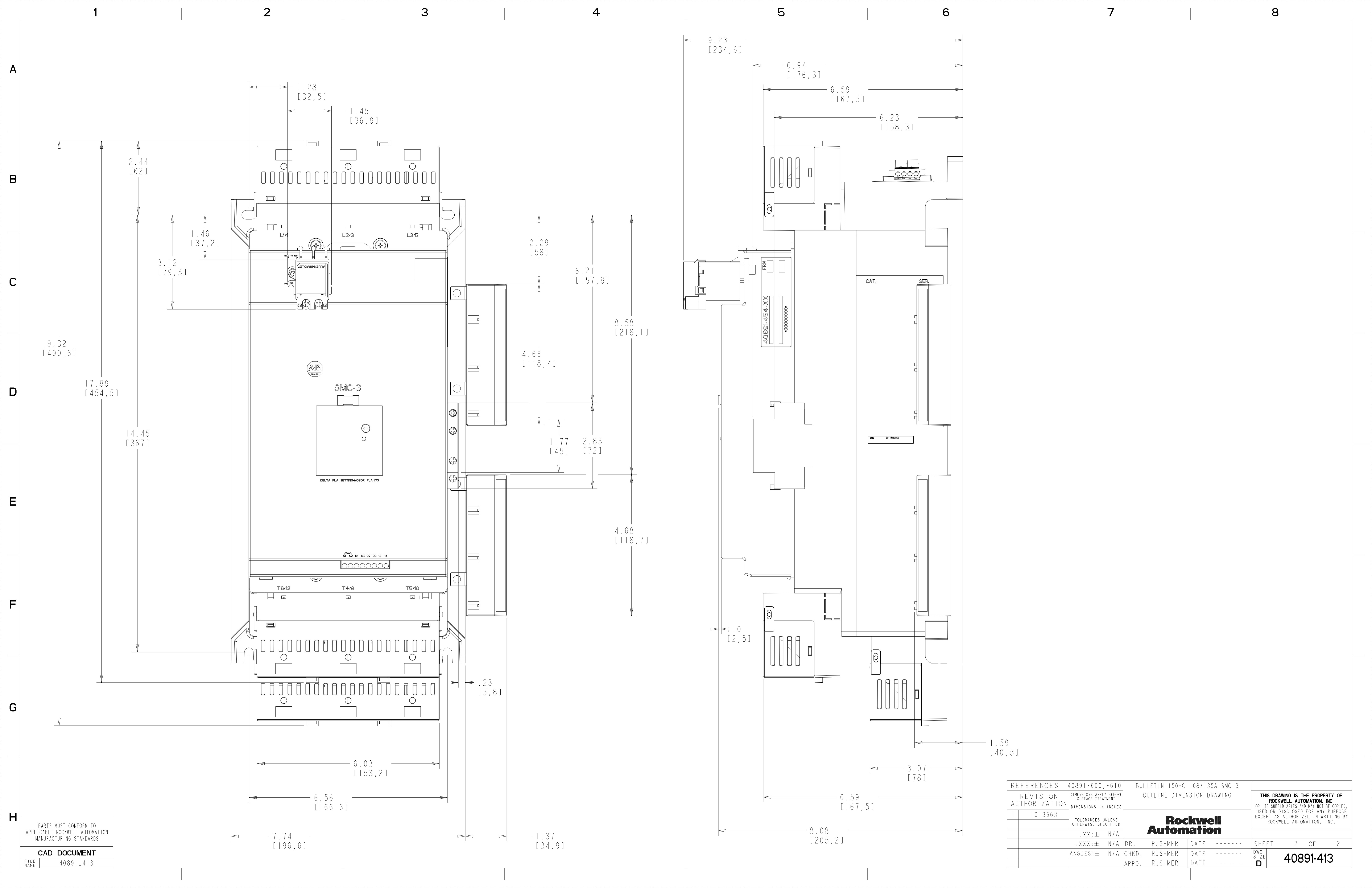
FILE NAME 40891_413

NOTE:

1) DIMENSIONS IN INCHES [MILLIMETERS].

2) DIMENSIONS ARE NOT TO BE USED FOR MANUFACTURING PURPOSES.

REFERENCES	40891-600, -610	BULLETIN 150-C 108/135A SMC 3	THIS DRAWING IS THE PROPERTY OF ROCKWELL AUTOMATION, INC. OR ITS SUBSIDIARIES AND MAY NOT BE COPIED, USED OR DISCLOSED FOR ANY PURPOSE EXCEPT AS AUTHORIZED IN WRITING BY ROCKWELL AUTOMATION, INC.	
REVISION AUTHORIZATION	DIMENSIONS APPLY BEFORE SURFACE TREATMENT	OUTLINE DIMENSION DRAWING		
1 1013663	DIMENSIONS IN INCHES			
	TOLERANCES UNLESS OTHERWISE SPECIFIED		DR. RUSHMER	DATE 3-15-05
	.XX:± N/A		CHKD. RUSHMER	DATE 3-15-05
	.XXX:± N/A		APPD. RUSHMER	DATE 3-15-05
	ANGLES:± N/A			
			SHEET 1 OF 2	DWG. SIZE D
				40891-413



19.32
[490,6]

17.89
[454,5]

14.45
[367]

PARTS MUST CONFORM TO
APPLICABLE ROCKWELL AUTOMATION
MANUFACTURING STANDARDS

CAD DOCUMENT

FILE NAME 40891_413

REFERENCES	40891-600, -610	BULLETIN 150-C 108/135A SMC 3	THIS DRAWING IS THE PROPERTY OF ROCKWELL AUTOMATION, INC. OR ITS SUBSIDIARIES AND MAY NOT BE COPIED, USED OR DISCLOSED FOR ANY PURPOSE EXCEPT AS AUTHORIZED IN WRITING BY ROCKWELL AUTOMATION, INC.
REVISION AUTHORIZATION	DIMENSIONS APPLY BEFORE SURFACE TREATMENT DIMENSIONS IN INCHES	OUTLINE DIMENSION DRAWING	
1	1013663	TOLERANCES UNLESS OTHERWISE SPECIFIED	<p align="center">Rockwell Automation</p> <p>DR. RUSHMER DATE ----- SHEET 2 OF 2</p> <p>CHKD. RUSHMER DATE ----- DWG. SIZE</p> <p>APPD. RUSHMER DATE ----- D</p>
		.XX:± N/A	
		.XXX:± N/A	
		ANGLES:± N/A	
			40891-413