

400 AMP ISOLATING SWITCH
CLIP-ON FUSES

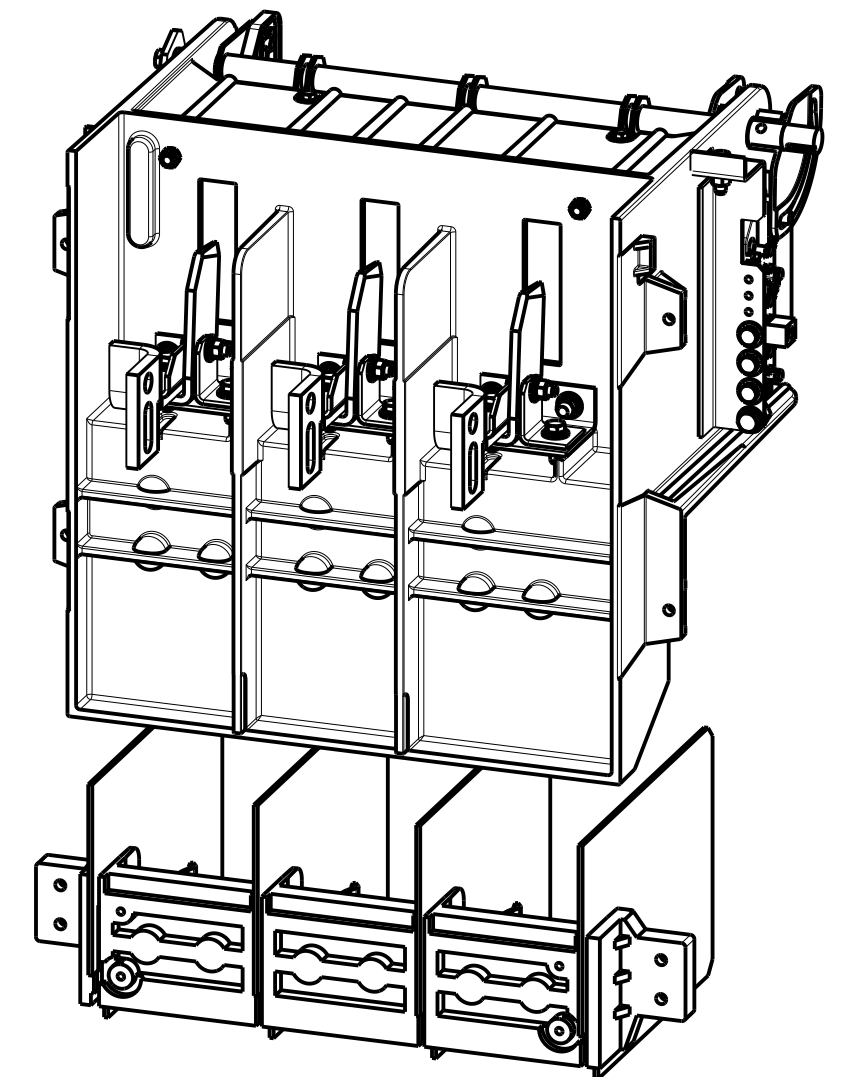
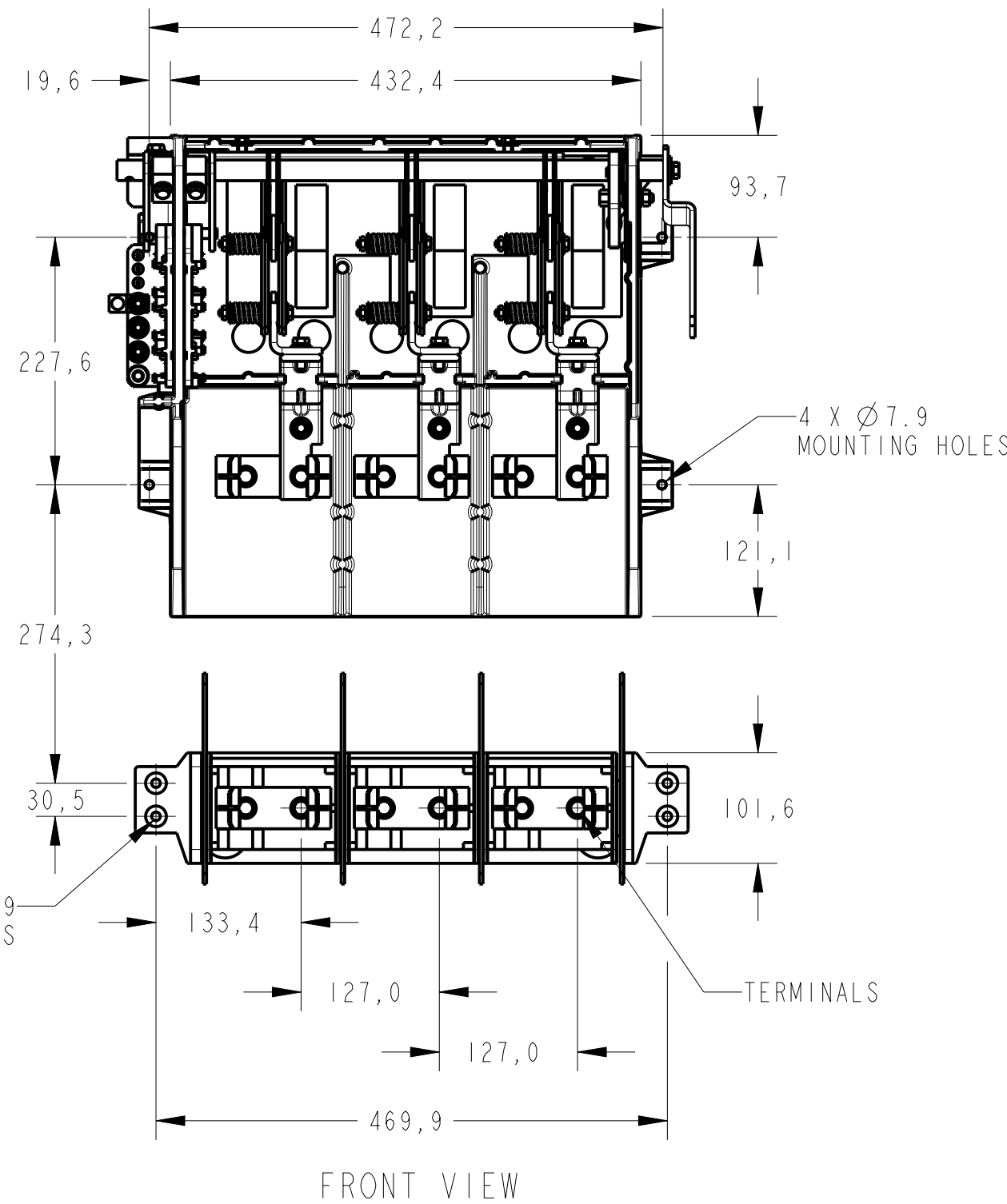
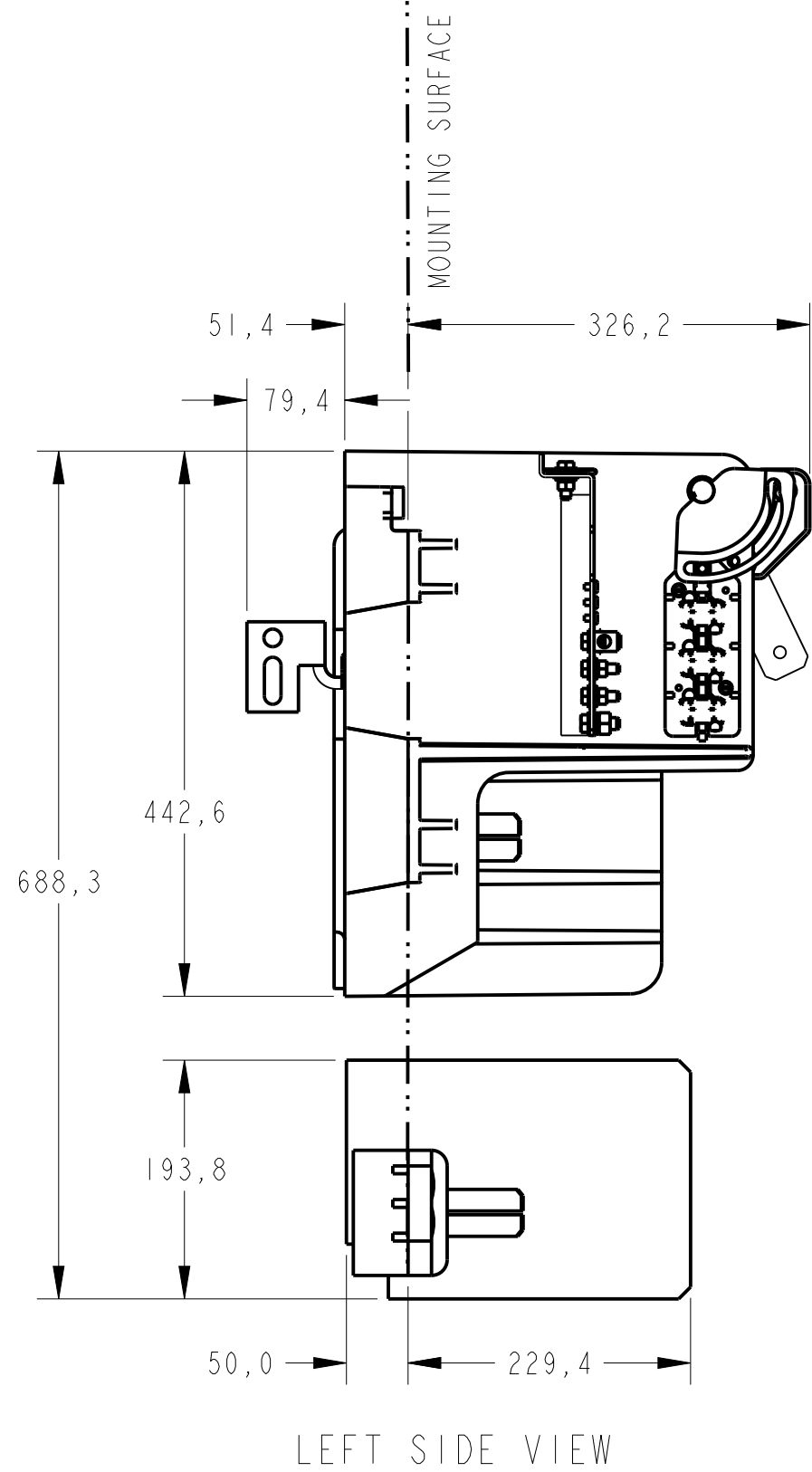
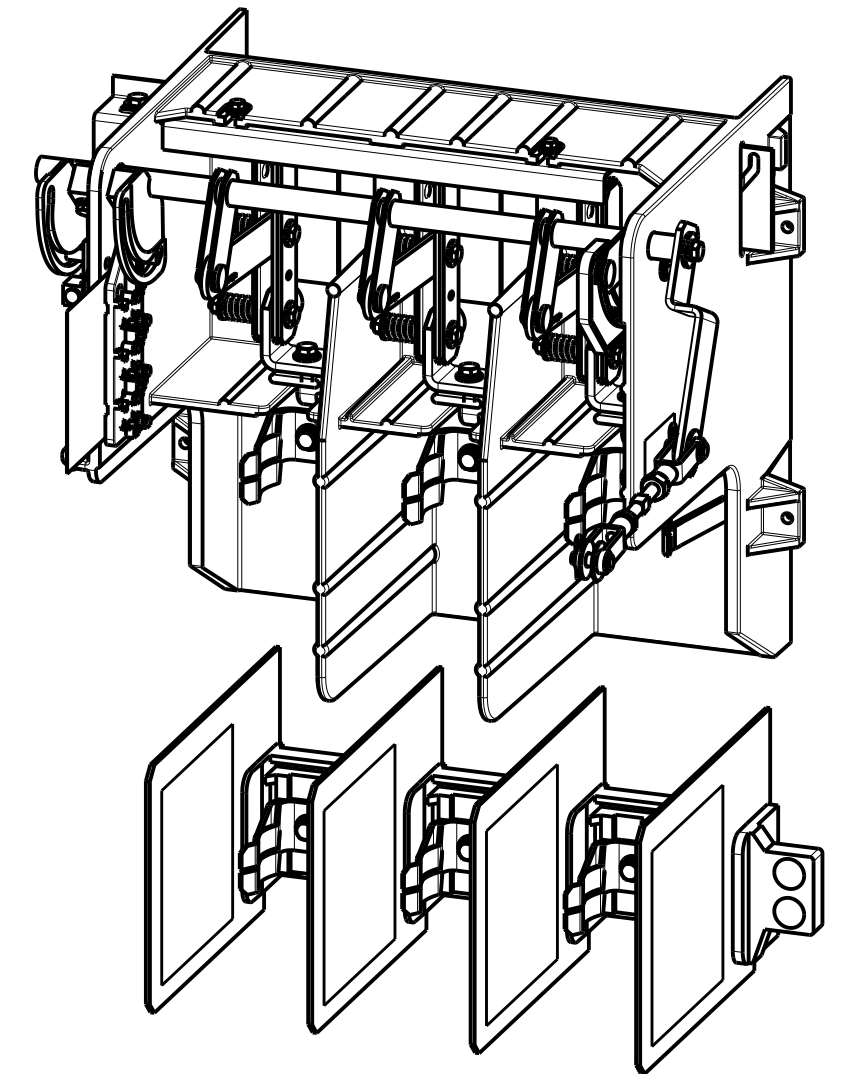
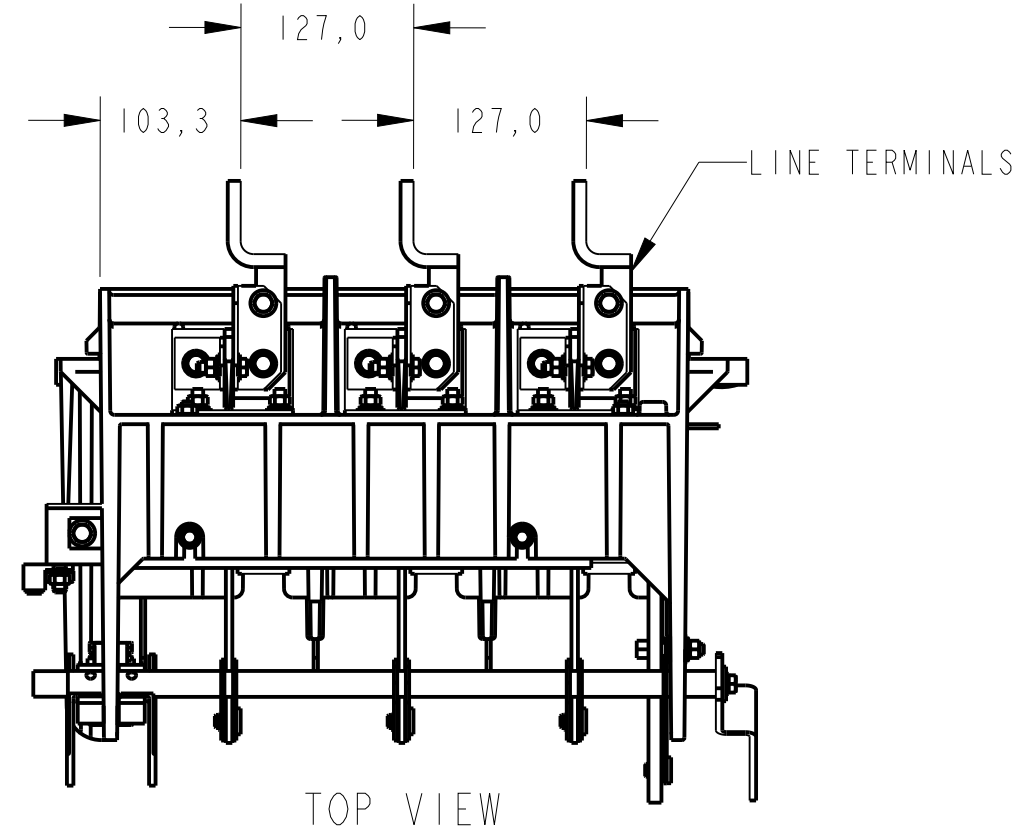
OVERALL DIMENSIONS

WIDTH: 490.0
HEIGHT: 669.0
DEPTH: 387.0
WEIGHT: 30kg

CRITICAL TO QUALITY CLASSIFICATION TABLE

P=PERFORMANCE, F=FIT, A=ASSEMBLY
X=IDENTIFIES APPLICABLE CLASSIFICATION(S)
◇=ENGINEERING AND/OR MANUFACTURING REQUIREMENT
⊕=REGULATORY REQUIREMENT-CONFORMANCE IS MANDATORY

COMMENTS	DRAWING ZONE	P	F	A	R
ROHS	G1-H1				X



MUST COMPLY WITH ROCKWELL AUTOMATION ENVIRONMENTAL SPECIFICATION 970-20-01

- GENERAL NOTES:
- USE 1/4-20 THREAD ROLLING SCREWS TO MOUNT ISOLATING SWITCH AND BOTTOM FUSE HOLDER TO STRUCTURE.
 - USE 5/16-18 HARDWARE TORQUED TO 12.0 FT-LB [1.63 N-m] TO MAKE ELECTRICAL CONNECTIONS TO BOTTOM FUSE HOLDER.
 - USE 1/2-13 HARDWARE TORQUED TO 48.0 FT-LB [6.52 N-m] TO MAKE ELECTRICAL CONNECTIONS TO REAR OF ISOLATING SWITCH.

DIMENSION UNITS - mm	
UNLESS SPECIFIED THE FOLLOWING TOLERANCES APPLY (ISO/DIN MEDIUM).	
.X:±	0.8
.XX:±	0.30
ANG:±	1°

ALL UNDIMENSIONED GEOMETRIES ARE CONTROLLED BY THE CAD MODEL. IN CASE OF DIMENSION DISCREPANCY, CAD MODEL OVERRIDES.

THIRD ANGLE PROJECTION

Rockwell Automation

1500,400A ISOLATING SWITCH C/W FUSE SUPT
DIMENSION DRAWING

CREATED BY: T. EINWECHTER CHANGED BY: PAUL VAN HEESWYK

CONFIDENTIAL AND PROPRIETARY INFORMATION. THIS DOCUMENT CONTAINS CONFIDENTIAL AND PROPRIETARY INFORMATION OF ROCKWELL AUTOMATION, INC. AND MAY NOT BE USED, COPIED OR DISCLOSED TO OTHERS, EXCEPT WITH THE AUTHORIZED WRITTEN PERMISSION OF ROCKWELL AUTOMATION, INC.		
DATE: 1997-08-06	SHEET 1 OF 2	
SIZE DIR	80158-164	VER 10

400 AMP ISOLATING SWITCH
BOLT-ON FUSES

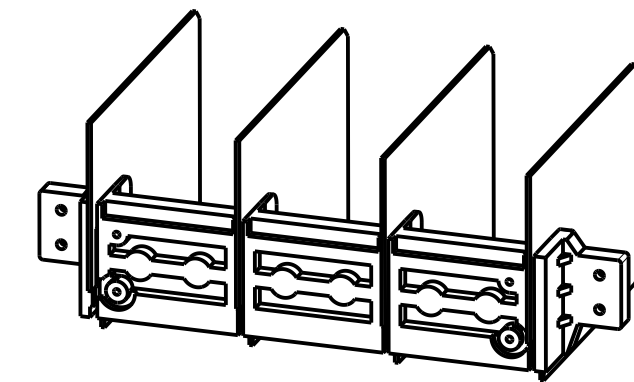
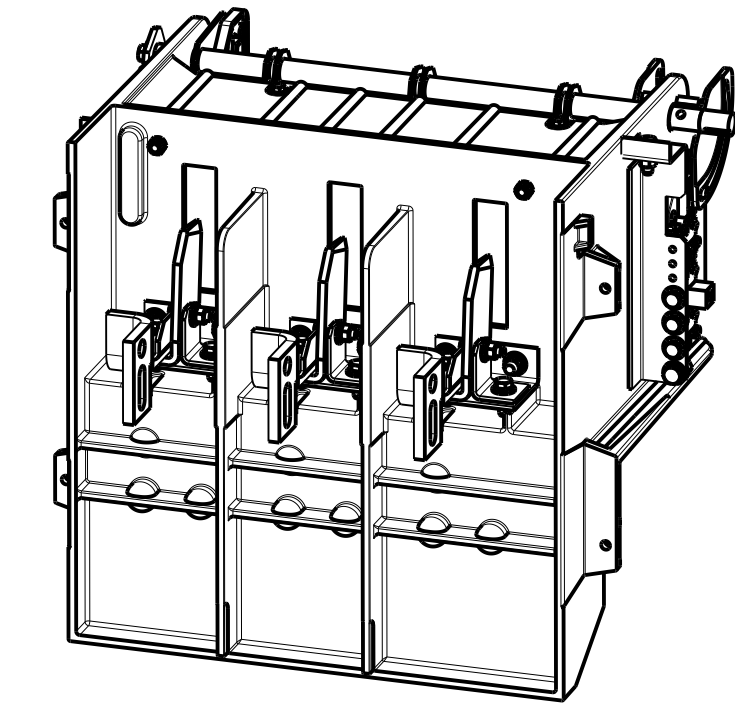
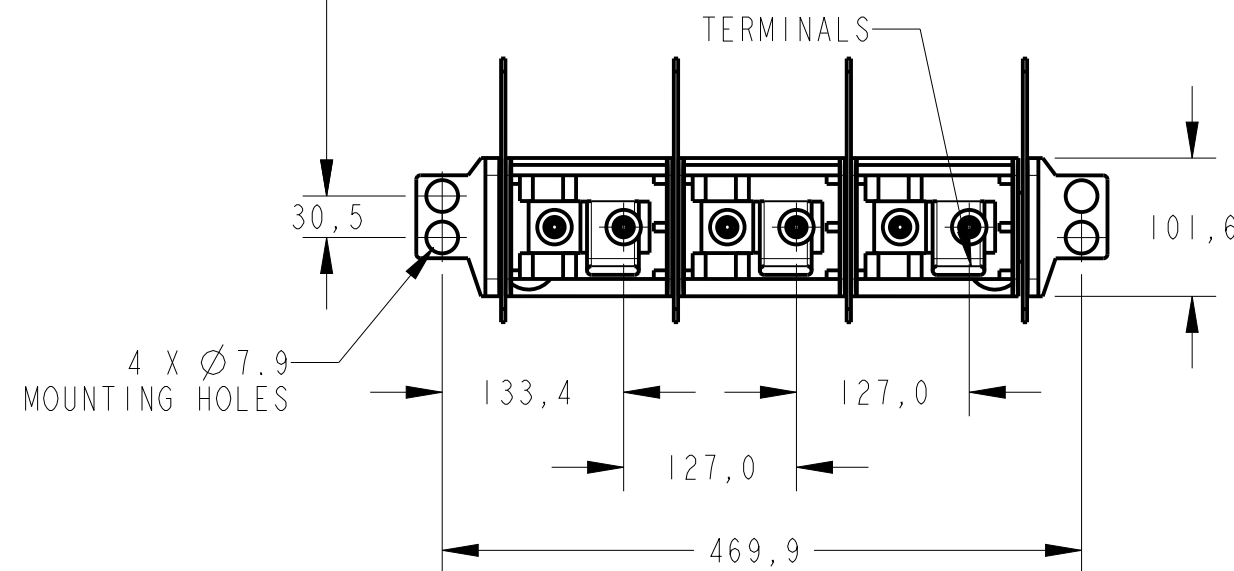
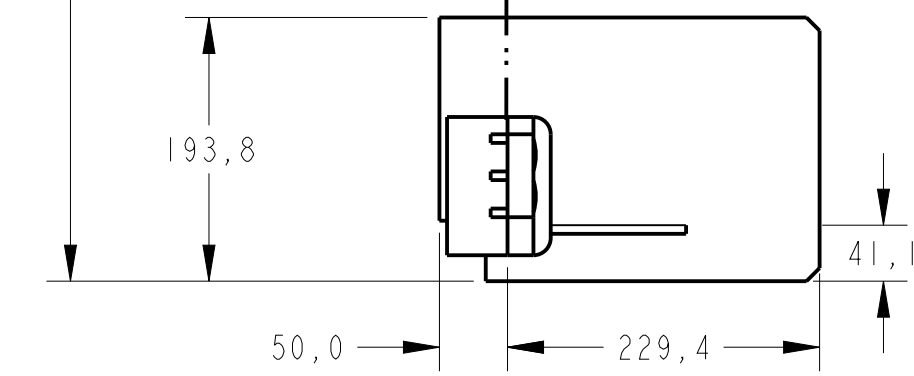
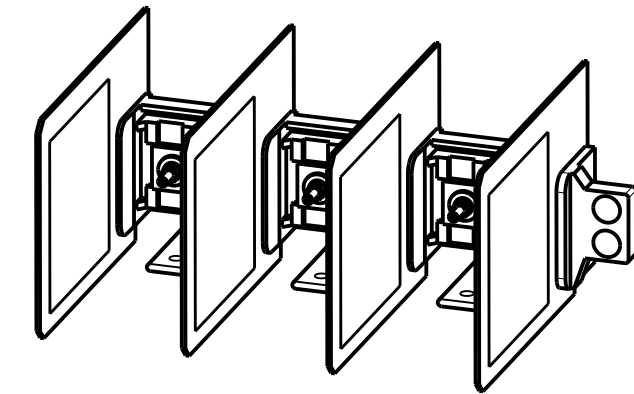
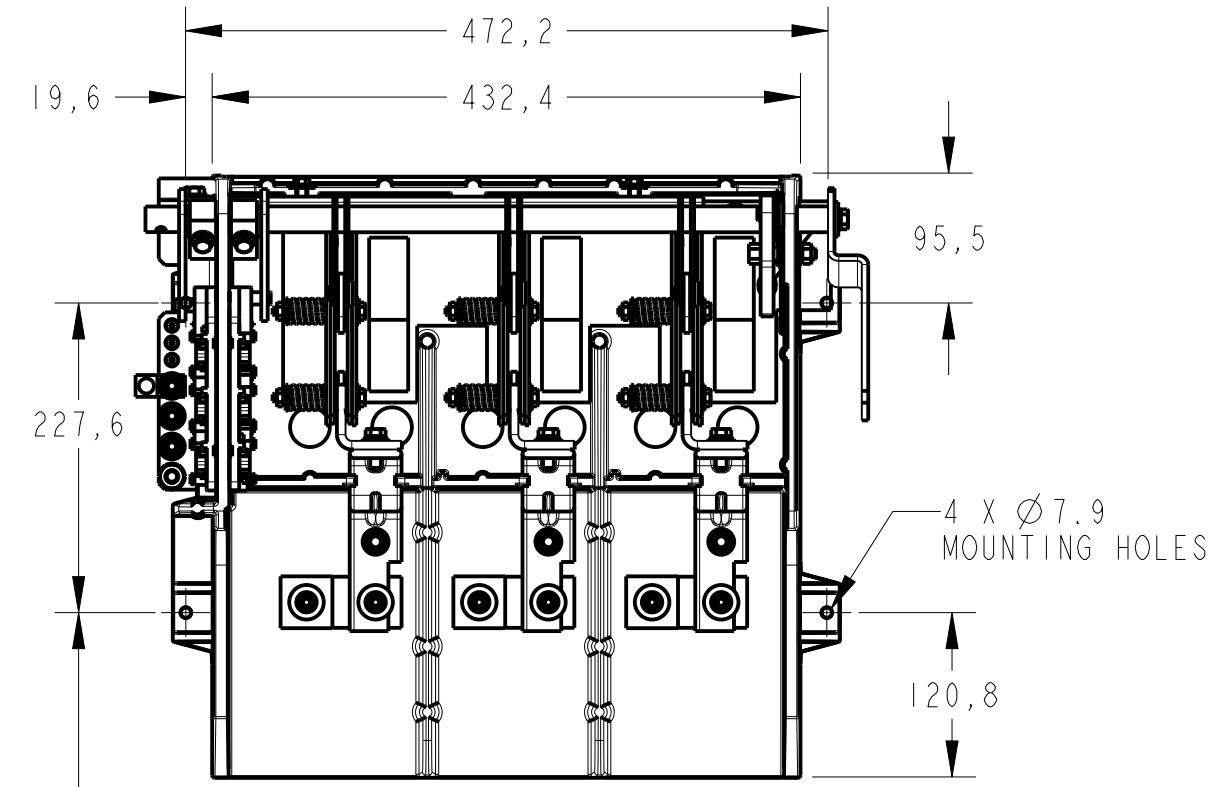
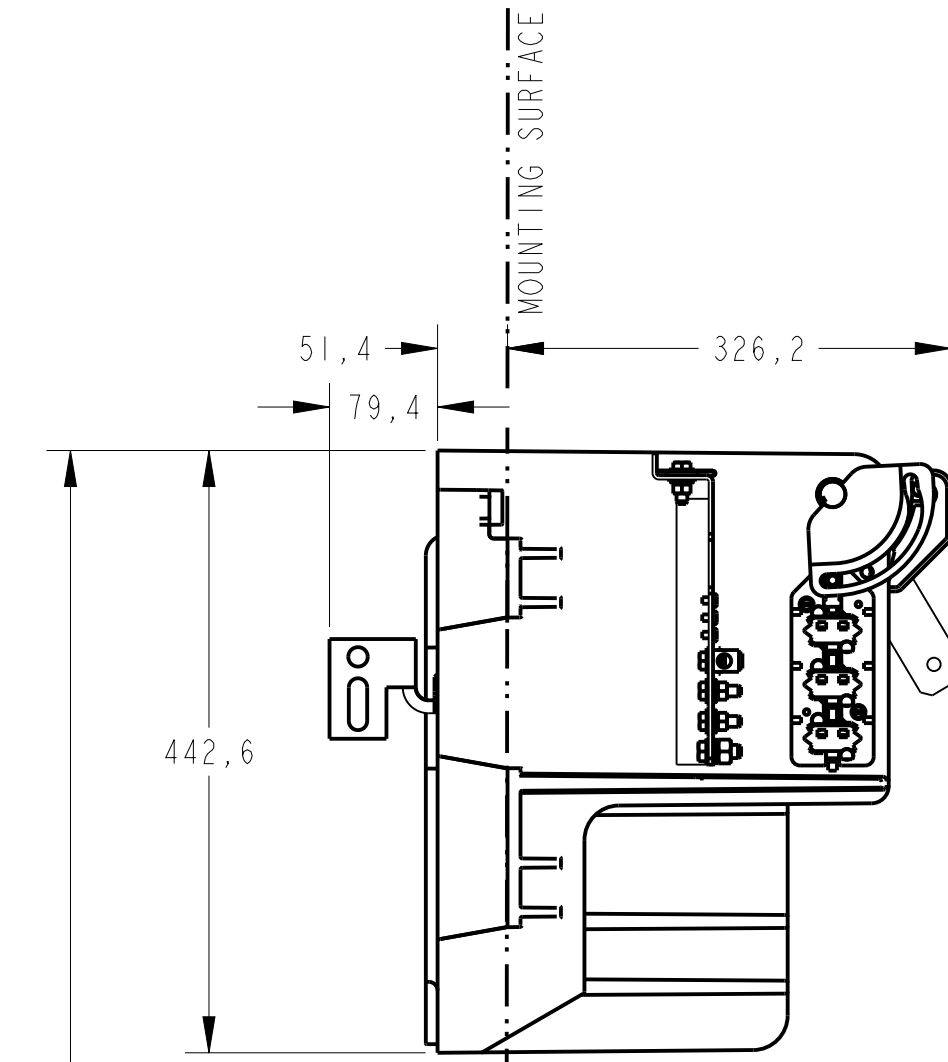
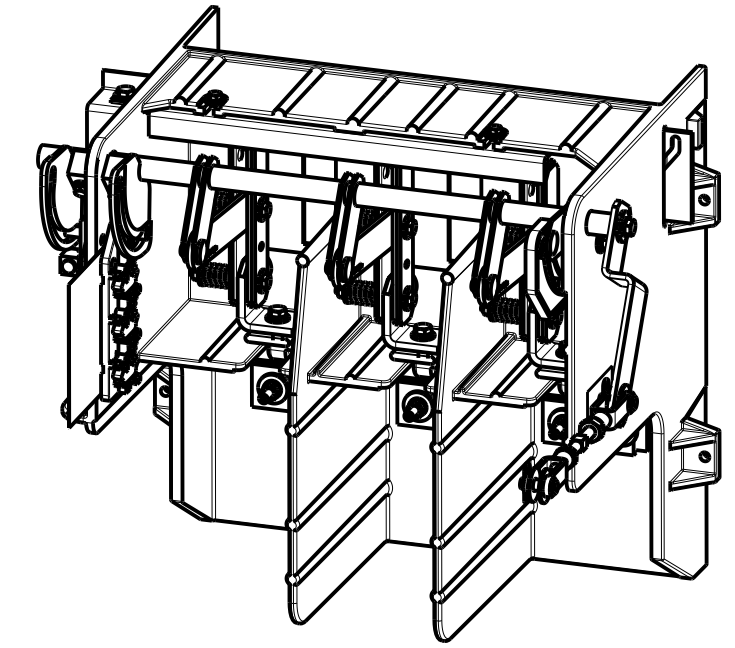
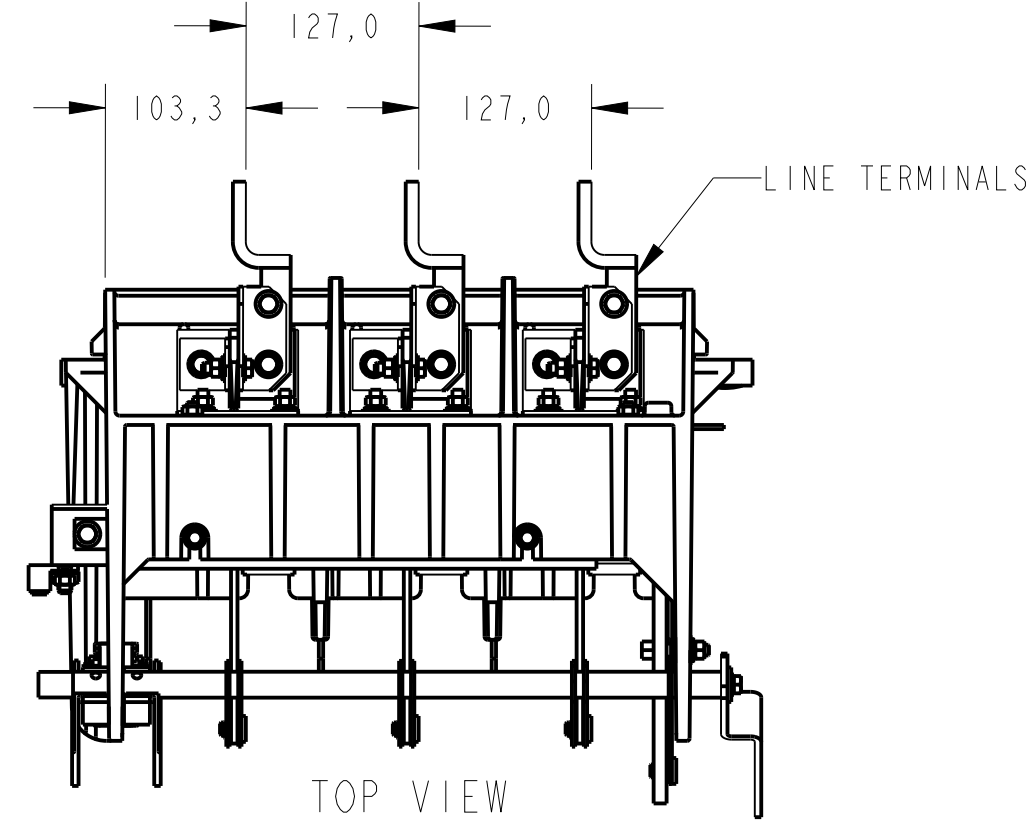
OVERALL DIMENSIONS

WIDTH: 490.0
HEIGHT: 818.0
DEPTH: 387.0
WEIGHT: 30kg

CRITICAL TO QUALITY CLASSIFICATION TABLE

P=PERFORMANCE, F=FIT, A=ASSEMBLY
X=IDENTIFIES APPLICABLE CLASSIFICATION(S)
◇=ENGINEERING AND/OR MANUFACTURING REQUIREMENT
Ⓢ=REGULATORY REQUIREMENT-CONFORMANCE IS MANDATORY

COMMENTS	DRAWING ZONE	P	F	A	R
ROHS	G1-H1				X



MUST COMPLY WITH ROCKWELL
AUTOMATION ENVIRONMENTAL
SPECIFICATION 970-20-01

DIMENSION UNITS - mm

UNLESS SPECIFIED THE FOLLOWING TOLERANCES APPLY (ISO/DIN MEDIUM).

.X:±	0.8
.XX:±	0.30
ANG:±	1°

ALL UNDIMENSIONED GEOMETRIES ARE CONTROLLED BY THE CAD MODEL. IN CASE OF DIMENSION DISCREPANCY, CAD MODEL OVERRIDES.

THIRD ANGLE PROJECTION

Rockwell Automation

DESCRIPTION: 1500,400A ISOLATING SWITCH C/W FUSE SUPT
DIMENSION DRAWING

CREATED BY: T. EINWECHTER CHANGED BY: PAUL VAN HEESWYK

CONFIDENTIAL AND PROPRIETARY INFORMATION. THIS DOCUMENT CONTAINS CONFIDENTIAL AND PROPRIETARY INFORMATION OF ROCKWELL AUTOMATION, INC. AND MAY NOT BE USED, COPIED OR DISCLOSED TO OTHERS, EXCEPT WITH THE AUTHORIZED WRITTEN PERMISSION OF ROCKWELL AUTOMATION, INC.

DATE: 1997-08-06	SHEET 2 OF 2
SIZE DIR	VER
C 80158-164	10