

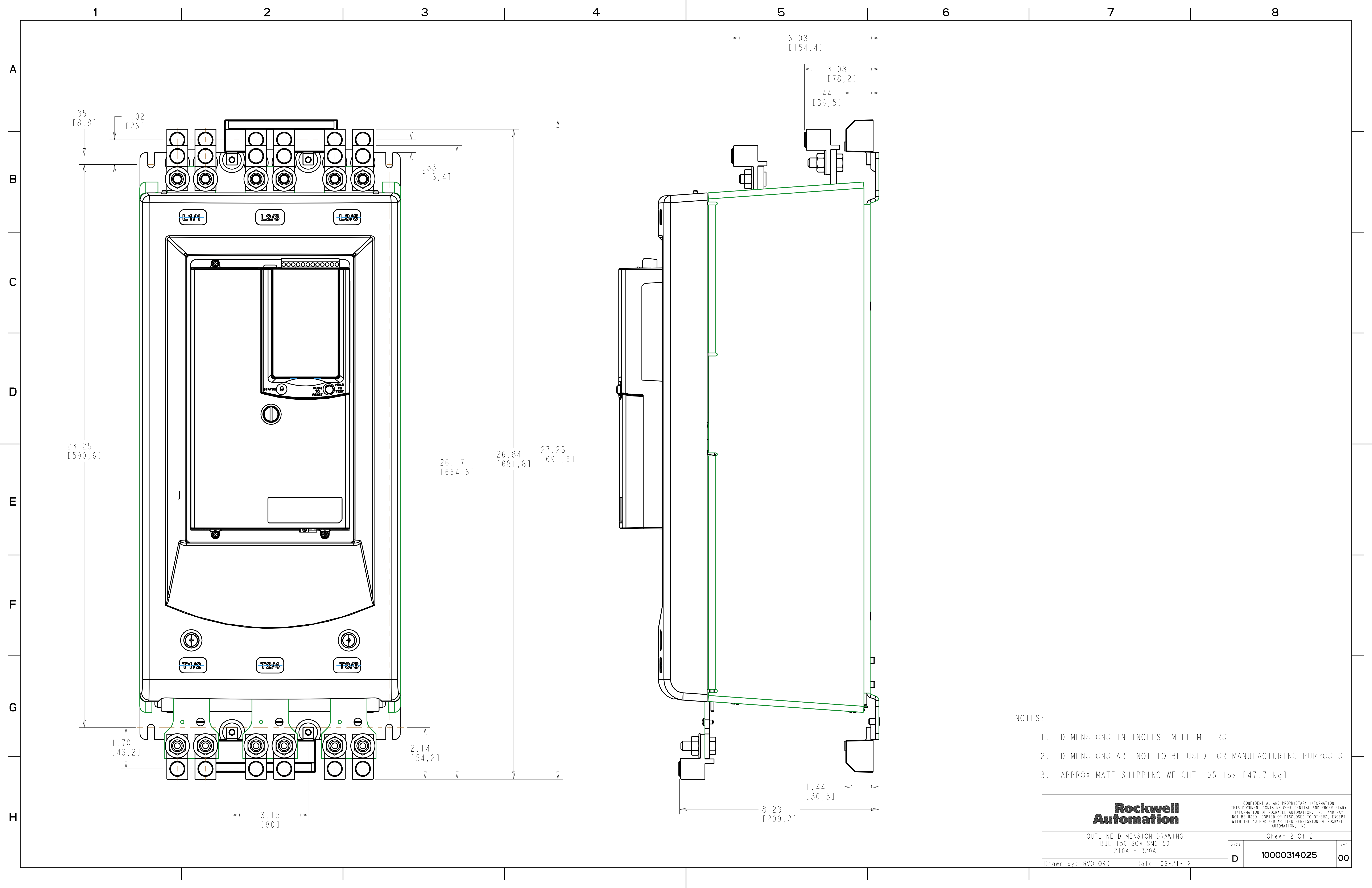
DETAIL A  
SCALE 1:200

23.25 [590,6] 24.24 [615,7] 25.14 [638,5]

NOTES:

1. DIMENSIONS IN INCHES [MILLIMETERS].
2. DIMENSIONS ARE NOT TO BE USED FOR MANUFACTURING PURPOSES.
3. APPROXIMATE SHIPPING WEIGHT 105 lbs [47.7 kg]

<b>Rockwell Automation</b> OUTLINE DIMENSION DRAWING BUL 150 SC* SMC 50 210A - 320A		CONFIDENTIAL AND PROPRIETARY INFORMATION THIS DOCUMENT CONTAINS CONFIDENTIAL AND PROPRIETARY INFORMATION OF ROCKWELL AUTOMATION, INC. AND MAY NOT BE USED, COPIED OR DISCLOSED TO OTHERS, EXCEPT WITH THE AUTHORIZED WRITTEN PERMISSION OF ROCKWELL AUTOMATION, INC.	
		Sheet 1 Of 2	Size <b>D</b>
Drawn by: GVOBORS	Date: 09-21-12	<b>10000314025</b>	



.35  
[8,8]      1.02  
[26]

.53  
[13,4]

23.25  
[590,6]

26.17  
[664,6]

26.84  
[681,8]

27.23  
[691,6]

6.08  
[154,4]

3.08  
[78,2]

1.44  
[36,5]

1.70  
[43,2]

2.14  
[54,2]

3.15  
[80]

8.23  
[209,2]

1.44  
[36,5]

NOTES:

1. DIMENSIONS IN INCHES [MILLIMETERS].
2. DIMENSIONS ARE NOT TO BE USED FOR MANUFACTURING PURPOSES.
3. APPROXIMATE SHIPPING WEIGHT 105 lbs [47.7 kg]

<b>Rockwell Automation</b>		CONFIDENTIAL AND PROPRIETARY INFORMATION. THIS DOCUMENT CONTAINS CONFIDENTIAL AND PROPRIETARY INFORMATION OF ROCKWELL AUTOMATION, INC. AND MAY NOT BE USED, COPIED OR DISCLOSED TO OTHERS, EXCEPT WITH THE AUTHORIZED WRITTEN PERMISSION OF ROCKWELL AUTOMATION, INC.	
OUTLINE DIMENSION DRAWING BUL 150 SC* SMC 50 210A - 320A		Sheet 2 Of 2	
Drawn by: GVOBORS	Date: 09-21-12	Size <b>D</b>	Ver <b>00</b>
		<b>10000314025</b>	