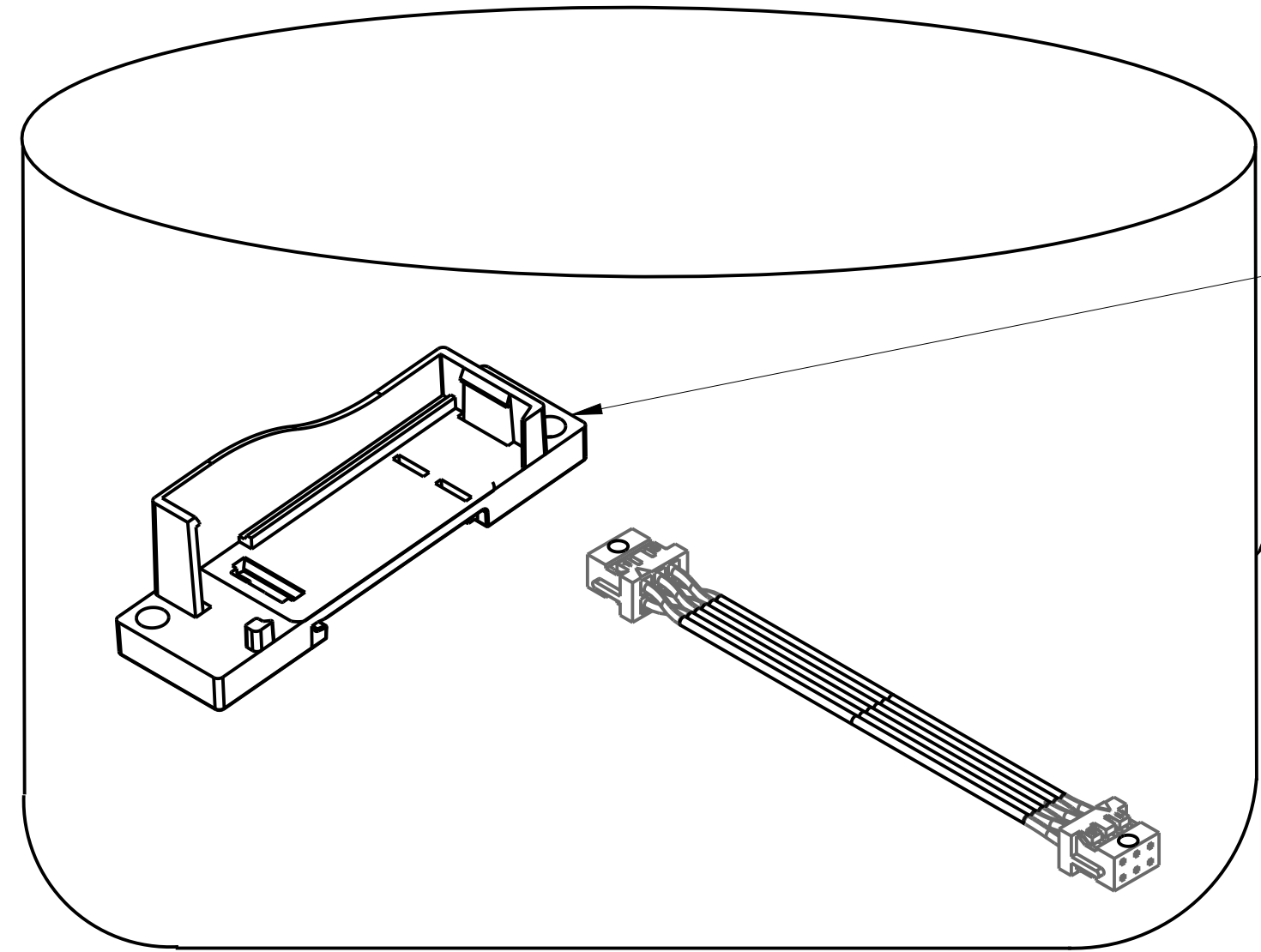


CRITICAL TO QUALITY CLASSIFICATION TABLE					
P=PERFORMANCE, F=FIT, A=ASSEMBLY					
X=IDENTIFIES APPLICABLE CLASSIFICATION(S)					
⊕ENGINEERING AND/OR MANUFACTURING REQUIREMENT					
⊗REGULATORY REQUIREMENT-CONFORMANCE IS MANDATORY					
COMMENTS	DRAWING ZONE	P	F	A	R
ROHS	G1-H1				X



SEE BOM FOR HARDWARE PART NUMBERS

PLASTIC BAG
(TO BE SEALED AFTER INSERTING SHOWN ITEMS)
SEE SHEET 5 FOR BAG LABEL INFORMATION

DETAIL A
193-1E1KIT1
HARDWARE KIT
PN-506135

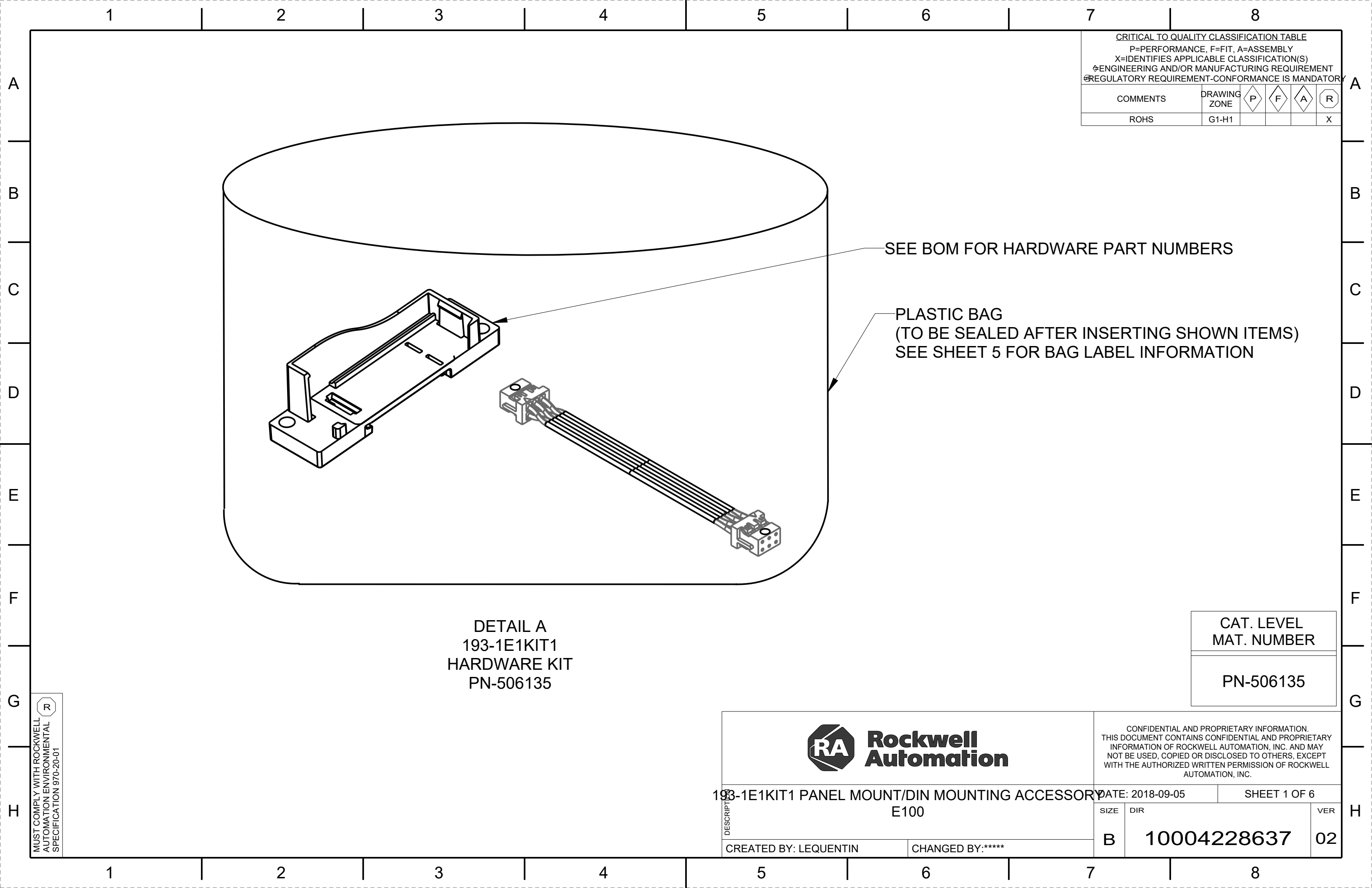
CAT. LEVEL MAT. NUMBER
PN-506135



CONFIDENTIAL AND PROPRIETARY INFORMATION.
THIS DOCUMENT CONTAINS CONFIDENTIAL AND PROPRIETARY
INFORMATION OF ROCKWELL AUTOMATION, INC. AND MAY
NOT BE USED, COPIED OR DISCLOSED TO OTHERS, EXCEPT
WITH THE AUTHORIZED WRITTEN PERMISSION OF ROCKWELL
AUTOMATION, INC.

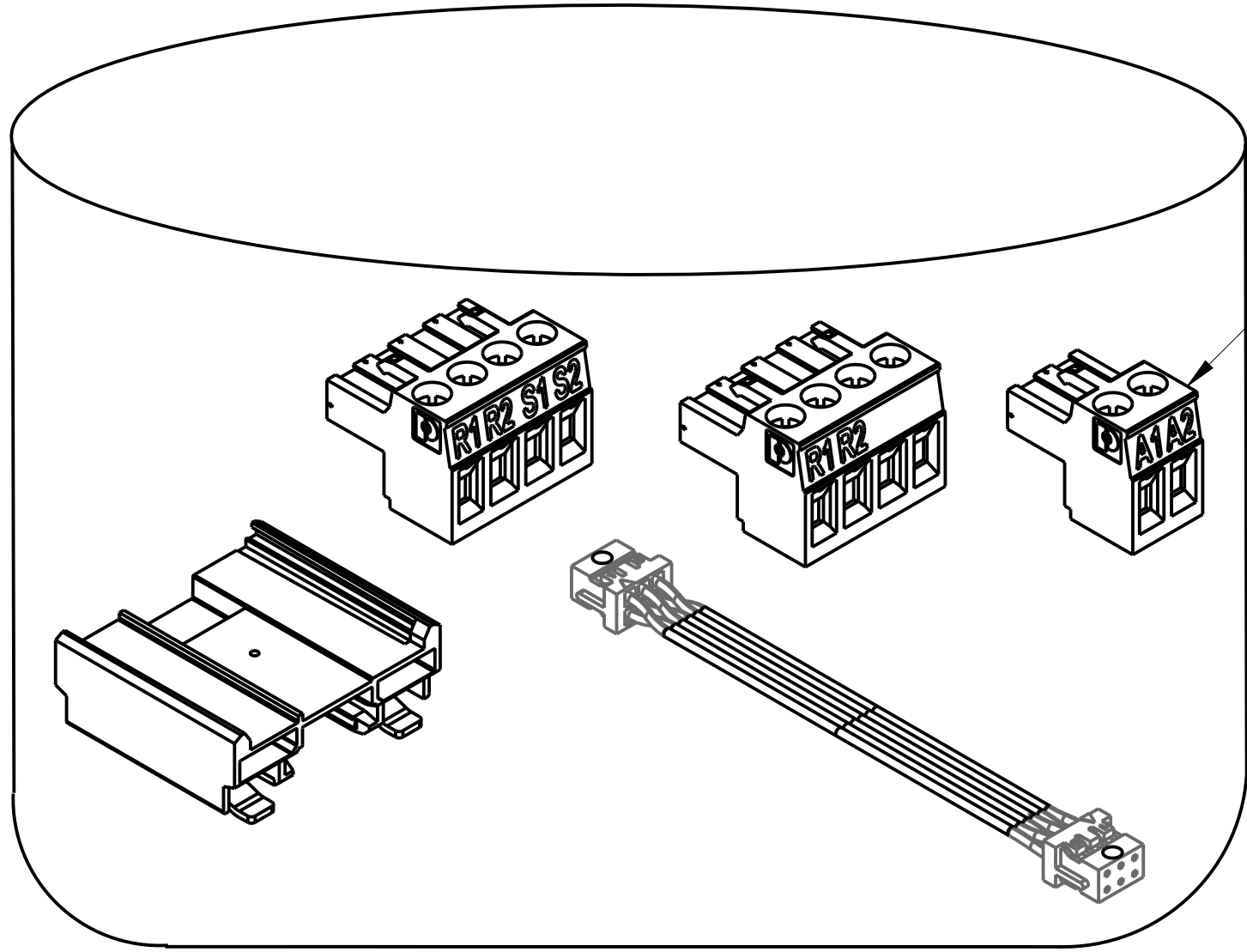
193-1E1KIT1 PANEL MOUNT/DIN MOUNTING ACCESSORY		DATE: 2018-09-05	SHEET 1 OF 6	
DESCRIPTION	E100	SIZE	DIR	VER
CREATED BY: LEQUENTIN	CHANGED BY:*****	B	10004228637	02

MUST COMPLY WITH ROCKWELL
AUTOMATION ENVIRONMENTAL
SPECIFICATION 970-20-01



1 2 3 4 5 6 7 8

A
B
C
D
E
F
G
H



SEE BOM FOR HARDWARE PART NUMBERS

PLASTIC BAG
(TO BE SEALED AFTER INSERTING SHOWN ITEMS)
SEE SHEET 5 FOR BAG LABEL INFORMATION

DETAIL B
193-1E1KIT2
HARDWARE KIT
PN-506136

CAT. LEVEL MAT. NUMBER
PN-506136



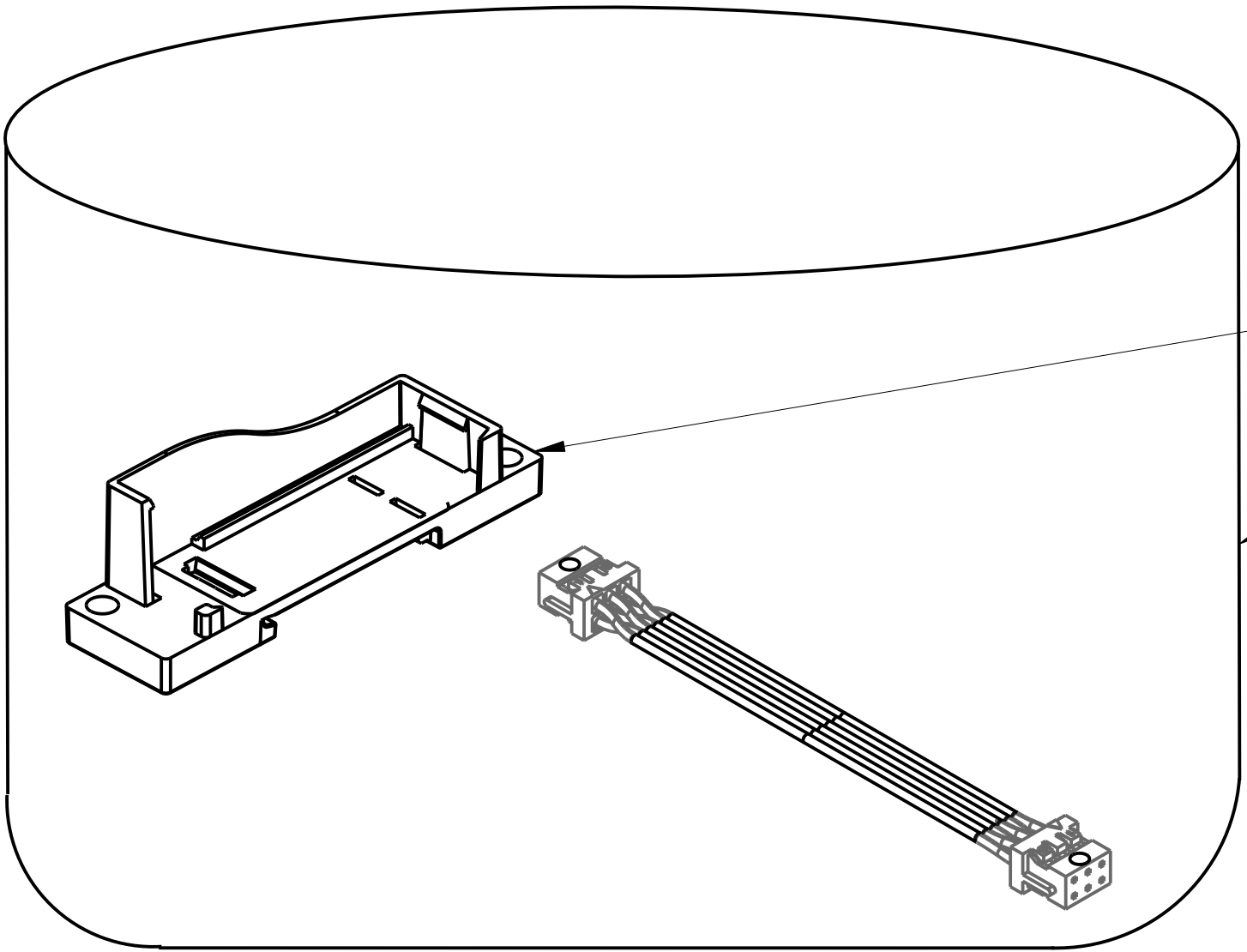
CONFIDENTIAL AND PROPRIETARY INFORMATION.
THIS DOCUMENT CONTAINS CONFIDENTIAL AND PROPRIETARY
INFORMATION OF ROCKWELL AUTOMATION, INC. AND MAY
NOT BE USED, COPIED OR DISCLOSED TO OTHERS, EXCEPT
WITH THE AUTHORIZED WRITTEN PERMISSION OF ROCKWELL
AUTOMATION, INC.

DESCRIPTION	193-1E1KIT2 INSTALLATION KIT ACCESSORY E100		DATE: 2018-09-05	SHEET 2 OF 6
	CREATED BY: LEQUENTIN	CHANGED BY:*****	SIZE B	DIR 10004228637

1 2 3 4 5 6 7 8

1 2 3 4 5 6 7 8

A
B
C
D
E
F
G
H



SEE BOM FOR HARDWARE PART NUMBERS

PLASTIC BAG
(TO BE SEALED AFTER INSERTING SHOWN ITEMS)
SEE SHEET 5 FOR BAG LABEL INFORMATION

DETAIL C
CEP7-1E1KIT1
HARDWARE KIT
PN-506138

CAT. LEVEL MAT. NUMBER
PN-506138



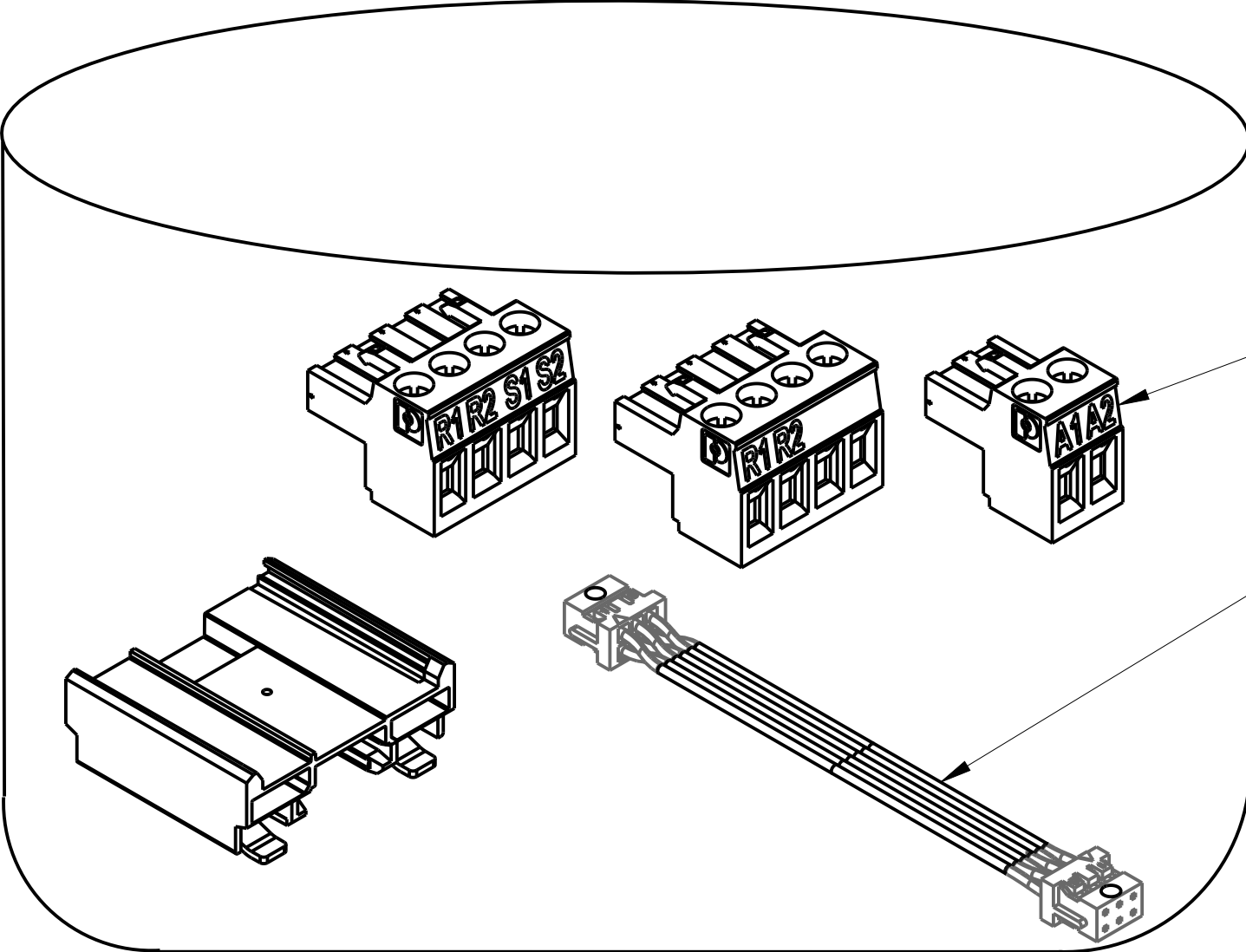
CONFIDENTIAL AND PROPRIETARY INFORMATION.
THIS DOCUMENT CONTAINS CONFIDENTIAL AND PROPRIETARY
INFORMATION OF ROCKWELL AUTOMATION, INC. AND MAY
NOT BE USED, COPIED OR DISCLOSED TO OTHERS, EXCEPT
WITH THE AUTHORIZED WRITTEN PERMISSION OF ROCKWELL
AUTOMATION, INC.

DESCRIPTION	CEP7-1E1KIT1 PANEL MOUNT/DIN MOUNTING ACCESSORY		DATE:2018-09-05	SHEET 3 OF 6	
	CREATED BY:LEQUENTI	CHANGED BY:*****	SIZE B	DIR 10004228637	VER 02

1 2 3 4 5 6 7 8

1 2 3 4 5 6 7 8

A
B
C
D
E
F
G
H



SEE BOM FOR HARDWARE PART NUMBERS

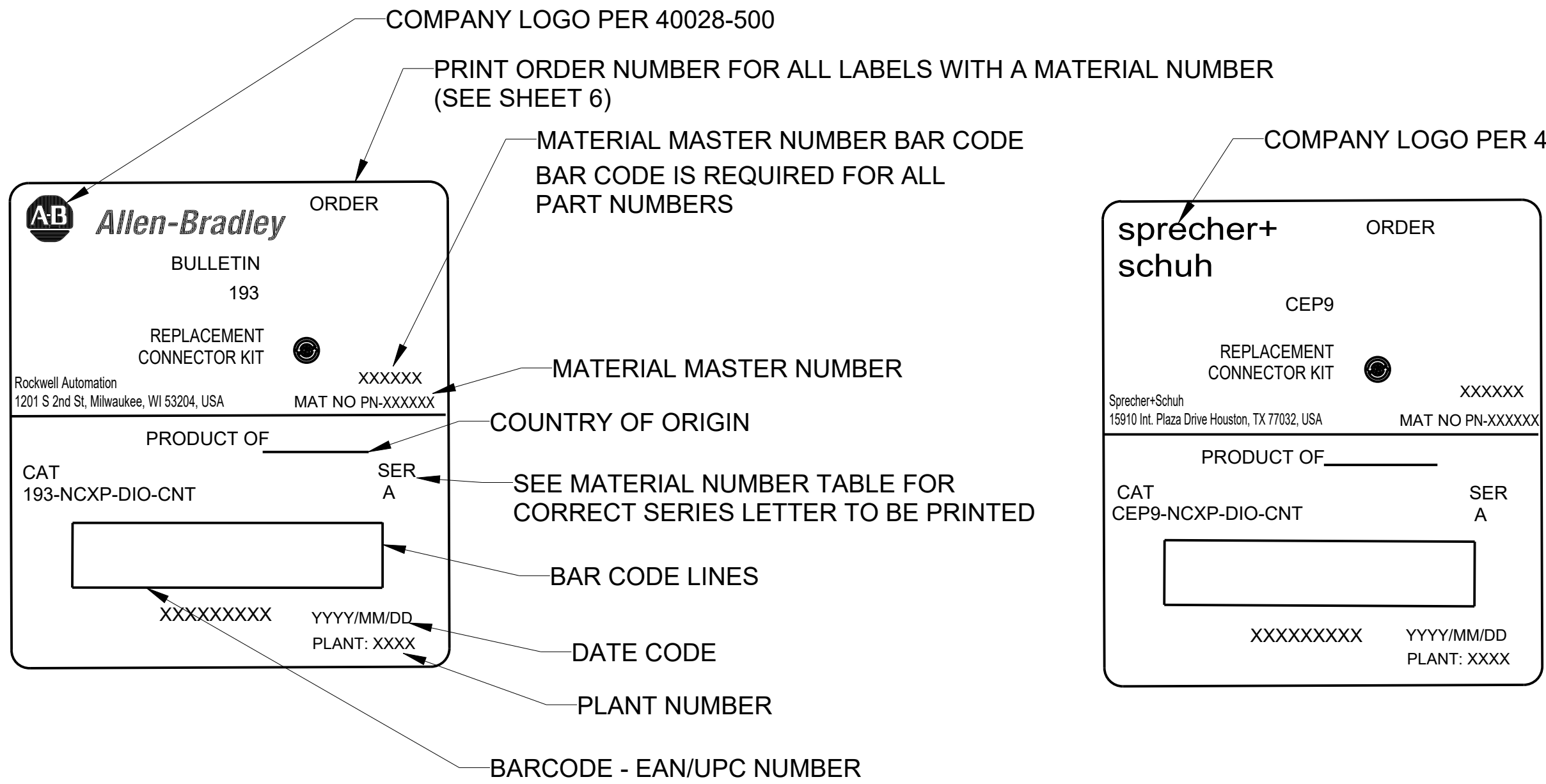
PLASTIC BAG
(TO BE SEALED AFTER INSERTING SHOWN ITEMS)
SEE SHEET 5 FOR BAG LABEL INFORMATION

DETAIL D
CEP7-1E1KIT2
HARDWARE KIT
PN-506139

CAT. LEVEL MAT. NUMBER
PN-506139

		<small>CONFIDENTIAL AND PROPRIETARY INFORMATION. THIS DOCUMENT CONTAINS CONFIDENTIAL AND PROPRIETARY INFORMATION OF ROCKWELL AUTOMATION, INC. AND MAY NOT BE USED, COPIED OR DISCLOSED TO OTHERS, EXCEPT WITH THE AUTHORIZED WRITTEN PERMISSION OF ROCKWELL AUTOMATION, INC.</small>				
		DATE:2019-09-05		SHEET 4 OF 6		
DESCRIPTION	CEP7-1E1KIT2 INSTALLATION KIT ACCESSORY		SIZE	DIR	VER	
	CREATED BY:LEQUENTI		CHANGED BY:*****		B	10004228637

1 2 3 4 5 6 7 8



GENERAL NOTES:

- 1) BAG IS TO BE PRINTED WITH BLACK TEXT.
- 2) GPM TEMPLATE G202XABL.


		<small>CONFIDENTIAL AND PROPRIETARY INFORMATION. THIS DOCUMENT CONTAINS CONFIDENTIAL AND PROPRIETARY INFORMATION OF ROCKWELL AUTOMATION, INC. AND MAY NOT BE USED, COPIED OR DISCLOSED TO OTHERS, EXCEPT WITH THE AUTHORIZED WRITTEN PERMISSION OF ROCKWELL AUTOMATION, INC.</small>		
DESCRIPTION	193 E100 E1KIT1 AND E1KIT2 GPM BAG LABEL INFORMATION		DATE: 2019-09-05	SHEET 5 OF 6
	CREATED BY: LEQUENTI	CHANGED BY: *****	SIZE: B DIR: 10004228637	VER: 02

1 2 3 4 5 6 7 8

MATERIAL NUMBER	BAGGED KIT CATALOG NUMBER:	SERIES LETTER	PER DETAIL:	COMPANY LOGO:	USED FOR:	SHEET:
PN-506135	193-1E1KIT1	A	A	ALLEN-BRADLEY	E100 Panel/DIN Mounting Kit	1
PN-506136	193-1E1KIT2	A	B	ALLEN-BRADLEY	E100 Installation Kit	2
PN-506138	CEP7-1E1KIT1	A	C	SPRECHER+SCHUH	CEP7 Panel/DIN Mounting Kit	3
PN-506139	CEP7-1E1KIT2	A	D	SPRECHER+SCHUH	CEP7 Installation Kit	4

A
B
C
D
E
F
G
H

A
B
C
D
E
F
G
H

		<small>CONFIDENTIAL AND PROPRIETARY INFORMATION. THIS DOCUMENT CONTAINS CONFIDENTIAL AND PROPRIETARY INFORMATION OF ROCKWELL AUTOMATION, INC. AND MAY NOT BE USED, COPIED OR DISCLOSED TO OTHERS, EXCEPT WITH THE AUTHORIZED WRITTEN PERMISSION OF ROCKWELL AUTOMATION, INC.</small>		
DESCRIPTION	193 E100 E1KIT1 AND E1KIT2 GPM BAG LABEL INFORMATION		DATE:2019-09-05	SHEET 6 OF 6
	CREATED BY:LEQUENTI	CHANGED BY:*****	SIZE B	DIR 10004228637

1 2 3 4 5 6 7 8