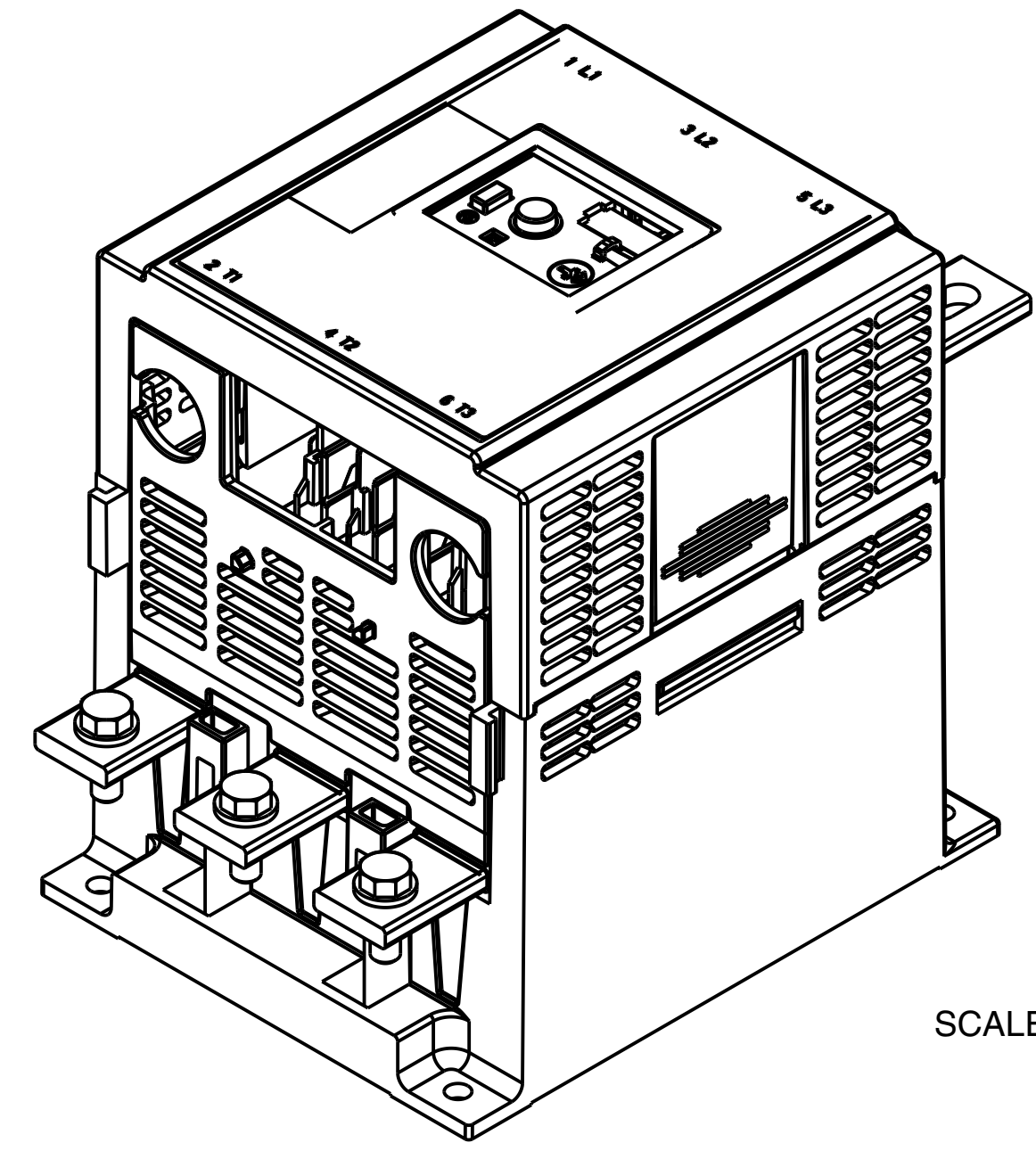
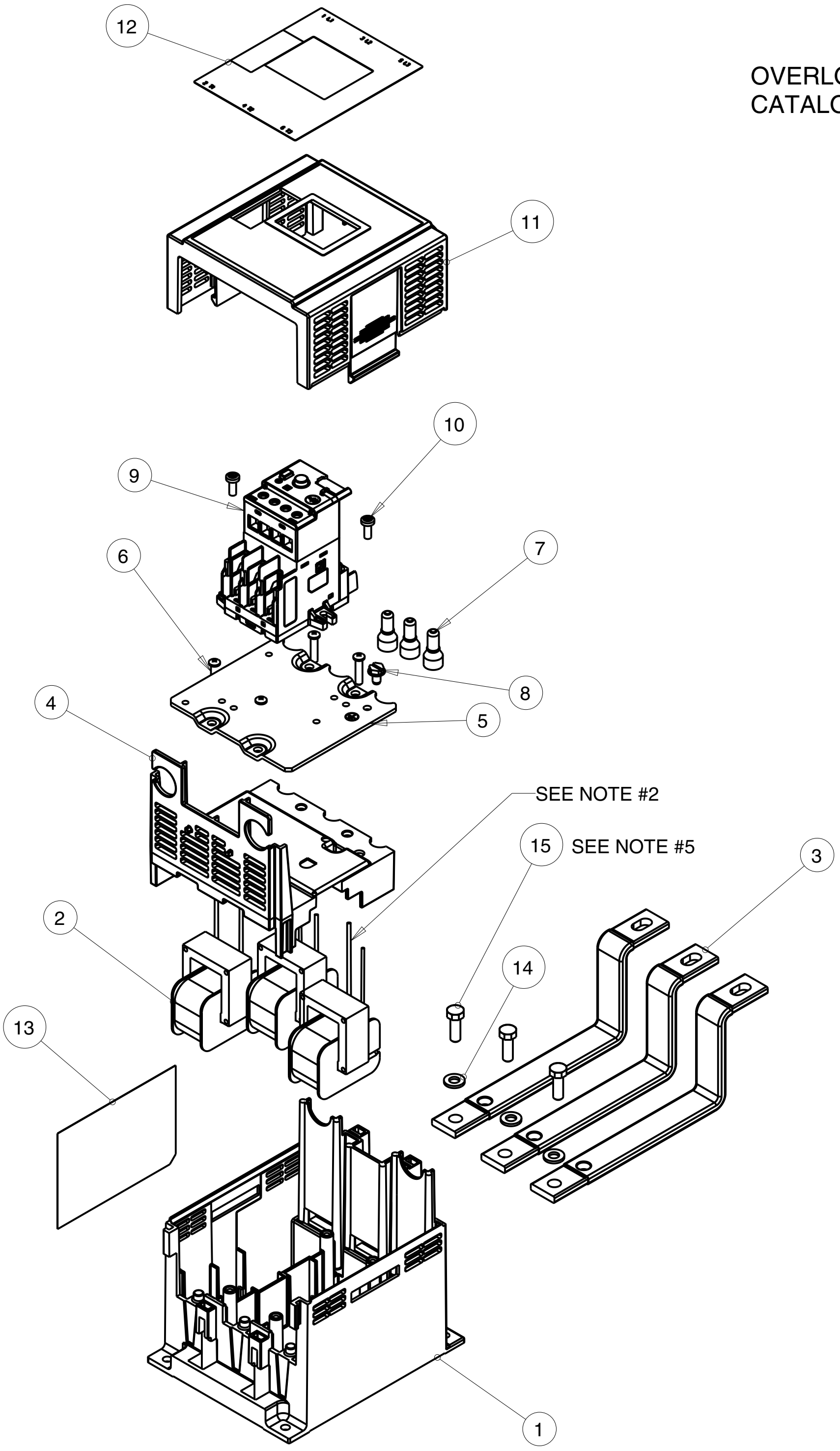


OVERLOAD RELAY ASSEMBLY USED WITH BUL. 100-D\_ CONTACTOR,  
CATALOG NUMBERS 193-EE\_F AND CEP7-EE\_F

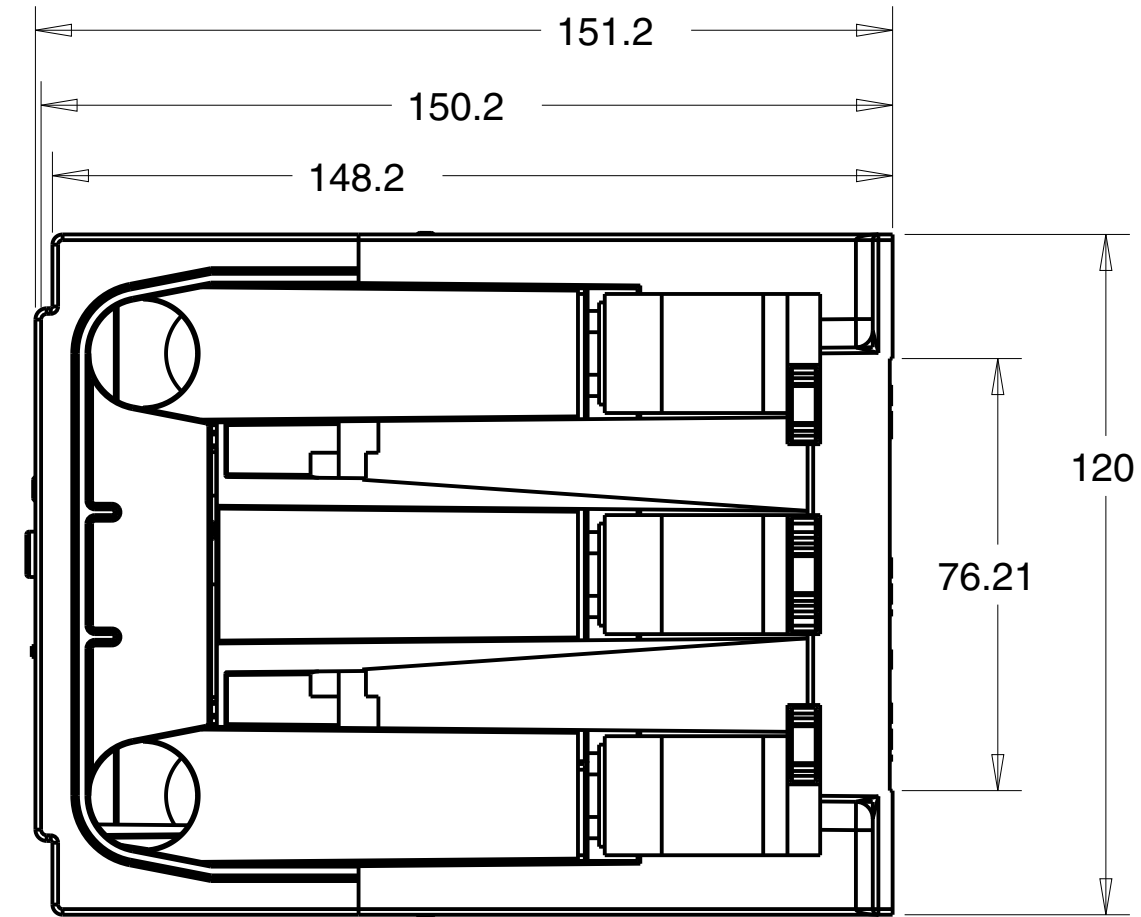
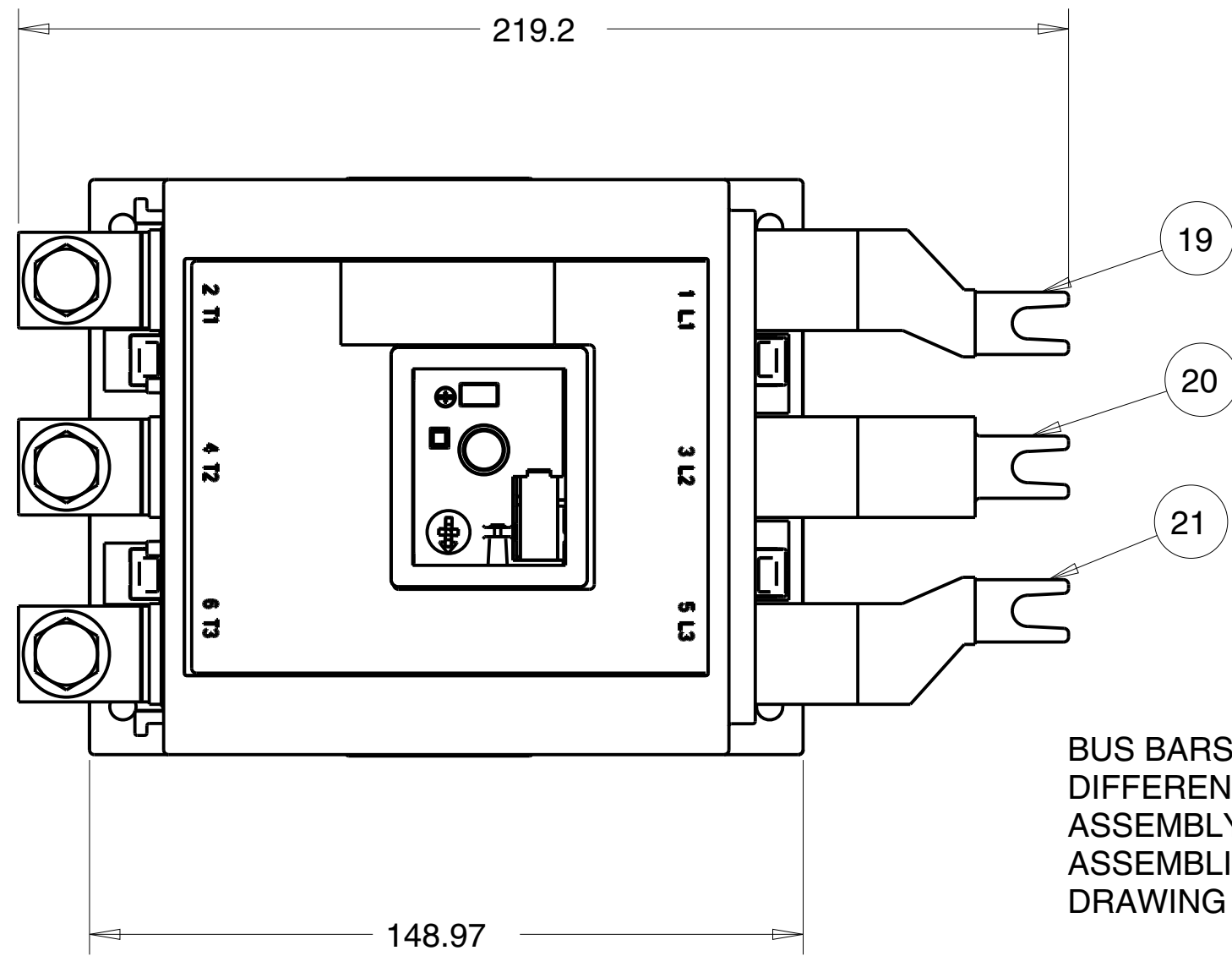


SCALE 0.750

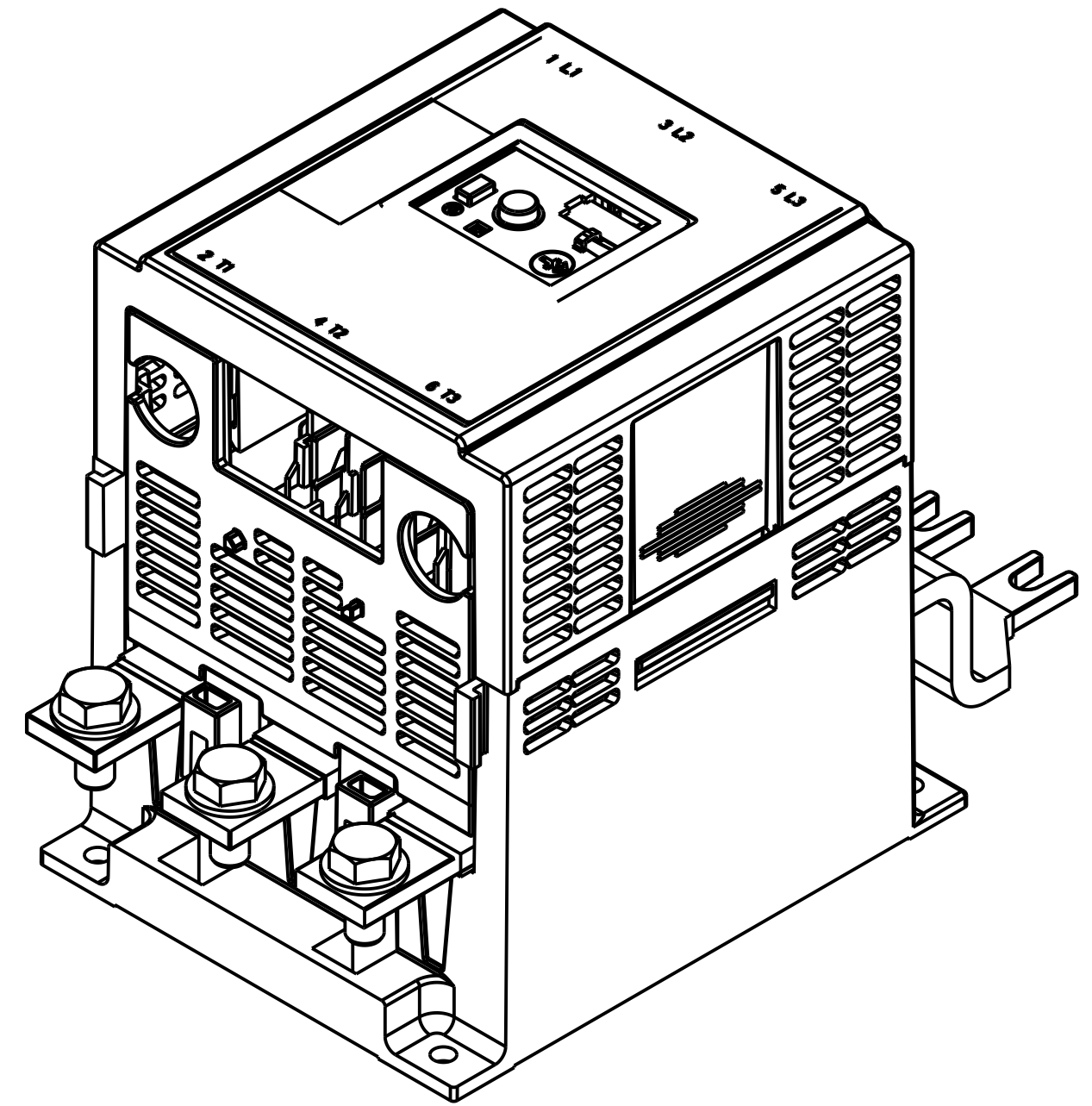
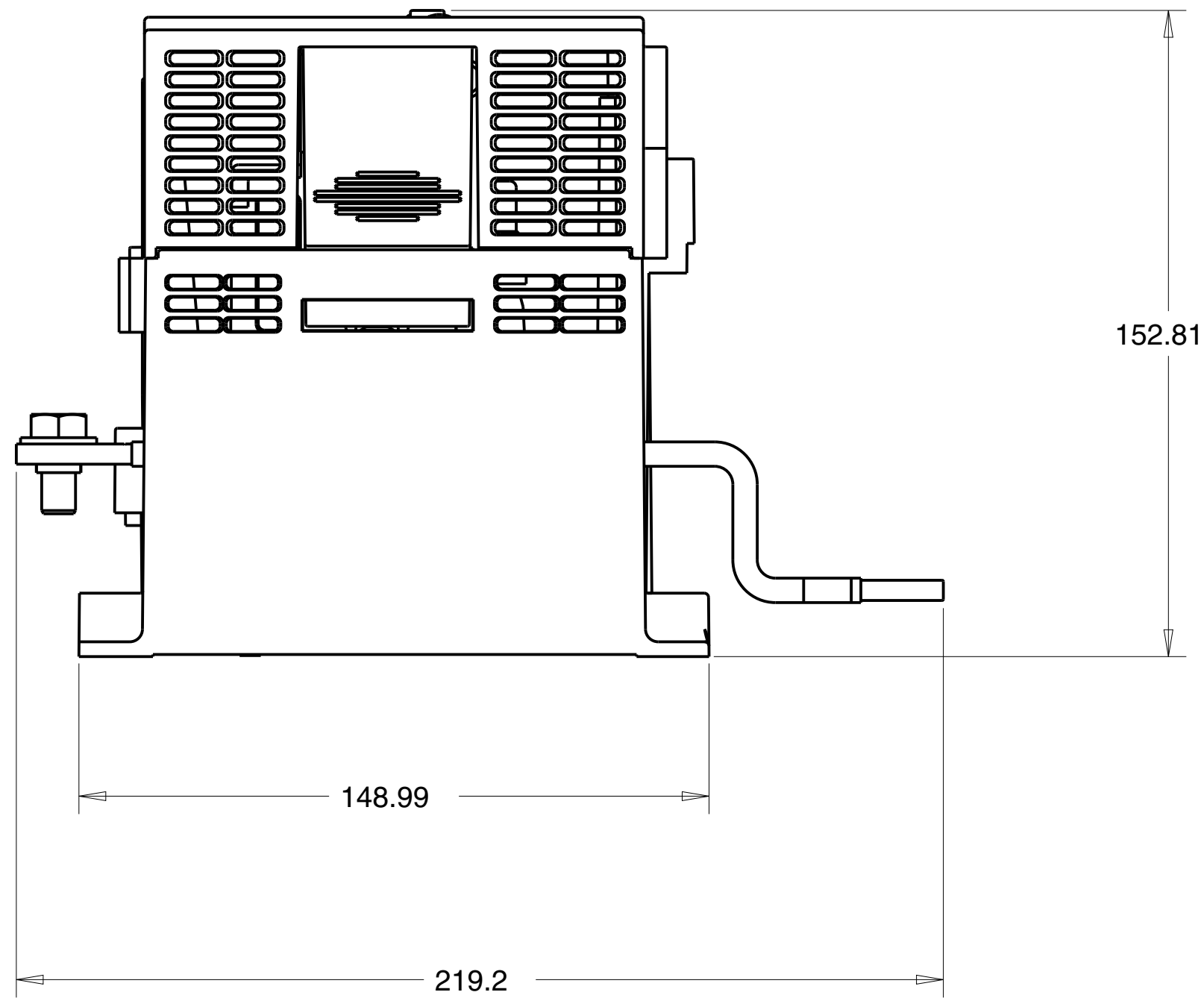
- NOTE :** 1. SCREW TORQUE: ITEM #6 = 10-20 LB-IN.  
ITEM #8 = 25-30 LB-IN.  
ITEM #10 = 16-22 LB-IN.  
ITEM#15 = 13-17 LB-IN
2. THREAD LONGER UNLABELED (FINISH) LEAD THROUGH E1 PLUS OVERLOAD RELAY FOR EACH PHASE AND CRIMP TO THE APPROPRIATE START LEAD (LABELED "S") USING CRIMP CONNECTOR. DO NOT MIX START AND FINISH LEADS BETWEEN PHASES DURING CRIMPING PROCESS.
  3. THERE SHOULD BE NO BARE COPPER WIRE OR STRANDS EXPOSED BEYOND OR OUTSIDE OF CRIMP INSULATION AFTER CRIMPING OPERATION IS COMPLETED.
  4. MARK NAME PLATE (ITEM #13) PER 10000024316.
  5. ASSEMBLE SCREW & WASHER (ITEM #14 & #15) ANYTIME AFTER TERMINALS (ITEM #3) INSERTED THRU XFMR'S (ITEM #2).

<b>Rockwell Automation</b>		CONFIDENTIAL AND PROPRIETARY INFORMATION. THIS DOCUMENT CONTAINS CONFIDENTIAL AND PROPRIETARY INFORMATION OF ROCKWELL AUTOMATION, INC. AND MAY NOT BE USED, COPIED OR DISCLOSED TO OTHERS, EXCEPT WITH THE AUTHORIZED WRITTEN PERMISSION OF ROCKWELL AUTOMATION, INC.	
MCS-E1 PLUS 200A O.L. RELAY		Sheet 1 Of 3	
Drawn by: GLEHMAN	Date: 07-22-08	Size C	Ver 10000026167 02

OVERLOAD RELAY ASSEMBLY USED WITH BUL. 100-E116\_ AND 100-E146\_ CONTACTORS,  
 CATALOG NUMBER 193-EEHJ AND CEP7-EEHJ

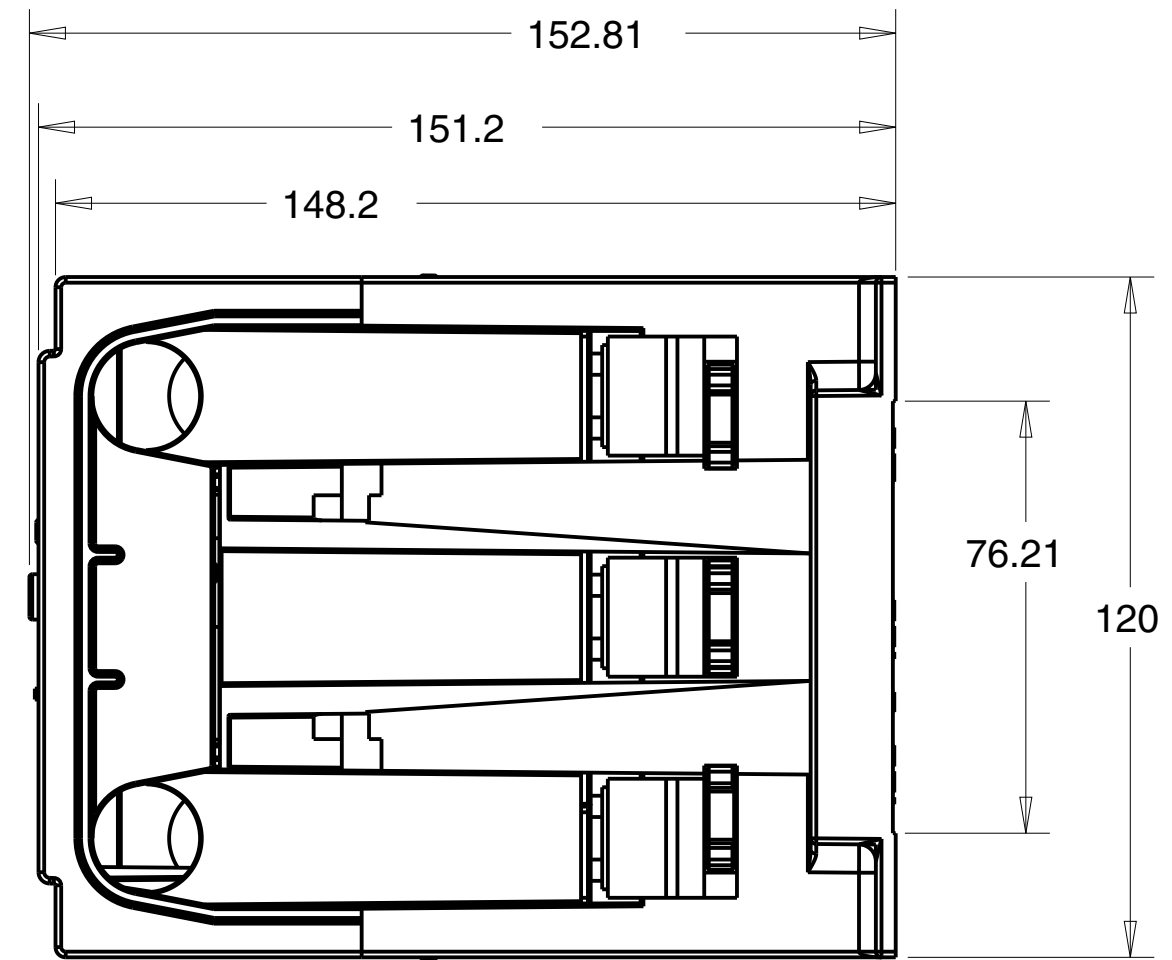
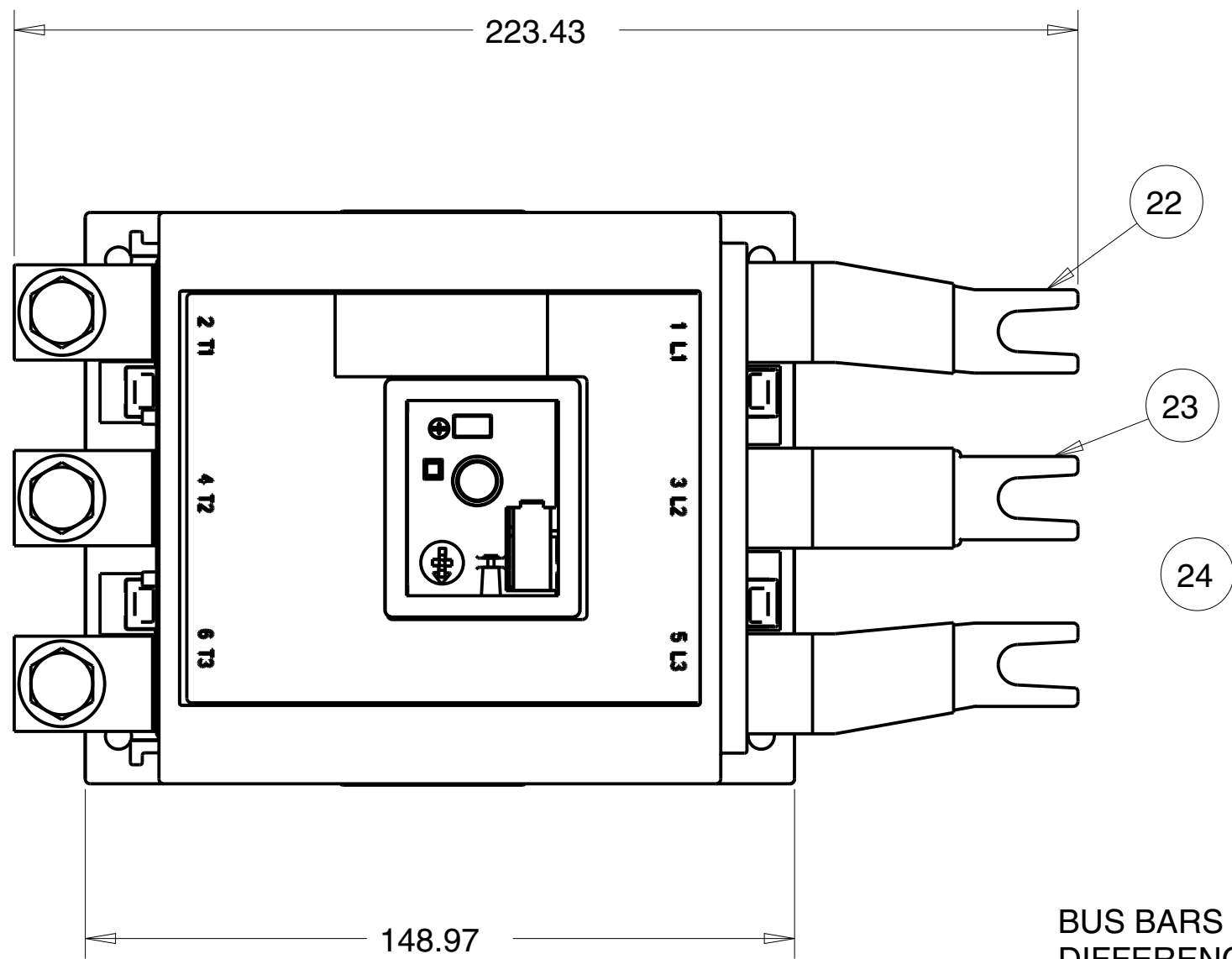


BUS BARS ARE THE ONLY  
 DIFFERENCE IN THIS  
 ASSEMBLY FROM OTHER  
 ASSEMBLIES SHOWN IN THIS  
 DRAWING

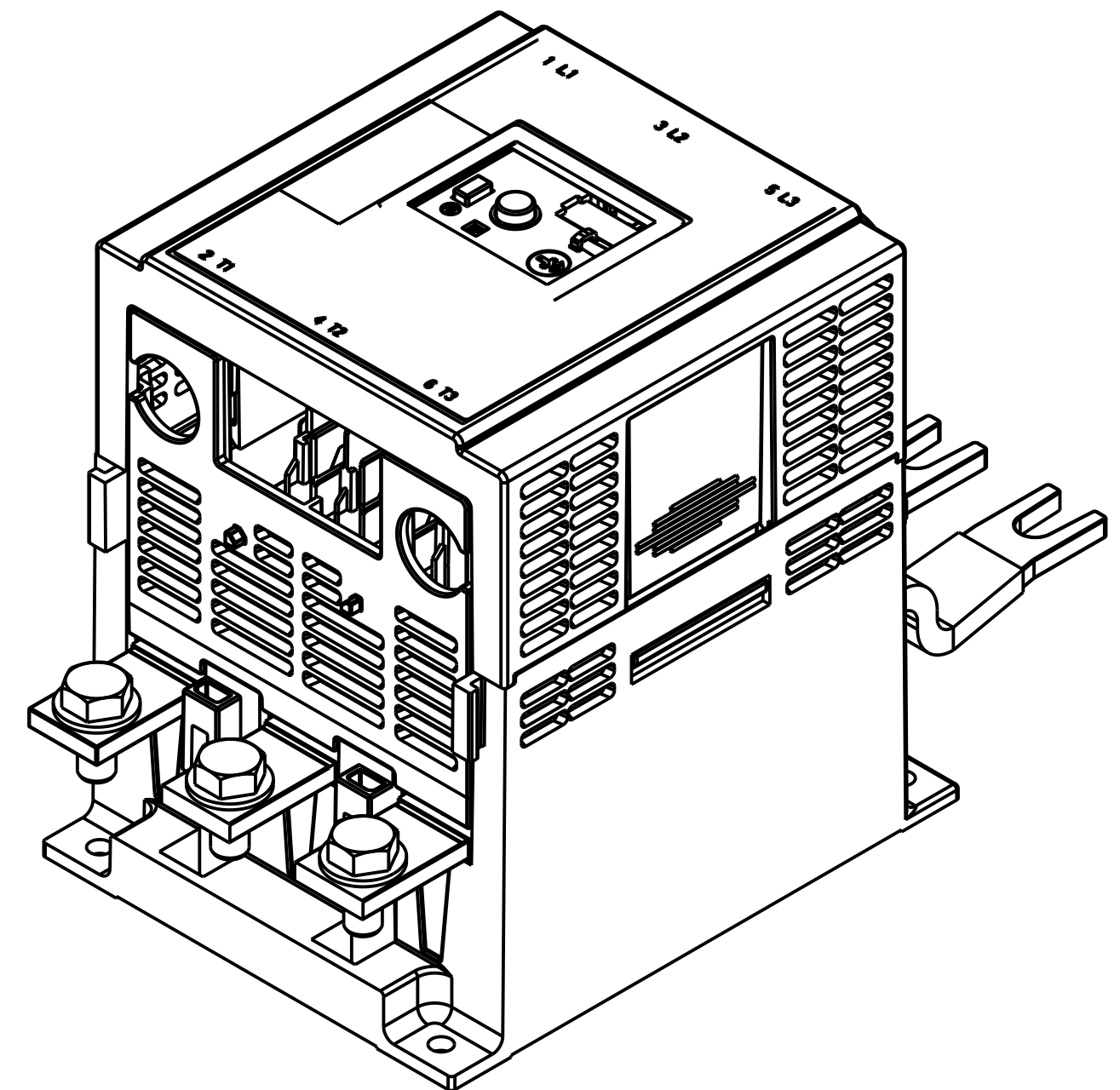
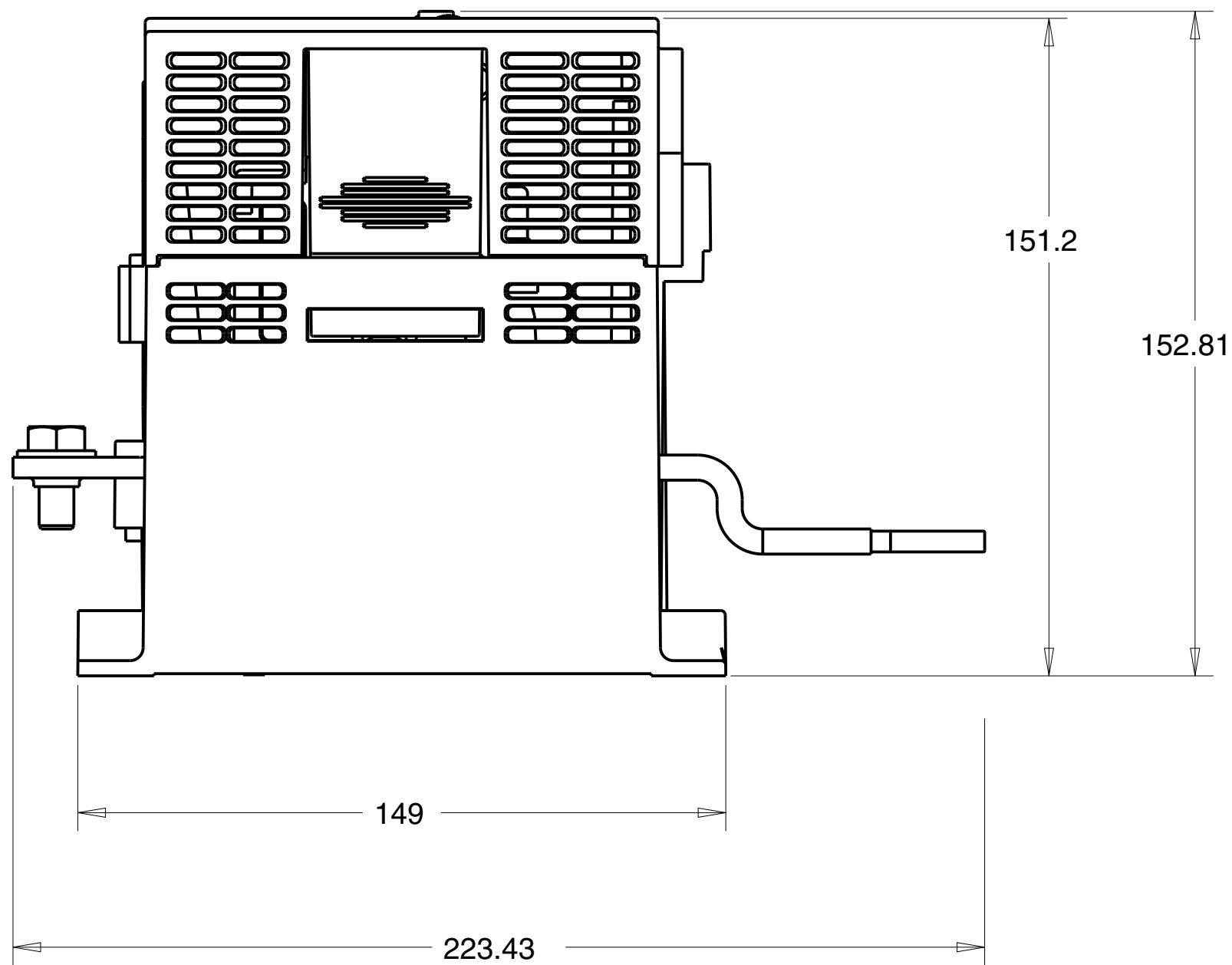


		CONFIDENTIAL AND PROPRIETARY INFORMATION. THIS DOCUMENT CONTAINS CONFIDENTIAL AND PROPRIETARY INFORMATION OF ROCKWELL AUTOMATION, INC. AND MAY NOT BE USED, COPIED OR DISCLOSED TO OTHERS, EXCEPT WITH THE AUTHORIZED WRITTEN PERMISSION OF ROCKWELL AUTOMATION, INC.	
		Sheet 2 Of 3	
MCS-E1 PLUS 200A O.L. RELAY		Size C	Ver 02
Drawn by: GLEHMAN	Date: NOV-14-2016	10000026167	

OVERLOAD RELAY ASSEMBLY USED WITH BUL. 100-E190\_ AND 100-E205\_ CONTACTORS,  
 CATALOG NUMBER 193-EEJJ AND CEP7-EEJJ



BUS BARS ARE THE ONLY  
 DIFFERENCE IN THIS  
 ASSEMBLY FROM OTHER  
 ASSEMBLIES SHOWN IN THIS  
 DRAWING



		CONFIDENTIAL AND PROPRIETARY INFORMATION. THIS DOCUMENT CONTAINS CONFIDENTIAL AND PROPRIETARY INFORMATION OF ROCKWELL AUTOMATION, INC. AND MAY NOT BE USED, COPIED OR DISCLOSED TO OTHERS, EXCEPT WITH THE AUTHORIZED WRITTEN PERMISSION OF ROCKWELL AUTOMATION, INC.	
		Sheet 3 Of 3	
MCS-E1 PLUS 200A O.L. RELAY		Size C	Ver 02
Drawn by: GLEHMAN	Date: JAN-27-2017	10000026167	