

889D-F4AC-2
STRAIGHT

889D-R4AC-2
RIGHT-ANGLE

MATING CONNECTOR

MATING CONNECTOR

NOTE: ALL DIMENSIONS IN INCHES (mm)

30mm MOUNTING NUT
(1 SUPPLIED WITH SENSOR)

M18

18mm MOUNTING NUT
(1 SUPPLIED WITH SENSOR)

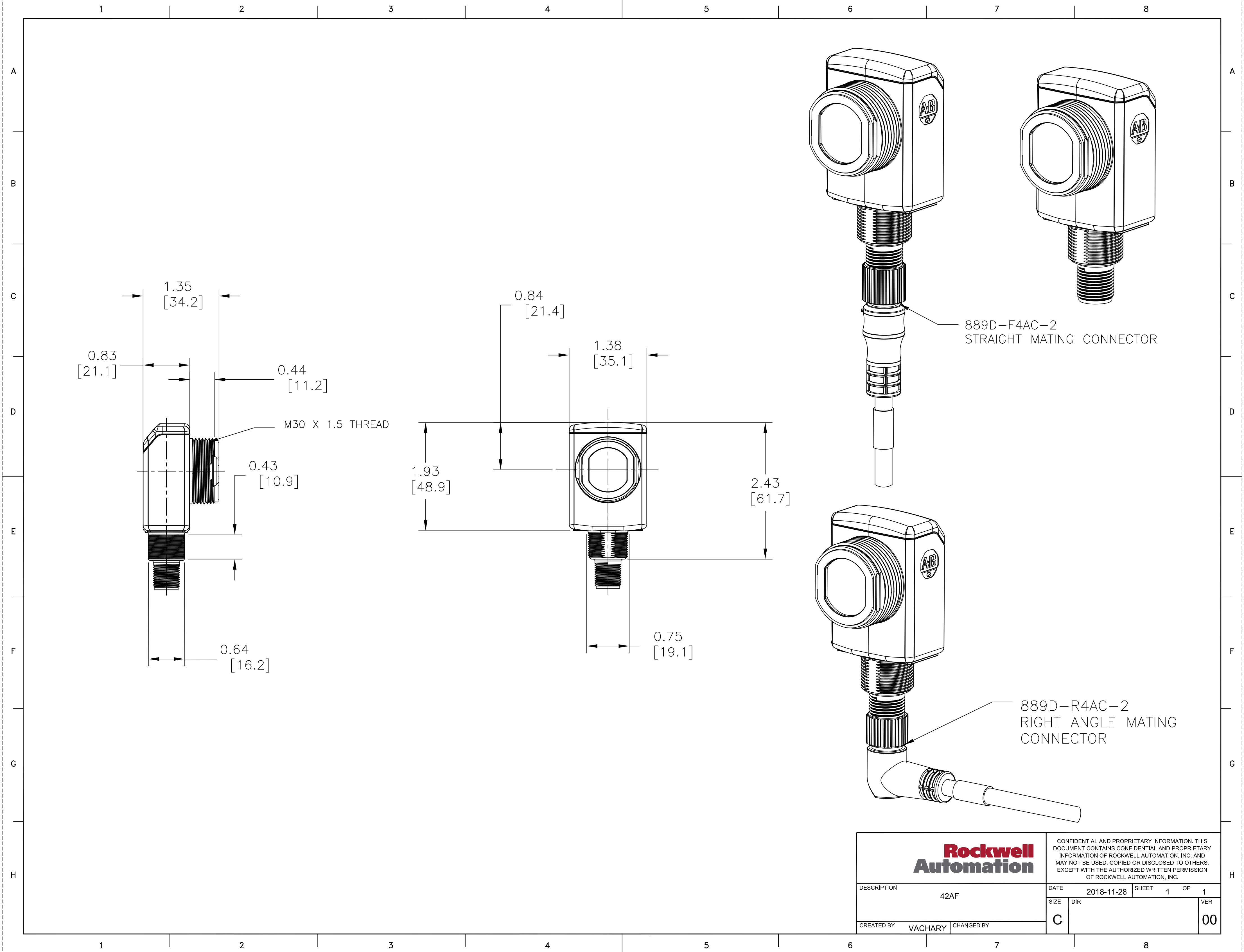
M30 X 1.5 THREAD

2m (6.56 ft) CABLE

**Rockwell
Automation**

CONFIDENTIAL AND PROPRIETARY INFORMATION. THIS DOCUMENT CONTAINS CONFIDENTIAL AND PROPRIETARY INFORMATION OF ROCKWELL AUTOMATION, INC. AND MAY NOT BE USED, COPIED OR DISCLOSED TO OTHERS, EXCEPT WITH THE AUTHORIZED WRITTEN PERMISSION OF ROCKWELL AUTOMATION, INC.

DESCRIPTION		DATE		SHEET		OF	
42AF		2018-11-28		1		1	
CREATED BY		VACHARY		CHANGED BY		C	
SIZE		DIR		VER		00	



Rockwell Automation		CONFIDENTIAL AND PROPRIETARY INFORMATION. THIS DOCUMENT CONTAINS CONFIDENTIAL AND PROPRIETARY INFORMATION OF ROCKWELL AUTOMATION, INC. AND MAY NOT BE USED, COPIED OR DISCLOSED TO OTHERS, EXCEPT WITH THE AUTHORIZED WRITTEN PERMISSION OF ROCKWELL AUTOMATION, INC.			
DESCRIPTION		DATE	2018-11-28	SHEET	1 OF 1
42AF		SIZE	DIR	VER	
CREATED BY VACHARY		CHANGED BY		C	
				00	