

DRG No. 3659

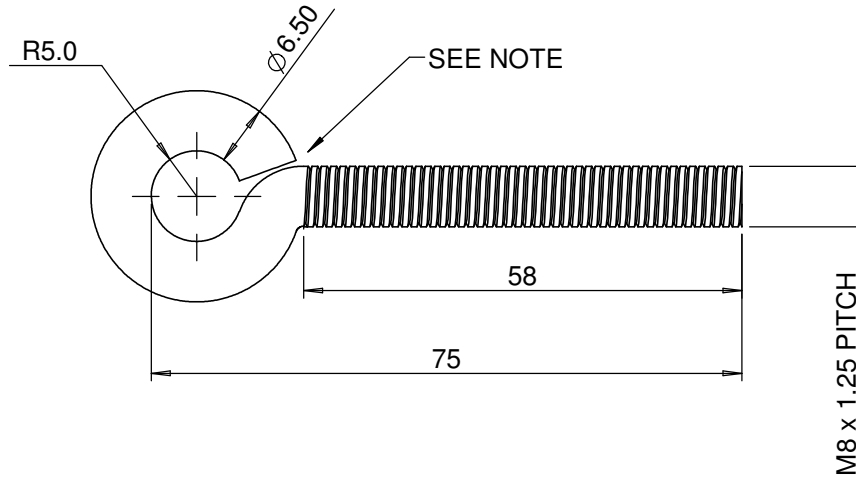
IF IN DOUBT ASK

DO NOT SCALE

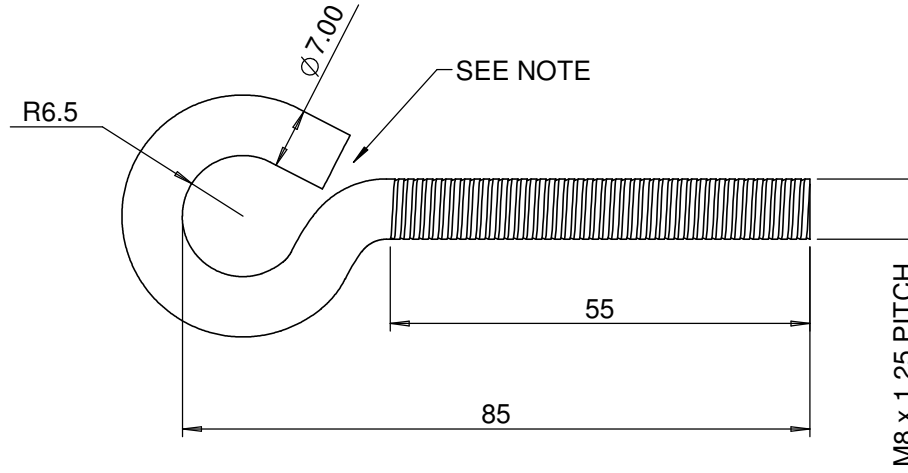
ALL DIMENSIONS IN mm

This drawing is the property of Rockwell Automation and may not be used for any other purpose other than that for which it was supplied without the express written authority of Rockwell Automation

OPTION A



OPTION B



NOTE:
BOTH 'EYE' ARE ACCEPTABLE.
THIS GAP TO BE AS SMALL AS POSSIBLE AND
MUST NOT EXCEED 1.2mm AT ANY TIME.

MUST BE FREE FROM BURRS AND SHARP EDGES.
'EYE' AREA MUST NOT EVIDENCE ANY ROUGH EDGES
THAT ARE LIKELY TO CAUSE ROPE WEAR.

TOLERANCE

ANGULAR

LINEAR

 $0^\circ \pm 2^\circ$ 0 ± 0.50 $0.0^\circ \pm 1^\circ$ 0.0 ± 0.20 $0.00^\circ \pm 0.5^\circ$ 0.00 ± 0.10 $0.000^\circ \pm 0.25^\circ$ 0.000 ± 0.05 

INDICATES CRITICAL DIMENSIONS

3	29611	FINISH NOTE ADDED	PG	DK	19/05/2011
2	13033	OPTION B ADDED	JRH	JRH	09/02/98
1	10992	SUPPLIER REF DELETED	JRH	JRH	01/03/94
ISS	EO	DESCRIPTION	DRW	APP	DATE

THIRD ANGLE PROJ.

SCALE 1:1

Must Conform to RoHS Directive (2002/95/EC)

MATERIAL MILD STEEL

FINISH ZINC PLATED AND PASIVATED

TITLE EYE BOLT

**Rockwell
Automation**

Ormside Close, Hindley Green,
Wigan, Lancashire, WN2 4HR

TEL: 01942 257112
FAX: 01942 523259

DRAWN

JRH

DATE

04/02/98

CHECKED

DATE

APPROVED

DATE

DRG No. 3659

A4

PART No. 09021