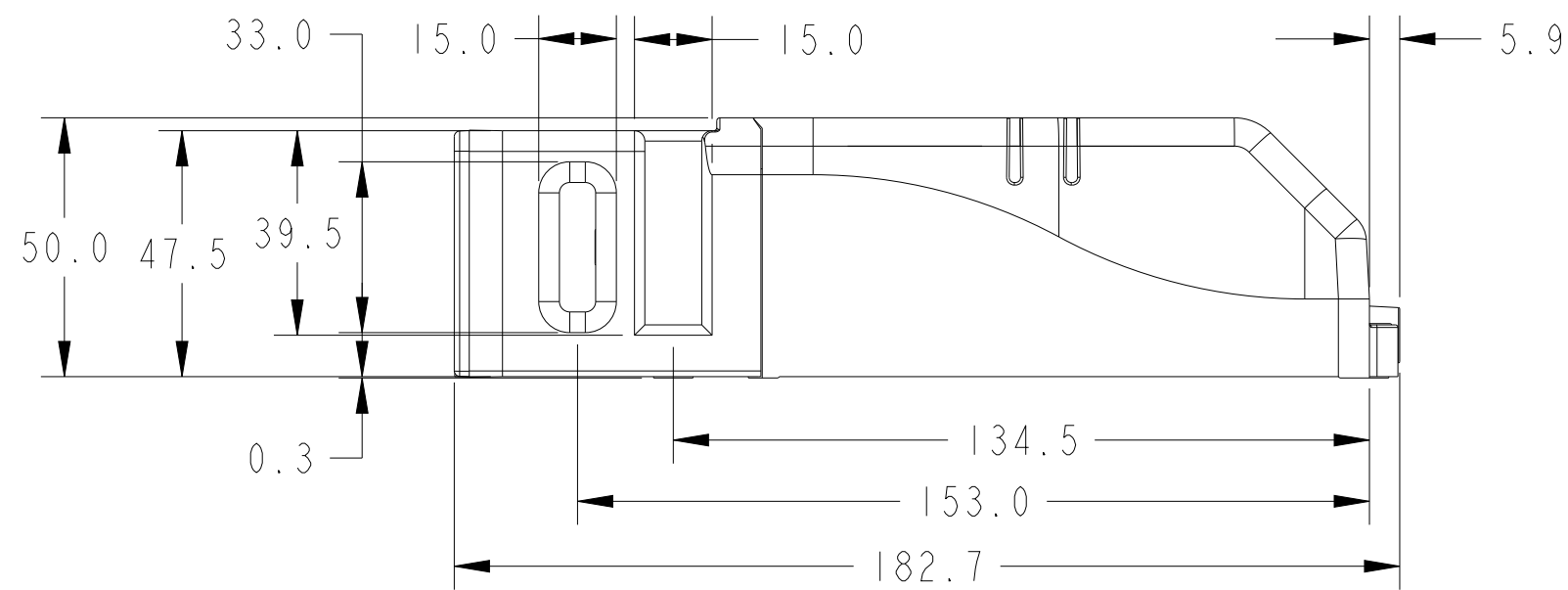
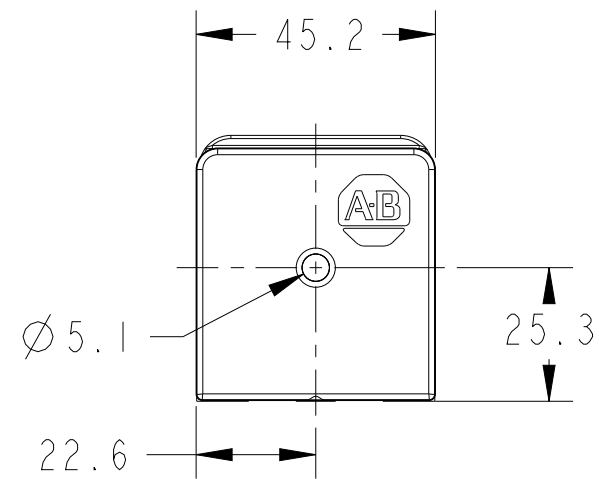
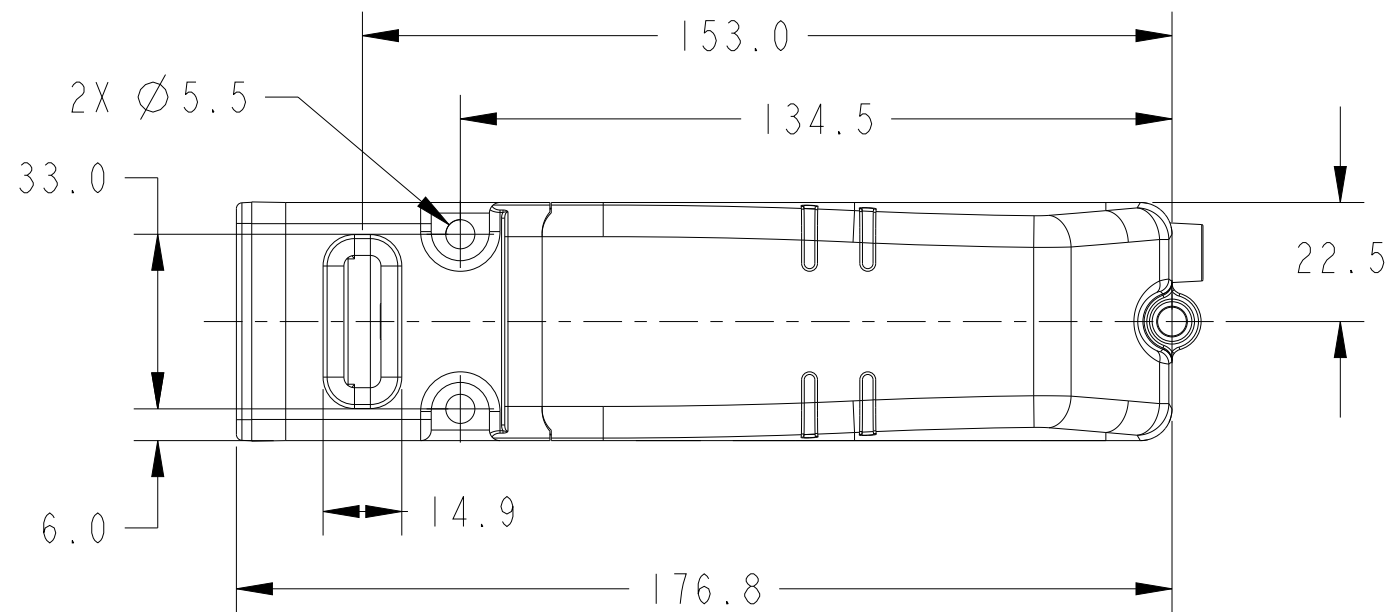


GUARD LOCKING SWITCH



CONFIDENTIAL AND PROPRIETARY INFORMATION.
THIS DOCUMENT CONTAINS CONFIDENTIAL AND PROPRIETARY
INFORMATION OF ROCKWELL AUTOMATION, INC. AND MAY
NOT BE USED, COPIED OR DISCLOSED TO OTHERS, EXCEPT
WITH THE AUTHORIZED WRITTEN PERMISSION OF ROCKWELL
AUTOMATION, INC.

DESCRIPTION

GUARD LOCKING SWITCH

CREATED BY: SRAOI

CHANGED BY: SGOWDAI

DATE: 2021-08-20

SHEET 1 OF 10

SIZE

DIR

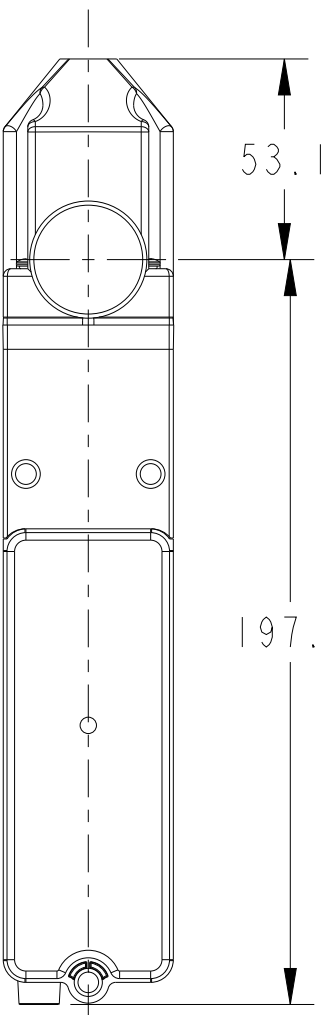
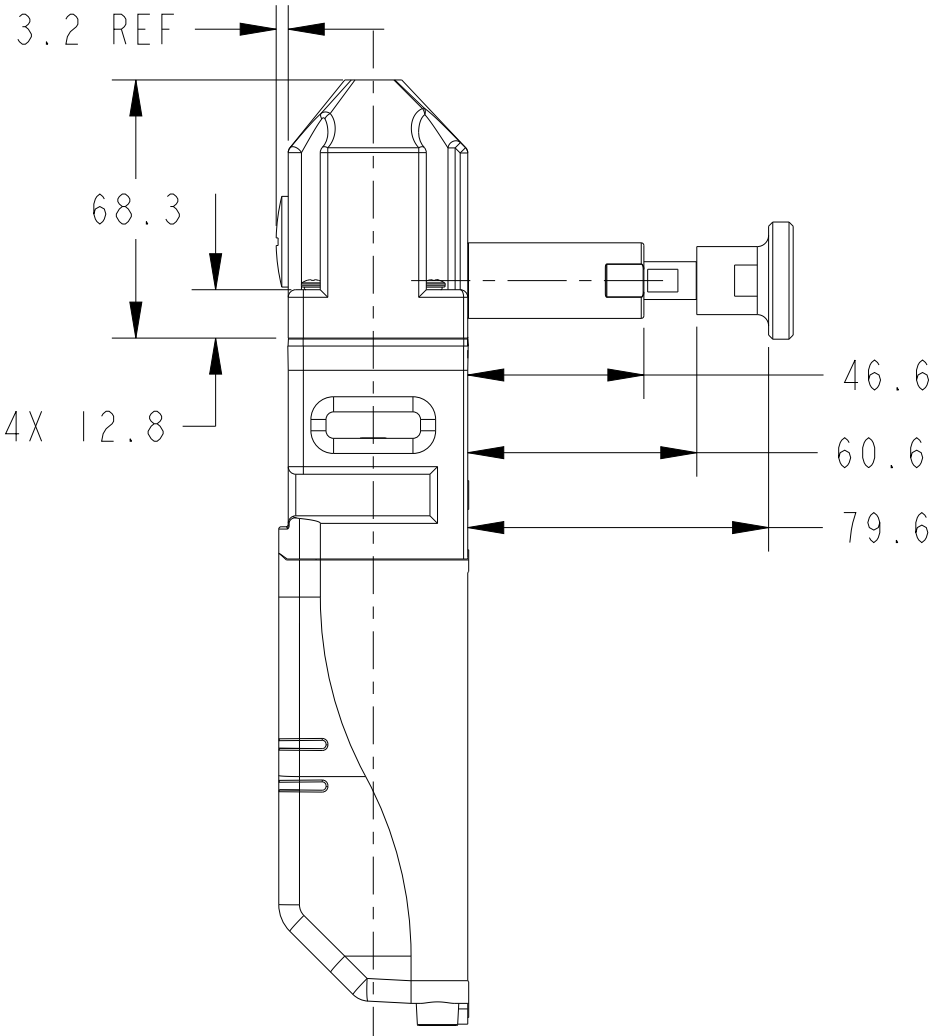
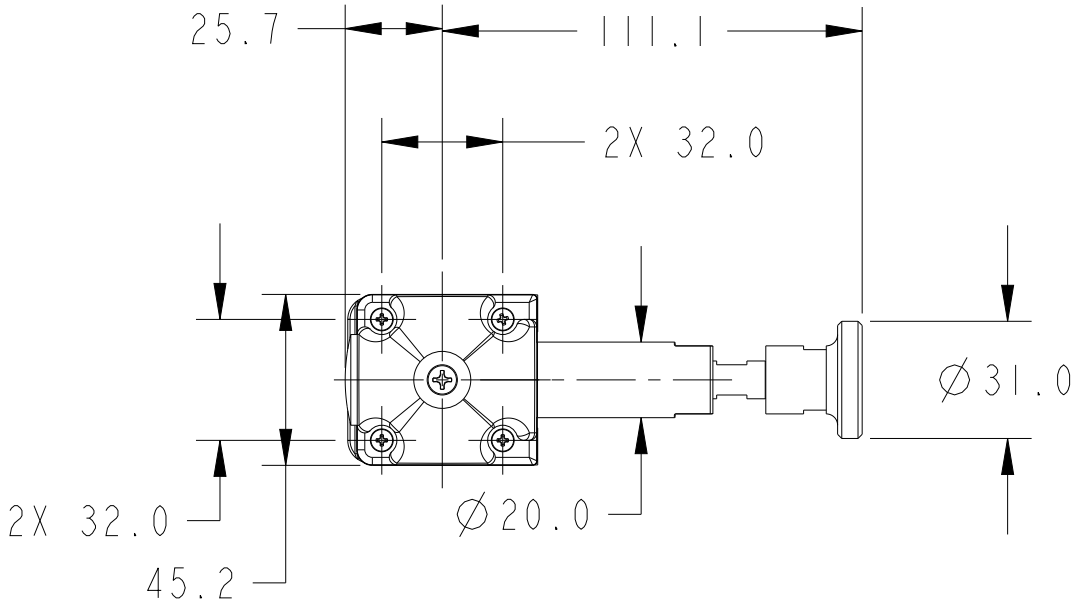
VER

B


10005117711

01

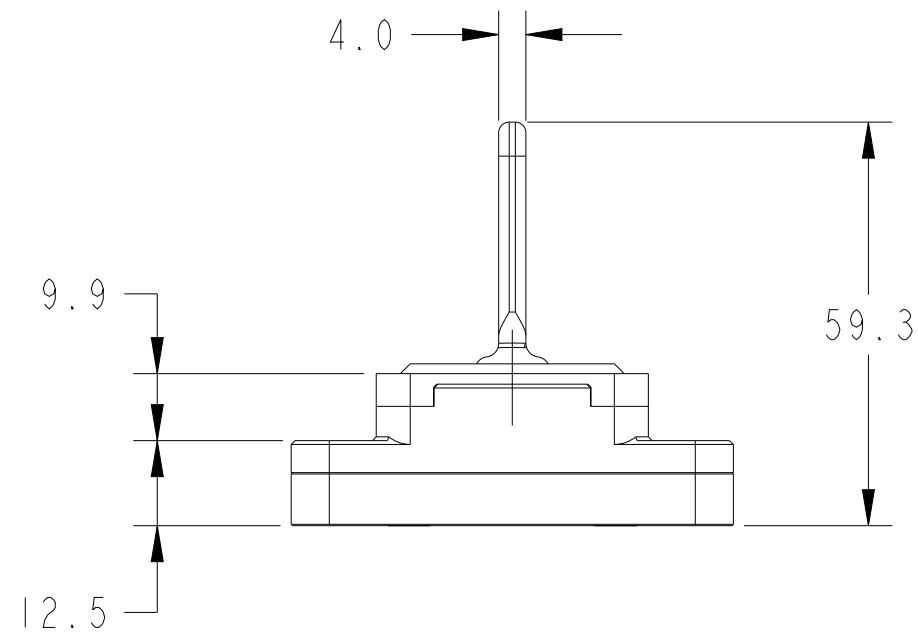
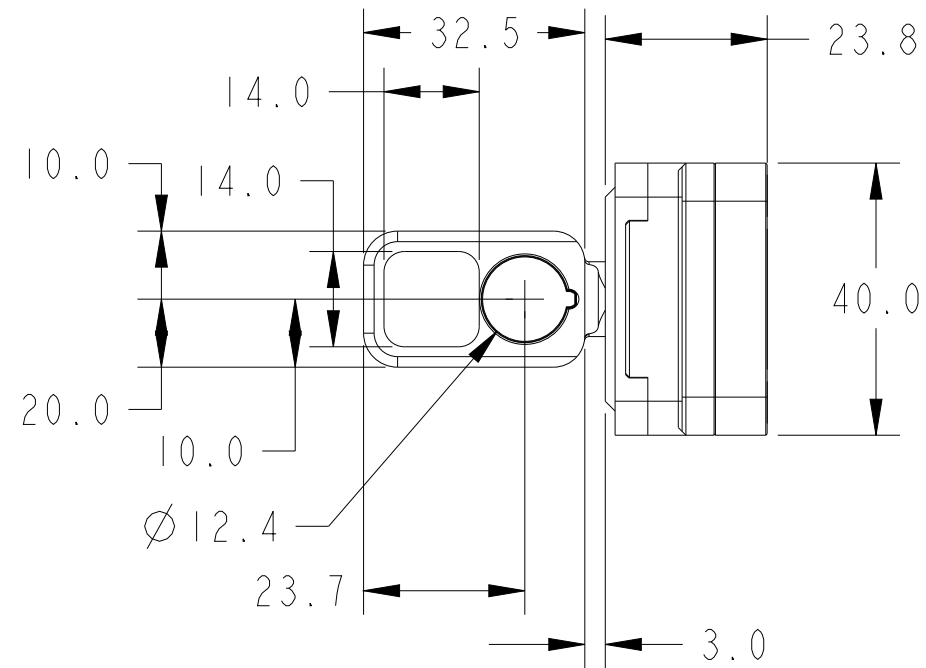
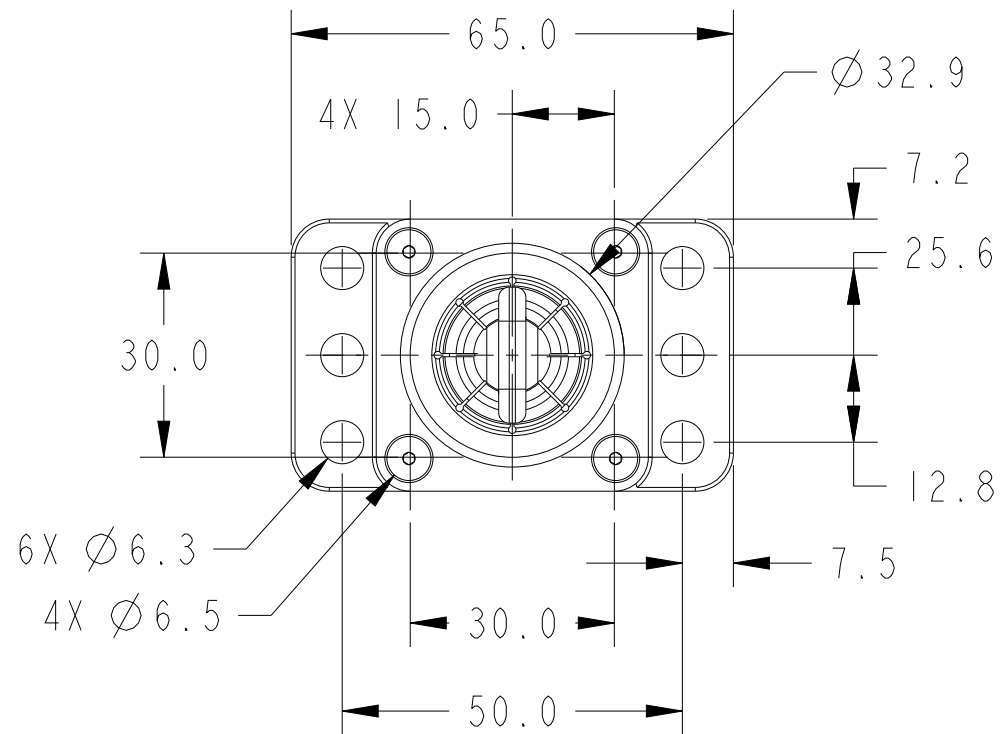
GUARD LOCKING SWITCH WITH ESCAPE RELEASE



NOTE:
1. ALL DIMENSIONS FROM SHEET 1 APPLY FOR THE
ESCAPE RELEASE VERSION AS WELL IN SHEET 2.

DESCRIPTION				CONFIDENTIAL AND PROPRIETARY INFORMATION. THIS DOCUMENT CONTAINS CONFIDENTIAL AND PROPRIETARY INFORMATION OF ROCKWELL AUTOMATION, INC. AND MAY NOT BE USED, COPIED OR DISCLOSED TO OTHERS, EXCEPT WITH THE AUTHORIZED WRITTEN PERMISSION OF ROCKWELL AUTOMATION, INC.	
		GUARD LOCKING SWITCH WITH ESCAPE RELEASE		DATE: 2021-08-20	SHEET 2 OF 10
		CREATED BY: SRAOI	CHANGED BY: SGOWDAI	SIZE B	DIR 10005117711 VER 01

ACTUATOR



CONFIDENTIAL AND PROPRIETARY INFORMATION.
THIS DOCUMENT CONTAINS CONFIDENTIAL AND PROPRIETARY
INFORMATION OF ROCKWELL AUTOMATION, INC. AND MAY
NOT BE USED, COPIED OR DISCLOSED TO OTHERS, EXCEPT
WITH THE AUTHORIZED WRITTEN PERMISSION OF ROCKWELL
AUTOMATION, INC.

DESCRIPTION

ACTUATOR

DATE: 2021-08-20

SHEET 3 OF 10

SIZE DIR

B

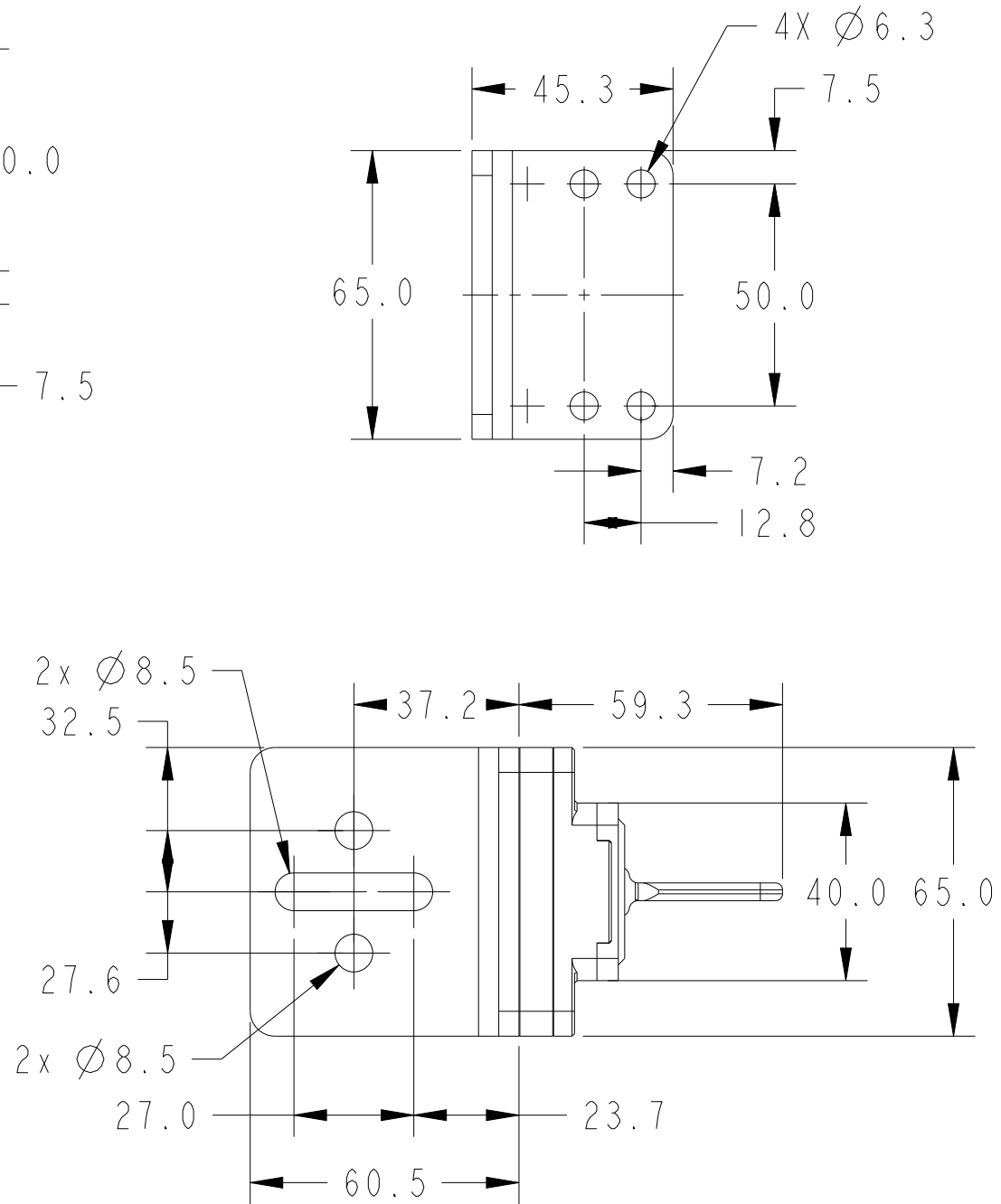
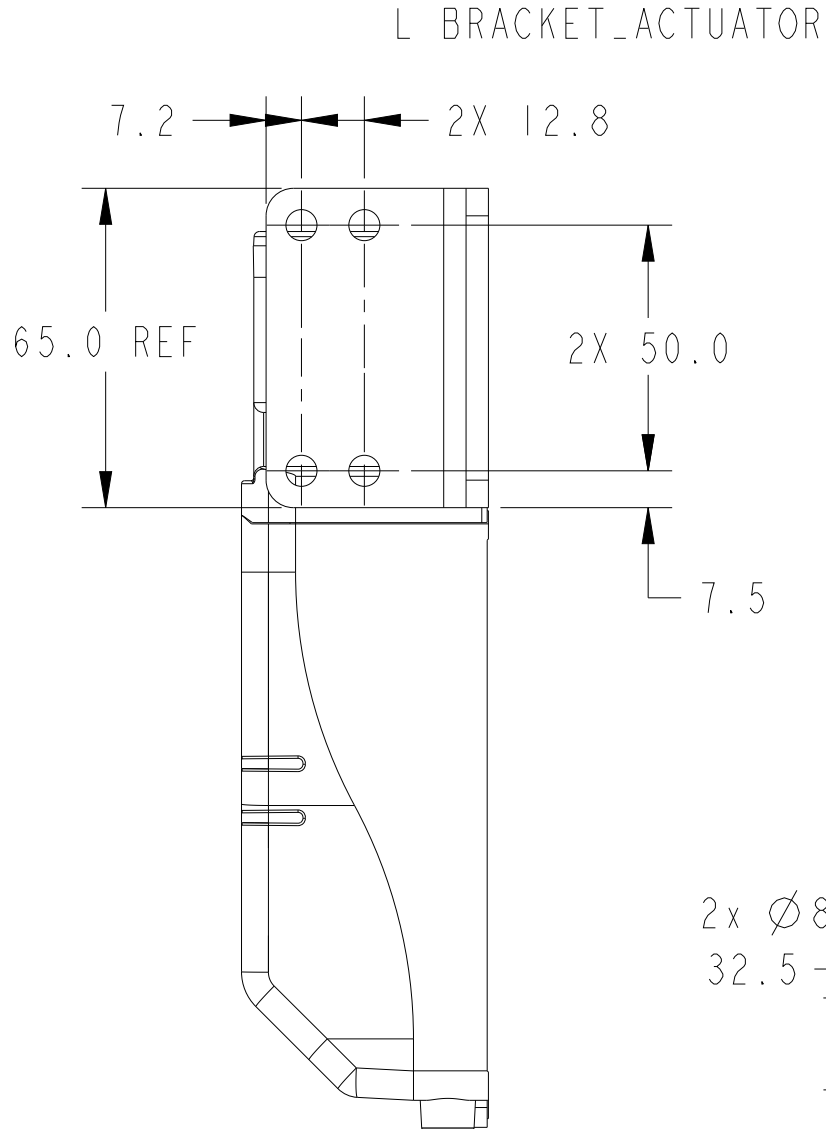
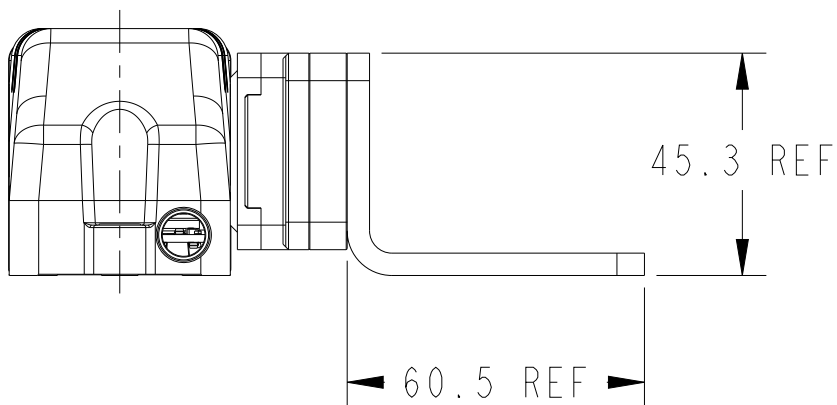
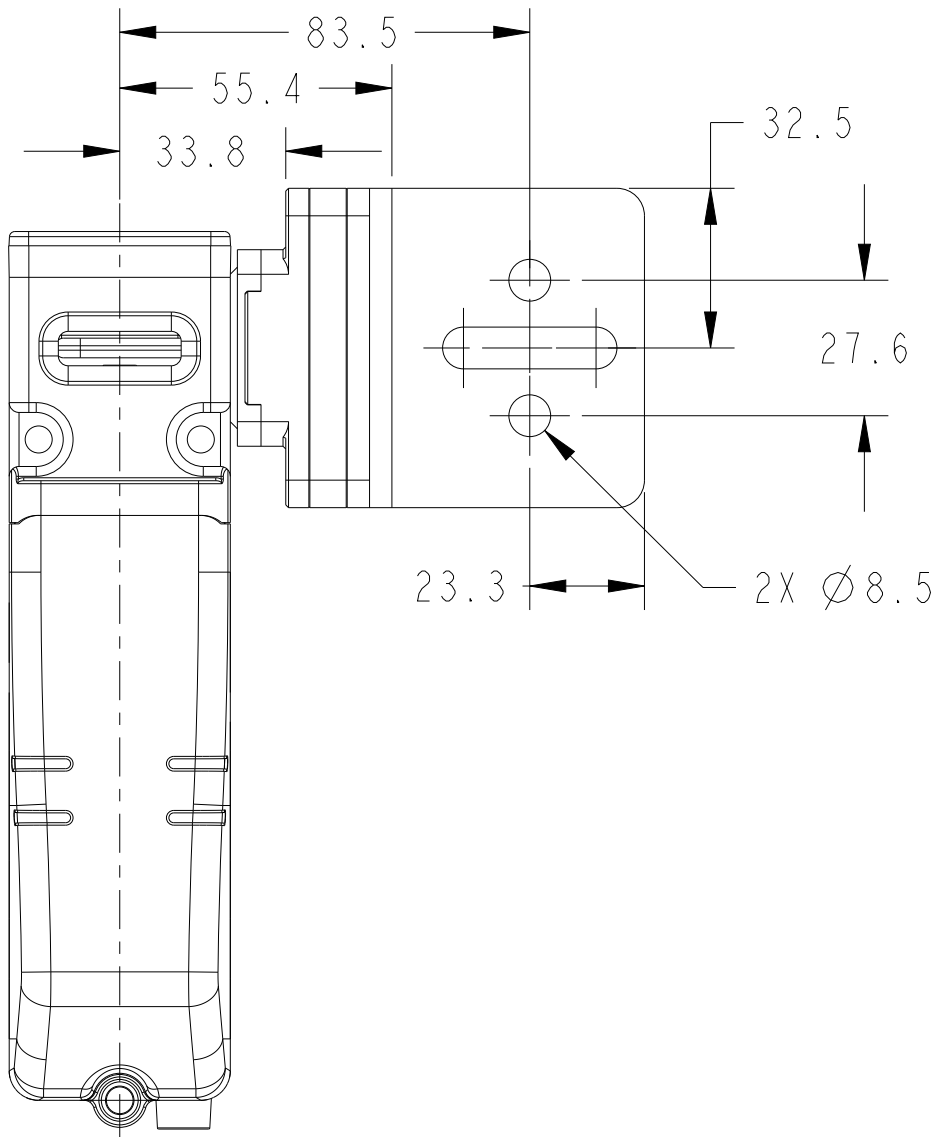
10005117711

VER

01

CREATED BY: SMATHAP

CHANGED BY: SGOWDAI



CONFIDENTIAL AND PROPRIETARY INFORMATION.
THIS DOCUMENT CONTAINS CONFIDENTIAL AND PROPRIETARY
INFORMATION OF ROCKWELL AUTOMATION, INC. AND MAY
NOT BE USED, COPIED OR DISCLOSED TO OTHERS, EXCEPT
WITH THE AUTHORIZED WRITTEN PERMISSION OF ROCKWELL
AUTOMATION, INC.

DESCRIPTION

L BRACKET, ACTUATOR

CREATED BY: SMATHAP

CHANGED BY: SGOWDAI

DATE: 2021-08-20

SHEET 4 OF 10

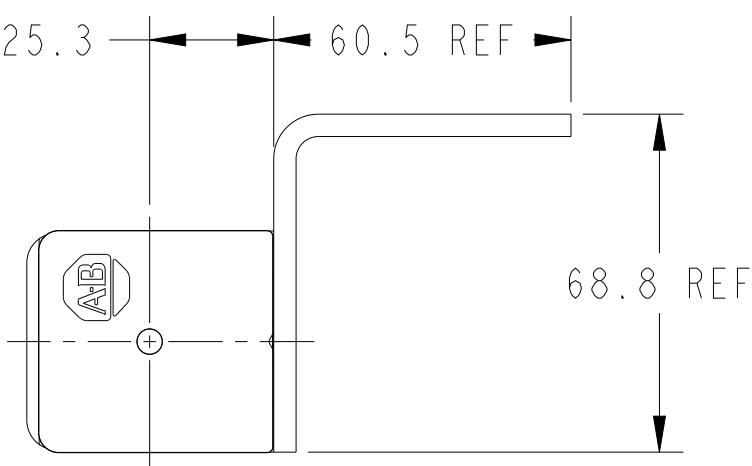
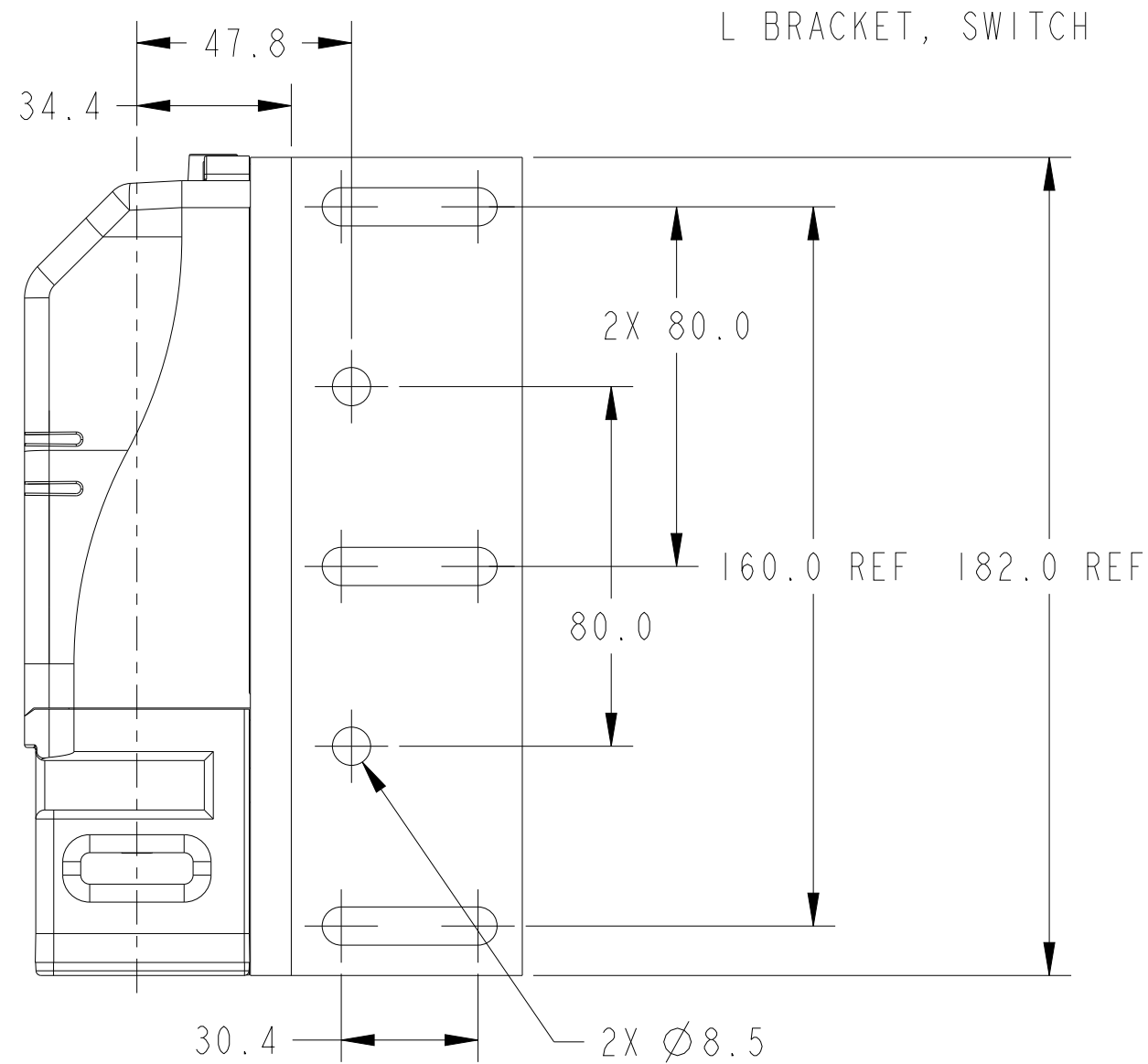
SIZE DIR


B

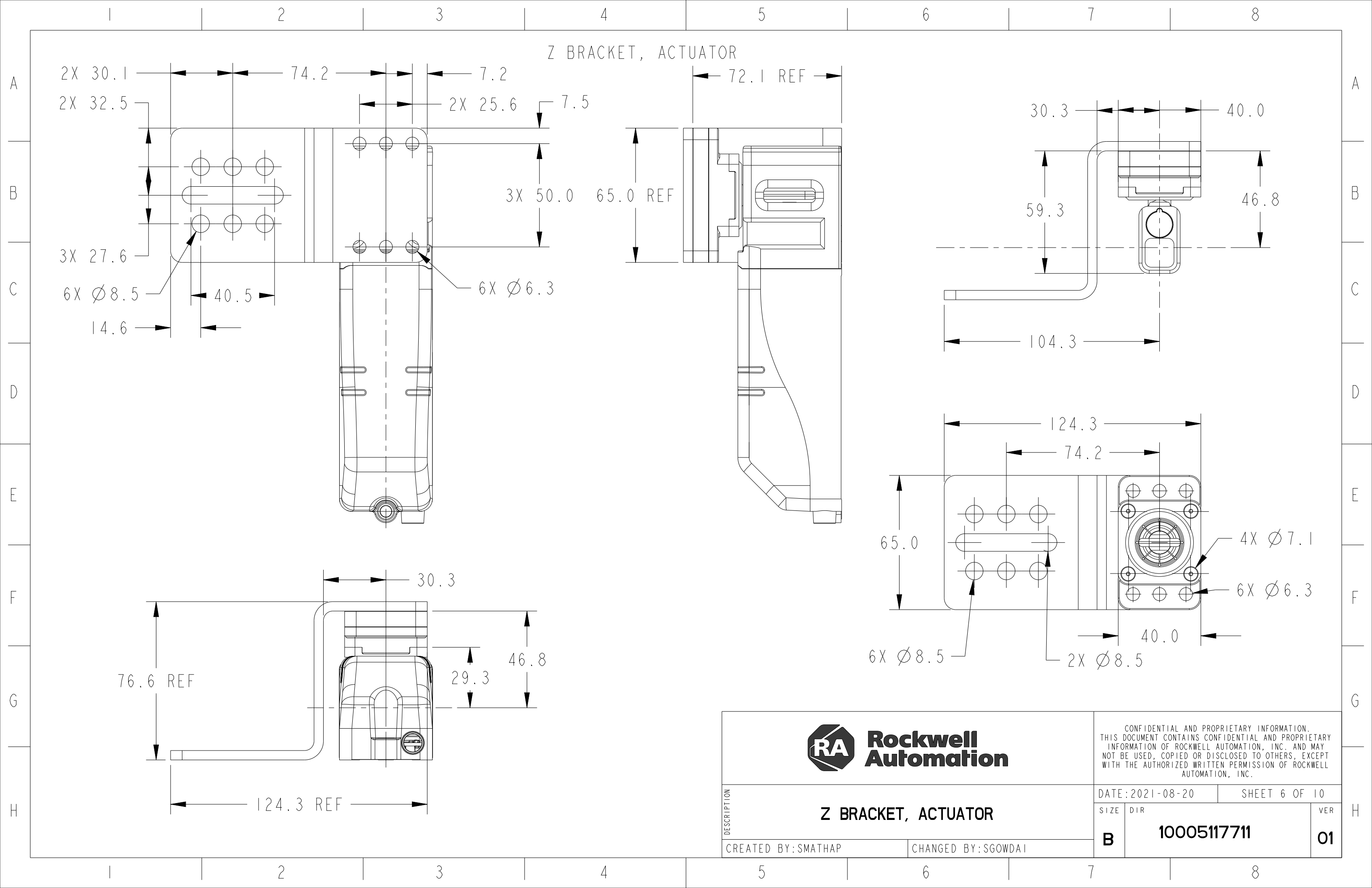
10005117711

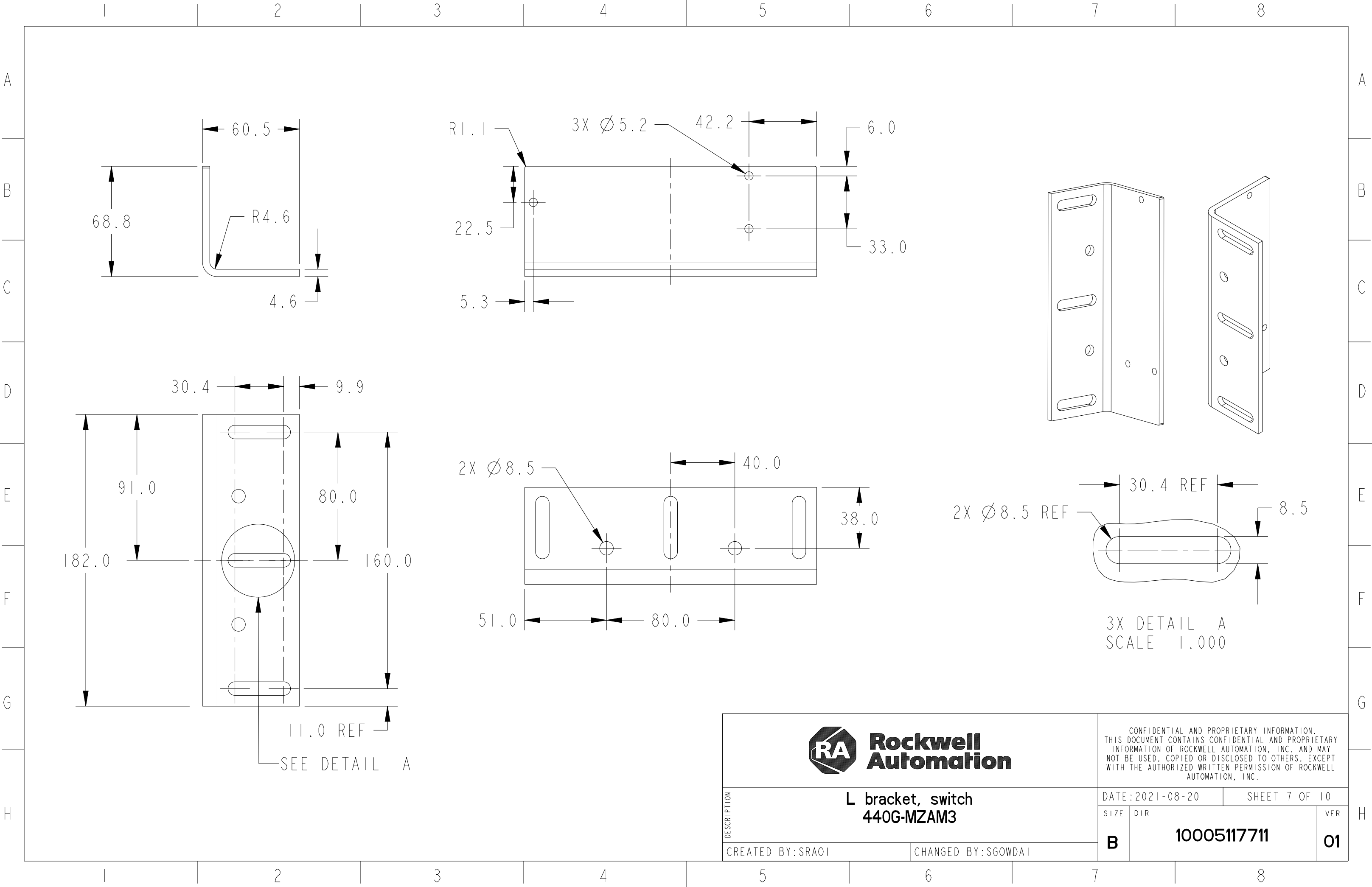
VER


01



 Rockwell Automation		CONFIDENTIAL AND PROPRIETARY INFORMATION. THIS DOCUMENT CONTAINS CONFIDENTIAL AND PROPRIETARY INFORMATION OF ROCKWELL AUTOMATION, INC. AND MAY NOT BE USED, COPIED OR DISCLOSED TO OTHERS, EXCEPT WITH THE AUTHORIZED WRITTEN PERMISSION OF ROCKWELL AUTOMATION, INC.				
DESCRIPTION	L BRACKET, SWITCH		DATE: 2021-08-20		SHEET 5 OF 10	
			SIZE	DIR	VER	
	CREATED BY: SMATHAP	CHANGED BY: SGOWDAI	B	10005117711		01

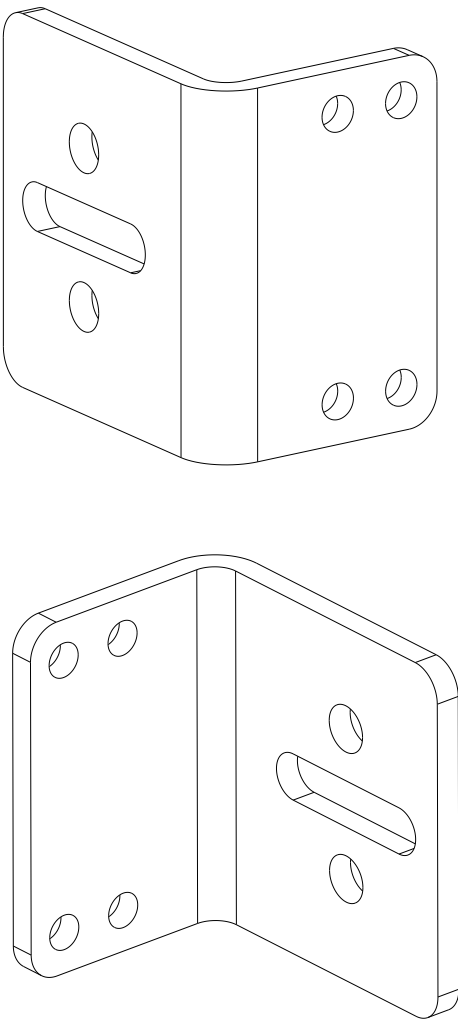
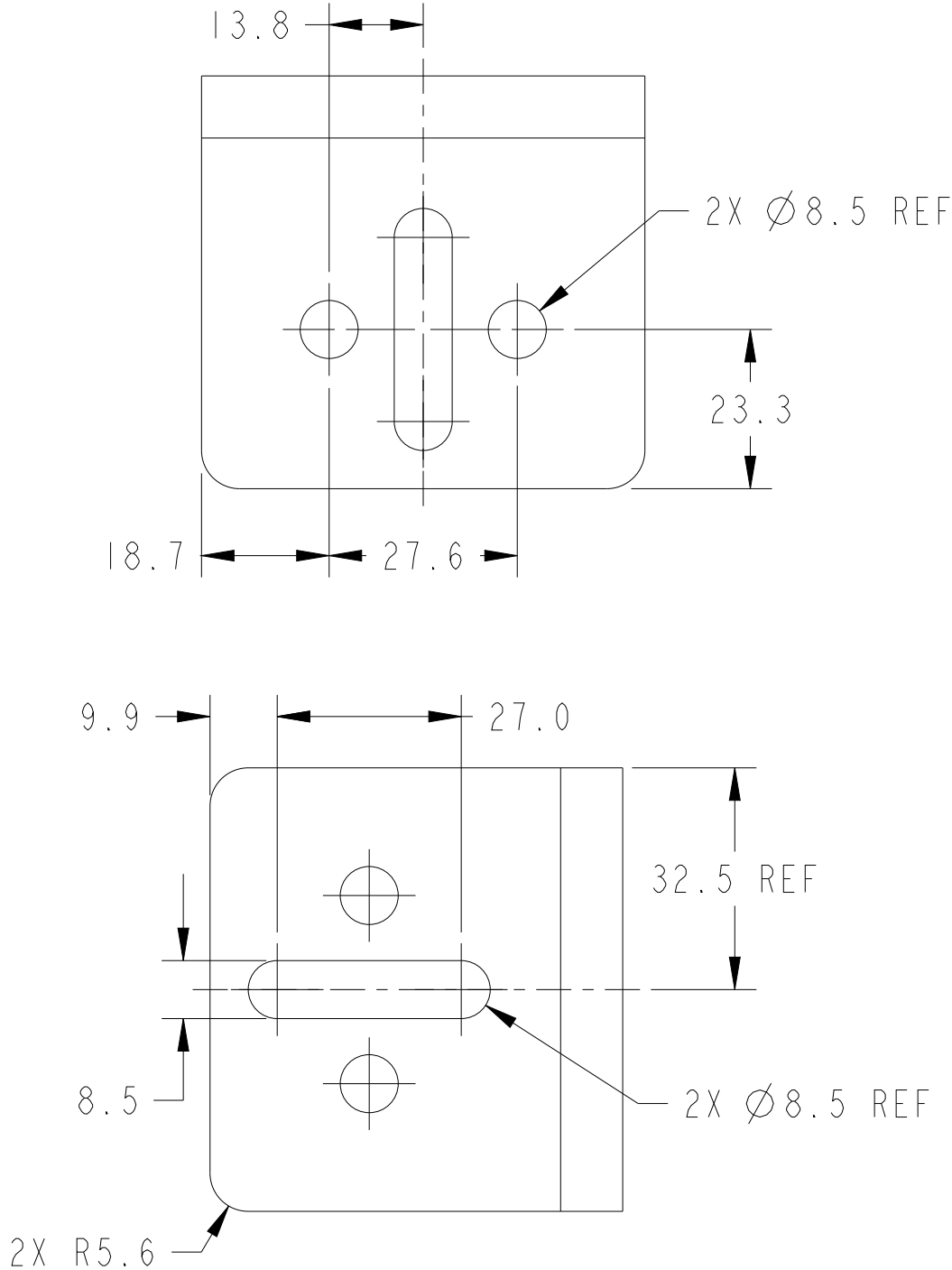
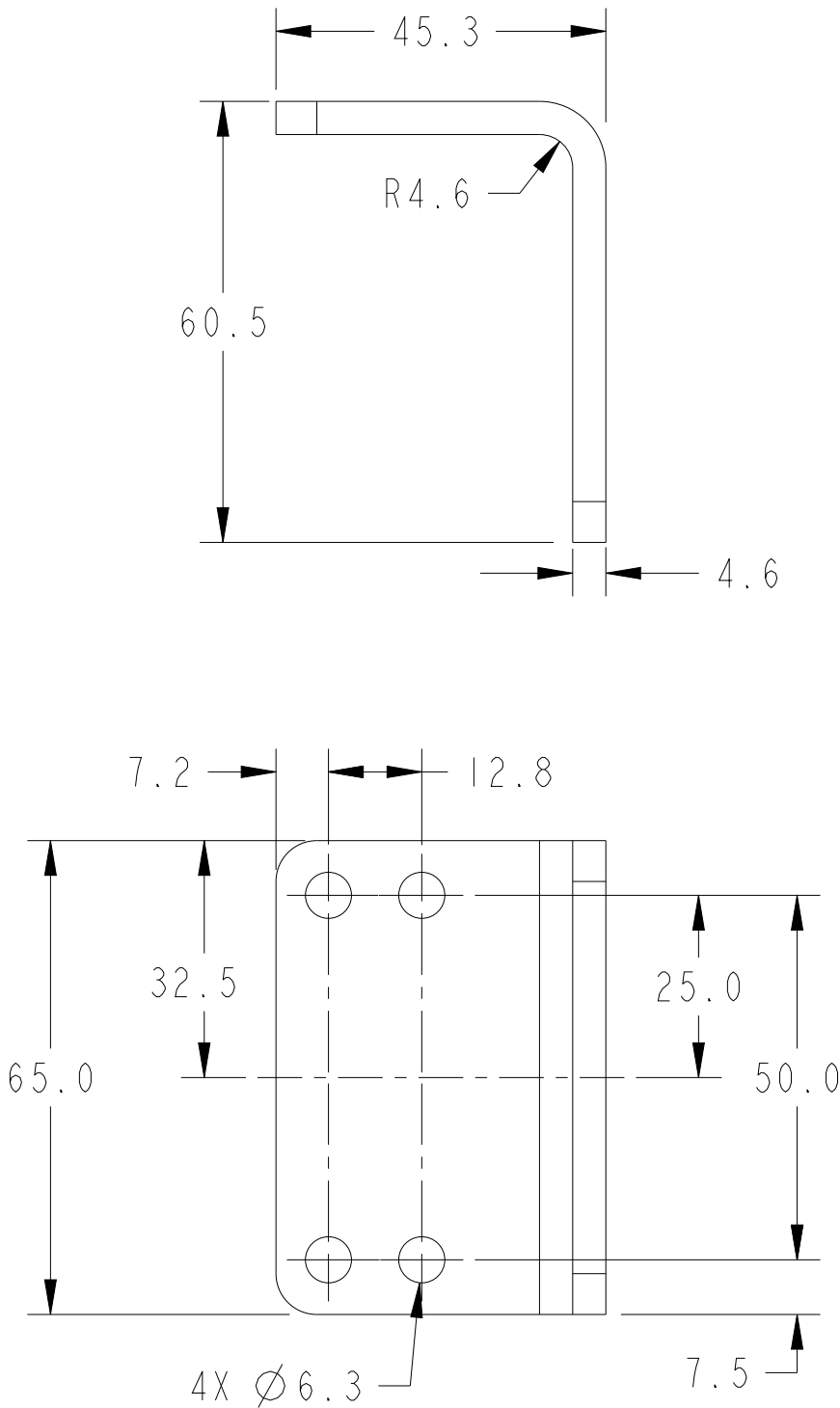





DESCRIPTION	 Rockwell Automation		CONFIDENTIAL AND PROPRIETARY INFORMATION. THIS DOCUMENT CONTAINS CONFIDENTIAL AND PROPRIETARY INFORMATION OF ROCKWELL AUTOMATION, INC. AND MAY NOT BE USED, COPIED OR DISCLOSED TO OTHERS, EXCEPT WITH THE AUTHORIZED WRITTEN PERMISSION OF ROCKWELL AUTOMATION, INC.			
	L bracket, switch 440G-MZAM3		DATE: 2021-08-20		SHEET 7 OF 10	
			SIZE	DIR	VER	
	CREATED BY: SRAOI		CHANGED BY: SGOWDAI		B	10005117711

A
B
C
D
E
F
G
H

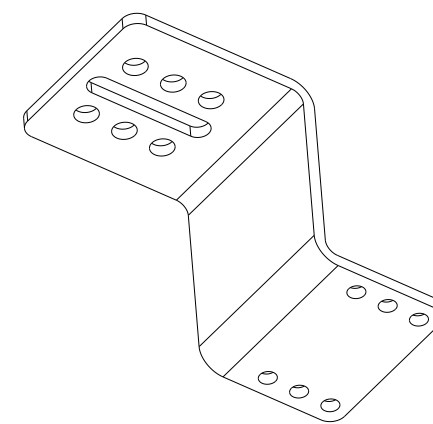
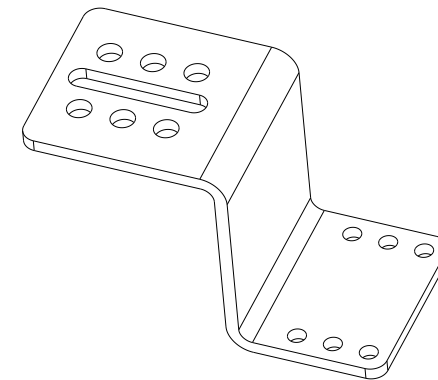
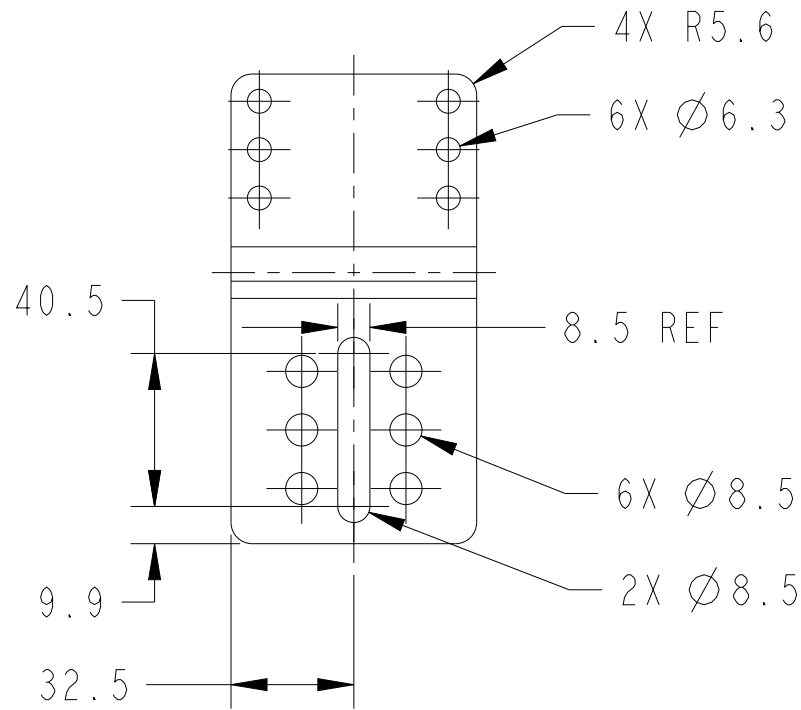
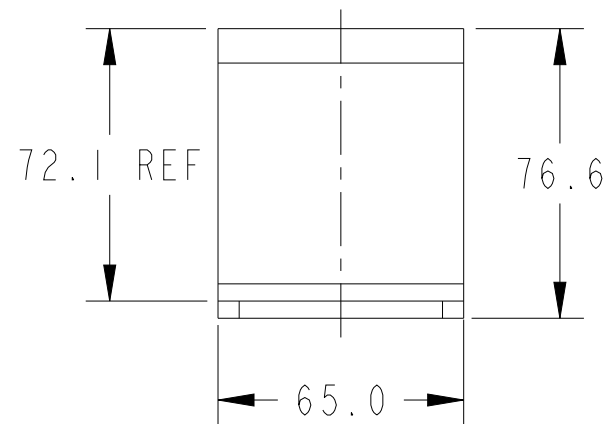
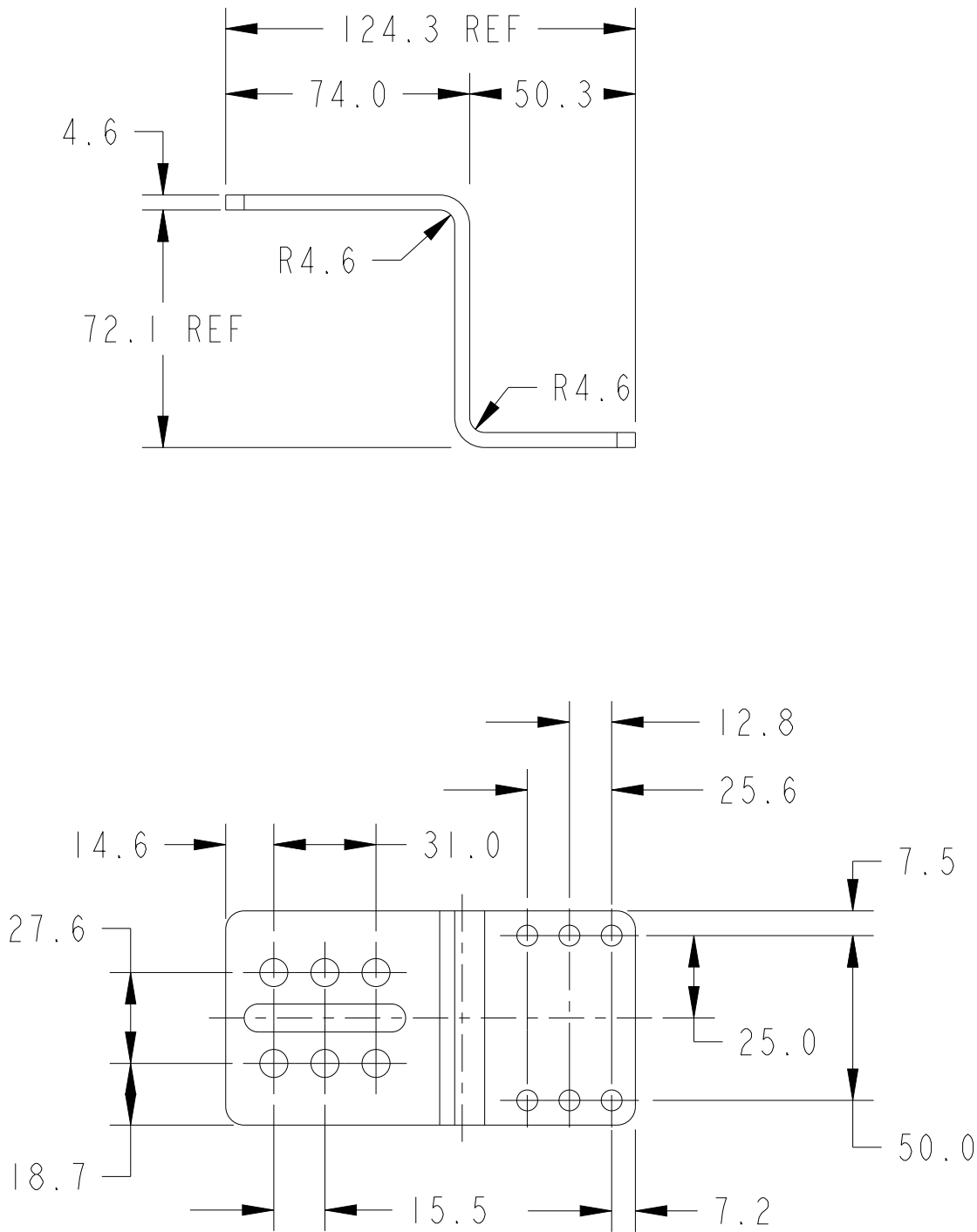
A
B
C
D
E
F
G
H



 Rockwell Automation			CONFIDENTIAL AND PROPRIETARY INFORMATION. THIS DOCUMENT CONTAINS CONFIDENTIAL AND PROPRIETARY INFORMATION OF ROCKWELL AUTOMATION, INC. AND MAY NOT BE USED, COPIED OR DISCLOSED TO OTHERS, EXCEPT WITH THE AUTHORIZED WRITTEN PERMISSION OF ROCKWELL AUTOMATION, INC.			
DESCRIPTION	L bracket, actuator 440G-MZAM1		DATE: 2021-08-20		SHEET 8 OF 10	
			SIZE	DIR	VER	
	CREATED BY: SRAOI		CHANGED BY: SGOWDAI		B	10005117711

I 2 3 4 5 6 7 8

A
B
C
D
E
F
G
H



CONFIDENTIAL AND PROPRIETARY INFORMATION.
THIS DOCUMENT CONTAINS CONFIDENTIAL AND PROPRIETARY
INFORMATION OF ROCKWELL AUTOMATION, INC. AND MAY
NOT BE USED, COPIED OR DISCLOSED TO OTHERS, EXCEPT
WITH THE AUTHORIZED WRITTEN PERMISSION OF ROCKWELL
AUTOMATION, INC.

DESCRIPTION	Z Bracket, Actuator 440G-MZAM2		DATE: 2021-08-20		SHEET 9 OF 10	
			SIZE	DIR	VER	
	CREATED BY: SRAOI	CHANGED BY: SGOWDAI	B	10005117711		01

