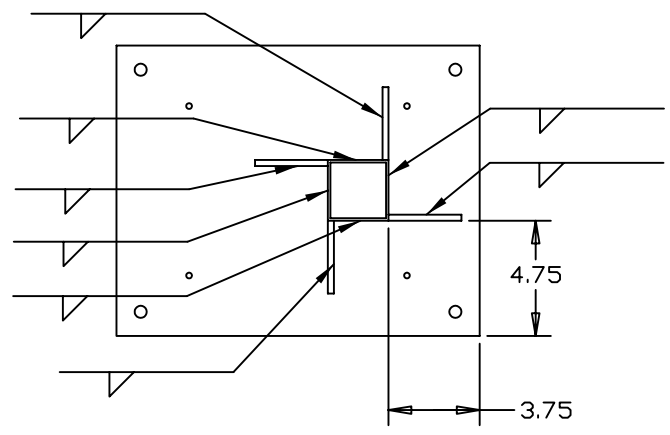


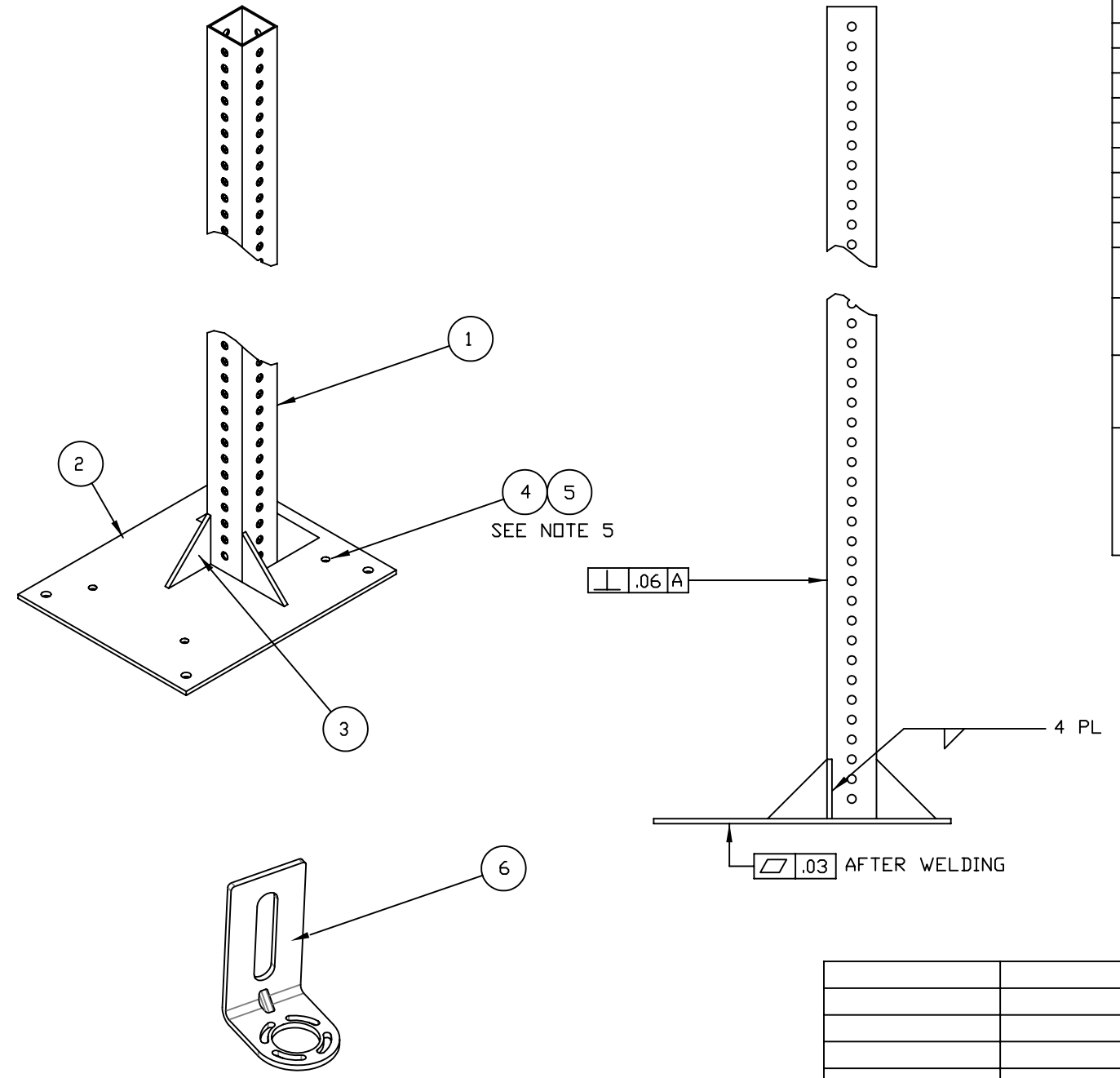
CLASSIFICATION TABLE				
P=Performance, F=Fit, A=Assembly (use only with \diamond symbol)				
X=Identifies applicable classifications				
\diamond =Required by Engineering and/or Manufacturing				
\textcircled{R} =Strict conformance to specification required and is not negotiable(may be required by Regulatory Agency)				
CHARACTERISTIC OR DIMENSION	COMMENT	DRAWING LOCATION (ZONE)	\diamond	\textcircled{R}

REVISIONS		
E.D. NO.	REV.	DESCRIPTION
0501P01	1	RELEASED -01 @ CHG LTR A
0576P06	2	ADD NOTES 3, 4 & 5, SERIES B, ITEMS 4, 5, & 6 @ CHG LTR B FOR -01



AMOUNT	PART NO.	DESCRIPTION	IT.
1	75035-131-72	POST	1
1	75035-132-01	BASE PLATE	2
4	75035-133-01	STIFFENING BRACKET	3
4	SEE NOTE 3	SET SCREWS	4
4	SEE NOTE 4	HEX NUT/L'WASHER	5
2	75046-011-03	MOUNTING BRACKET	6
X	75035-407	PACKING PROCEDURE	X

- NOTES:
- FINISH: HB FULLER 1F0912 URETHANE POWDER COAT OR OTHER APPROVED BY DEVELOPMENT ENGINEERING. COATING TO BE APPLIED AFTER WELDING.
 - WELDMENT: ALL FILLET WELDS TO BE FULL LENGTH OF EDGE.
 - SET SCREW: STD. SOCKET, STEEL, CONE POINT, BLACK FINISH, HEX KEY SIZE 5mm, METRIC THREAD SIZE M10, LENGTH 50mm, PITCH 1.5mm, THREAD FIT CLASS 6g, TO COMPLY WITH ASTM F912, ISO 4027, DIN 914, ROCKWELL HARDNESS C45.
 - NUT: MACHINE SCREW HEX NUT WITH TOOTH WASHER, STEEL ZINC-PLATED, METRIC THREAD SIZE M10, PITCH 1.5mm STANDARD RIGHT HAND THREAD, WASHER DIA. 20.1mm, WIDTH 17mm, HEIGHT 8mm, ROCKWELL HARDNESS MAXIMUM C44.
 - SCREWS AND NUTS TO BE ASSEMBLED TO THE MOUNTING STAND OR PACKED AND SEALED IN A PLASTIC BAG AND PACKED WITH THE MOUNTING STAND.
 - BRACKET TO BE SEALED IN A PLASTIC BAG AND PACKED WITH THE MOUNTING STAND.



UNLESS OTHERWISE SPECIFIED		MOUNTING STAND		ROCKWELL AUTOMATION	
DIMENSIONS ARE IN INCHES		440L LIGHT CURTAIN		TWO EXECUTIVE DRIVE	
TOLERANCES ON				CHELMSFORD, MASSACHUSETTS 01824	
X.X=±0.1	X.XXX=±0.005			CONFIDENTIAL AND PROPRIETARY INFORMATION. THIS DOCUMENT CONTAINS CONFIDENTIAL AND PROPRIETARY INFORMATION OF ROCKWELL AUTOMATION, INC. AND MAY NOT BE USED, COPIED OR DISCLOSED TO OTHERS, EXCEPT WITH THE AUTHORIZED WRITTEN PERMISSION OF ROCKWELL AUTOMATION, INC.	
X.XX=±0.01	ANG.=±0.5°			DWG. NO. 75035-472	
MATERIAL				REV. 2	
FINISH		SEE TABLE		SIZE C SHEET 1 OF 1	
SCALE		0.20		DR. B. FORTIER DATE 5/16/01	
NEXT ASSY	USED ON				
APPLICATION					