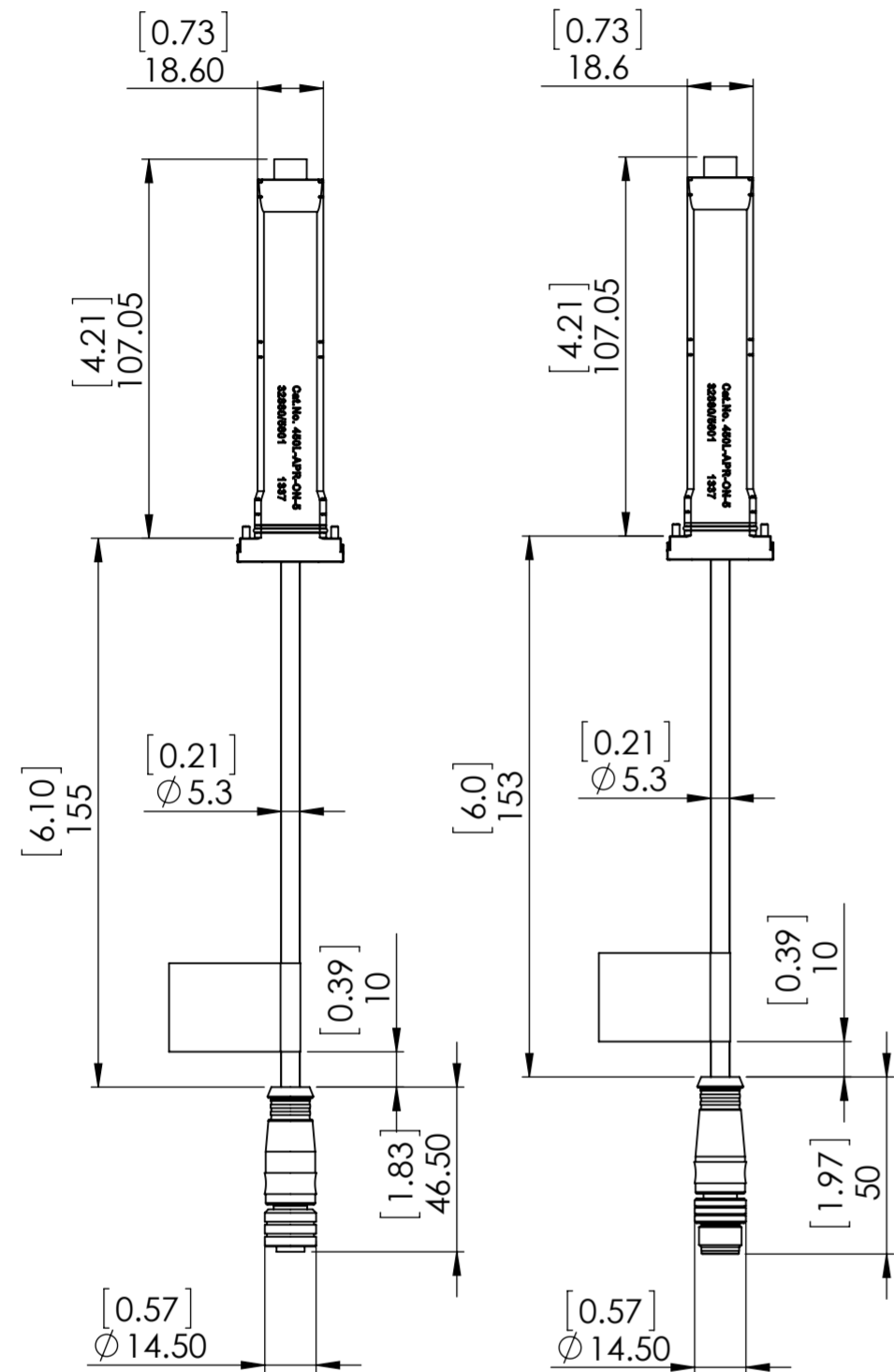
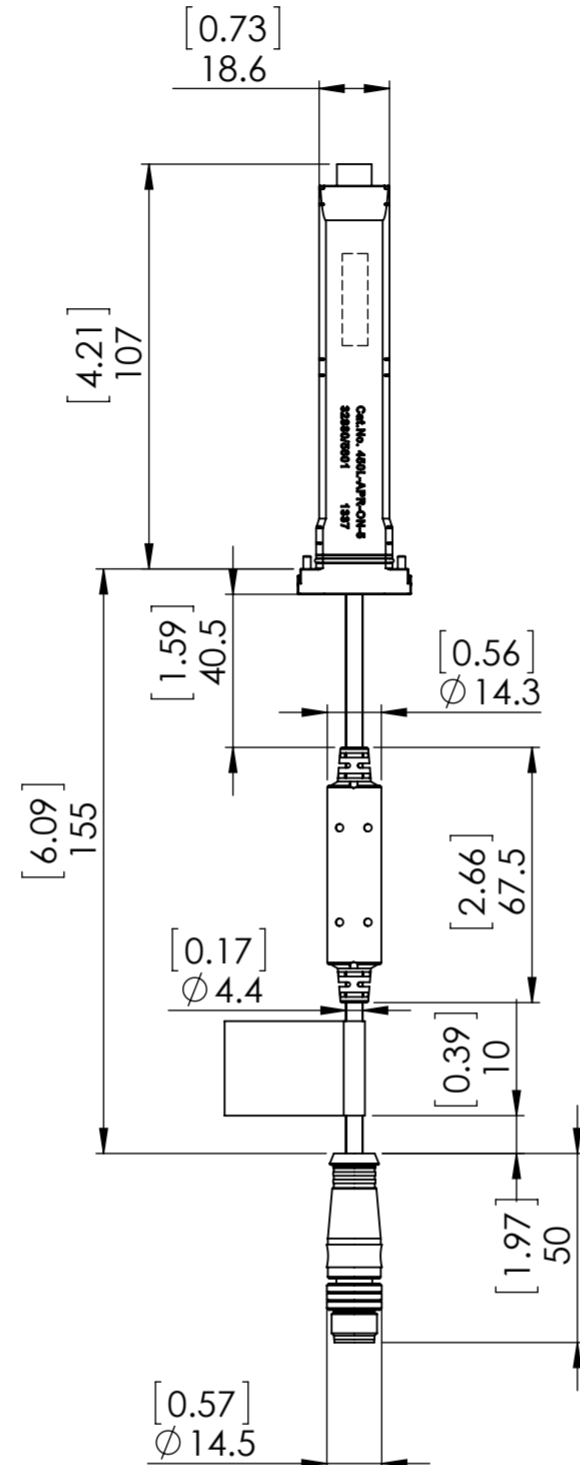


# 450L Plug-In products (See Table):

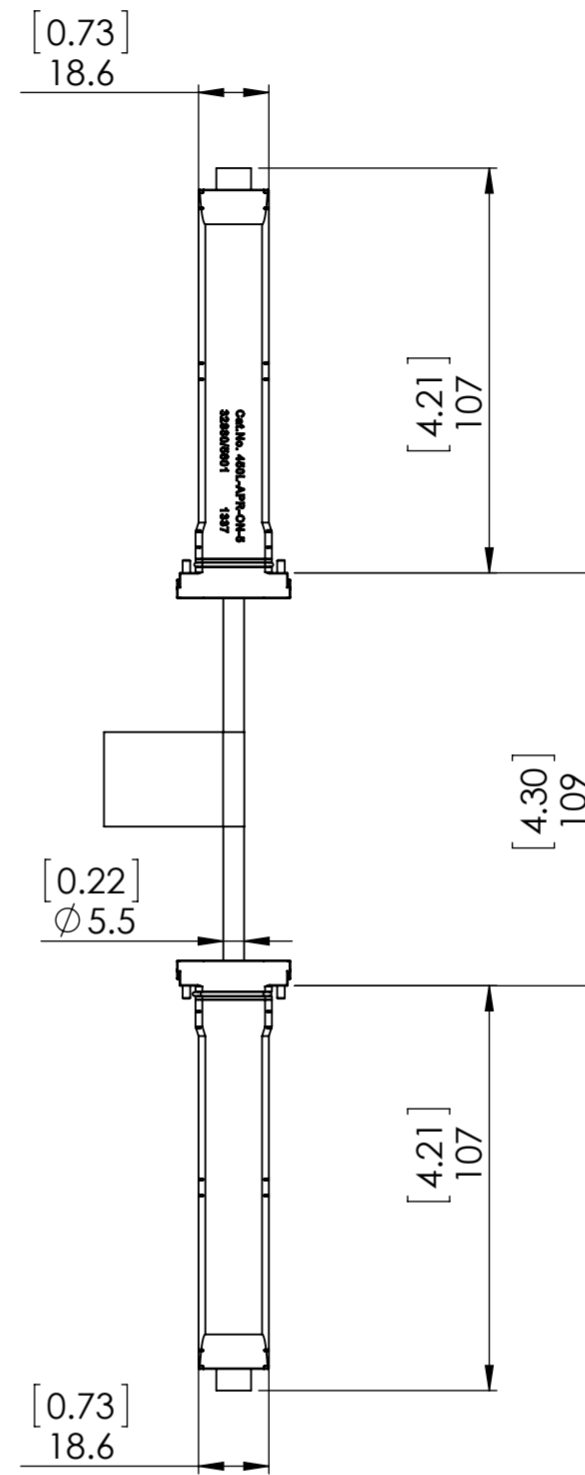
1.)



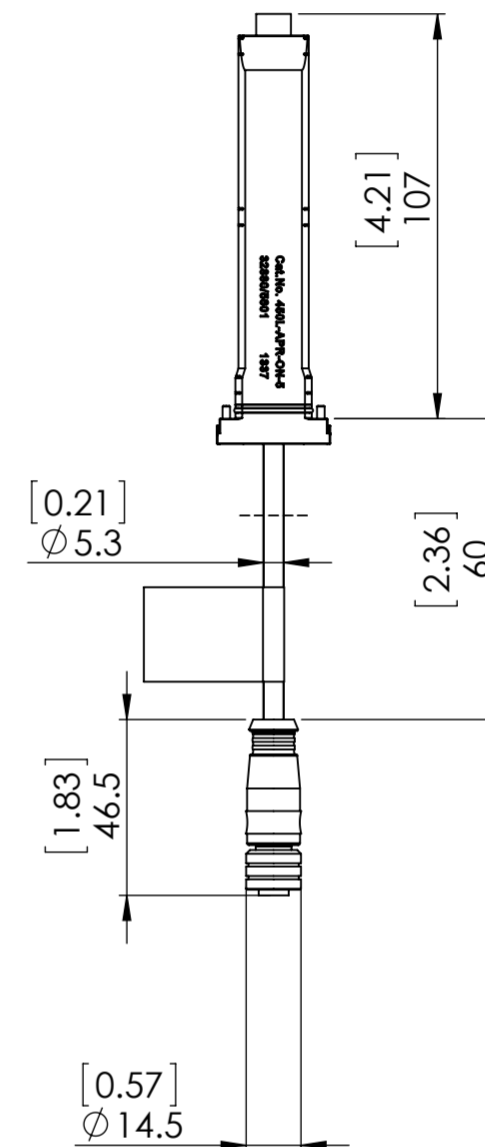
2.)



3.)



4.)



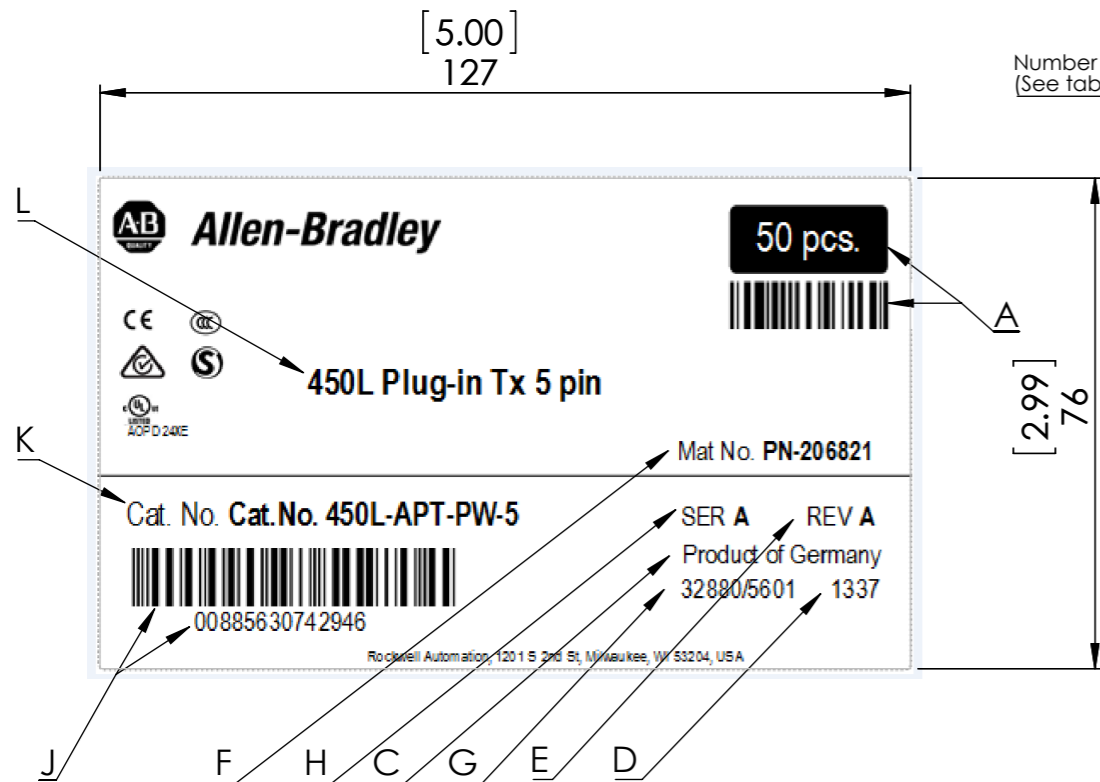
CATALOG NUMBER	SAP NUMBER MATERIAL MASTER	COAST PART NUMBER	PART NAME	SERIES	REVISION	PRODUCT PACKAGING (PAGE 3)	PRODUCT DIMENSIONS (PAGE 1)	NUMBER OF DIP- SWITCHES	NET WEIGHT / GROSS WEIGHT	CERTIFICATION MARKS
450L-APT-PW-5	PN-206821	995-600 080	450L Plug-in Tx 5 pin	A	A	A.)	2.)	0	65g	CE, cULus, RCM
450L-APT-PW-8	PN-206825	995-600 081	450L Plug-in Tx 8 pin	A	A	A.)	2.)	0	65g	CE, cULus, RCM
450L-APR-ON-5	PN-206826	995-600 082	450L Plug-in Rx ON/OFF 5 pin	A	A	A.)	2.)	4	65g	CE, cULus, RCM
450L-APR-ED-8	PN-206827	995-600 083	450L Plug-in Rx EDM 8 pin	A	A	A.)	2.)	8	65g	CE, cULus, RCM
450L-APR-BL-5	PN-304572	995-600 084	450L Plug-in Rx Blanking 5 pin	A	A	A.)	2.)	8	65g	CE, cULus, RCM
450L-APR-MU-8	PN-206829	995-600 085	450L Plug-in Rx Muting 8 pin	A	A	A.)	2.)	12	65g	CE, cULus, RCM
450L-APU-UN-8	PN-206830	995-600 086	450L Plug-in Universal 8 pin	A	A	A.)	2.)	12	65g	CE, cULus, RCM
450L-APC-DL-0	PN-206831	995-600 087	450L Plug-in Direct Cascading	A	A	C.)	3.)	0	42g	CE, cULus, RCM
450L-APC-ELC	PN-206832	995-600 088	450L Plug-in Extended Cascading	A	A	D.)	1.)	0	76g	CE, cULus, RCM
450L-APC-IO-8	PN-206833	995-600 090	450L Plug-in Cascading I/O 8 pin	A	A	B.)	4.)	0	38g	CE, cULus, RCM

All dimensions:  
mm [inch]

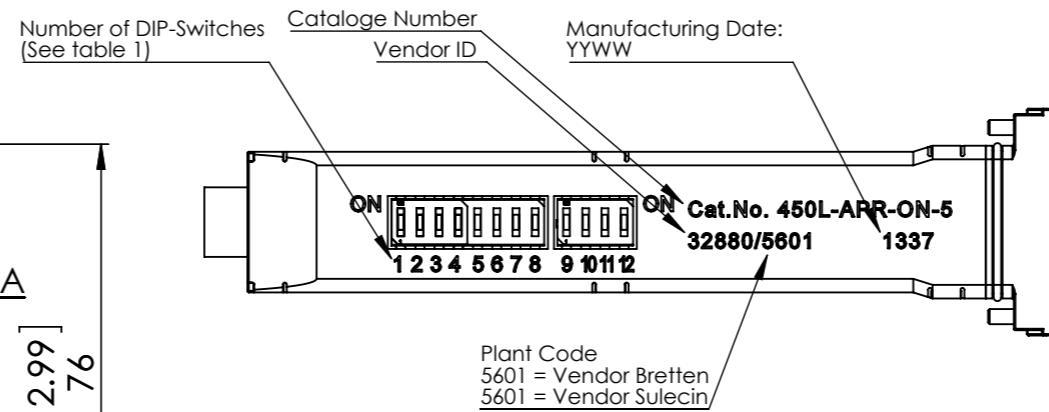
Material	Release No.	3	[R] Teile müssen der Rockwell Spezifikation 970-20-01 entsprechen.	
Surface	Change No.	E3	[R] Parts must confirm to Rockwell environmental specification 970-20-01.	
Colour	Change Date	10.05.2016	Changed by JSA	
CTQ Classification table	Review process		Standard tolerance	
	Designed	CHA	27.05.2014	-
[P] =Performance, [F] =Fit, [A] =Assembly, [R] =Strict conformance	Checked	CLO	17.05.2016	Material Master
	Approved	HAR	18.05.2016	See Table
	Page	1/4	DIR: [Symbol]	
Part Name	Scale	1:2	DIN A2	10001073912
450L Plug-in Tx 5 pin	Part No.	995-600 080		<b>Rockwell Automation</b>

Confidential and proprietary information. This document contains confidential and proprietary information of Rockwell Automation, inc. and may not be used, copied or disclosed to others, except with the authorized written permission of Rockwell Automation, inc.

### Artwork over packaging label:



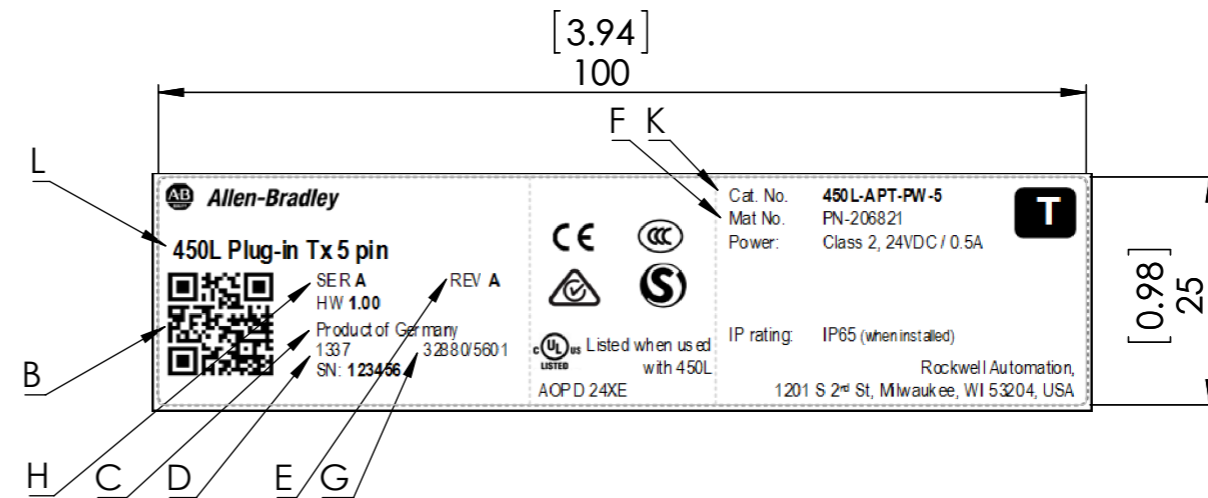
### Marking Detail :



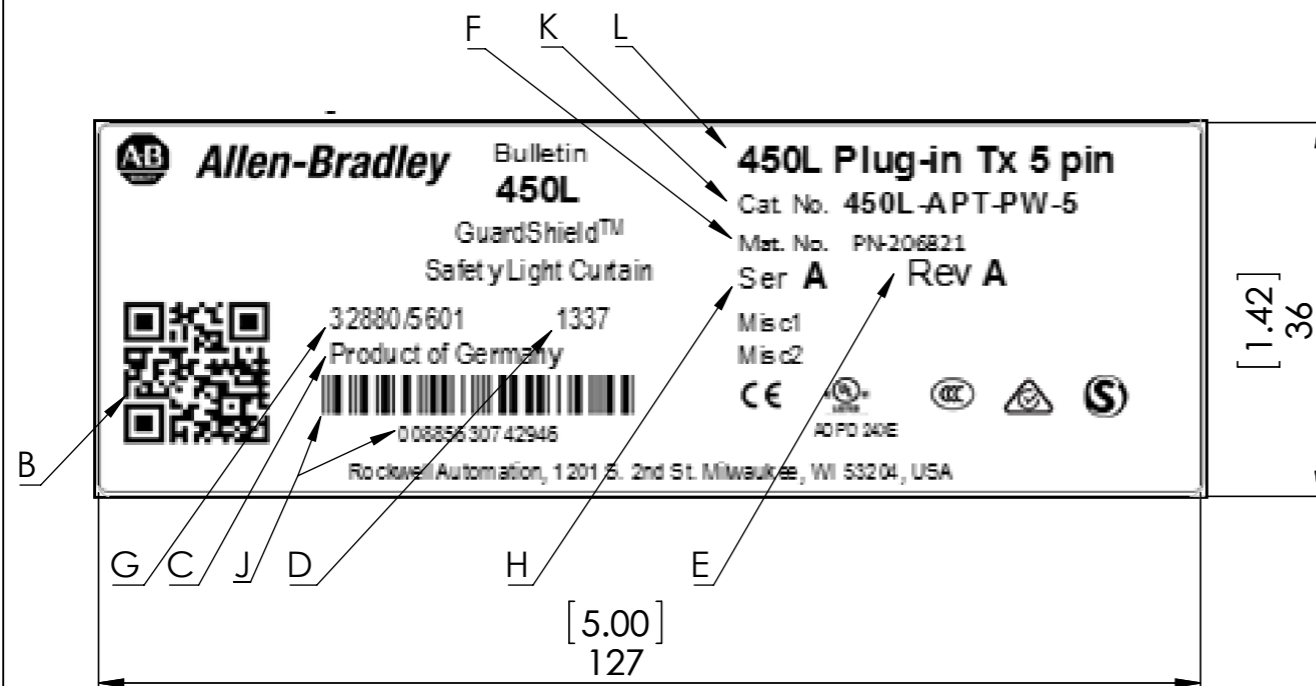
### DECLARATION OF LETTERS

A	Qty barcode: EAN128 with AI
B	2D QR Code
C	Country of Origin
D	Manufacturing date YYWW
E	Revision Number
F	SAP Number Material Master
G	Vendor ID (RA WUP)
H	Series Number
J	EAN/UPC
K	Catalog Number
L	Part Name

### Artwork Product (flag) label :



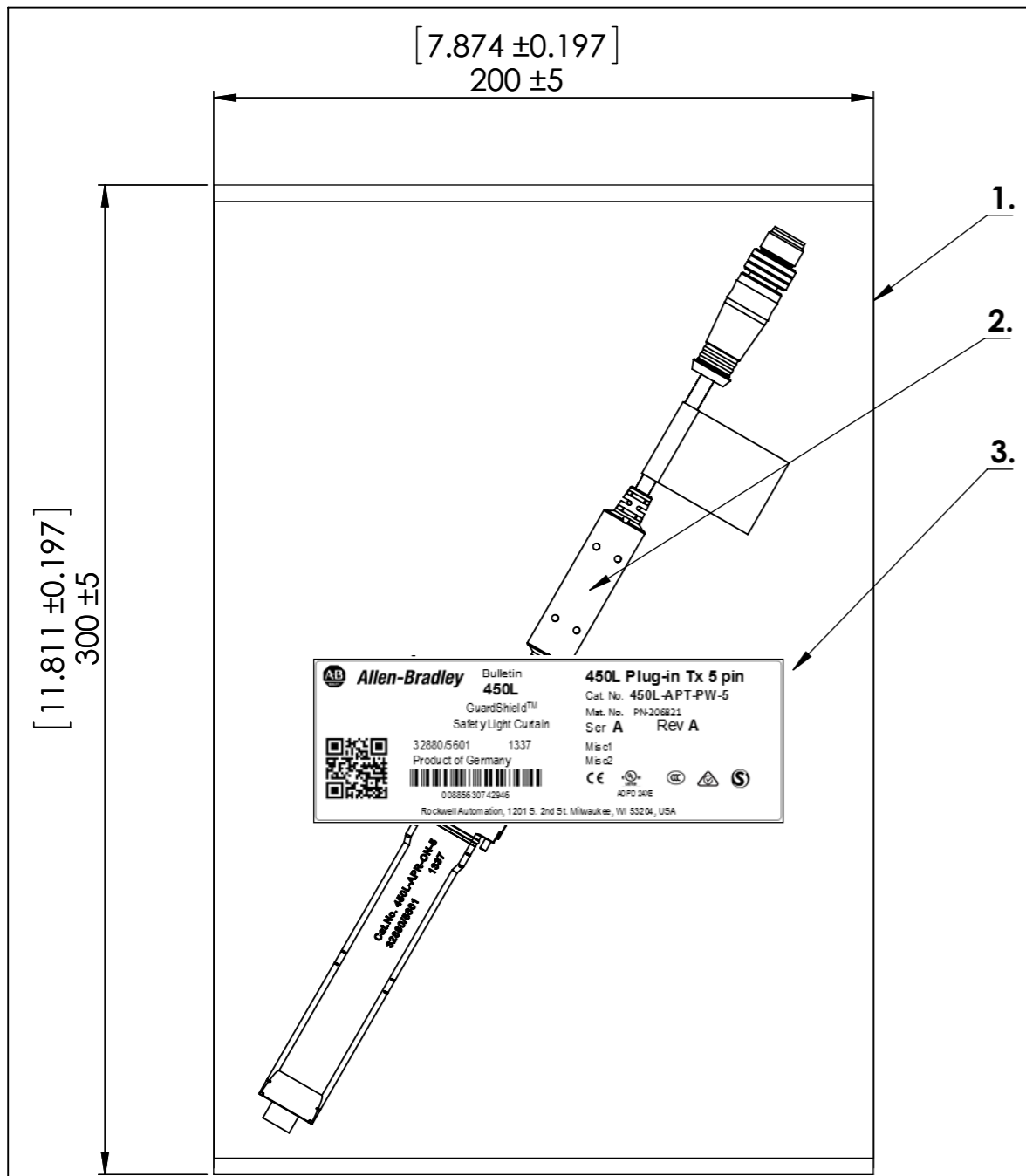
### Artwork Bag label :



All dimensions: mm [inch]

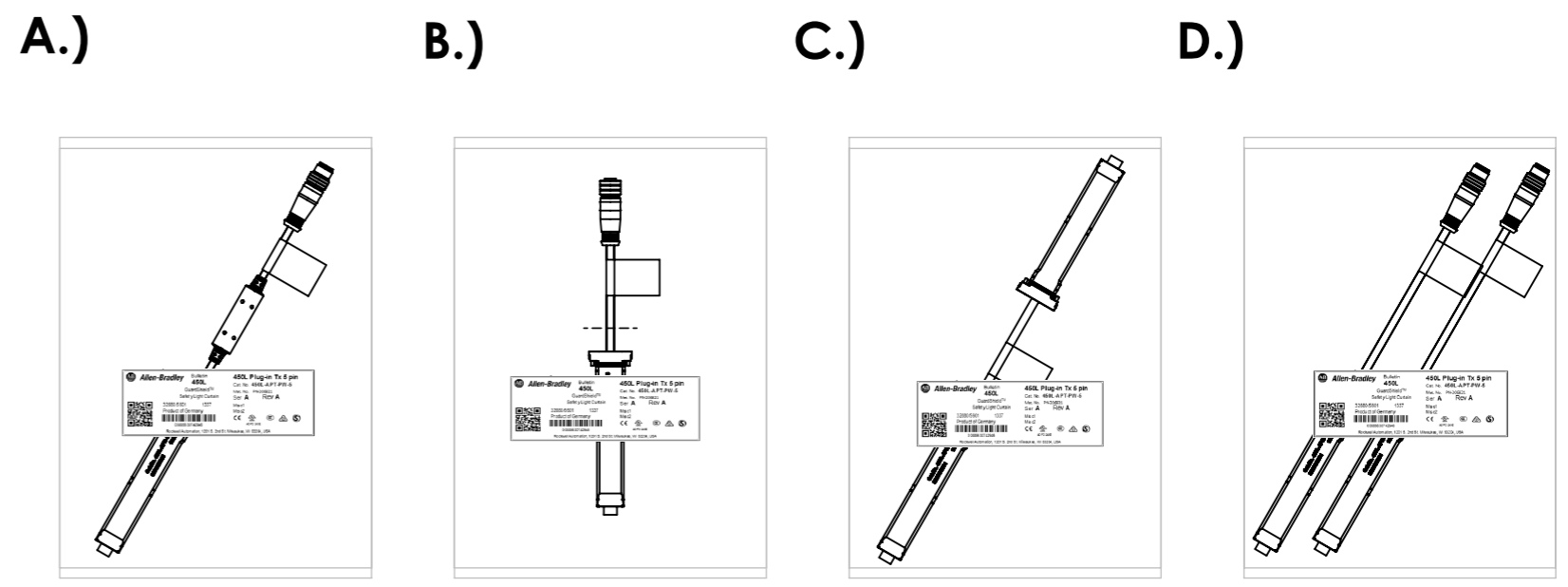
**Attention:**  
 Artworks shows all possible fields/data (see page1).  
 Printed labels might show less fields/data (see page1).

Material	Release No.	3	(R) Teile müssen der Rockwell Spezifikation 970-20-01 entsprechen. (R) Parts must confirm to Rockwell environmental specification 970-20-01.
-	Change No.	E3	
Surface	Change Date	10.05.2016	
-	Changed by	JSA	Standard tolerance
Colour	Review process		
-	Designed	CHA 27.05.2014	
CTQ Classification table	Checked	CLO 17.05.2016	Material Master
	Approved	HAR 18.05.2016	See Table
	Page	2/4	DIR:
	Scale	1:2 DIN A3	10001073912
Part Name	Part No.	995-600 080	<b>Rockwell Automation</b>
450L Plug-in Tx 5 pin			Vers.: 02



PACKAGING CONTENT			
NR.	QTY.	COAST NR.	NAME
1	1	995-300 009	ESD-Bag_300*200
2	1	See table	See table
3	0	995-300 018	Et_Bag Plug-in Template
4	1	995-300 024	Label white paper 127x 36mm

**450L Plug-In product Packaging :**



**Bag:**  
Material: Antistatic  
Color: Blue/transparent

PART NUMBER	PART NAME	Part No.: 995-600 080	Cat. No.: 450L-APT-PW-	Part No.: 995-600 081	Cat. No.: 450L-APT-PW-	Part No.: 995-600 082	Cat. No.: 450L-APR-ON-	Part No.: 995-600 083	Cat. No.: 450L-APR-ED-8	Part No.: 995-600 084	Cat. No.: 450L-APR-BL-5	Part No.: 995-600 085	Cat. No.: 450L-APR-MU-	Part No.: 995-600 086	Cat. No.: 450L-APU-UN-	Part No.: 995-600 087	Cat. No.: 450L-APC-DL-0	Part No.: 995-600 088	Cat. No.: 450L-APC-ELC	Part No.: 995-600 090	Cat. No.: 450L-APC-IO-8
995-500 080	Plug-in_M12-5m_TX-5_np	1																			
995-500 081	Plug-in_M12-8m_TX-8_np		1																		
995-500 082	Plug-in_M12-5m_ON_OFF_np			1																	
995-500 083	Plug-in_M12-8m_EDM_np					1															
995-500 084	Plug-in_M12-5m_BLK_np						1			1											
995-500 085	Plug-in_M12-8m_MUT_BLK_np											1									
995-500 086	Plug-in_M12-8m_UNIV_np												1								
995-500 087	Plug-in_000-8x_CASC-DIR_np															1					
995-500 088	Plug-in_M12-8m_CASC-Bottom_np																	1			
995-500 089	Plug-in_M12-8f_CASC-Top_np																	1			
995-500 090	Plug-in_M12-8f_EXT-I_O_np																			1	

All dimensions:  
mm [inch]

Material	Release No.	3	<input checked="" type="checkbox"/> Teile müssen der Rockwell Spezifikation 970-20-01 entsprechen. <input checked="" type="checkbox"/> Parts must confirm to Rockwell environmental specification 970-20-01.	
-	Change No.	E3		
Surface	Change Date	10.05.2016	Standard tolerance	
-	Changed by	JSA		
Colour	Review process		Material Master	
-	Designed	CHA 27.05.2014		
CTQ Classification table	Checked	CLO 17.05.2016	See Table	
<input checked="" type="checkbox"/> =Performance, <input checked="" type="checkbox"/> Prüfmasse <input checked="" type="checkbox"/> =Fit, <input checked="" type="checkbox"/> Test dimensions <input checked="" type="checkbox"/> =Assembly <input checked="" type="checkbox"/> =Strict conformance	Approved	HAR 18.05.2016		
	Page	3/4	DIR:	Vers.: 02
	Scale	1:2	DIN A3	
Part Name	Part No.	995-600 080	<b>Rockwell Automation</b>	
450L Plug-in Tx 5 pin				

Confidential and proprietary information. This document contains confidential and proprietary information of Rockwell Automation, inc. and may not be used, copied or disclosed to others, except with the authorized written permission of Rockwell Automation, inc.

## Change History (ECR)

VERSION NO.	RELEASE NO.	CHANGE NO.	CHANGE DATE	CHANGED BY	SHORT DESCRIPTION OF CHANGE
00	00	E1	27.05.2014	CHA	Initial Drawing
01	1	E2	22.10.2015	NHI	Added Plug-in 995-500 091,092,095,096 to the table
02	2	E3	10.05.2016	JSA	Overwork of page1;added page 2 (Labeling) and page 3 (Packaging)

Material	Release No.	3	<input checked="" type="checkbox"/> Teile müssen der Rockwell Spezifikation 970-20-01 entsprechen. <input checked="" type="checkbox"/> Parts must confirm to Rockwell environmental specification 970-20-01.	
-	Change No.	E3		
Surface	Change Date	10.05.2016	<input checked="" type="checkbox"/> Parts must confirm to Rockwell environmental specification 970-20-01.	
-	Changed by	JSA		
Colour	Review process		Standard tolerance	
-	Designed	CHA 27.05.2014	-	
CTQ Classification table	Checked	CLO 17.05.2016	Material Master	
<input checked="" type="checkbox"/> =Performance, <input checked="" type="checkbox"/> Prüfmasse <input checked="" type="checkbox"/> =Fit, <input checked="" type="checkbox"/> Test dimensions <input checked="" type="checkbox"/> =Assembly <input checked="" type="checkbox"/> =Strict conformance	Approved	HAR 18.05.2016	See Table	
	Page	4/4	DIR:	Vers.:
	Scale	1:2	DIN A3	10001073912
Part Name	Part No.	<b>Rockwell Automation</b>		
450L Plug-in Tx 5 pin	995-600 080			