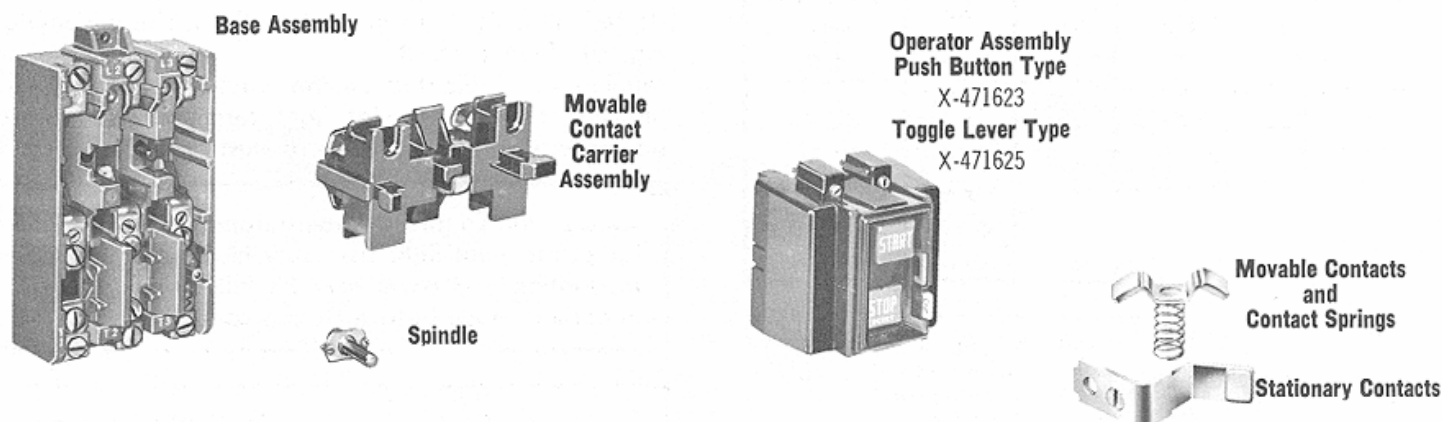


609 & 609T Manual Starting Switches for AC Motors Renewal Parts

Open Style Switches (less enclosure) - 3 Phase and Single Phase Devices

Figure 1



Renewal Parts for Figure 1 (catalog number 609-AOW series F is illustrated)

609 = pushbutton operator 609T = toggle lever operator

Three Phase Devices

Renewal Part Description (not all parts are illustrated in Figure 1)	Catalog Number of Complete Device		Catalog Number of Complete Device	
	609(T)-AOW (Series E-F)	609(T)-BOW Series E-F)	609(T)-AOW (Series G)	609(T)-BOW (Series G)
	Renewal Part Numbers		Renewal Part Numbers	
Base Assembly ①	X-382547	X-382551	Not Available	Not Available
Terminal Clamp Assembly	X-225492	X-225492	X-225492	X-225492
Overload Spindle ②	Not Available	Not Available	Not Used	Not Used
Movable Contact Carrier Assembly ③	X-331099	X-331096	X-331099	X-331096
Complete Contact Kit ④	Z-31911	Z-31913	Z-31911	Z-31913
Operator Assembly: Pushbutton Type	X-471623	X-471623	X-471623	X-471623
Operator Assembly: Toggle Lever Type	X-471625	X-471625	X-471625	X-471625

Single Phase Devices

Renewal Part Description (not all parts are illustrated in Figure 1)	Catalog Number of Complete Device			Catalog Number of Complete Device		
	609(T)-AOX (Series E)	609(T)- BOX (Series E)	609(T)-XOX (Series E)	609(T)-AOX (Series F)	609(T)- BOX (Series F)	609(T)-XOX (Series F)
Base Assembly ①	X-382546	X-382550	X-382554	Not Available	Not Available	Not Available
Terminal Clamp Assembly	X-225492	X-225492	X-225492	X-225492	X-225492	X-225492
Overload Spindle ②	Not Available	Not Available	Not Available	Not Used	Not Used	Not Used
Movable Contact Carrier Assembly ③	X-331099	X-331096	X-331096	X-331099	X-331096	X-331096
Complete Contact Kit ④	Z-31910	Z-31912	Z-31914	Z-31910	Z-31912	Z-31914
Operator Assembly: Pushbutton Type	X-471623	X-471623	X-471623	X-471623	X-471623	X-471623
Operator Assembly: Toggle Lever Type	X-471625	X-471625	X-471625	X-471625	X-471625	X-471625

① Base assembly does not include spindles or contacts.

② Overload spindle not used in all series letters.

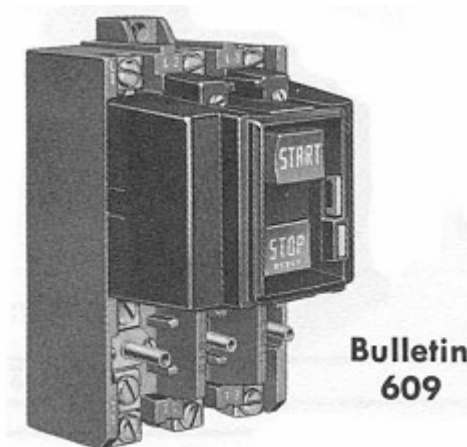
③ Movable contact carrier assembly does not include movable contacts and springs.

④ Includes stationary, movable contacts and springs for entire device.

609 & 609T Manual Starting Switches for AC Motors Renewal Parts

Renewal Parts

Enclosed NEMA Type 1 Bulletin 609 & 609T Manual Starting Switches - 3 Phase and Single Phase Devices



Enclosure Only for 609-AAW (does not include manual starting switch)
Renewal Part Number 40189-806-01

Manual Starting Switch – 609-AOW

609 = pushbutton operator 609T = toggle lever operator

Renewal Part Description	Catalog Number of Complete Device 609(T)-AAW or 609(T)-BAW		Catalog Number of Complete Device 609(T)-AAX or 609(T)-BAX or 609(T)-XAX	
	Series F-G	Series H	Series F-G	Series H
	Renewal Part Numbers		Renewal Part Numbers	
Enclosure (base and cover assemblies)	40189-806-01 ①	40189-806-01	40189-806-01 ①	40189-806-01
Enclosure Base Only	Not Available	Not Available	Not Available	Not Available
Enclosure Cover Only	Not Available	40189-808-01	Not Available	40189-808-01

① This part number is larger than the enclosure used on the original devices.

Manual Starting Switches (less enclosure)



Enclosed Switch Cat. No.	Renewal Part Number for Manual Switch less Enclosure
609(T)-AAW	609(T)-AOW
609(T)-AAX	609(T)-AOX
609(T)-BAW	609(T)-BOW
609(T)-BAX	609(T)-BOX
609(T)-XAX	609(T)-XOX

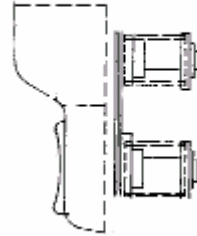
Open Type Bulletin 609U and 609TU switches can replace the Open Type Bulletin 609 switches in Types 1 and 3R/12 enclosures of the latest construction without any field modification of the enclosure.

Knowledgebase technotes can be found at <http://support.rockwellautomation.com/>

609 & 609T Manual Starting Switches for AC Motors Renewal Parts

Renewal Parts

Enclosed NEMA 12 Bulletin 609 Manual Starting Switches - 3 Phase and Single Phase Devices



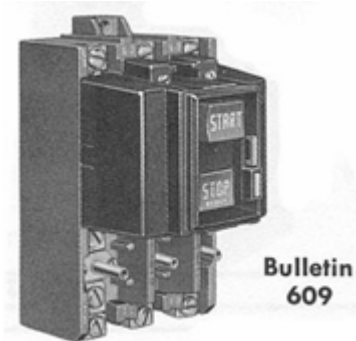
Enclosure Only for 609-AJW (does not include manual starting switch)
Renewal Part Number 40189-807-01

Cover Pushbutton Assembly
Renewal Part Number 40189-062-51

Renewal Part Description	Catalog Number of Complete Device 609-AJW or 609-BJW		Catalog Number of Complete Device 609-AJX or 609-BJX or 609-XJX	
	Series E-H	Series J-K	Series F-H	Series J-K
	Renewal Parts		Renewal Parts	
Enclosure (base and cover assemblies)	40189-807-01 ①	40189-807-01	40189-807-01 ①	40189-807-01
Enclosure Base Only	Not Available	Not Available	Not Available	Not Available
Enclosure Cover with Cover Pushbuttons	Not Available	40189-809-01	Not Available	40189-809-01
Cover Pushbutton Assembly Only	40189-062-51	40189-062-51	40189-062-51	40189-062-51

① This part number is larger than the enclosure used on the original devices.

Manual Starting Switch (less enclosure)



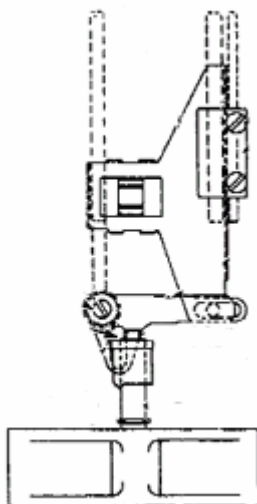
Enclosed Switch Cat. No.	Renewal Part Number for Manual Switch less Enclosure
609-AJW	609-AOW
609-AJX	609-AOX
609-BJW	609-BOW
609-BJX	609-BOX
609-XJX	609-XOX

Open Type Bulletin 609U and 609TU switches can replace the Open Type Bulletin 609 switches in Types 1 and 3R/12 enclosures of the latest construction without any field modification of the enclosure.

609 & 609T Manual Starting Switches for AC Motors Renewal Parts

Renewal Parts

Enclosed NEMA 4X Bulletin 609 Manual Starting Switches - 3 Phase and Single Phase Devices



Enclosure Only for Bulletin 609 Type 4-4X
(renewal part does not include the switch)
Renewal Part Number 40189-803-01

Cover Operating Mechanism
Renewal Part Number 40189-810-01

Conduit Hub
1490-N9

Grounding Adapter
1490-N20

Renewal Part Description	Catalog Number of Device (3 phase) 609-ACW (Sz 0) or 609-BCW (Sz 1)		Catalog Number of Complete Device (1 Ph) 609-ACX (Sz 0), 609-BCX (Sz 1), 609-XCX (Sz 1P)	
	Series G-J	Series K	Series F-H	Series J
Enclosure (base and cover assemblies)	40189-802-01 ①	40189-802-01	40189-802-01 ①	40189-802-01
Enclosure Base Only	Not Available	Not Available	Not Available	Not Available
Encl. Cover w/ Cover Operating Mech - Sz 0	X-474310	609-ACW-COV	X-474310 (for sizes 0, 1, 1P)	609-ACX-COV (for sizes 0, 1, 1P)
Encl. Cover w/ Cover Operating Mech - Sz 1	X-474310	609-BCW-COV		
Operating Mechanism used in Cover	40189-805-01	40189-803-01	40189-805-01	40189-803-01
Grounding Adapter in Base	1490-N20	1490-N20	1490-N20	1490-N20
Conduit Hub in Base	1490-N9	1490-N9	1490-N9	1490-N9

① This part number is larger than the enclosure used on the original devices.

Manual Starting Switch (less enclosure)

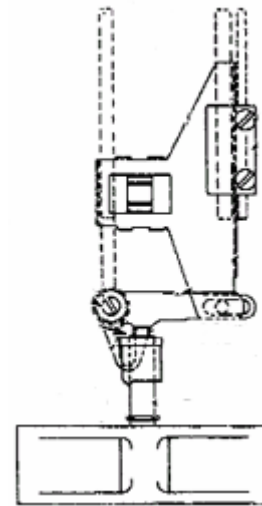
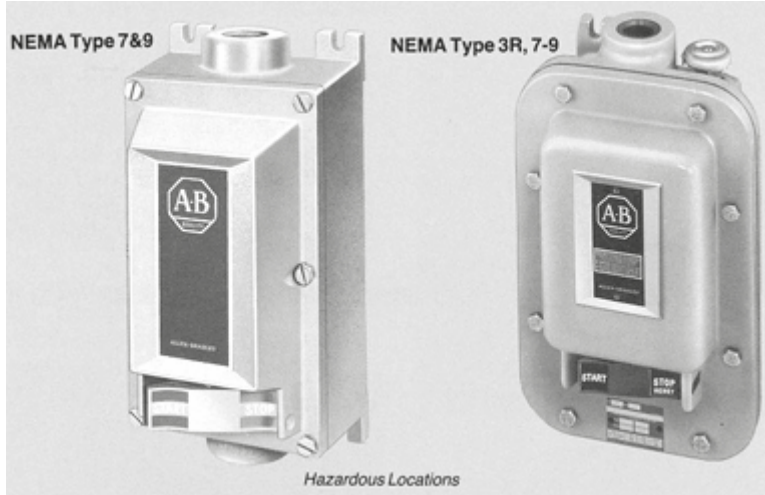


Enclosed Switch Cat. No.	Renewal Part Number for Manual Switch less Enclosure
609-ACW	609T-AOW
609-ACX	609T-AOX
609-BCW	609T-BOW
609-BCX	609T-BOX
609-XCX	609T-XOX

609 & 609T Manual Starting Switches for AC Motors Renewal Parts

Renewal Parts

Enclosed NEMA 7&9 and NEMA 3R, 7&9 Bulletin 609 Manual Starting Switches – 3 Phase and Single Phase Devices



Enclosure Only for Bulletin 609 Type 7&9
(renewal part does not include switch)
Renewal Part Number X-474312

Enclosure Only for Bulletin 609 Type 3R, 7&9
(renewal part does not include the switch)
Renewal Part Number 40189-800-01

Cover Operating Mechanism
(for type 7&9 and 3R, 7&9 switches)
Renewal Part Number 40189-801-01

Renewal Part Description	Catalog Number of Complete Device 609-AEW, 609-AEX (Sz 0) or 609-BEW, 609-BEX (Sz 1) or 609-XEX (Sz 1P) Series F - H Renewal Part Numbers	Catalog Number of Complete Device 609-AHW, 609-AHX (for Sz 0) or 609-BHW, 609-BHX (Sz 1) or 609-XHX (for Sz 1P) Series A Renewal Part Numbers
Enclosure (includes base and cover assemblies)	X-474312	40189-800-01 ①
Enclosure Base Only	Not Available	Not Available
Enclosure Cover with Cover Operating Mechanism	609-AEW-COV (for Sz 0) 609-BEW-COV (for Sz 1) 609-AEX-COV (for Sz 1P)	609-BHW-COV (for Sizes 0, 1 and 1P)
Operating Mechanism used in Cover	40189-804-01	40189-801-01

① Does not include drain. Order separately as 1401-N2.

Manual Starting Switch (less enclosure)



Enclosed Switch Cat. No.	Renewal Part Number for Manual Switch less Enclosure
609-AEW	609T-AOW
609-AHW	609T-AOW
609-BEW	609T-BOW
609-BHW	609T-BOW
609-XEX	609T-XOX
609-XHX	609T-XOX

Important User Information

Because of the variety of uses for the products described in this publication, those responsible for the application and use of this control equipment must satisfy themselves that all necessary steps have been taken to assure that each application and use meets all performance and safety requirements, including any applicable laws, regulations, codes and standards.

The illustrations, charts, sample programs and layout examples shown in this guide are intended solely for purposes of example. Since there are many variables and requirements associated with any particular installation, Rockwell Automation does not assume responsibility or liability (to include intellectual property liability) for actual use based upon the examples shown in this publication.

Allen-Bradley publication SGI-1.1, *Safety Guidelines for the Application, Installation and Maintenance of Solid-State Control* (available from your local Allen-Bradley office), describes some important differences between solid-state equipment and electromechanical devices that should be taken into consideration when applying products such as those described in this publication.

Reproduction of the contents of this copyrighted publication, in whole or part, without written permission of Rockwell Automation, is prohibited.

Throughout this document we use notes to make you aware of safety considerations:

ATTENTION

Identifies information about practices or circumstances that can lead to personal injury or death, property damage or economic loss



IMPORTANT

Identifies information that is critical for successful application and understanding of the product.

Use only replacement parts and devices recommended by Rockwell Automation to maintain the integrity of the equipment. It is the user's responsibility to ensure that the renewal part number selected is properly matched to the model, series and revision level of the equipment being serviced.

ATTENTION

Servicing energized Industrial Control Equipment can be hazardous. Severe injury or death can result from electrical shock, burn, or unintended actuation of controlled equipment. Recommended practice is to disconnect and lockout control equipment from power sources, and release stored energy, if present.



Refer to **National Fire Protection Association Standard No. NFPA70E, Part 2 and (as applicable) OSHA rules for Control of Hazardous Energy Sources (Lockout/Tagout) and OSHA Electrical Safety Related Work Practices** for safety related work practices, including procedural requirements for lockout/tagout, and appropriate work practices, personnel qualifications and training requirements where it is not feasible to de-energize and lockout or tagout electric circuits and equipment before working on or near exposed circuit parts.

ROCKWELL DISCLAIMS ALL WARRANTIES WHETHER EXPRESSED OR IMPLIED IN RESPECT TO THE INFORMATION (INCLUDING SOFTWARE) PROVIDED HEREBY, INCLUDING THE IMPLIED WARRANTIES OF FITNESS FOR A PARTICULAR PURPOSE, MERCHANTABILITY, AND NON-INFRINGEMENT. Note that certain jurisdictions do not countenance the exclusion of implied warranties; thus, this disclaimer may not apply to you.