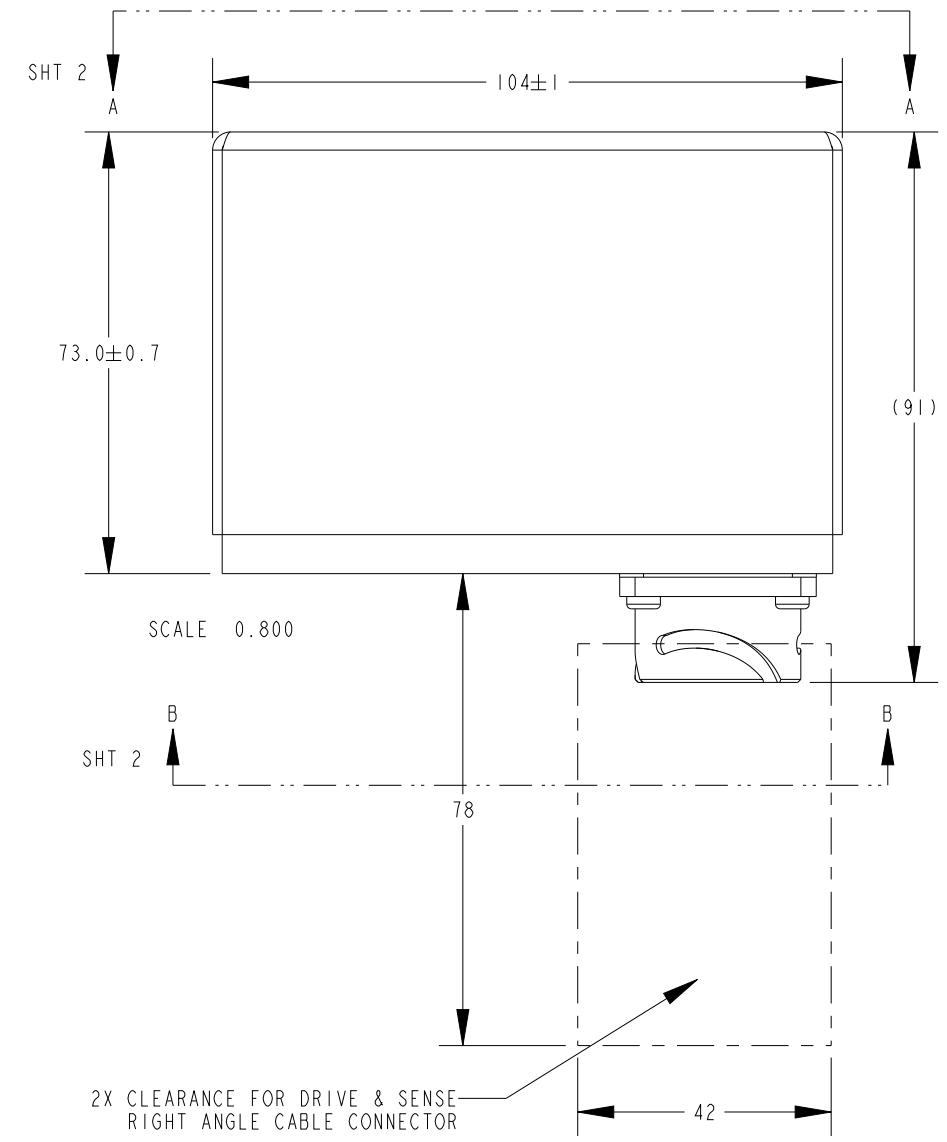
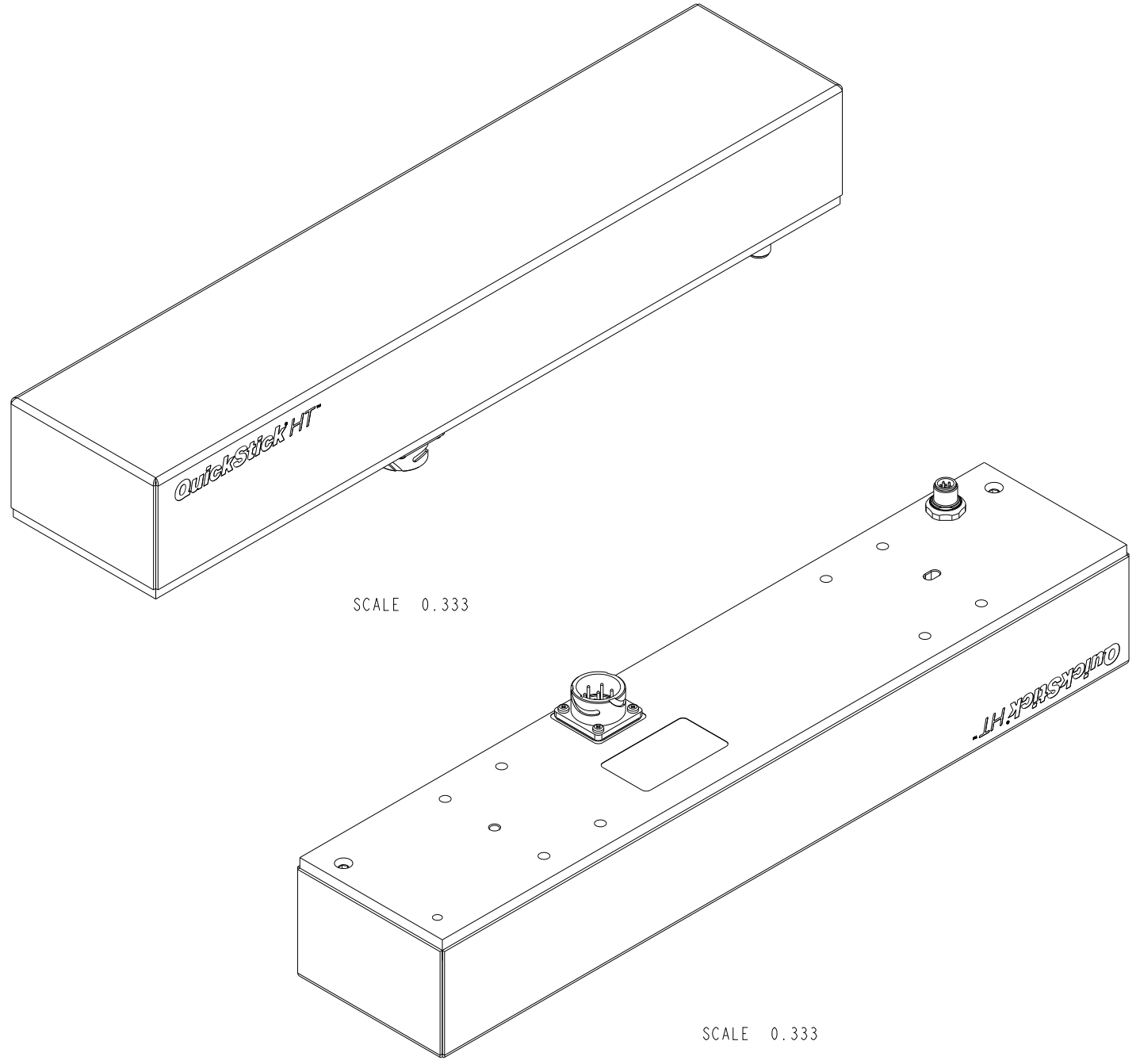


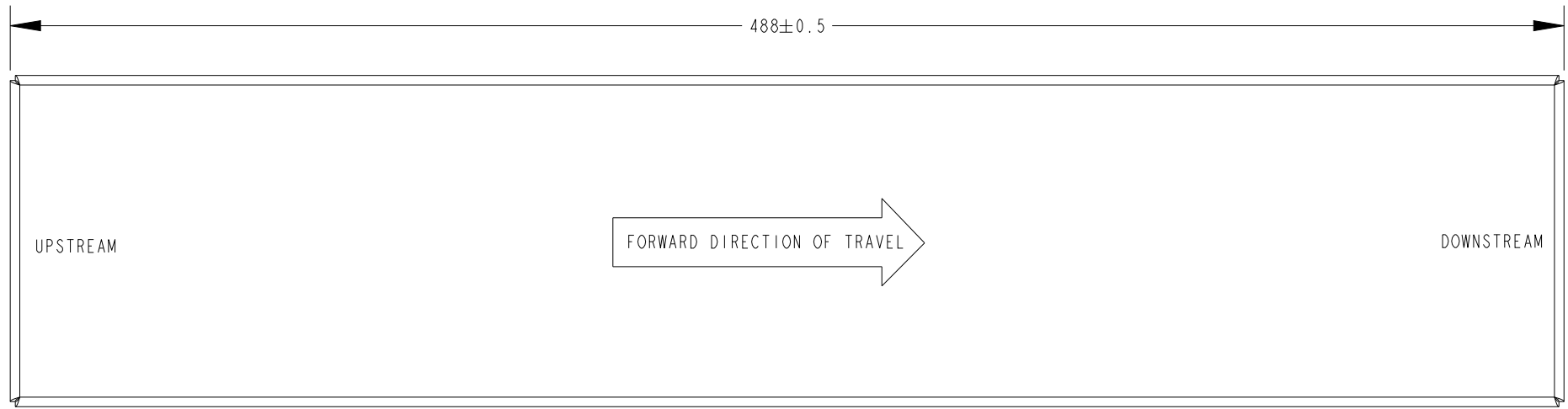
CRITICAL TO QUALITY CLASSIFICATION TABLE					
P=PERFORMANCE, F=FIT, A=ASSEMBLY					
X=IDENTIFIES APPLICABLE CLASSIFICATION(S)					
◇=ENGINEERING AND/OR MANUFACTURING REQUIREMENT					
Ⓡ=REGULATORY REQUIREMENT-CONFORMANCE IS MANDATORY					
COMMENTS	DRAWING ZONE	P	F	A	R
ROHS	G1-HI				X



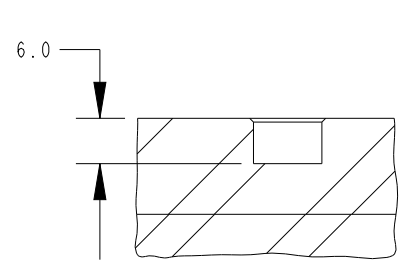
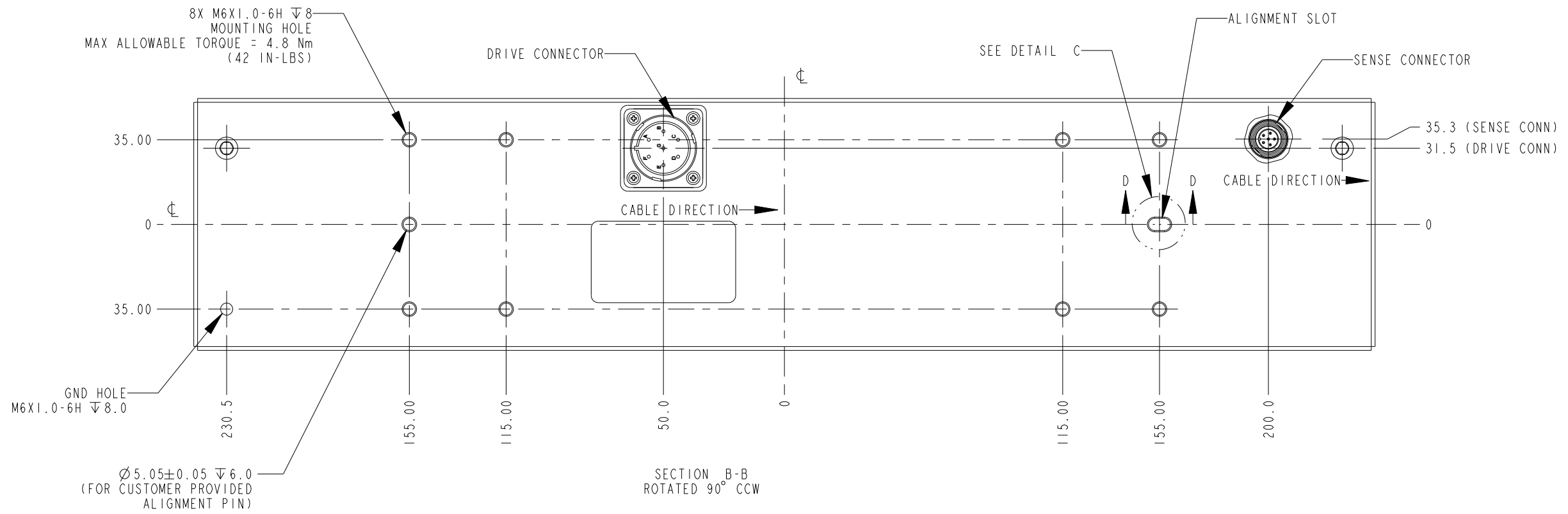
- NOTES:
1. ALL DIMENSIONS ARE IN MM
 2. BREAK ALL SHARP EDGES
 3. CLEAN AND DEBURR
 4. USE MIN BEND RADII

MUST COMPLY WITH ROCKWELL AUTOMATION ENVIRONMENTAL SPECIFICATION 970-20-01

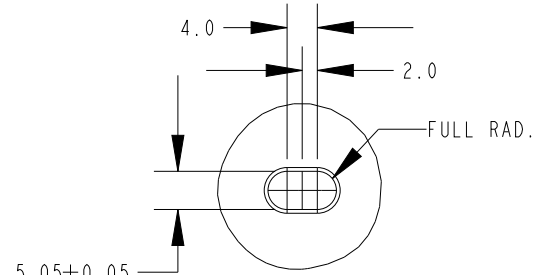
D. LAW	1:2	XXXXX-XXX-XX	1.6	-	10005188741	700-1483-01
ENGINEER	SCALE	WORKMANSHIP STANDARDS	FINISH	MATERIAL	MODEL/DIR NO.	PART/MMR NUMBER
DIMENSION UNITS-mm		ALL UNDIMENSIONED GEOMETRIES ARE CONTROLLED BY THE CAD MODEL. IN CASE OF DIMENSION DISCREPANCY, CAD MODEL OVERRIDES.		Rockwell Automation		CONFIDENTIAL AND PROPRIETARY INFORMATION. THIS DOCUMENT CONTAINS CONFIDENTIAL AND PROPRIETARY INFORMATION OF ROCKWELL AUTOMATION, INC. AND MAY NOT BE USED, COPIED OR DISCLOSED TO OTHERS, EXCEPT WITH THE AUTHORIZED WRITTEN PERMISSION OF ROCKWELL AUTOMATION, INC.
DIMENSIONS APPLY BEFORE SURFACE TREATMENT.		UNSPECIFIED TOLERANCES ARE AS FOLLOWS: X.XX ±0.13 X.X ±0.25 X. ±0.5 DEG ±0.5° TORQUE ±25%				
THIRD ANGLE PROJECTION				DESCRIPTION		DATE: 2019-10-16
				ICD, MOTOR, 1/2 METER, QSHT2		SHEET 1 OF 2
				CREATED BY: APATELII		CHANGED BY: *****
						SIZE DIR
						B
						701-1483-01
						VER
						05



SECTION A-A
ROTATED 90° CW



SECTION D-D
SCALE 1.000



DETAIL C
SCALE 1.000

		CONFIDENTIAL AND PROPRIETARY INFORMATION. THIS DOCUMENT CONTAINS CONFIDENTIAL AND PROPRIETARY INFORMATION OF ROCKWELL AUTOMATION, INC. AND MAY NOT BE USED, COPIED OR DISCLOSED TO OTHERS, EXCEPT WITH THE AUTHORIZED WRITTEN PERMISSION OF ROCKWELL AUTOMATION, INC.			
		DATE: 2019-10-16	SHEET 2 OF 2		
DESCRIPTION	ICD, MOTOR, 1/2 METER, QSHT2		SIZE	DIR	VER
	CREATED BY: APATELII	CHANGED BY: *****	B	701-1483-01	05