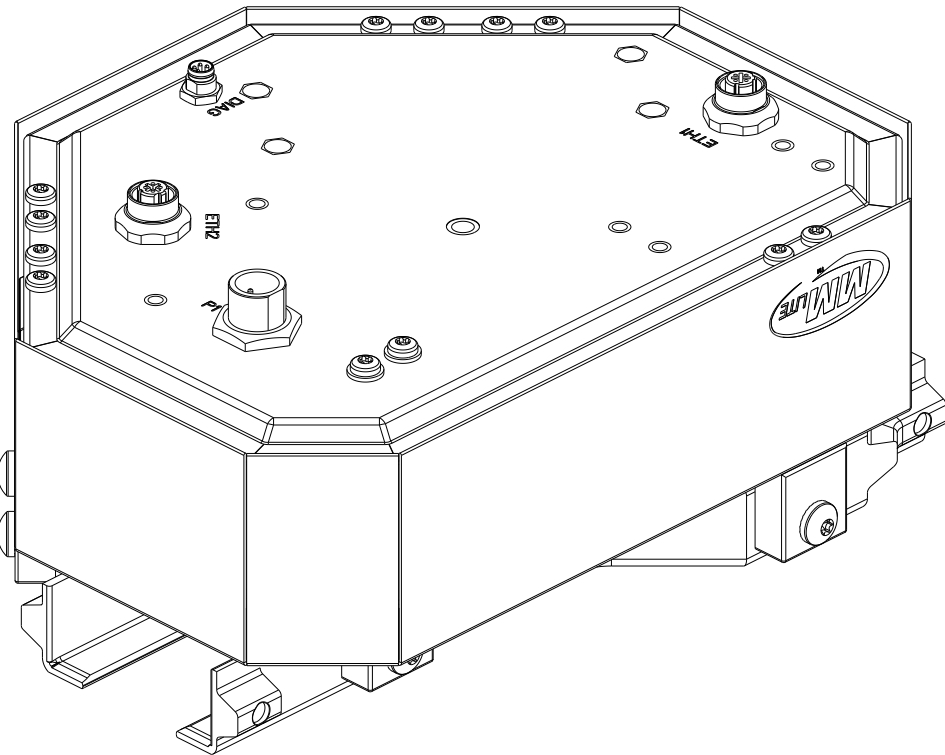
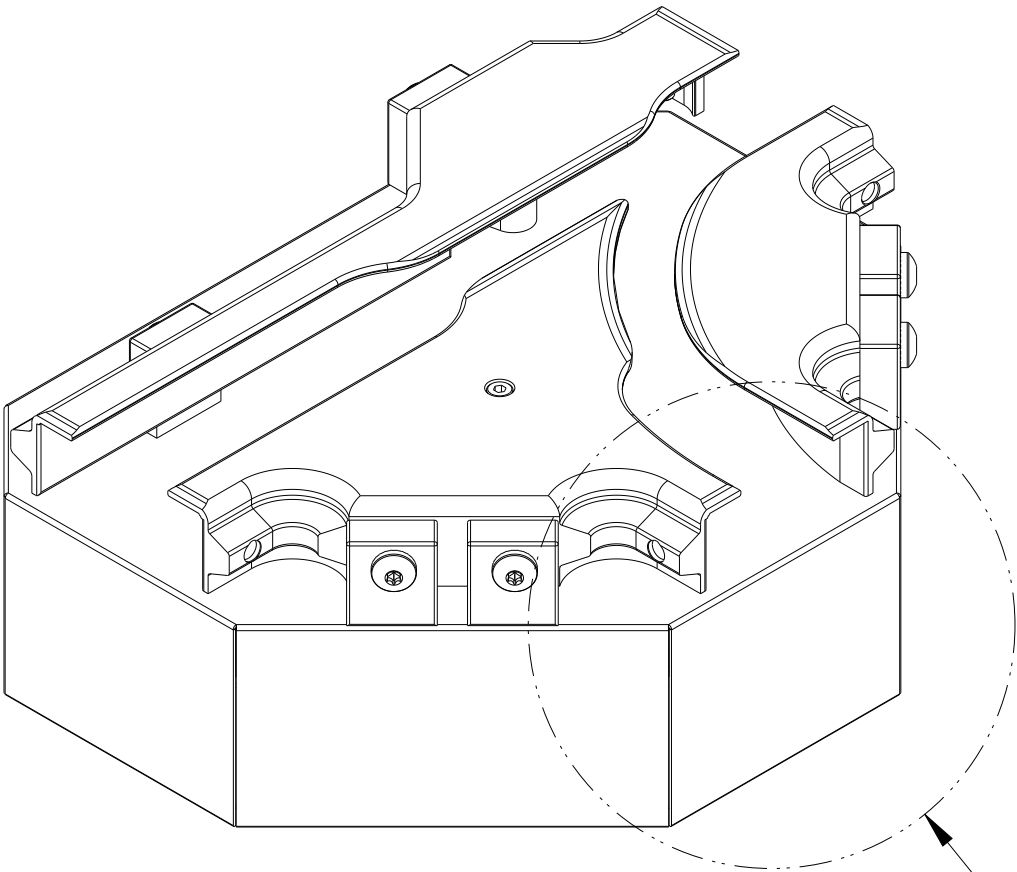
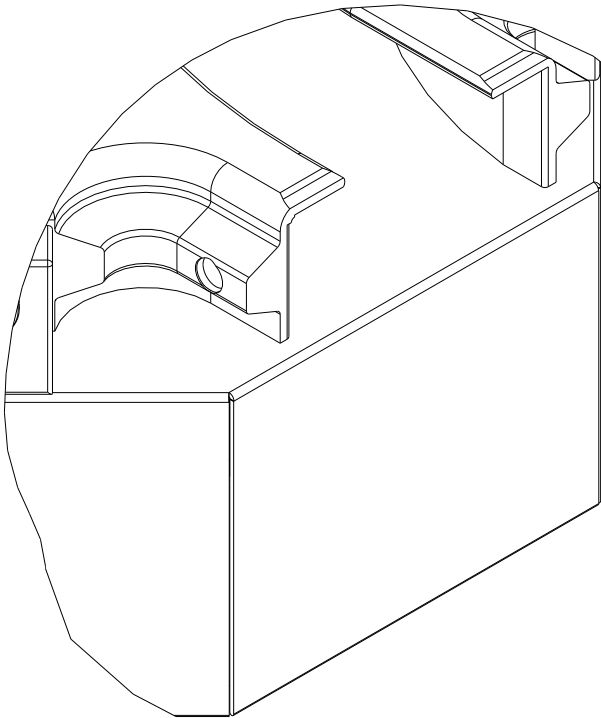


| | | |
|---|-------------|--|
| PART NUMBER SUMMARY FOR DIR NO: 701-1708-80 | | |
| MATERIAL MASTER NO. | 3D DIR | DESCRIPTION |
| 700-1708-80 | 10004608362 | ASSY, MOTOR, SWITCH, LEFT, AL RAILS, G4E, ML |
| 700-1708-81 | 10004608363 | ASSY, MOTOR, SWITCH, LEFT, SS RAILS, G4E, ML |

| CRITICAL TO QUALITY CLASSIFICATION TABLE | | | | | |
|--|--------------|---|---|---|---|
| P=PERFORMANCE, F=FIT, A=ASSEMBLY X=IDENTIFIES APPLICABLE CLASSIFICATION(S) ⬠=ENGINEERING AND/OR MANUFACTURING REQUIREMENT Ⓜ=REGULATORY REQUIREMENT-CONFORMANCE IS MANDATORY | | | | | |
| COMMENTS | DRAWING ZONE | P | F | A | R |
| ROHS | G1-H1 | | | | X |



DETAIL B
SCALE 0.800

SEE DETAIL B

MUST COMPLY WITH ROCKWELL
AUTOMATION ENVIRONMENTAL
SPECIFICATION 970-20-01

- NOTES:
1. ALL DIMENSIONS ARE IN MM
 2. BREAK ALL SHARP EDGES
 3. CLEAN AND DEBURR
 4. USE MIN BEND RADI

| | | | | | | | |
|---|-------|--|--------|-----------------------------------|--|---|-----------------|
| E. GARDNER | 1:2 | XXXXX-XXX-XX | 1.6 | | | 10004608364 | SEE TABLE |
| ENGINEER | SCALE | WORKMANSHIP STANDARDS | FINISH | MATERIAL | | MODEL/DIR NO. | PART/MMR NUMBER |
| <div><div><div><div>DIMENSION UINTS-mm</div><div><div><div><div><div></div></div></div></div><div>DIMENSIONS APPLY BEFORE SURFACE TREATMENT.</div></div></div><div><div>UNSPECIFIED TOLERANCES ARE AS FOLLOWS:</div><div>X.XX ±0.13</div><div>X.X ±0.25</div><div>X. ±0.5</div><div>DEG ±0.5°</div><div>TORQUE ±25%</div></div></div></div> | | ALL UNDIMENSIONED GEOMETRIES ARE CONTROLLED BY THE CAD MODEL. IN CASE OF DIMENSION DISCREPANCY, CAD MODEL OVERRIDES. | | <div>Rockwell Automation</div> | | CONFIDENTIAL AND PROPRIETARY INFORMATION. THIS DOCUMENT CONTAINS CONFIDENTIAL AND PROPRIETARY INFORMATION OF ROCKWELL AUTOMATION, INC. AND MAY NOT BE USED, COPIED OR DISCLOSED TO OTHERS, EXCEPT WITH THE AUTHORIZED WRITTEN PERMISSION OF ROCKWELL AUTOMATION, INC. | |
| <div><div><div><div></div></div><div>THIRD ANGLE PROJECTION</div></div></div> | | DESCRIPTION | | ICD, MOTOR, SWITCH, LEFT, G4E, ML | | DATE:2019-02-13 | SHEET 1 OF 3 |
| CREATED BY:GASALKA | | CHANGED BY:***** | | SIZE B | | DIR 701-1708-80 | VER 01 |

