

12 mm, 18 mm, 22 mm, and 30 mm Indicators

Product Selection

Product Selection, Continued

30 mm Indicators

Color	LED*			Incandescent		Strobe	
	24V AC/DC Cat. No.	120V AC Cat. No.	240V AC Cat. No.	24V AC/DC Cat. No.	120V AC/DC Cat. No.	24V AC/DC Cat. No.	120/240V AC Cat. No.
Amber	800L-30L24A	800L-30L10A	800L-30L20A	800L-30C24A	800L-30C10A	800L-30S24A	800L-30S10A
Blue	800L-30L24B	800L-30L10B	800L-30L20B	800L-30C24B	800L-30C10B	800L-30S24B	800L-30S10B
Clear	800L-30L24C	800L-30L10C	800L-30L20C	800L-30C24C	800L-30C10C	800L-30S24C	800L-30S10C
Green	800L-30L24G	800L-30L10G	800L-30L20G	800L-30C24G	800L-30C10G	800L-30S24G	800L-30S10G
Red	800L-30L24R	800L-30L10R	800L-30L20R	800L-30C24R	800L-30C10R	800L-30S24R	800L-30S10R

* LED color matches lens color specified. White LED supplied for clear selection.

800L - 30 L 24 R
a b c d

Indicator Size		Illumination Type		Voltage		Lens Color	
Code	Description	Code	Description	Code	Description	Code	Description
12	12 mm	C	Incandescent	24	24V AC/DC*	R	Red
18	18 mm*	L	LED*§	10	120V AC	G	Green
22	22.5 mm	S	Xenon strobe*	20	240V AC‡	A	Amber
30	30.5 mm					B	Blue
						C	Clear

* 18 mm indicators are only available with LED or incandescent illumination. For 18 mm devices with 120V incandescent lamps, it is recommended that the lens is changed with lamp replacement.

‡ LED and Xenon strobe lamps are integral to indicators and are not field replaceable. Entire indicator must be replaced upon lamp failure.

‡ Incandescent illumination not available in 240V option. For 240V strobe, order voltage code **10** (Table c) as strobe is rated for both 120V/240V AC.

§ LED color will match lens color specified. White LED supplied for clear lens.

* 12 mm devices are only available with LED illumination (24V DC or 120V AC).

Replacement Parts

Replacement Lens Caps

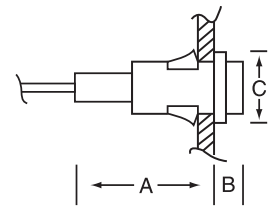
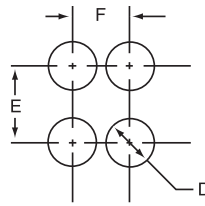
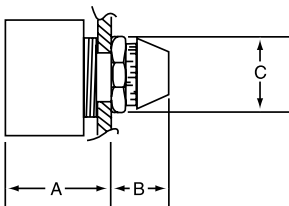
Color	18 mm	22 mm	30 mm
Red	800L-N18R	800L-N22R	800T-N26R
Green	800L-N18G	800L-N22G	800T-N26G
Amber	800L-N18A	800L-N22A	800T-N26A
Blue	800L-N18B	800L-N22B	800T-N26B
Clear	800L-N18C	800L-N22C	800T-N26C

Replacement Lamps

Lamp Type	Voltage	ANSI No.	Cat. No.
Incandescent	24V AC/DC	757	800T-N157
	120V AC/DC	949	800T-N169

➤ LED and Xenon strobe lamps are integral to indicators and are not field replaceable. Entire indicator must be replaced upon lamp failure.

Approximate Dimensions



Indicator	A	B	C	D	E	F
	Inches (mm)					
12 mm	1-3/32 (27.8)	5/16 (7.9)	5/8 (15.8)	1/2 (12.7)	3/4 (19.0)	11/16 (17.5)
18 mm	1-21/64 (33.7)	57/64 (22.6)	1-1/32 (26.2)	3/4 (18.6)	2-9/32 (58.0)	1-1/8 (28.6)
22 mm	1-21/64 (33.7)‡	57/64 (22.6)	1-7/32 (31.0)	15/16 (22.6)	2-9/32 (58.0)	1-8/32 (32.5)
30 mm	1-9/16 (39.7)‡	1-9/64 (29.0)	1-19/32 (40.5)	1-13/64 (30.6)	2-9/32 (58.0)	1-29/32 (48.5)

‡ For devices with strobe illumination, Dimension A for 22 mm is 2-7/8 in. (73 mm) and for 30 mm devices it is 3-1/8 in. (79 mm).