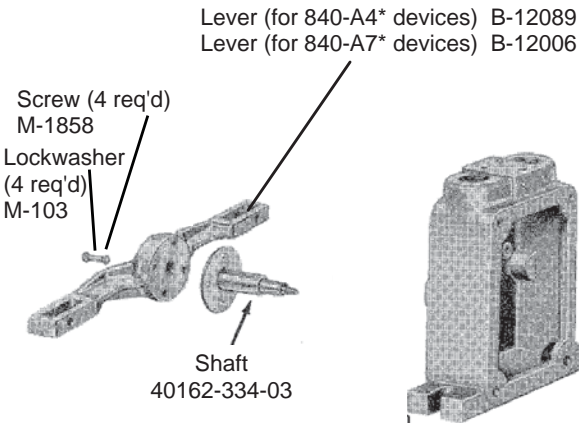
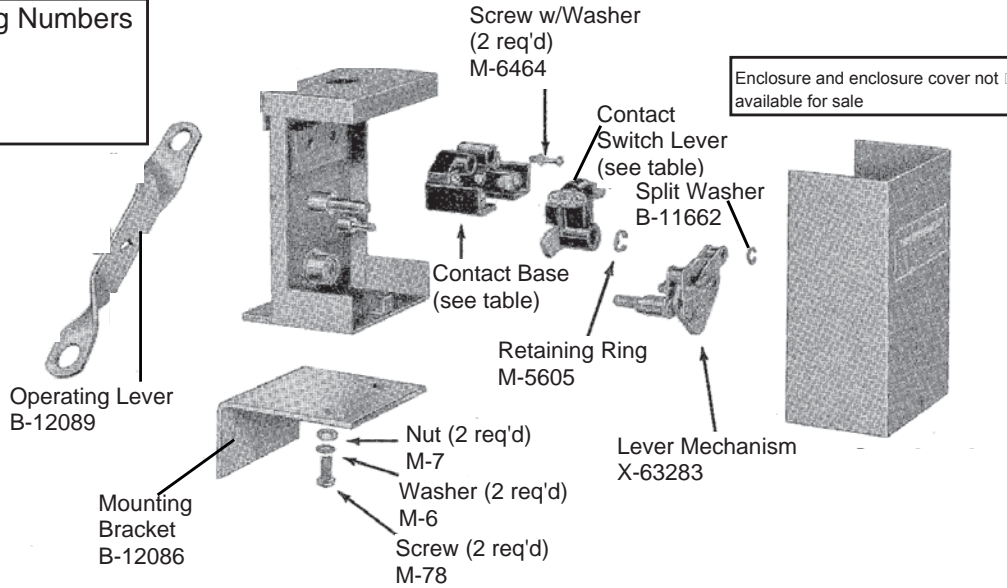




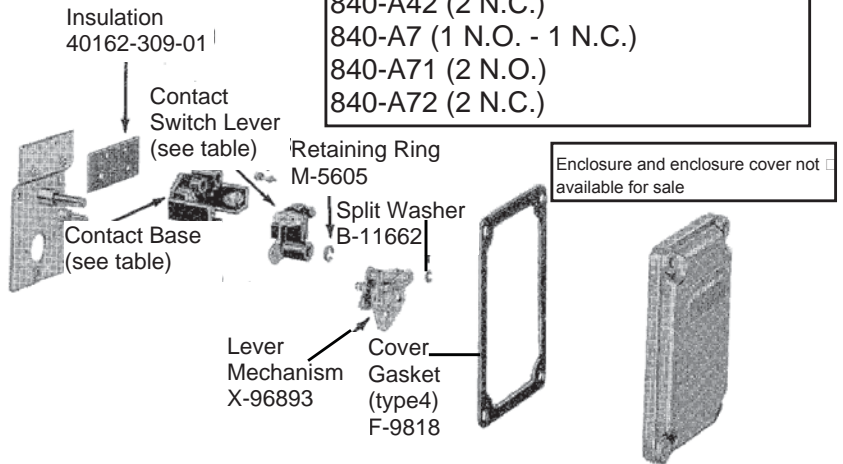
Renewal Parts Bulletin 840 Automatic Float Switches Styles A-B-C-D-DS-E

Renewal Parts for Switch Assemblies

Switch Assembly Catalog Numbers
840-A1 (1 N.O. - 1 N.C.)
840-A11 (2 N.O.)
840-A12 (2 N.C.)



Switch Assembly Catalog Numbers
840-A4 (1 N.O. - 1 N.C.)
840-A41 (2 N.O.)
840-A42 (2 N.C.)
840-A7 (1 N.O. - 1 N.C.)
840-A71 (2 N.O.)
840-A72 (2 N.C.)

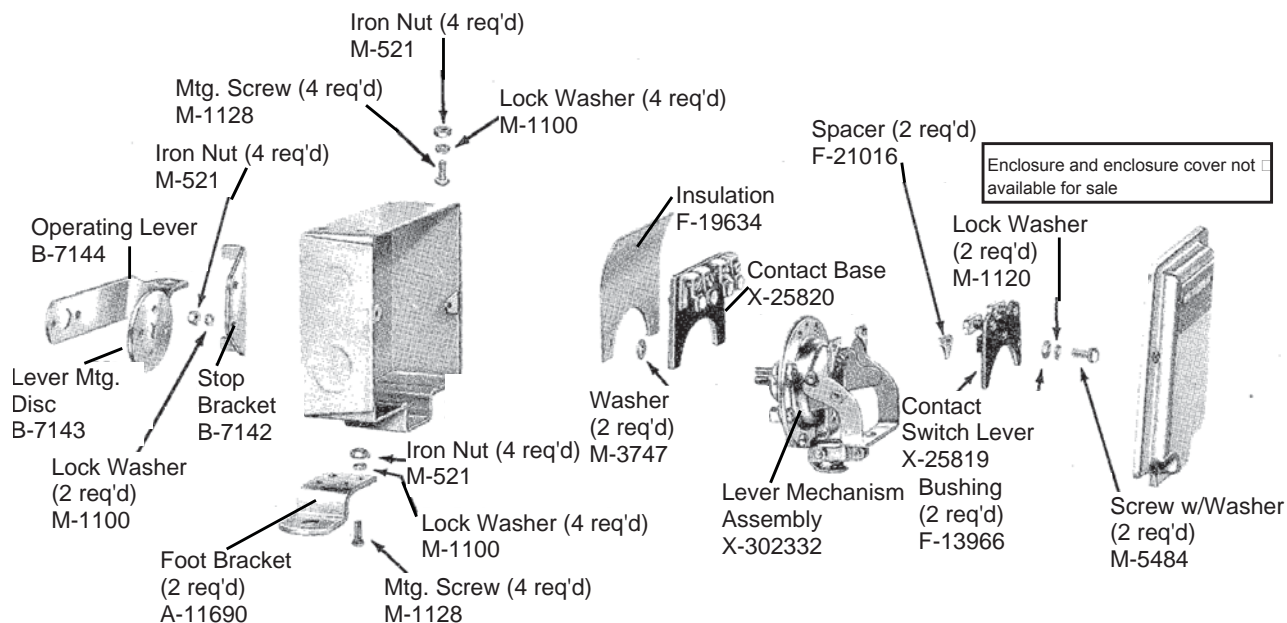


Contact Base contains stationary contacts
Contact Switch Lever contains movable contacts

Contact Arrangement	Contact Base Part No	Contact Switch Lever Part No
1 NO - 1 NC	X-45709	X-58917
2 NO	X-58737	X-59344
2 NC	X-58736	X-59343

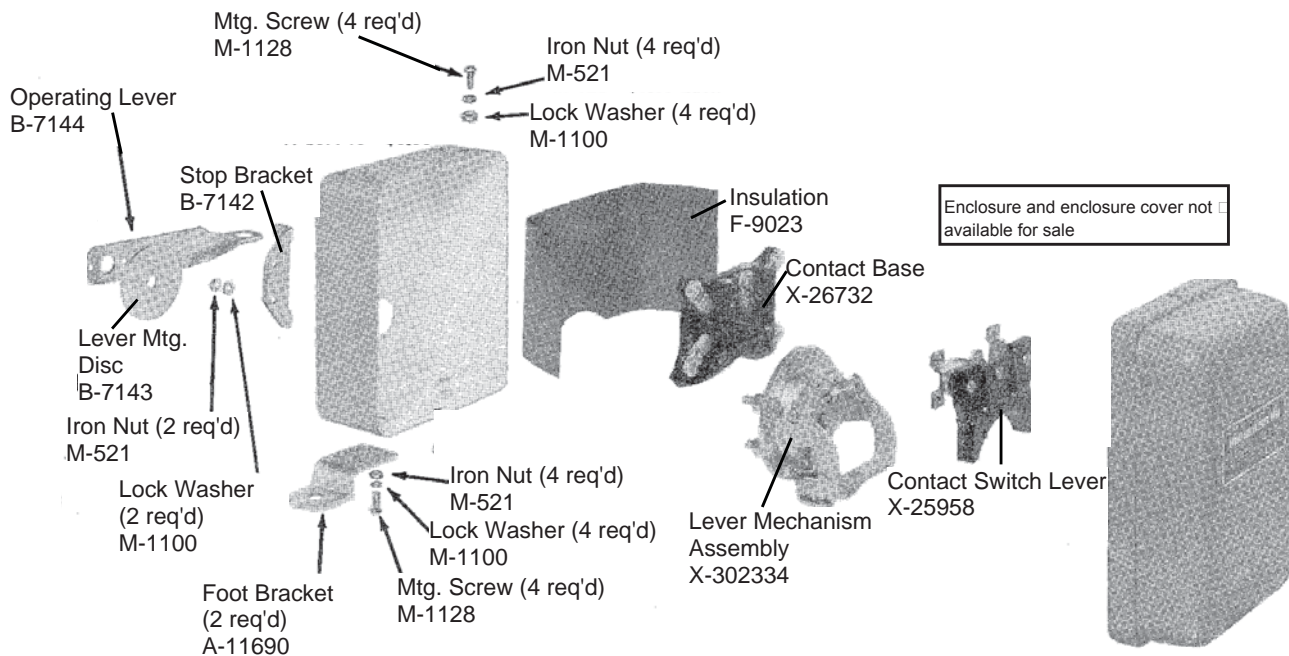
Bulletin 840 Automatic Float Switches

Switch Assembly Catalog Numbers 840-B1(2 N.O.)



Contact Base contains stationary contacts.
Contact Switch Lever contains movable contacts.

Switch Assembly Catalog Numbers 840-C1(3 N.O.)



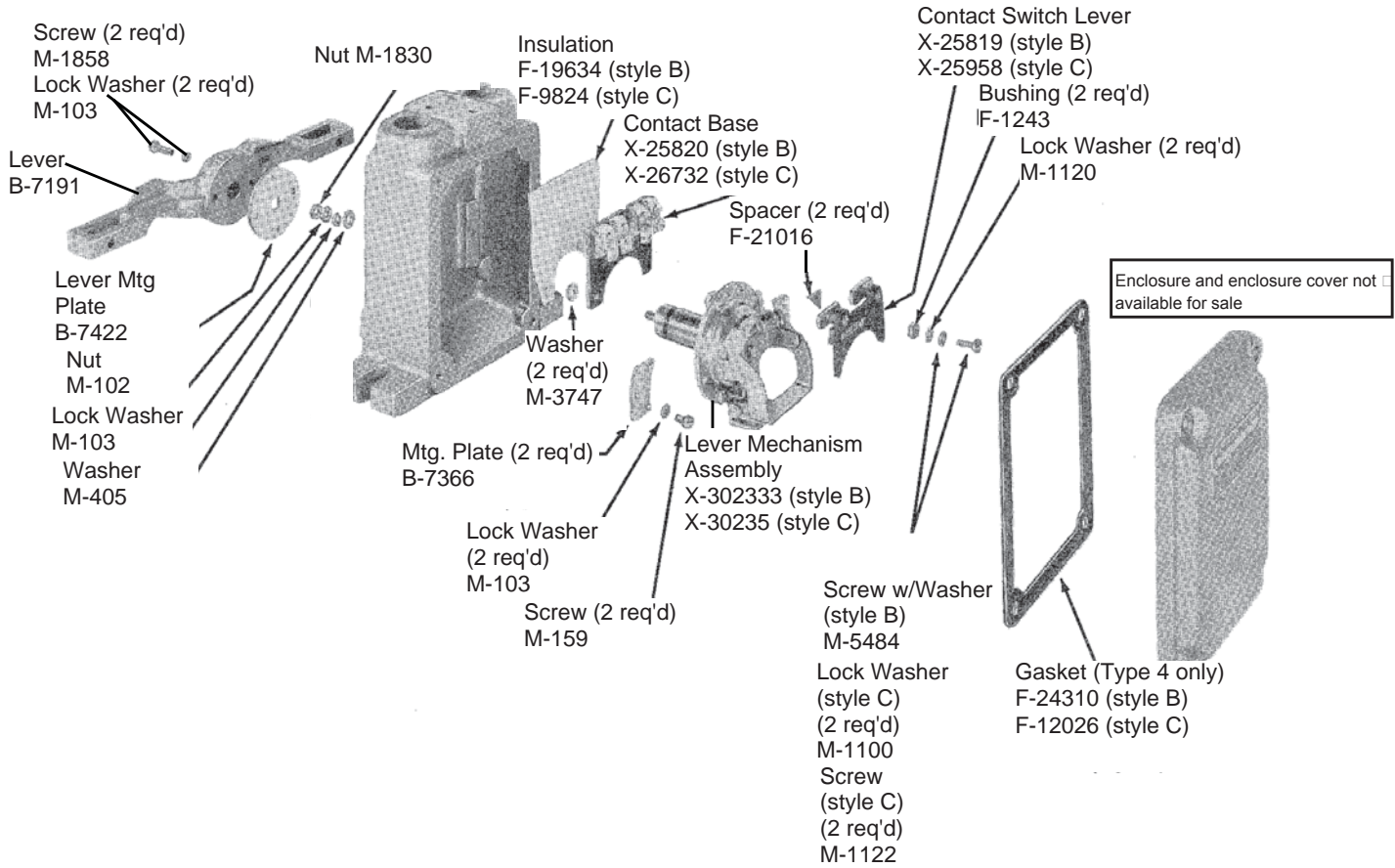
Switch Assembly Catalog Numbers

Style B

840-B4 (2 N.O.) (Nema Type 4)
840-B7 (2 N.O.) (Nema Type 7)

Style C

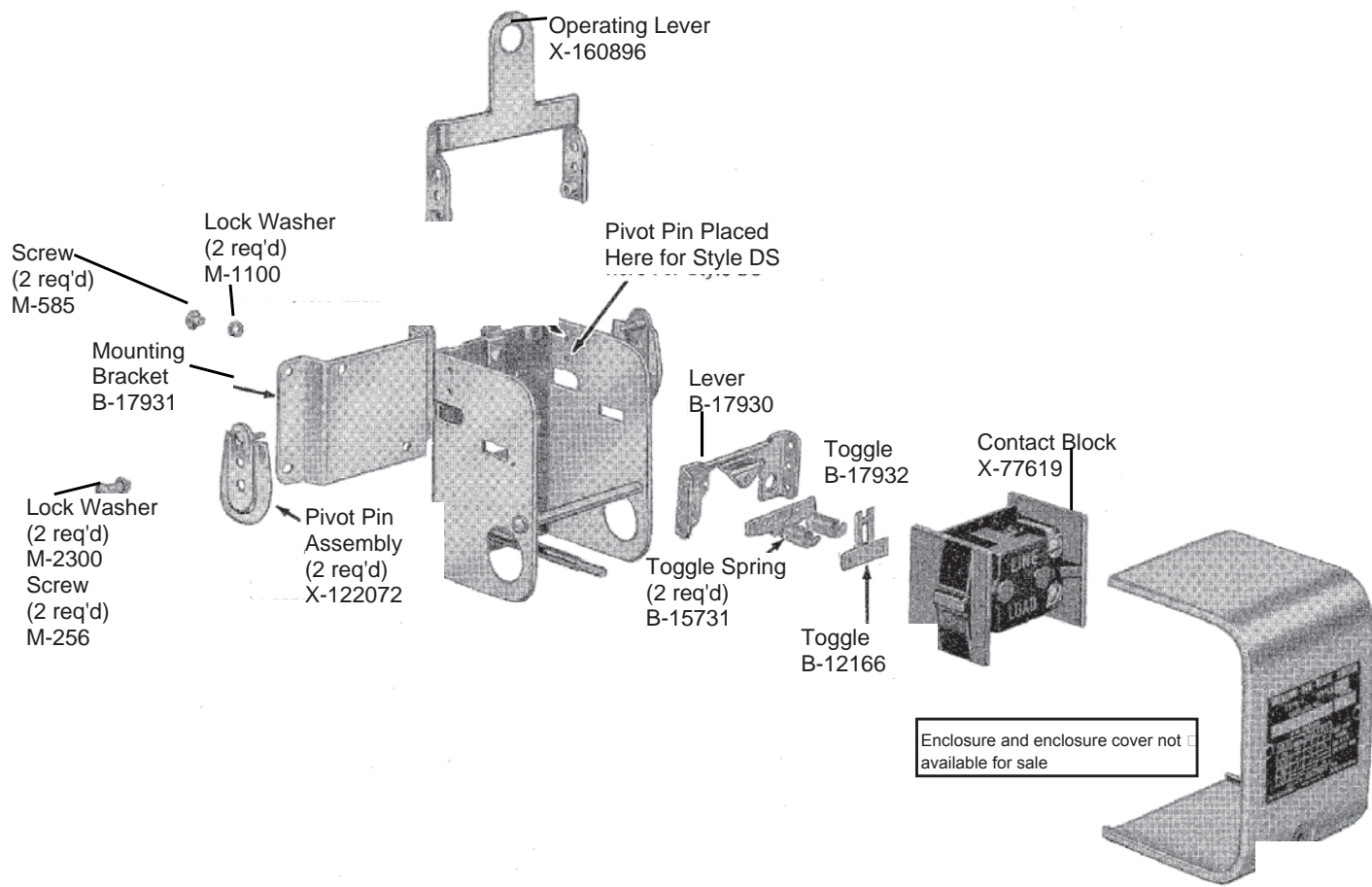
840-C4 (3 N.O.) (Nema Type 4)
840-C7 (3 N.O.) (Nema Type 7)



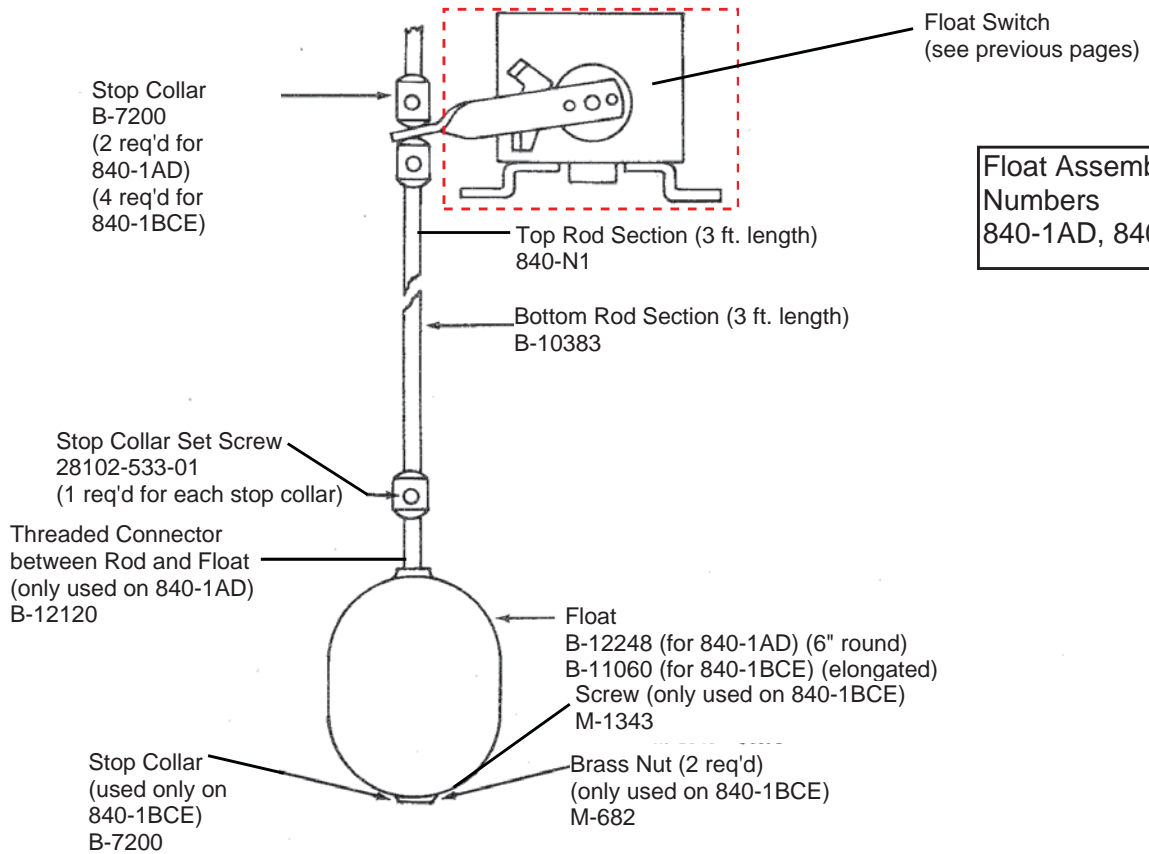
Style E • Types 1 - 4 - 7

No repair parts are available.

Switch Assembly Catalog Numbers
840-D1 (2 N.O.)
840-DS1 (2 N.O.)

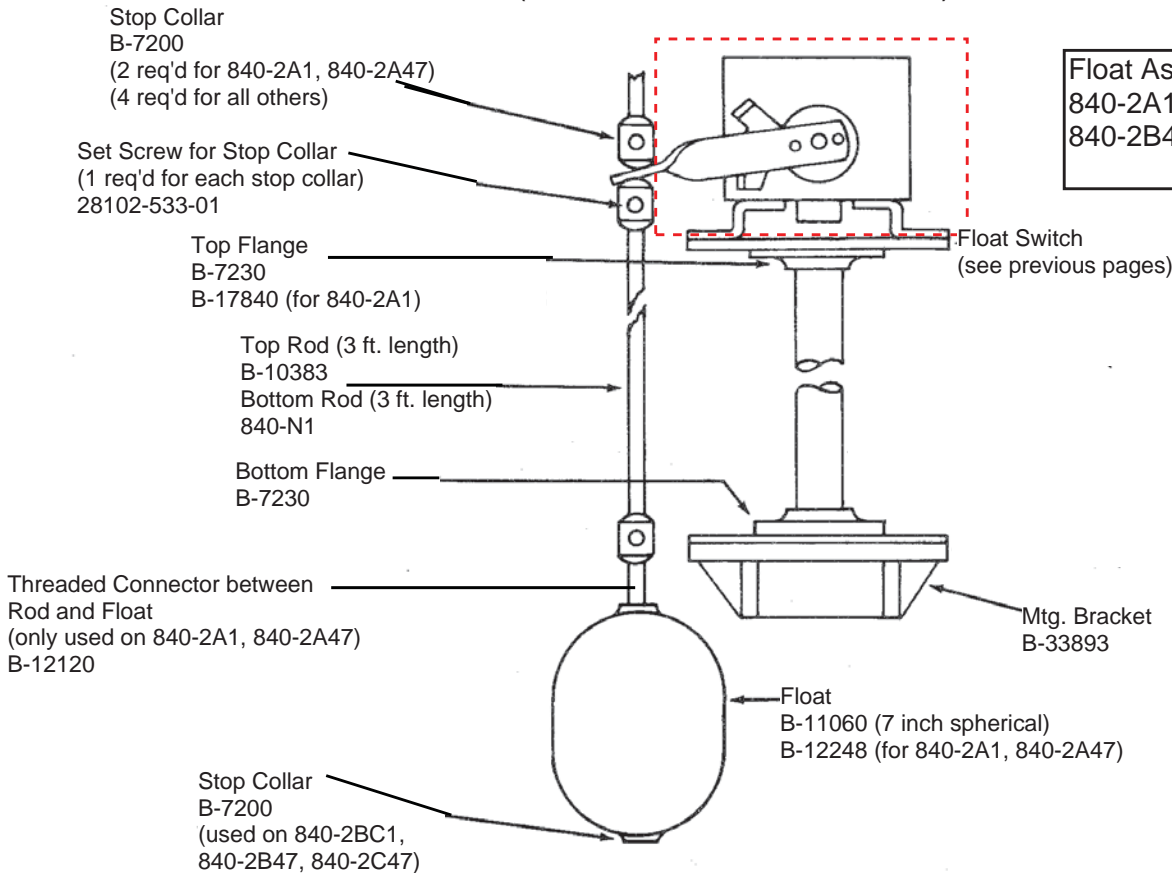


Renewal Parts for Float Assemblies Rod Operated - Wall Mounting (840-1BCE illustrated below)



Float Assembly Catalog
 Numbers
 840-1AD, 840-1BCE

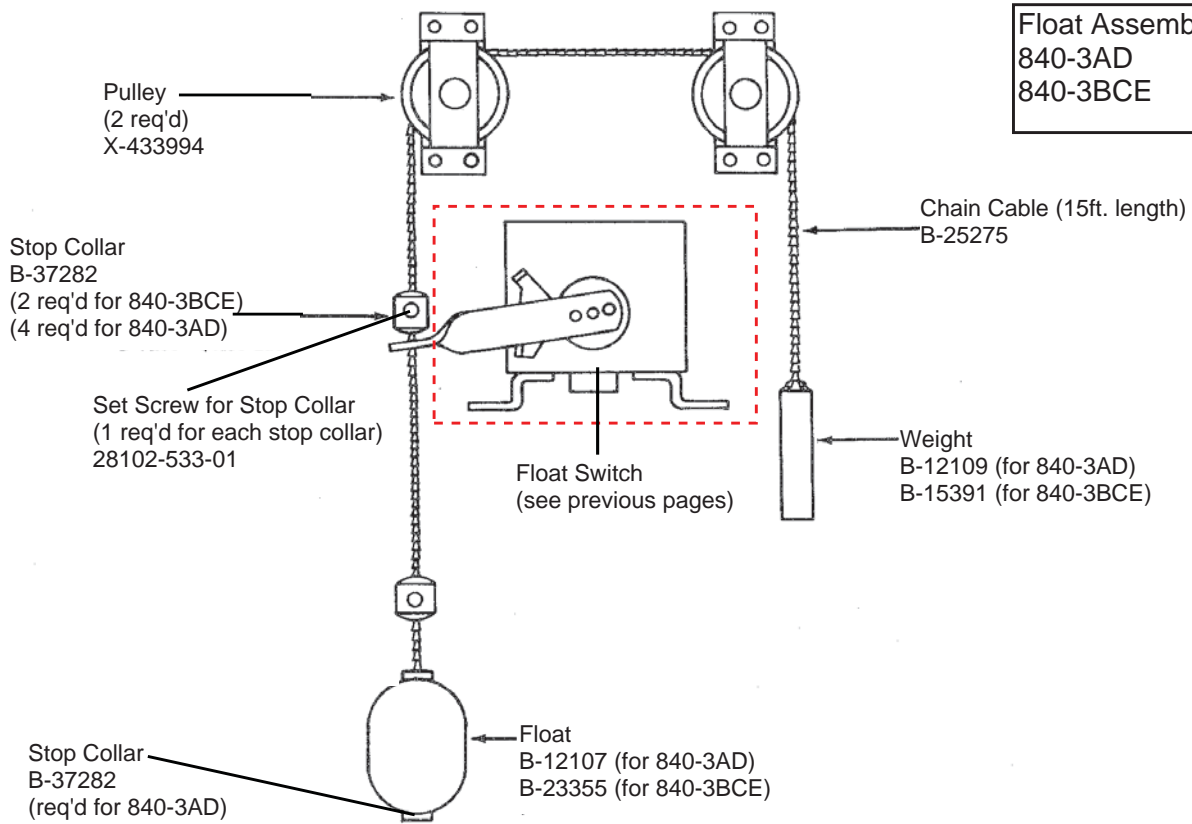
Rod Operated - Floor Mounting (840-2BC1 illustrated below)



Float Assembly Catalog Numbers
 840-2A1, 840-2A47, 840-2BC1,
 840-2B47, 840-2C47

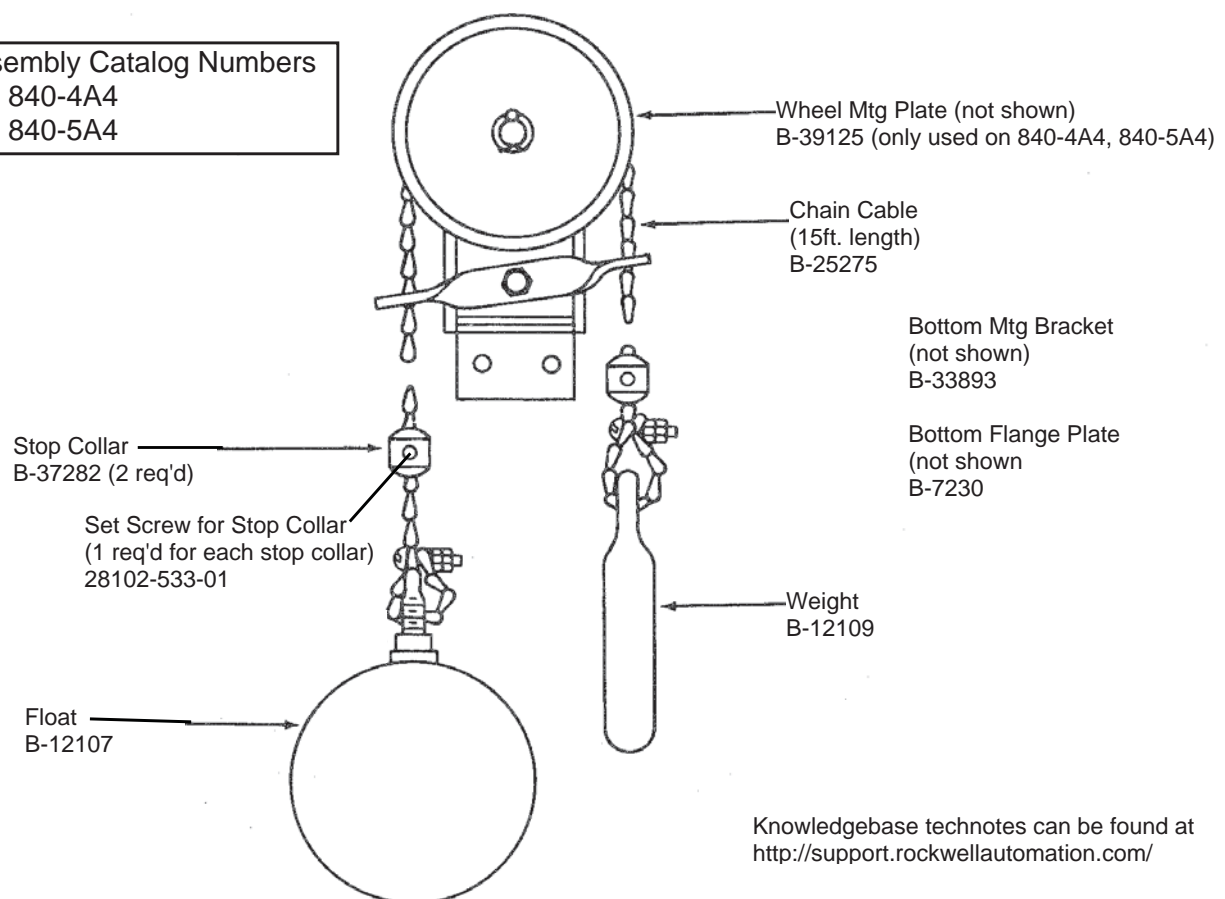
Renewal Parts for Float Assemblies Chain Operated - Separate Pulleys (840-3BCE illustrated below)

Float Assembly Catalog Numbers
 840-3AD
 840-3BCE



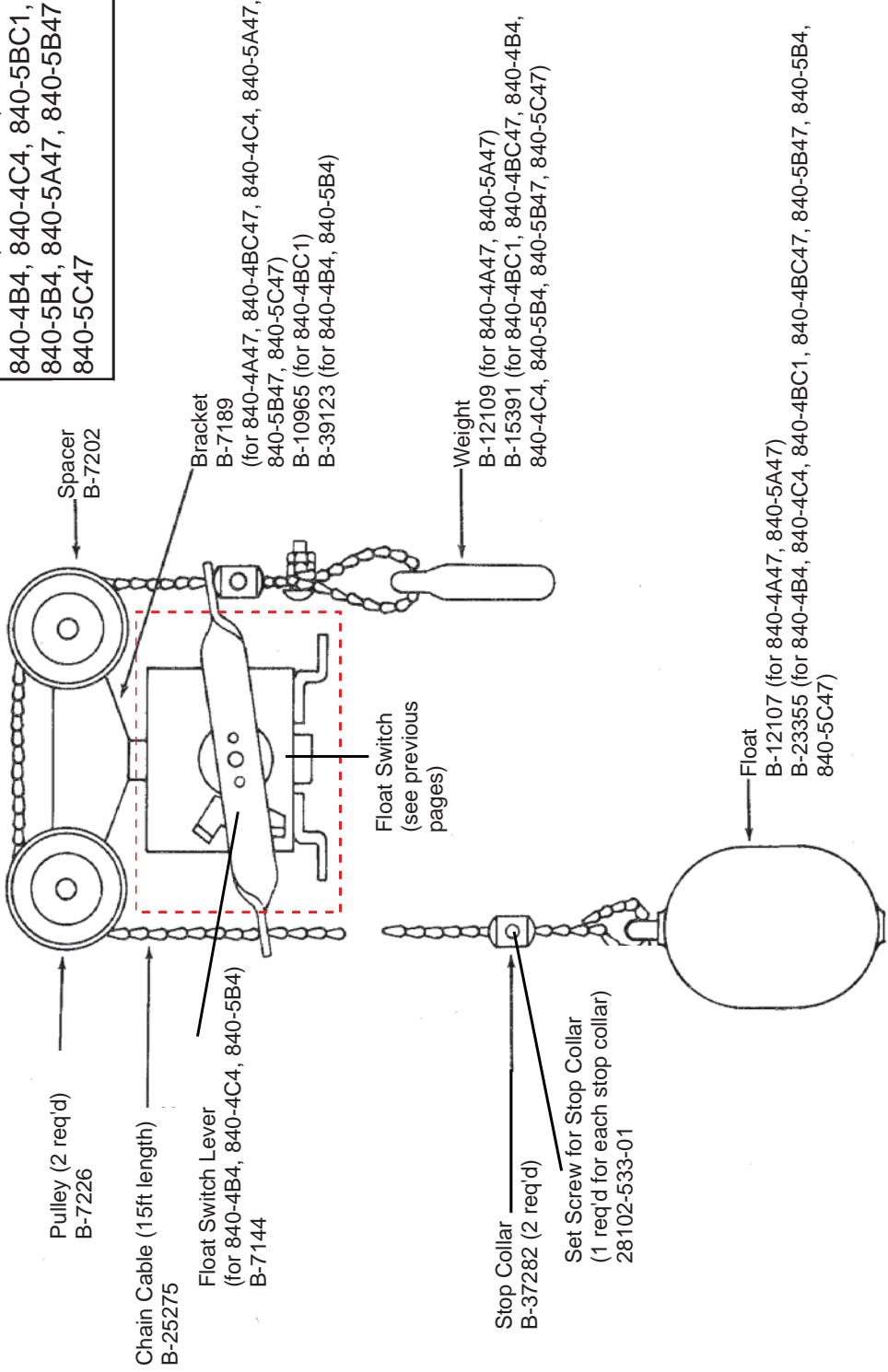
Chain Operated - Single Sheave Wheel (840-4A1 illustrated below)

Float Assembly Catalog Numbers
 840-4A1, 840-4A4
 840-5A1, 840-5A4



Renewal Parts for Float Assemblies Chain Operated - Self-Supported Pulleys (840-4BC1 illustrated below)

Float Assembly Catalog Numbers 840-4A47, 840-4BC1, 840-4BC47, 840-4B4, 840-4C4, 840-5BC1, 840-5B4, 840-5A47, 840-5B47, 840-5C47



Pulley (2 req'd)
B-7226

Chain Cable (15ft length)
B-25275

Float Switch Lever
(for 840-4B4, 840-4C4, 840-5B4)
B-7144

Float Switch
(see previous
pages)

Stop Collar
B-37282 (2 req'd)
Set Screw for Stop Collar
(1 req'd for each stop collar)
28102-533-01

Float
B-12107 (for 840-4A47, 840-5A47)
B-23355 (for 840-4B4, 840-4C4, 840-4BC1, 840-4BC47, 840-5B47, 840-5B4, 840-5C47)

Weight
B-12109 (for 840-4A47, 840-5A47)
B-15391 (for 840-4BC1, 840-4BC47, 840-4B4, 840-4C4, 840-5B4, 840-5B47, 840-5C47)

Bracket
B-7189
(for 840-4A47, 840-4BC47, 840-4C4, 840-5A47, 840-5B47, 840-5C47)
B-10965 (for 840-4BC1)
B-39123 (for 840-4B4, 840-5B4)

Top Mtg Plate (not shown)
B-7229 (for 840-5A47, 840-5B47)

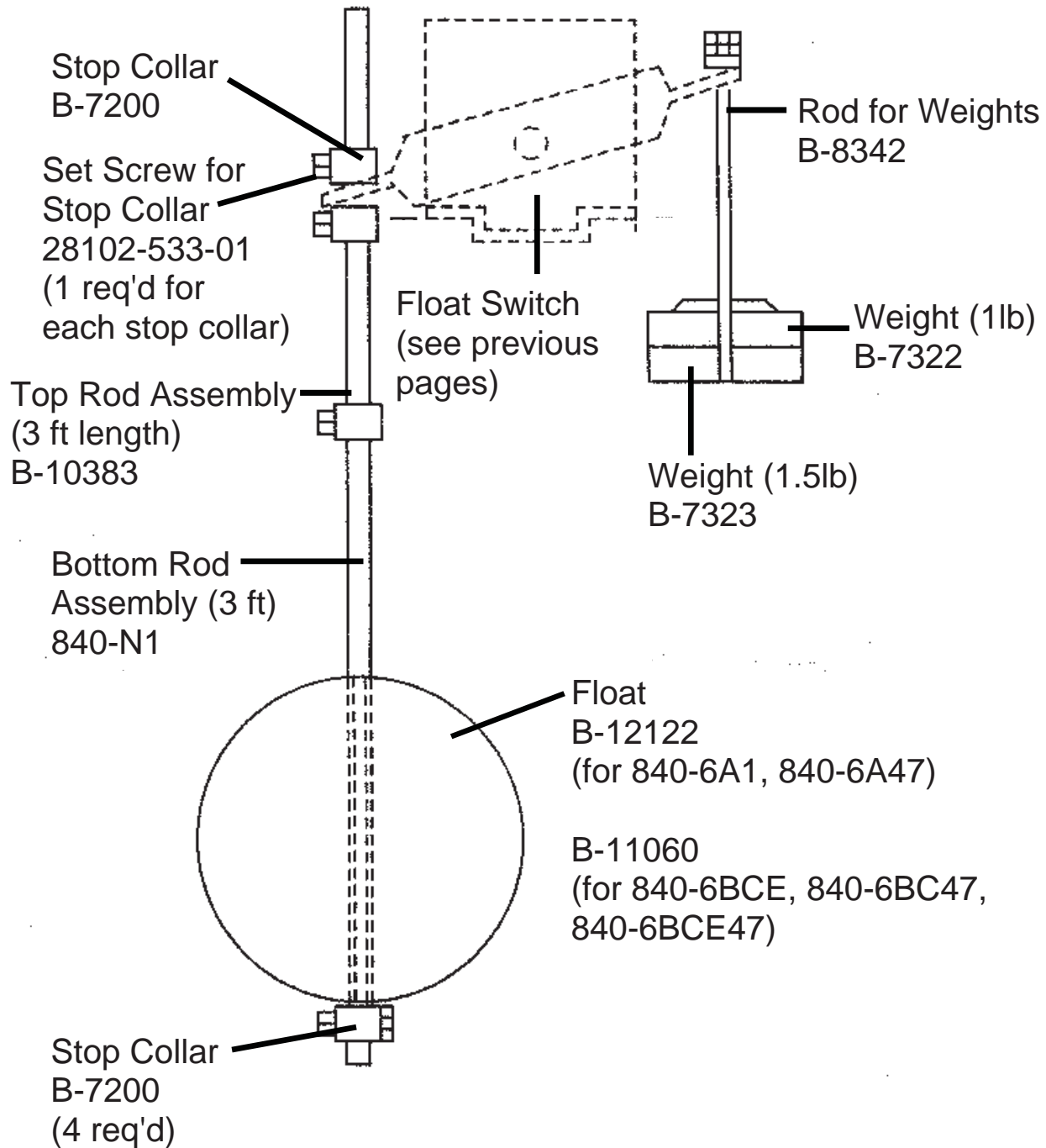
Bottom Flange Plate (not shown)
B-7230 (for 840-5A47, 840-5B47, 840-5B4, 840-5C47)

Bottom Mtg Bracket (not shown)
B-33893 (for 840-5A47, 840-5B4, 840-5B47, 840-5C47)

Renewal Parts for Float Assemblies

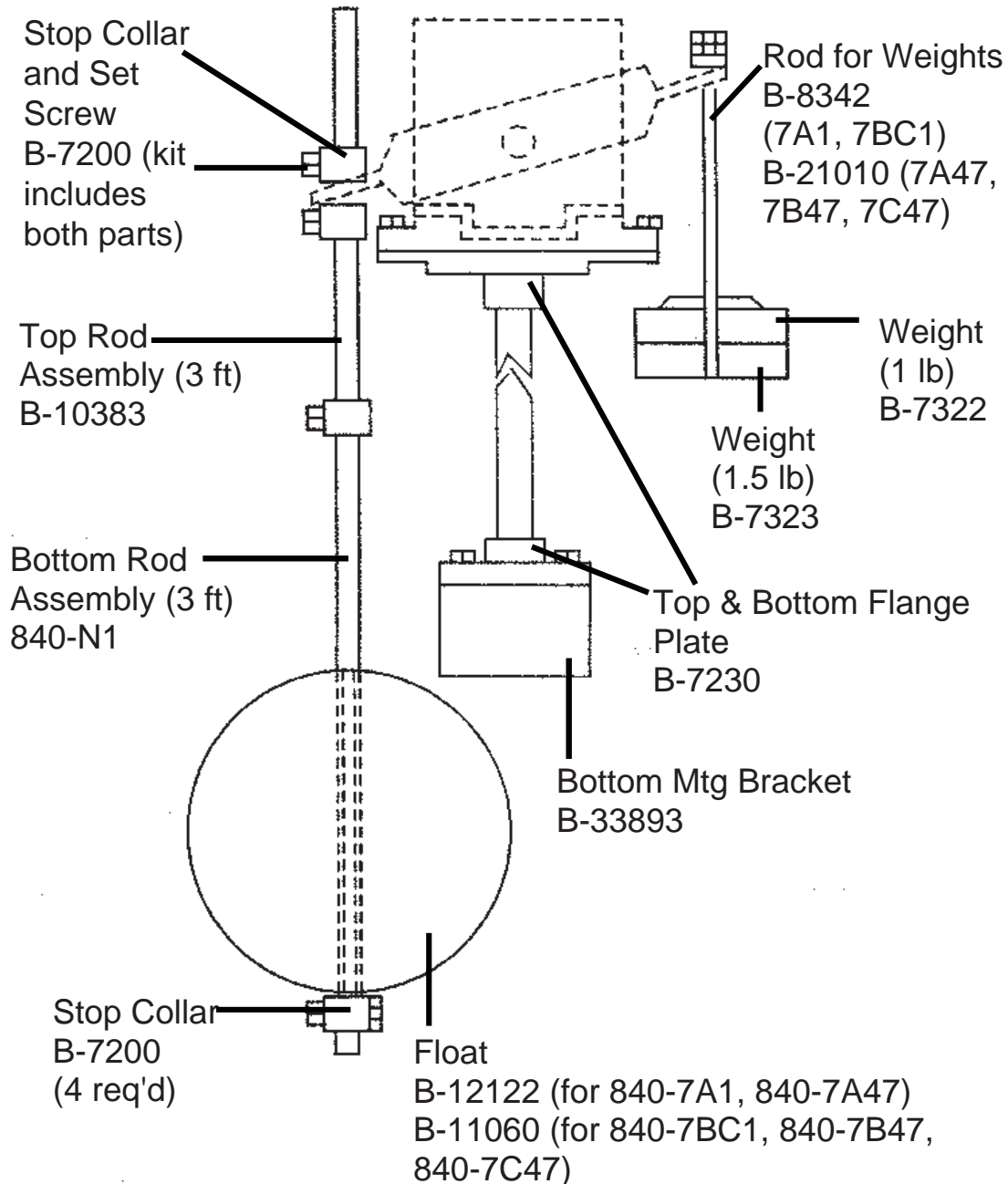
Double Arm Lever - Base Mounted (840-6BCE illustrated below)

Float Assembly Catalog Numbers
840-6A1, 840-6BCE, 840-6BC47,
840-6A47, 840-6BCE47

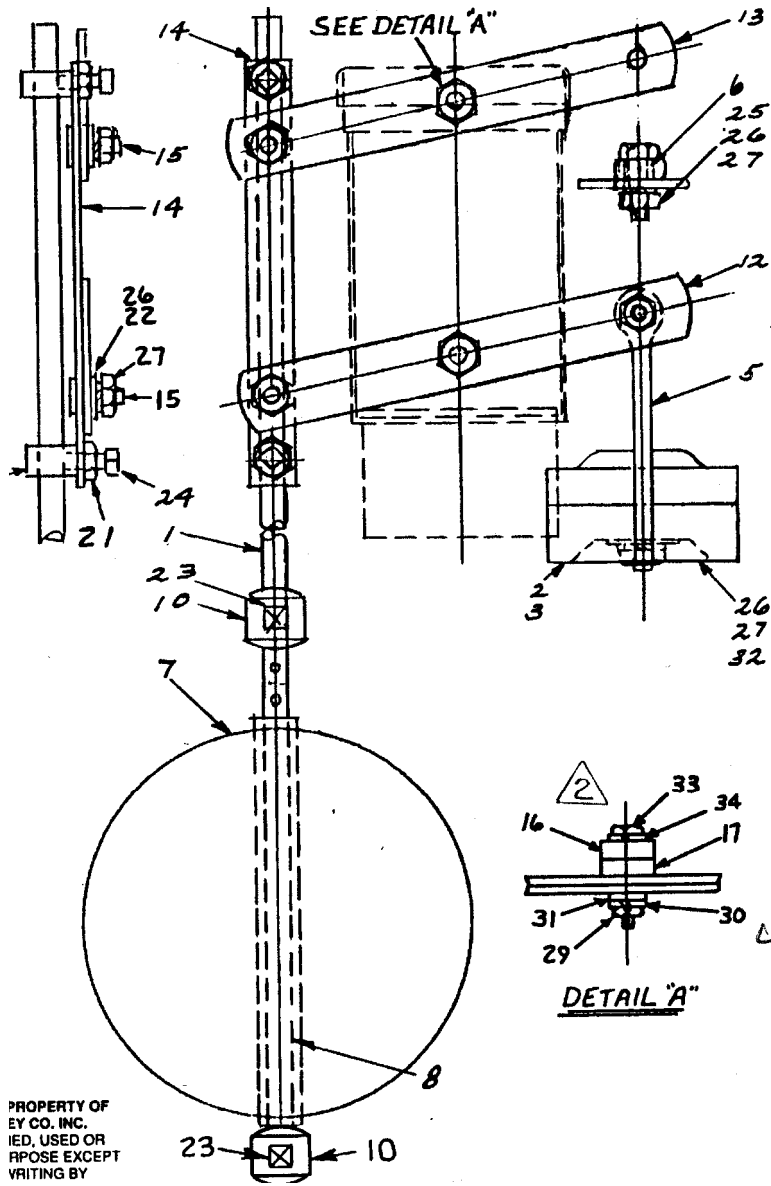


(840-7BC1 illustrated below)

Float Assembly Catalog Numbers
840-7A1, 840-7A47, 840-7BC1,
840-7B47, 840-7C47



Repair for Float Assemblies Double Parallel Arms Base Mounted (840-8A1 illustrated below)



PROPERTY OF
EY CO. INC.
IED, USED OR
RPOSE EXCEPT
WRITING BY

See next page for list of repair parts.

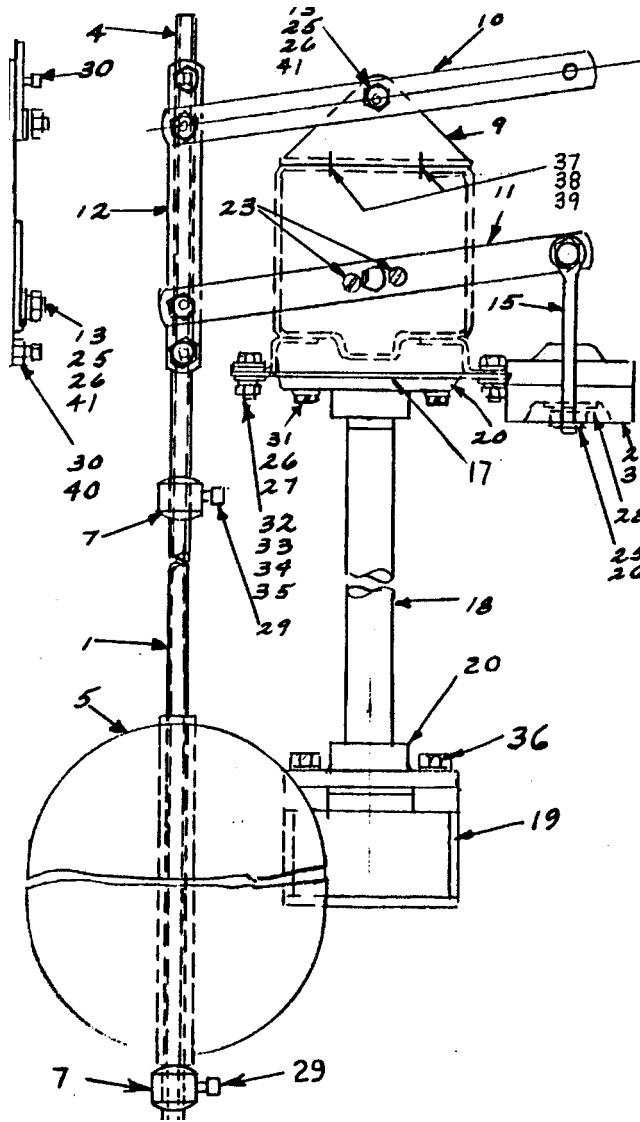
Repair Parts for Float Assemblies Double Parallel Arms Base Mounted

Renewal Parts List for Float Assembly Catalog Numbers:

840-8A1, 840-8A4, 840-8A47, 840-8B1, 840-8B4, 840-8B47, 840-8C1, 840-8C47

Item	Part Description	AB Part Number
1	Top Rod Assembly (3 ft length)	840-N1
2	Weight (1 lb)	Not Available
3	Weight (1.5 lb)	Not Available
5	Rod for Weights (for 840-8A1, 840-8A4, 840-8B1, 840-8B4, 840-8C1)	Not Available
	Rod for Weights (for 840-8A47, 840-8B47, 840-8C47)	Not Available
7	Float (for 840-8A1, 840-8A4, 840-8A47)	B-12122
	Float (for 840-8B1, 840-8B4, 840-8B47, 840-8C1, 840-8C47)	Not Available
8	Bottom Rod Assembly (3 ft length)	B-10383
10	Stop Collar (2 req'd)	B-7200
11	Clamp Ring (2 req'd)	Not Available
12	Bottom Lever (for 840-8A1, 840-8A4)	B-14461
	Bottom Lever (for 840-8A47, 840-8B47, 840-8C47)	Not Available
	Bottom Lever (for 840-8B1, 840-8C1)	Not Available
	Bottom Lever (for 840-8B4)	Not Available
13	Top Lever (840-8A1)	B-14462
	Top Lever (for 840-8A4)	B-39128
	Top Lever (for 840-8A47, 840-8B47, 840-8C47)	Not Available
	Top Lever (for 840-8B1, 840-8B4, 840-8C1)	Not Available
14	Guide Rod (for 840-8A1, 840-8A4)	B-14463
	Guide Rod (for 840-8A47)	B-12128
	Guide Rod (for 840-8B1, 840-8B4)	Not Available
	Guide Rod (for 840-8B47)	Not Available
	Guide Rod (for 840-8C1)	Not Available
	Guide Rod (for 840-8C47)	Not Available
23	Set Screw for Stop Collar	Not Available
-	Mtg Bracket (attached to top lever – for 840-8B4)	Not Available
-	Mtg Bracket (attached to top lever – for 840-8C1)	Not Available
-	Lever Bracket (attaches to float switch – for 840-8A47, 840-8B47, 840-8C47)	Not Available

Repair Parts for Float Assemblies
Double Parallel Arms Floor Mounted
(840-9B1 illustrated below)



See following page for repair parts list.

Repair Parts for Float Assemblies Double Parallel Arms Floor Mounted

Repair Parts List for Float Assembly Catalog Numbers:

840-9A1, 840-9A4, 840-9A47, 840-9B1, 840-9B4, 840-9B47, 840-9C1, 840-9C47

Item	Part Description	AB Part Number
1	Bottom Rod Assembly (3 ft length)	840-N1
2	Weight (7 oz) (for 840-9A1)	B-12592
	Weight (1 lb)	Not Available
3	Weight (1.5 lb)	Not Available
4	Top Rod Assembly (3 ft length)	B-10383
5	Float (for 840-9A1, 840-9A4, 840-9A47)	B-12122
	Float (for 840-9B1, 840-9B4, 840-9B47, 840-9C1, 840-9C47)	Not Available
7	Stop Collar (2 req'd)	B-7200
8	Spacer	Not Available
9	Mtg Bracket (for 840-9B1, 840-9C1)	Not Available
10	Top Lever (for 840-9A1)	B-14462
	Top Lever (for 840-9A4)	B-39128
	Top Lever (for 840-9A47, 840-9B47, 840-9C47)	Not Available
	Top Lever (for 840-9B1, 840-9B4, 840-9C1)	Not Available
11	Bottom Lever (for 840-9A1, 840-9A4)	B-14461
	Bottom Lever (for 840-9A47, 840-9B47, 840-9C47)	Not Available
	Bottom Lever (for 840-9B1, 840-9C1)	Not Available
	Bottom Lever (for 840-9B4)	Not Available
12	Guide Rod (840-9A1, 840-9A4)	B-14463
	Guide Rod (for 840-9A47)	B-12128
	Guide Rod (for 840-9B1, 840-9B4)	Not Available
	Guide Rod (for 840-9B47)	Not Available
	Guide Rod (for 840-9C1)	Not Available
	Guide Rod (for 840-9C47)	Not Available
14	Clamp Ring (2 req'd)	Not Available
15	Rod for Weights (for 840-9A1, 840-9A4, 840-9B1, 840-9B4, 840-9C1)	Not Available
	Rod for Weights (for 840-9A47, 840-9B47, 840-9C47)	Not Available
19	Mounting Bracket	Not Available
20	Bottom Flange Plate	Not Available
29	Set Screw for Stop Collar (1 req'd for each stop collar)	Not Available
-	Lever Bracket (attaches to float switch – for 840-9A47, 840-9B47, 840-9C47)	Not Available