

CRITICAL TO QUALITY CLASSIFICATION TABLE				
P=PERFORMANCE, FE FIT, A=ASSEMBLY				
X=IDENTIFIES APPLICABLE CLASSIFICATION(S)				
◇=ENGINEERING AND/OR MANUFACTURING REQUIREMENT				
⊗=REGULATORY REQUIREMENT - CONFORMANCE IS MANDATORY				
COMMENTS	DRAWING (ZONE)	◇	◇	⊗
ROHS	H1			X

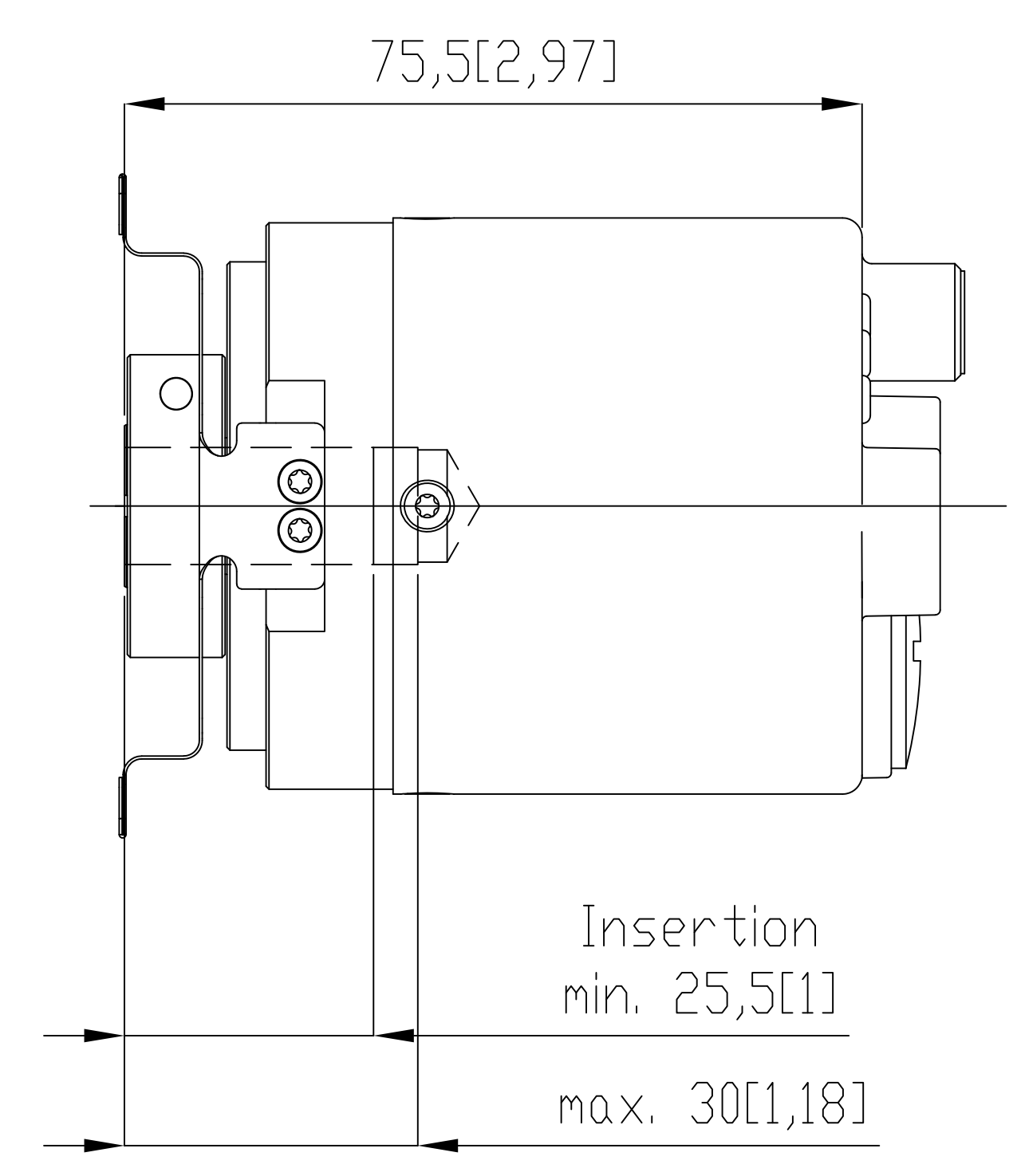
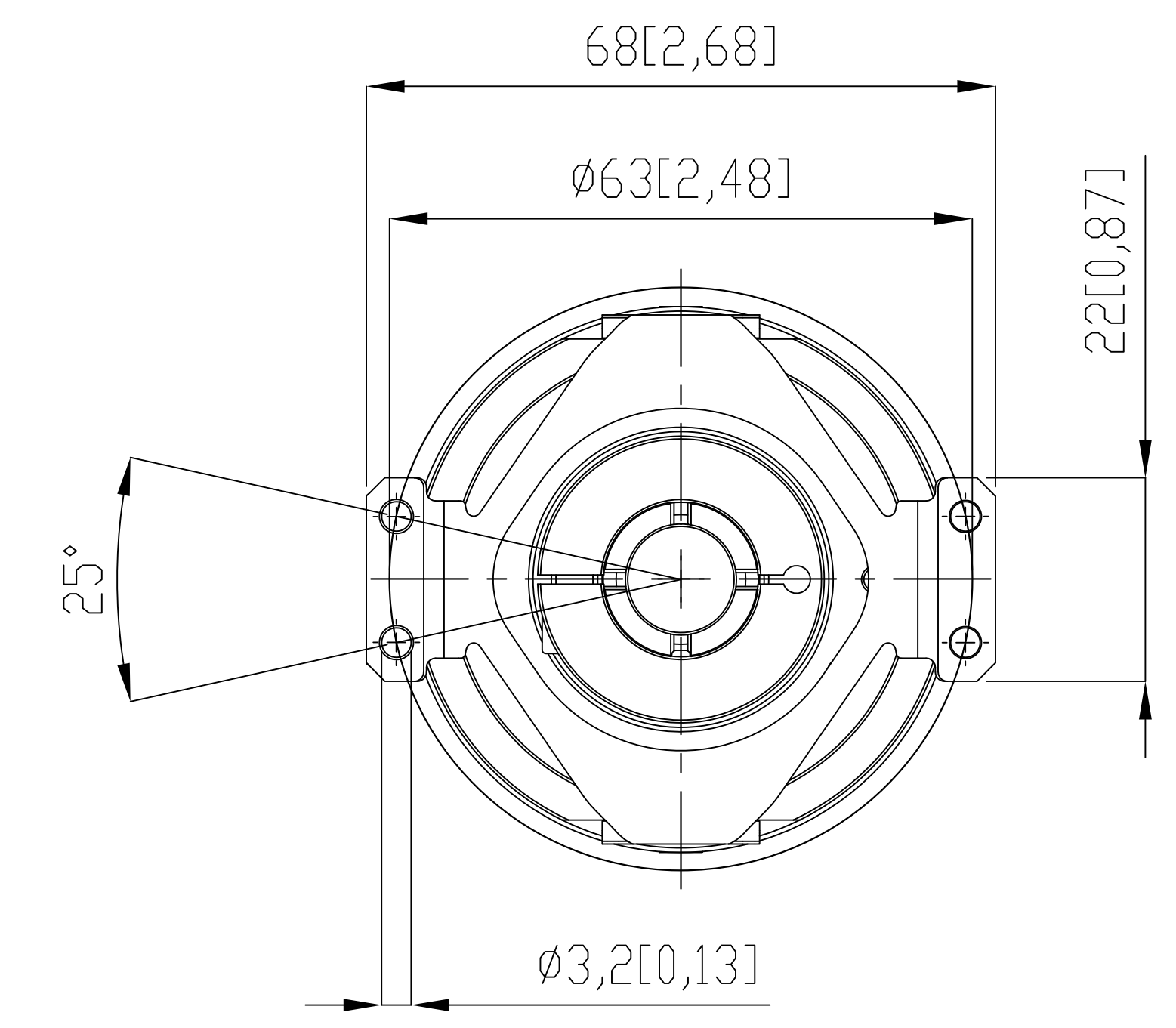
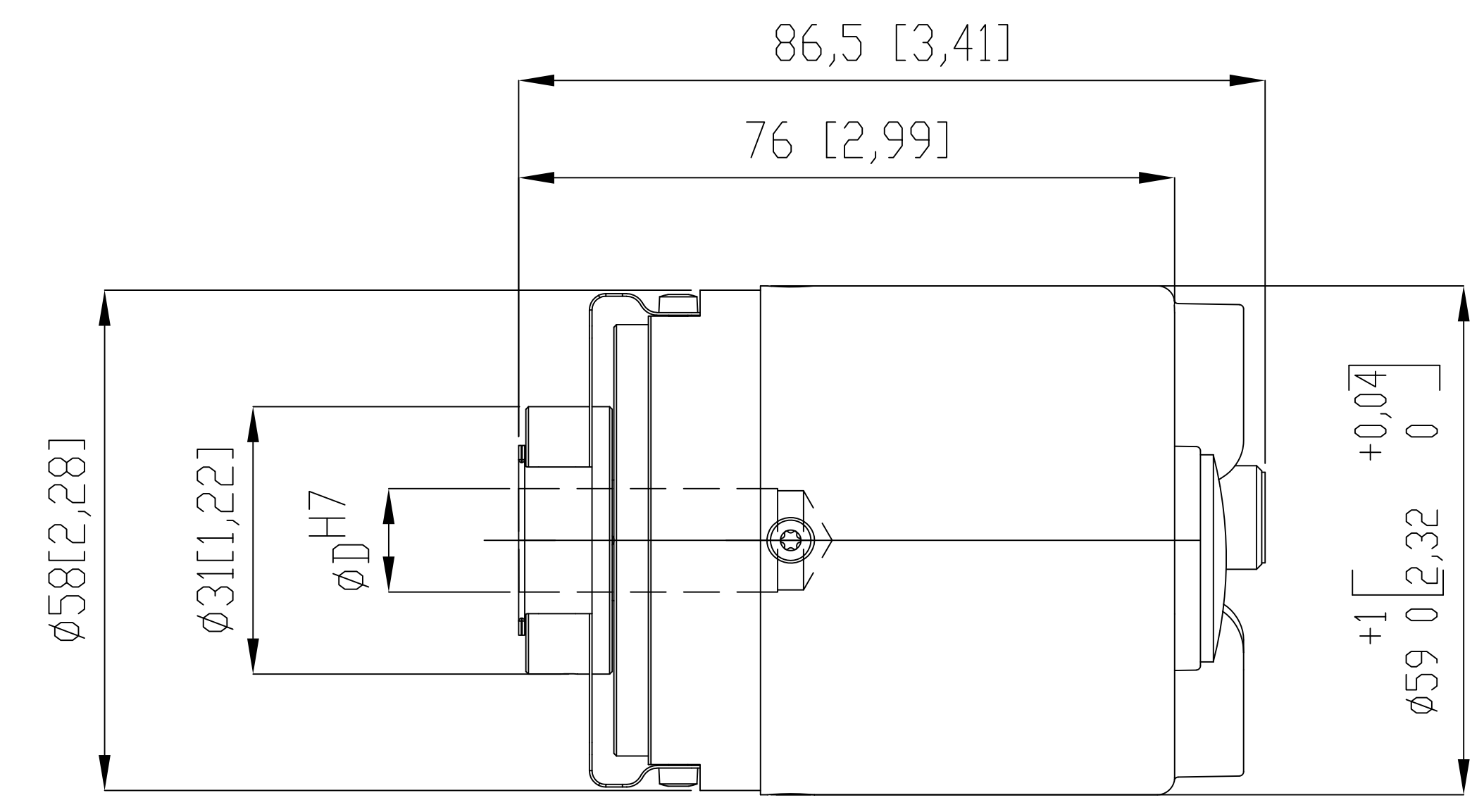
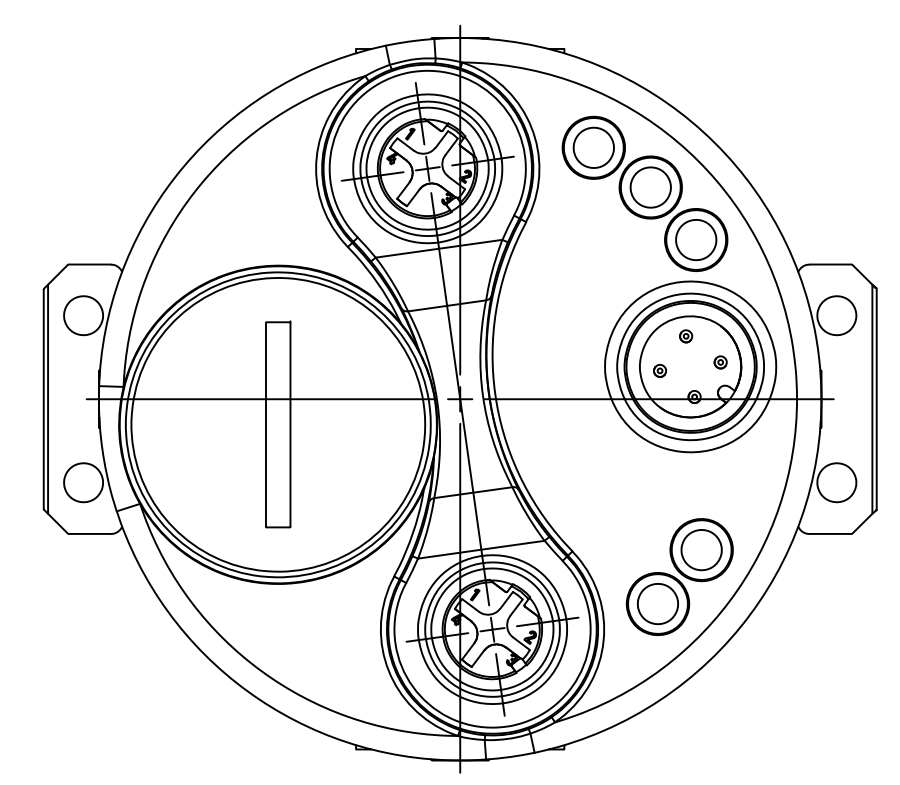


FIGURE 4 HOLLOW SHAFT FLANGE

NOTES:
 1. ALL DIMENSIONS IN MM (INCHES) AND ARE FOR REFERENCE ONLY.
 2. 10 MM, 12 MM, 14 MM, 15 MM, 3/8 INCH AND 1/2 INCH SHAFT DIAMETERS ϕ D.

MUST COMPLY WITH ROCKWELL AUTOMATION ENVIRONMENTAL SPECIFICATION 9705-0401

		CONFIDENTIAL AND PROPRIETARY INFORMATION. THIS DOCUMENT CONTAINS CONFIDENTIAL AND PROPRIETARY INFORMATION OF ROCKWELL AUTOMATION, INC. AND MAY NOT BE USED, COPIED OR DISCLOSED TO OTHERS, EXCEPT WITH THE AUTHORIZED WRITTEN PERMISSION OF ROCKWELL AUTOMATION, INC.	
DESCRIPTION	DATE	SHEET	OF
843ES CIP SAFETY ETHERNET IP, ENCODER	2020-01-24	1	1
CREATED BY	VR1	CHANGED BY	NKUMAR23
SIZE	DIR	VER	
D	843ES-XIPXA6		