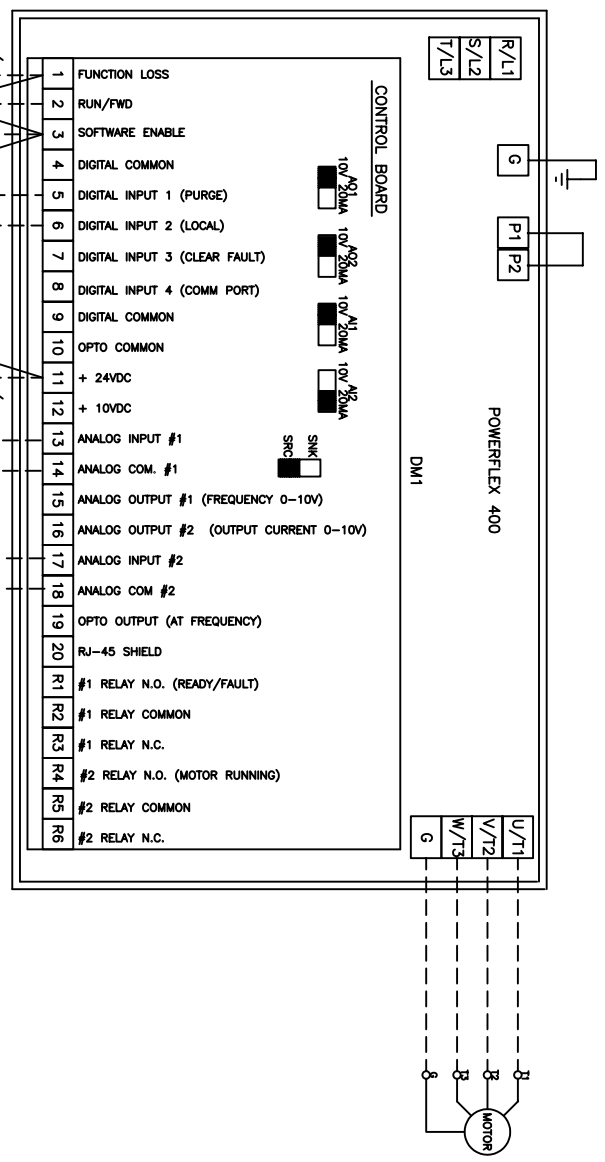
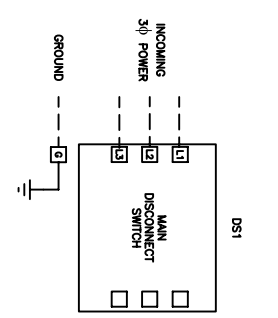


01  
02  
03  
04  
05  
06  
07  
08  
09  
10  
11  
12  
13  
14  
15  
16  
17  
18  
19  
20  
21  
22  
23  
24  
25  
26  
27  
28  
29  
30  
31  
32  
33  
34  
35  
36  
37  
38  
39  
40  
41  
42



- Δ OPENING OF THE FREEZE/FIRE INTERLOCK WILL REQUIRE MANUAL RESET.
- Δ WHEN IN "AUTO MODE" SPEED REFERENCE MUST BE FROM 0-10VDC SOURCE AND TO BE USED WIRE TO ANALOG INPUT #2 AND CHANGE PARAMETER POS8 [SPEED REFERENCE] = 3 "ANALOG IN2".
- Δ IF FREEZE/FIRE STATUS INTERLOCK IS USED, THE JUMPER WIRE FROM TERMINALS 1 TO 3 MUST BE REMOVED.
- Δ IF THE INTERLOCK CONTACT IS USED, THE JUMPER FROM TERMINALS 1 TO 3 MUST BE REMOVED AND THE JUMPER WIRE FROM TERMINALS 3 TO 11 SHOULD BE RELOCATED TO CONNECT TERMINALS 1 TO 11.

DATE	BY	APPROVAL
		DESIGN REVIEW
		FOR MANUFACTURING
		AS SHIPPED
		AS COMMISSIONED

REV. I	DATE	BY	EON/GR. N.D.
A	11/24/04	JRF	
B	2/2/05	JRF	
C	11/14/06	REH	

DR. BY	JRF/ACI	CHK. BY	JFH/ACI	ENG. DATE
DATE	4/5/04	DATE	4/5/04	DATE



THIS DRAWING IS THE PROPERTY OF ROCKWELL AUTOMATION, INC. OR ITS SUBSIDIARIES AND MAY NOT BE COPIED, USED OR DISCLOSED FOR ANY PURPOSE EXCEPT AS AUTHORIZED IN WRITING BY ROCKWELL AUTOMATION, INC.

TITLE: **CONNECT DRAWING - PF400, STYLE A**  
 3-50HP @ 208VAC & 3-150HP @ 460VAC

DWG. NO. 97D000696 -

NEXT SH.	1
SH. NO.	1

01  
02  
03  
04  
05  
06  
07  
08  
09  
10  
11  
12  
13  
14  
15  
16  
17  
18  
19  
20  
21  
22  
23  
24  
25  
26  
27  
28  
29  
30  
31  
32  
33  
34  
35  
36  
37  
38  
39  
40  
41  
42