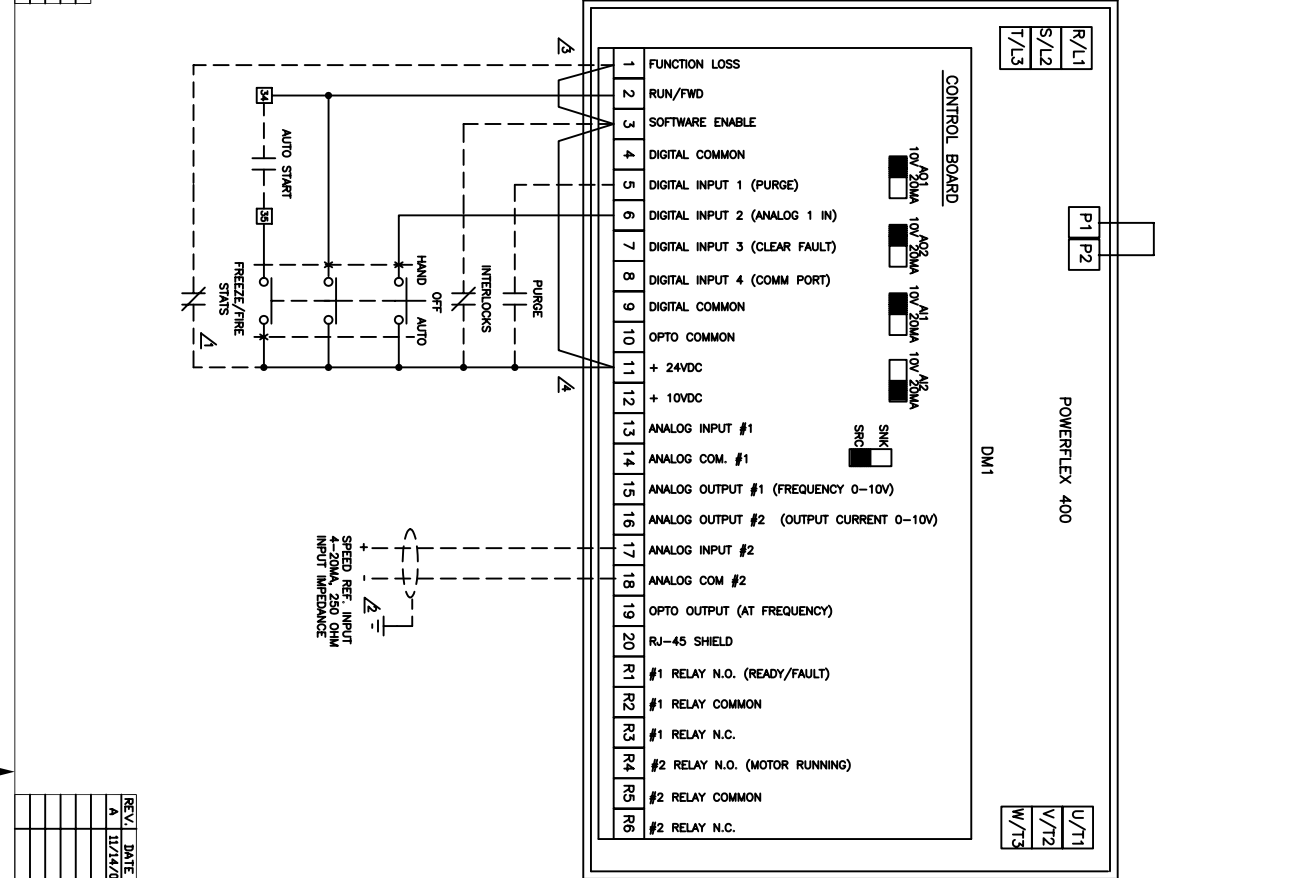


01
02
03
04
05
06
07
08
09
10
11
12
13
14
15
16
17
18
19
20
21
22
23
24
25
26
27
28
29
30
31
32
33
34
35
36
37
38
39
40
41
42

DATE	BY	APPROVAL
		DESIGN REVIEW
		FOR MANUFACTURING
		AS SHIPPED
		AS COMMISSIONED



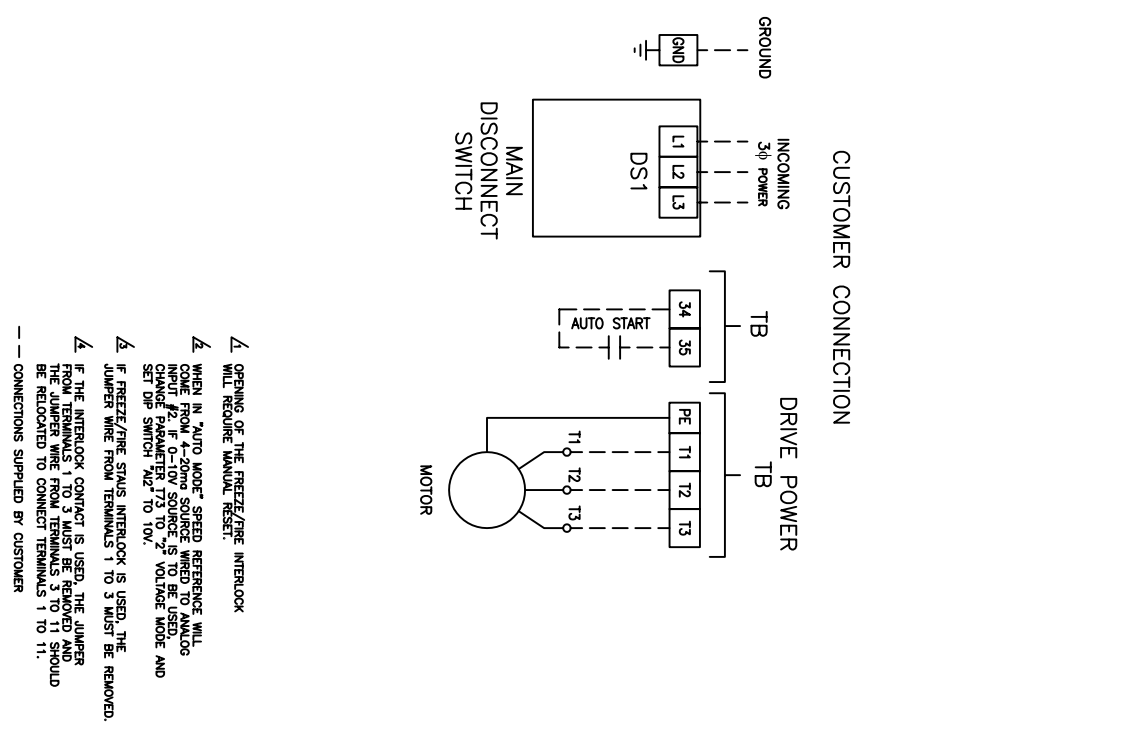
REV. I	DATE	BY	ECON/GR. NO.
A	11/14/06	REH	

DR. BY	JFH/ACI	CHK. BY	JCL/ACI	ENG. JFH/ACI	DATE	11/23/06	DWG. NO.	97D01548	NEXT SH.	1	SH. NO.	1
DATE	11/23/05	DATE	02/17/05	DATE	11/23/06							



THIS DRAWING IS THE PROPERTY OF ROCKWELL AUTOMATION, INC. OR ITS SUBSIDIARIES AND MAY NOT BE COPIED, USED OR DISCLOSED FOR ANY PURPOSE EXCEPT AS AUTHORIZED IN WRITING BY ROCKWELL AUTOMATION, INC.

TITLE: CUSTOMER DRAWING - PF400, STYLE A
 3-35HP @ 208VAC, 3-35HP @ 460VAC
 NEMA 3R, 4, 12



- Δ OPENING OF THE FREEZE/FIRE INTERLOCK WILL REQUIRE MANUAL RESET.
 - Δ WHEN IN "AUTO MODE" SPEED REFERENCE WILL COME FROM A 240V SOURCE WIRING TO ANALOG CHANGE PARAMETER 773 TO "V" VOLTAGE MODE AND SET DIP SWITCH #42 TO 10V.
 - Δ IF FREEZE/FIRE STATUS INTERLOCK IS USED, THE JUMPER WIRE FROM TERMINALS 1 TO 3 MUST BE REMOVED.
 - Δ IF THE INTERLOCK CONTACT IS USED, THE JUMPER FROM TERMINALS 1 TO 3 MUST BE REMOVED AND THE JUMPER WIRE FROM TERMINALS 3 TO 11 SHOULD BE RELOCATED TO CONNECT TERMINALS 1 TO 11.
- — CONNECTIONS SUPPLIED BY CUSTOMER

01

42