

Rockwell
Automation



Allen-Bradley

Product Information Packet

Rockwell Automation

CM224-XV00218AXZCA

2HP,1800RPM,3PH,60HZ,145TC,EPNV

CM224-XV00218AXZCA

Motor Family

Torque Speed

Enclosure Code

Horsepower Load Type

Temp Rating Mount Type

Insulation Start Type

Duty Design Frame

Model # Y979

Voltage Usable at 208V

Base Speed Amps

CHP Speed Max Speed

Conduit Box Location Service Factor

Bearing Type: ODE Bearing

Grease DE Bearing

OPTIONS

Encoder PPR Tachometer Tach Voltage

Heater Blower Voltage

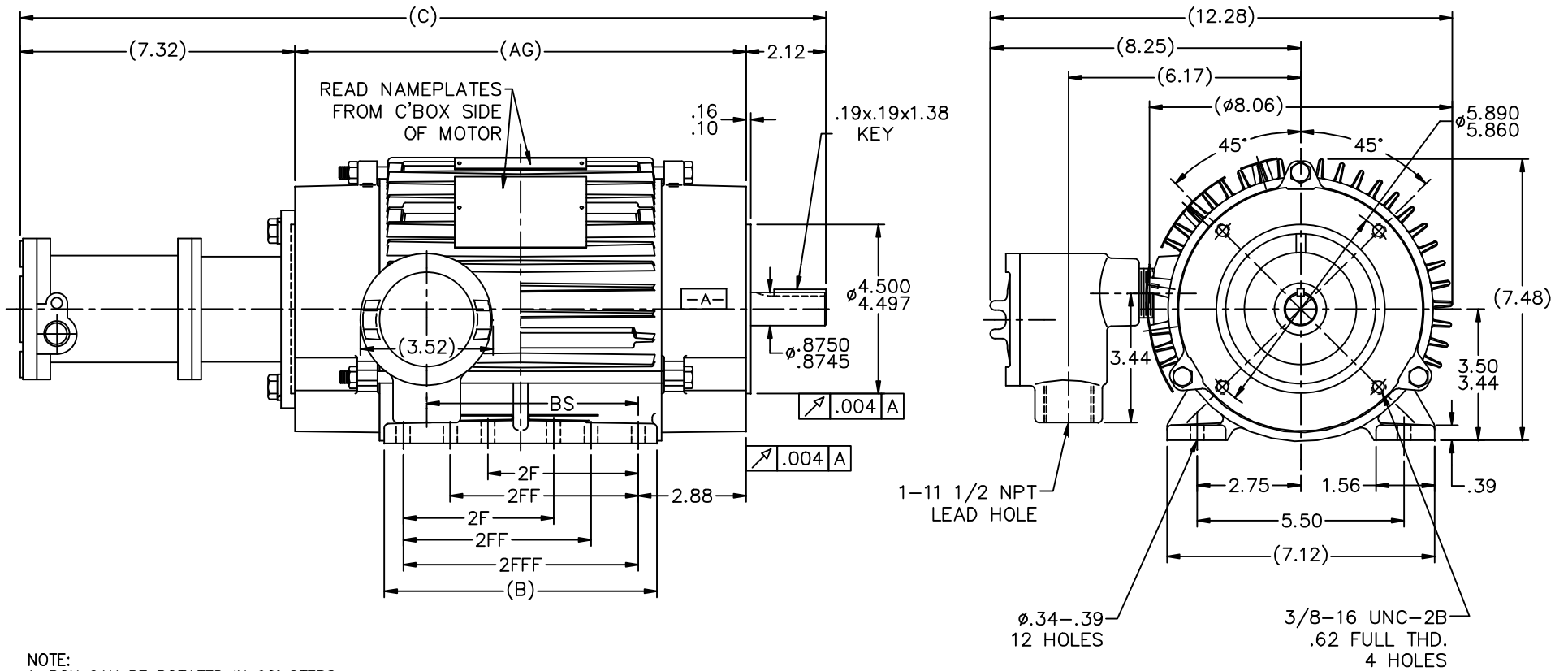
Holding Brake Ft. Lbs Coil Voltage Thermostats

Winding RTD'S Bearing RTD'S Ohms Type

Performance Data:

% of Rated Load	Efficiency	Power Factor	Amps
No Load			3.6 / 1.8
1/2 Load	84	54	
3/4 Load	85.5	66.5	
Full Load	85.5	74.8	5.8 / 2.9

Hazardous Location	
Division	I
Class	I and II
Group	CD, FG
Temp Code	T3B



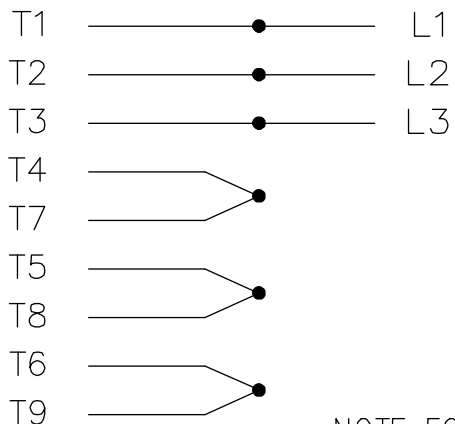
- NOTE:
 1. BOX CAN BE ROTATED IN 90° STEPS.
 2. BOX CAN BE MOUNTED ON OPPOSITE SIDE BY REMOVING BRACKETS & TURNING FRAME 180°.

		TOLERANCES UNLESS SPECIFIED				Rockwell Automation		DRAWN DRS 01-04-2001		
		DEC.	INCHES			Allen-Bradley		CHK	ML 01-05-2001	
3	UPDATED PER ISAAC 11-4672	RFH	01/11/2012	EH	.XX	±.03	TITLE OUTLINE - C'FACE	APPD	AJB 01-10-2001	
2	REVISED BASE DIM. IN TABLE CN29200-3157	TAT	09-04-2003	ML	.XXX	±.005	140TC FR. - EPNV - BEI H38 TACH.	REF	3=8	
1	NEW DRAWING MU34881	DRS	01-10-2001		.XXXX	±.0005	MAT'L	FMF		
NO.	REVISION	BY & DATE	CHK	ANG	±7'30"		FINISH	PREV		
THIS DRAWING IN DESIGN AND DETAIL IS OUR PROPERTY AND MUST NOT BE USED EXCEPT IN CONNECTION WITH OUR WORK ALL RIGHTS OF DESIGN AND INVENTION ARE RESERVED THIS IS AN ELECTRONICALLY GENERATED DOCUMENT - DO NOT SCALE THIS PRINT							RFP	CAD FILE 104881	SIZE	DRAWING NO. PAGE OF REV.
							DIST	WP	B	104881 3

DASH	FR.	C	AG	B	BS	2F	2FF	FFF
750	143/5	21.44	12.00	7.25	5.62	4.00	5.00	6.25

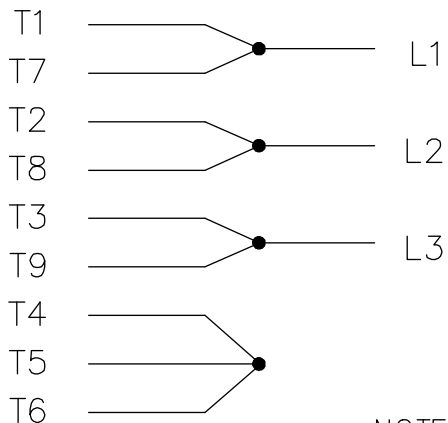
THREE PHASE
DUAL VOLTAGE MOTOR

HIGH VOLTAGE

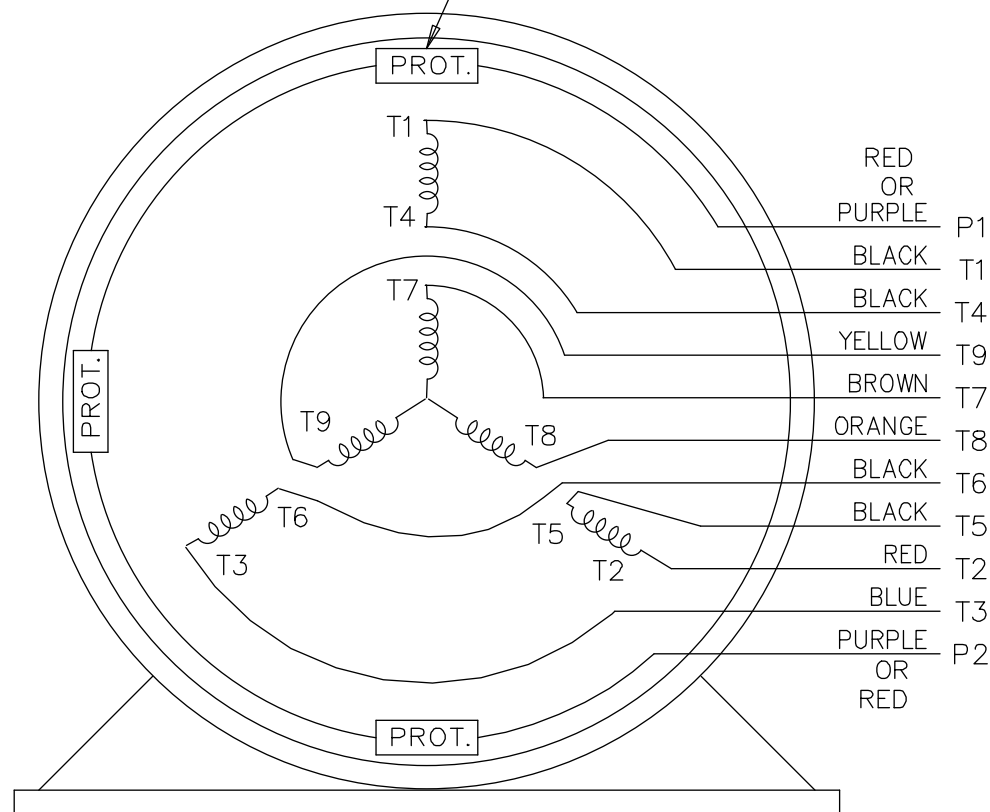


NOTE FOR FACTORY USE ONLY:
 TO SURGE TEST FOR COMMON CONNECT:
 HIGH VOLT: CONNECT P1 TO T1
 THEN P2 TO L1
 LOW VOLT: CONNECT P1 TO T1 & T7,
 THEN P2 TO L1

LOW VOLTAGE



THERMO-PROTECTORS
CONNECTED IN SERIES.



VIEW OF TERMINAL END

NOTE: LEAD'S COLOR CAN BE YELLOW OR WHITE FOR MT2 PLANT

13	NOTE ADDED	GR 06/20/13	AK	TOLERANCES UNLESS SPECIFIED			DRAWN SMC 05-13-1992			
12	P1 & P2 LEADS ADD'T COLOUR ADDED	UD 12/19/12	SR	DEC.	INCHES		CHK ML 05-13-1992			
11	ADDED COLORS TO "T & P" LEADS CN 40494	MSG 08-08-2006	ML	.X	±.1		APPD TB 05-13-1992			
10	ADDED SURGE TESTER NOTE - FOR FACTORY USE ONLY CN 24255	MH 06-03-1997		.XX	±.02		SCALE 1=1			
9	REDRAWN	SMC 05-15-1992		.XXX	±.005	TITLE CONNECTION DIAGRAM 3 PHASE - DUAL VOLTAGE MOTOR	REF			
NO.	REVISION	BY & DATE	CHK	ANG	±7'30"	MAT'L.	FMF			
						FINISH	PREV			
THIS DRAWING IN DESIGN AND DETAIL IS OUR PROPERTY AND MUST NOT BE USED EXCEPT IN CONNECTION WITH OUR WORK ALL RIGHTS OF DESIGN AND INVENTION ARE RESERVED THIS IS AN ELECTRONICALLY GENERATED DOCUMENT - DO NOT SCALE THIS PRINT			RFP	CAD FILE EE7308T			SIZE A	DRAWING NO. EE7308T	PAGE OF	REV. 13
			DIST WP							