

Rockwell
Automation



Allen-Bradley

Product Information Packet

Rockwell Automation

CM224-XV00518AXZCA

5HP,1800RPM,3PH,60HZ,213TC,EPNV

CM224-XV00518AXZCA

Motor Family

Torque Speed

Enclosure Code

Horsepower Load Type

Temp Rating Mount Type

Insulation Start Type

Duty Design Frame

Model # Y981

Voltage Usable at 208V

Base Speed Amps

CHP Speed Max Speed

Conduit Box Location Service Factor

Bearing Type: ODE Bearing

Grease DE Bearing

OPTIONS

Encoder PPR Tachometer Tach Voltage

Heater Blower Voltage

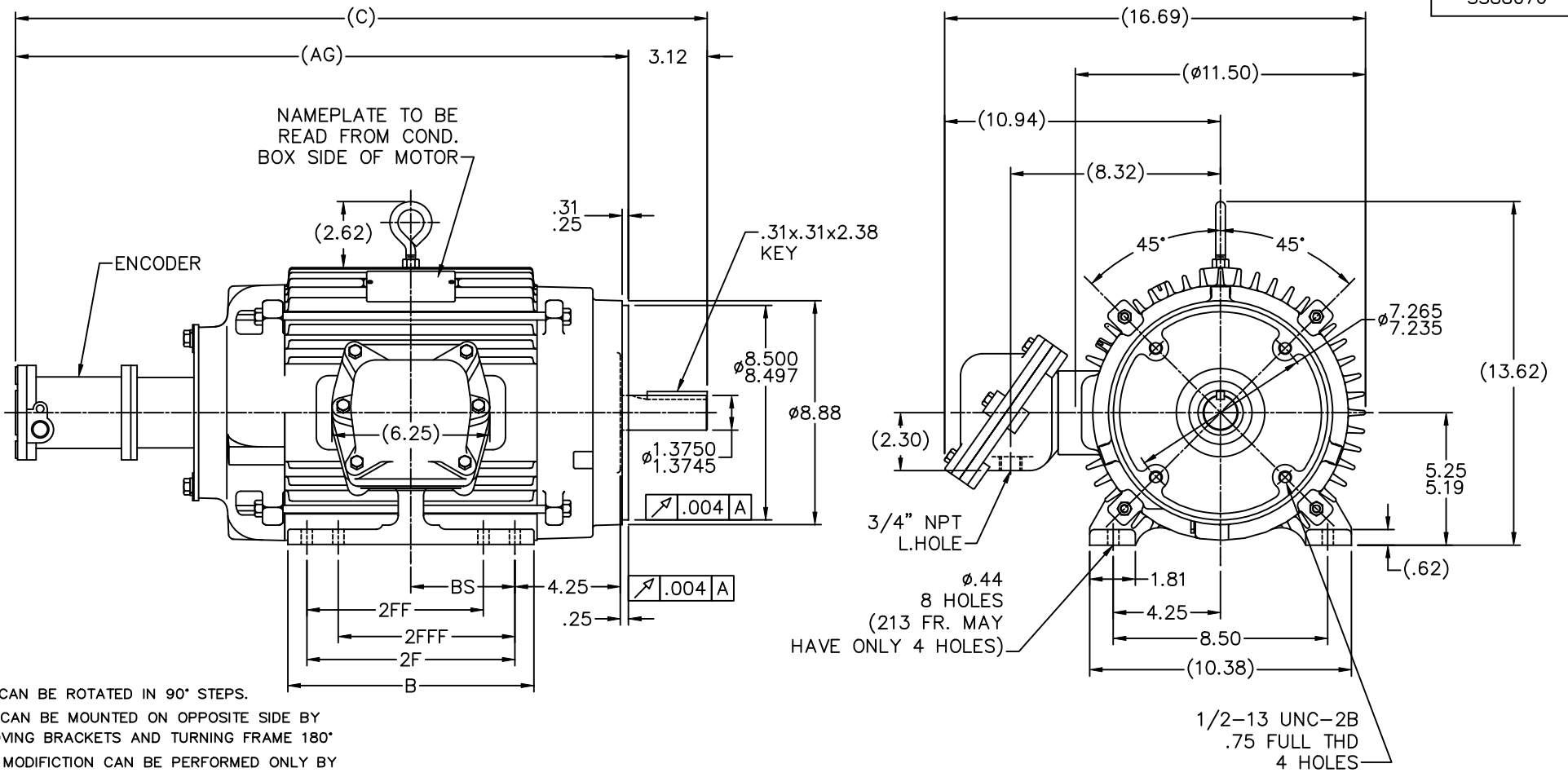
Holding Brake Ft. Lbs Coil Voltage Thermostats

Winding RTD'S Bearing RTD'S Ohms Type

Performance Data:

% of Rated Load	Efficiency	Power Factor	Amps
No Load			6 / 3
1/2 Load	88.5	63	
3/4 Load	90.2	74	
Full Load	90.2	79.5	13 / 6.5

Hazardous Location	
Division	I
Class	I and II
Group	D, FG
Temp Code	T3B



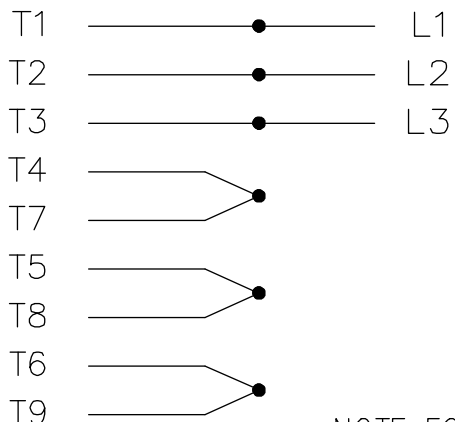
NOTES:

1. BOX CAN BE ROTATED IN 90° STEPS.
2. BOX CAN BE MOUNTED ON OPPOSITE SIDE BY REMOVING BRACKETS AND TURNING FRAME 180° THIS MODIFICATION CAN BE PERFORMED ONLY BY MARATHON ELECTRIC OR BY A FACILITY THAT IS COVERED UNDER UNDERWRITERS LABORATORIES INC.PTKQ,TITLED "MOTOR AND GENERATORS, REBUILT FOR USE ININ HAZARDOUS LOCATIONS".

DASH	FRAME	B	C	BS	2F	2FF	2FFF	AG	5	UPDATED DRAWING	TJW	05/04/2007	TOLERANCES UNLESS SPECIFIED		Rockwell Automation Allen-Bradley	DRAWN	CAV	03-16-2000						
									4	UPDATED THE NOTE.	ST	2/13/2007	AT	DEC.		INCHES	CHK	ML	03-20-2000					
									3	REDREW INTO AUTOCAD / CHANGED LOCATION				.X	±.1	APPD	PH	03-20-2000						
875	215TC	8.50	26.17	3.50	7.00	-	-	23.05		OF DIM. 2FFF CN 32877	RJW	10-20-2004	ML	.XX	±.02	TITLE	OUTLINE - EPNV	SCALE	1=4					
									2	CORRECTED BRACKET AND ADAPTED CN29200-1575	TJB	03-21-2001		.XXX	±.005	210T FR. - DBL. C'FACE W/BEI ENCODER	REF							
									1	NEW DRAWING MU29393	CAV	03-20-2000		.XXXX	±.0005	MAT'L		FMF						
									NO.	REVISION	BY & DATE	CHK	ANG	±7'30"	FINISH	PREV								
										THIS DRAWING IN DESIGN AND DETAIL IS OUR PROPERTY AND MUST NOT BE USED EXCEPT IN CONNECTION WITH OUR WORK ALL RIGHTS OF DESIGN AND INVENTION ARE RESERVED THIS IS AN ELECTRONICALLY GENERATED DOCUMENT - DO NOT SCALE THIS PRINT						RFP	CAD FILE	ss88076	SIZE	DRAWING NO.	PAGE	OF	REV.	
																	B	SS88076	5					

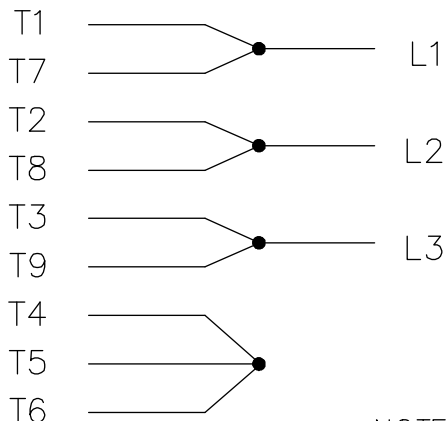
THREE PHASE
DUAL VOLTAGE MOTOR

HIGH VOLTAGE

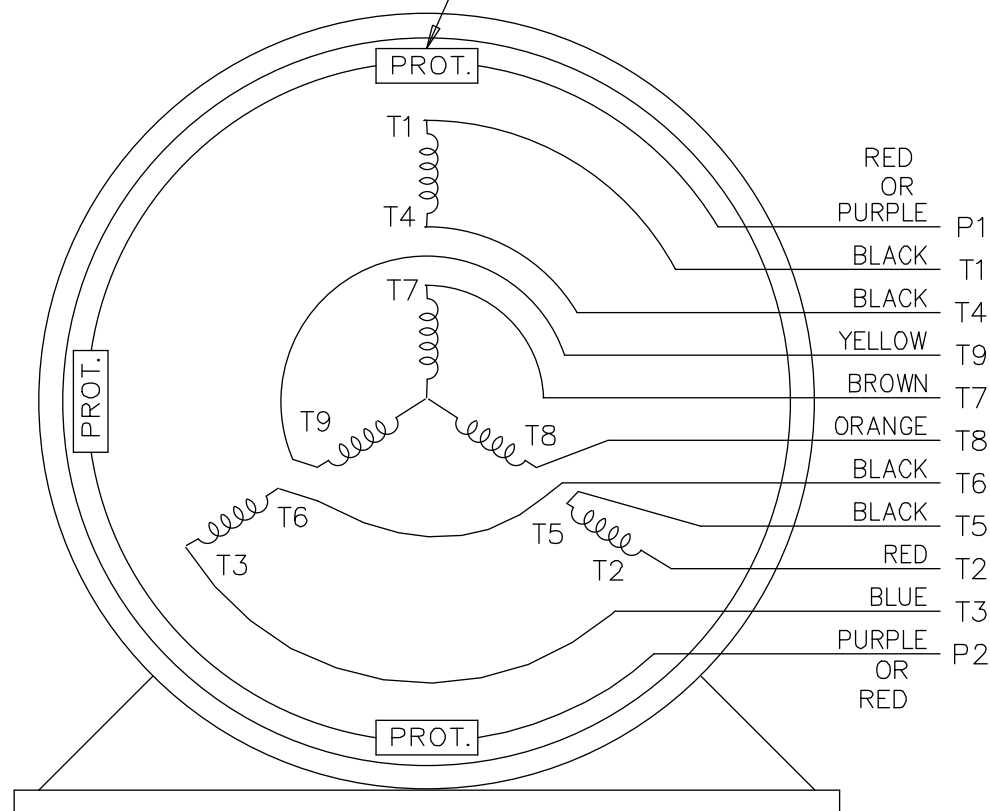


NOTE FOR FACTORY USE ONLY:
 TO SURGE TEST FOR COMMON CONNECT:
 HIGH VOLT: CONNECT P1 TO T1
 THEN P2 TO L1
 LOW VOLT: CONNECT P1 TO T1 & T7,
 THEN P2 TO L1

LOW VOLTAGE



THERMO-PROTECTORS
CONNECTED IN SERIES.



VIEW OF TERMINAL END

NOTE: LEAD'S COLOR CAN BE YELLOW OR WHITE FOR MT2 PLANT

13	NOTE ADDED	GR 06/20/13	AK	TOLERANCES UNLESS SPECIFIED			DRAWN SMC 05-13-1992			
12	P1 & P2 LEADS ADD'T COLOUR ADDED	UD 12/19/12	SR	DEC.	INCHES		CHK ML 05-13-1992			
11	ADDED COLORS TO "T & P" LEADS CN 40494	MSG 08-08-2006	ML	.X	±.1		APPD TB 05-13-1992			
10	ADDED SURGE TESTER NOTE - FOR FACTORY USE ONLY CN 24255	MH 06-03-1997		.XX	±.02		SCALE 1=1			
9	REDRAWN	SMC 05-15-1992		.XXX	±.005	TITLE CONNECTION DIAGRAM 3 PHASE - DUAL VOLTAGE MOTOR	REF			
NO.	REVISION	BY & DATE	CHK	ANG	±7'30"	MAT'L.	FMF			
						FINISH	PREV			
THIS DRAWING IN DESIGN AND DETAIL IS OUR PROPERTY AND MUST NOT BE USED EXCEPT IN CONNECTION WITH OUR WORK ALL RIGHTS OF DESIGN AND INVENTION ARE RESERVED THIS IS AN ELECTRONICALLY GENERATED DOCUMENT - DO NOT SCALE THIS PRINT			RFP	CAD FILE EE7308T			SIZE A	DRAWING NO. EE7308T	PAGE OF	REV. 13
			DIST WP							