

Rockwell
Automation



Allen-Bradley

Product Information Packet

Rockwell Automation

CM227-BK00518AXZCA

5HP,1800RPM,3PH,60HZ,184TC,TENV

CM227-BK00518AXZCA

Motor Family

Torque Speed

Enclosure Code

Horsepower Load Type

Temp Rating Mount Type

Insulation Start Type

Duty Design Frame

Model # Y989

Voltage Usable at 208V

Base Speed Amps

CHP Speed Max Speed

Conduit Box Location Service Factor

Bearing Type: ODE Bearing

Grease DE Bearing

OPTIONS

Encoder PPR Tachometer Tach Voltage

Heater Blower Voltage

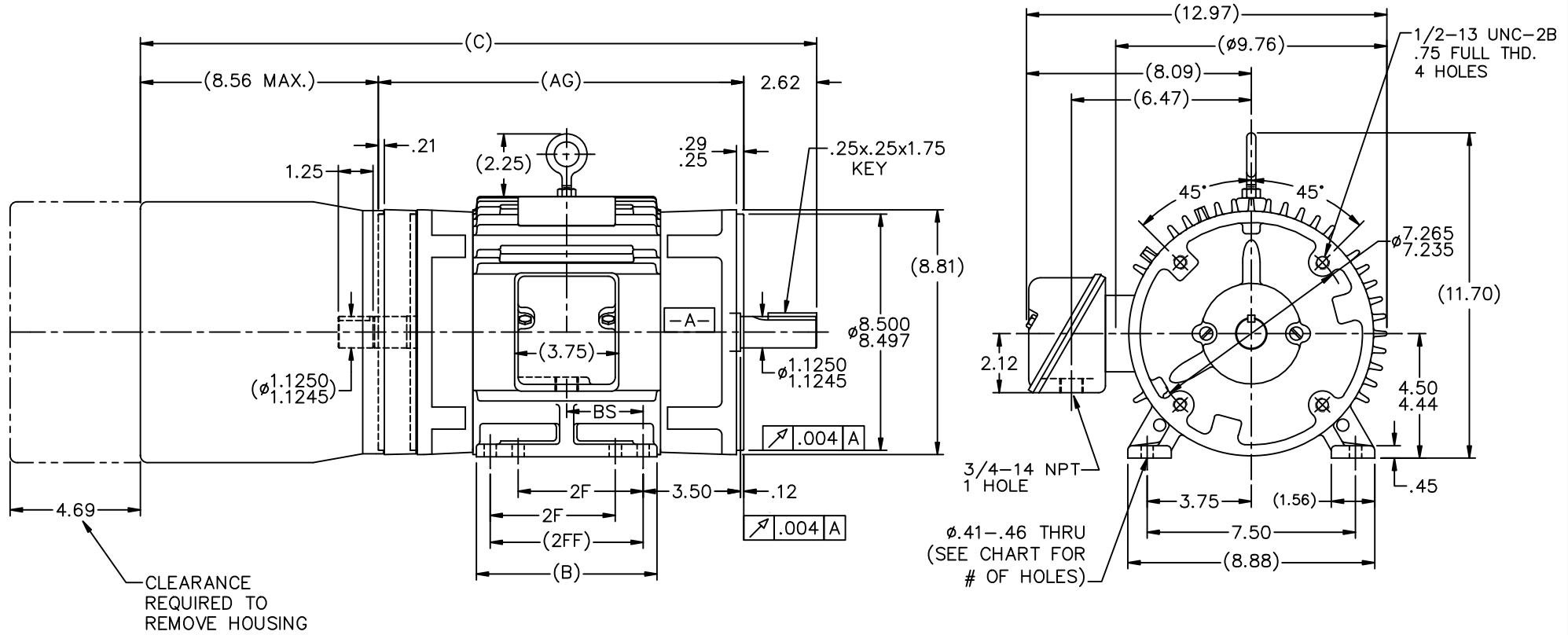
Holding Brake Ft. Lbs Coil Voltage Thermostats

Winding RTD'S Bearing RTD'S Ohms Type

Performance Data:

% of Rated Load	Efficiency	Power Factor	Amps
No Load			7 / 3.5
1/2 Load	88.5	59.0	
3/4 Load	89.5	72.0	
Full Load	88.5	79.0	13.4 / 6.7

Hazardous Location	
Division	
Class	
Group	
Temp Code	



DASH	FRAME	C	B	2F	2FF	BS	AG	MOUNTING	# OF HOLES
------	-------	---	---	----	-----	----	----	----------	------------

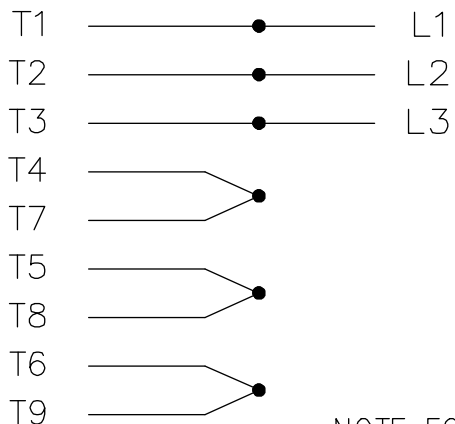
800	184TC	25.58	7.75	5.50	6.75	3.38	14.40	F1 OR F2	8
-----	-------	-------	------	------	------	------	-------	----------	---

- NOTES:
1. CONDUIT BOX CAN BE ROTATED IN 90° STEPS.
 2. CONDUIT BOX CAN BE MOUNTED ON OPPOSITE SIDE BY REMOVING BRACKETS AND TURNING FRAME 180°.
 3. NAMEPLATE TO BE READ FROM CONDUIT BOX SIDE OF MOTOR

5	UPDATED DRAWING	RJW 04-24-2007	UNLESS SPECIFIED	DEC.	INCHES	Rockwell Automation Allen-Bradley DRAWN DAH 06-19-2001 CHK ML 07-08-2001 APPD PH 07-10-2001 SCALE 1=3.5 REF FMF PREV
4	ADD HOLE # CHART/UPDATE LFT. VIEW CN32612	RWR 03/08/2004	.X	±.1		
3	UPDATE ODE SHAFT EXTENSION MU37306	DRS 08/17/2001	ML .XX	±.03	TITLE OUTLINE - 180FR. -CAST IRON C'BOX	
2	ADDED ENCODER DIA. MU37306	DAH 07/11/2001	ML .XXX	±.005	87000 BRAKE & PROV. FOR SL85 TACH.	
1	NEW DRAWING MU37306	DAH 07/10/2001	ML .XXXX	±.0005	MAT'L	
NO.	REVISION	BY & DATE	CHK	ANG	±1/2'	FINISH
THIS DRAWING IN DESIGN AND DETAIL IS OUR PROPERTY AND MUST NOT BE USED EXCEPT IN CONNECTION WITH OUR WORK ALL RIGHTS OF DESIGN AND INVENTION ARE RESERVED THIS IS AN ELECTRONICALLY GENERATED DOCUMENT - DO NOT SCALE THIS PRINT			RFP	ANG	±1/2'	FINISH
						CAD FILE ss69132
						SIZE B
						DRAWING NO. SS69132
						PAGE 1 OF 1
						REV. 5

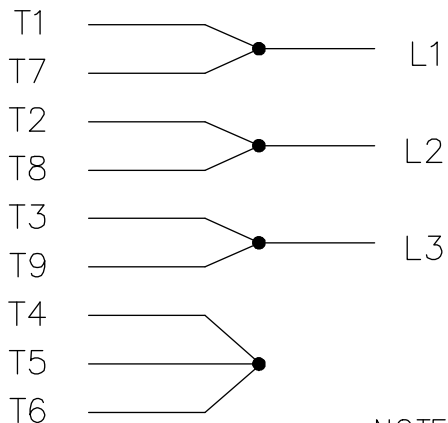
THREE PHASE
DUAL VOLTAGE MOTOR

HIGH VOLTAGE

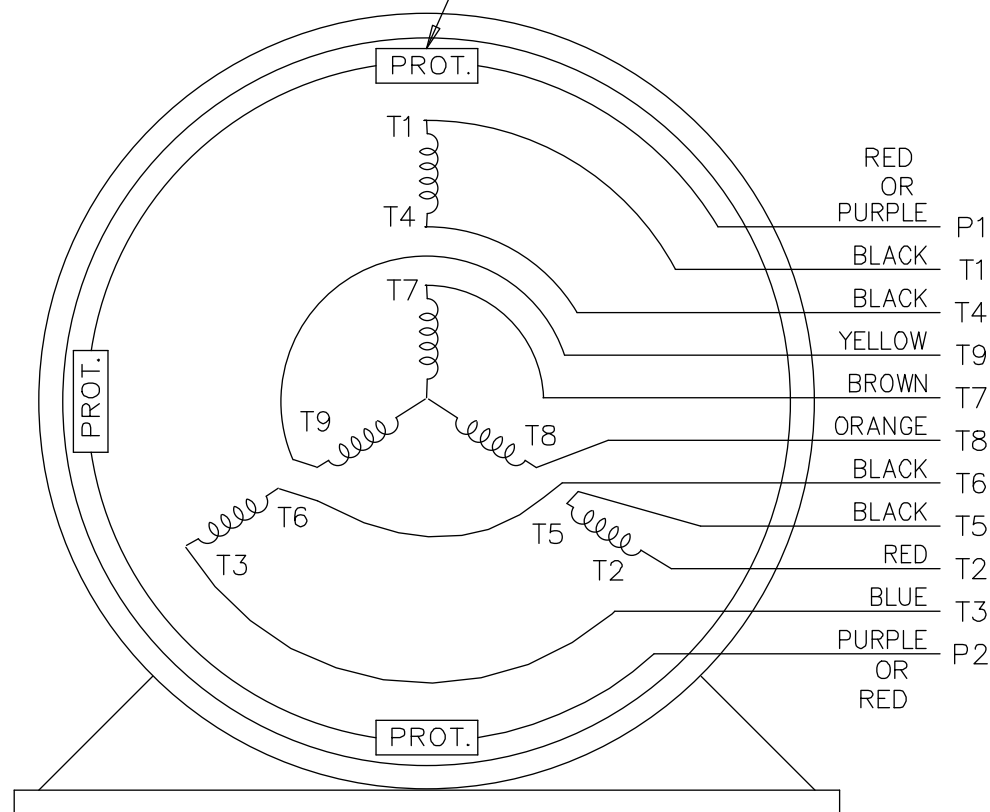


NOTE FOR FACTORY USE ONLY:
 TO SURGE TEST FOR COMMON CONNECT:
 HIGH VOLT: CONNECT P1 TO T1
 THEN P2 TO L1
 LOW VOLT: CONNECT P1 TO T1 & T7,
 THEN P2 TO L1

LOW VOLTAGE



THERMO-PROTECTORS
CONNECTED IN SERIES.



VIEW OF TERMINAL END

NOTE: LEAD'S COLOR CAN BE YELLOW OR WHITE FOR MT2 PLANT

13	NOTE ADDED	GR 06/20/13	AK	TOLERANCES UNLESS SPECIFIED			DRAWN SMC 05-13-1992			
12	P1 & P2 LEADS ADD'T COLOUR ADDED	UD 12/19/12	SR	DEC.	INCHES		CHK ML 05-13-1992			
11	ADDED COLORS TO "T & P" LEADS CN 40494	MSG 08-08-2006	ML	.X	±.1		APPD TB 05-13-1992			
10	ADDED SURGE TESTER NOTE - FOR FACTORY USE ONLY			.XX	±.02		SCALE 1=1			
	CN 24255	MH 06-03-1997		.XXX	±.005		REF			
9	REDRAWN	SMC 05-15-1992		.XXXX	±.0005	MAT'L.	FMF			
NO.	REVISION	BY & DATE	CHK	ANG	±7'30"	FINISH	PREV			
THIS DRAWING IN DESIGN AND DETAIL IS OUR PROPERTY AND MUST NOT BE USED EXCEPT IN CONNECTION WITH OUR WORK ALL RIGHTS OF DESIGN AND INVENTION ARE RESERVED THIS IS AN ELECTRONICALLY GENERATED DOCUMENT - DO NOT SCALE THIS PRINT			RFP	CAD FILE EE7308T			SIZE A	DRAWING NO. EE7308T	PAGE OF	REV. 13
			DIST WP							