

Rockwell
Automation



Allen-Bradley

Product Information Packet

Rockwell Automation

CM227-BK01518AXZCA

15HP,1800RPM,3PH,60HZ,254TC,TENV

CM227-BK01518AXZCA

Motor Family

Torque Speed

Enclosure Code

Horsepower Load Type

Temp Rating Mount Type

Insulation Start Type

Duty Design Frame

Model # Y992

Voltage Usable at 208V

Base Speed Amps

CHP Speed Max Speed

Conduit Box Location Service Factor

Bearing Type: ODE Bearing

Grease DE Bearing

OPTIONS

Encoder PPR Tachometer Tach Voltage

Heater Blower Voltage

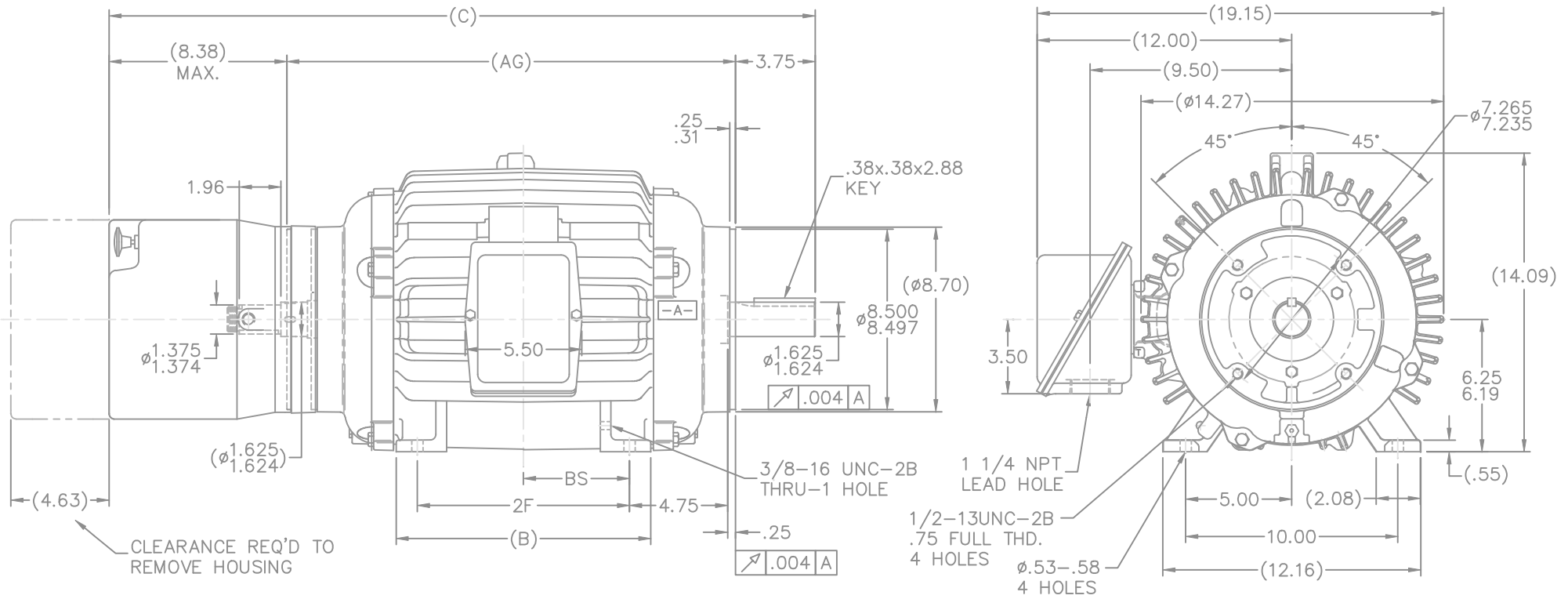
Holding Brake Ft. Lbs Coil Voltage Thermostats

Winding RTD'S Bearing RTD'S Ohms Type

Performance Data:

| % of Rated Load | Efficiency | Power Factor | Amps |
|-----------------|------------|--------------|-------------|
| No Load | | | 23.6 / 11.8 |
| 1/2 Load | 91.7 | 53.0 | |
| 3/4 Load | 93.0 | 66.5 | |
| Full Load | 93.0 | 74.5 | 40.5 / 20.2 |

| Hazardous Location | |
|--------------------|--|
| Division | |
| Class | |
| Group | |
| Temp Code | |



CLEARANCE REQ'D TO REMOVE HOUSING

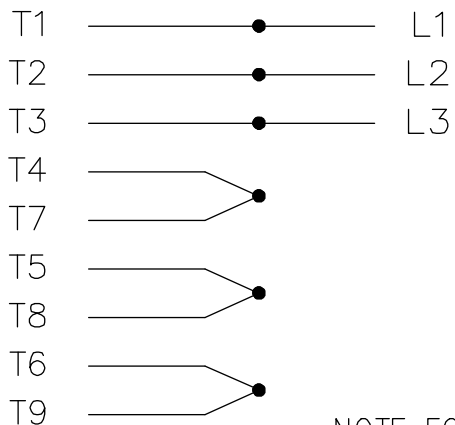
- NOTES:
1. BOX CAN BE ROTATED ON ITS AXIS.
 2. BOX CAN BE MOUNTED ON OPPOSITE SIDE BY REMOVING BRACKETS AND TURNING FRAME 180°
 3. NAMEPLATE TO BE READ FROM CONDUIT BOX SIDE OF MOTOR

| | | | | | | |
|------|-------|-------|-------|-------|------|------|
| 1050 | 254T | 31.53 | 19.40 | 10.25 | 8.25 | 4.12 |
| DASH | FRAME | C | AG | B | 2F | BS |

| | | TOLERANCES UNLESS SPECIFIED | | Rockwell Automation | | DRAWN DAH 06-15-2001 | | | | | |
|--|---------------------------------|-----------------------------|------------|---------------------|----------|----------------------|--------------------|----------------------|--------|------|--------|
| | | DEC. | INCHES | Allen-Bradley | | CHK | ML 06-15-2001 | | | | |
| 4 | REVISED, -154T WRONG - NOW 254T | TAT | 10-20-2005 | ML | .X | ±.1 | APPD BW 06-15-2001 | | | | |
| 3 | REDRAWN IN AUTOCAD | TAT | 06-24-2005 | DRS | .XX | ±.03 | SCALE 7=32 | | | | |
| 2 | UPDATED O.D.E. SHAFT EXTENSION | DRS | 08-17-2001 | | .XXX | ±.005 | REF | | | | |
| 1 | NEW DRAWING MU37310 | DAH | 06-15-2001 | | .XXXX | ±.0005 | FMF | | | | |
| NO. | REVISION | BY & DATE | CHK | ANG | ±7'30" | FINISH | PREV | | | | |
| THIS DRAWING IN DESIGN AND DETAIL IS OUR PROPERTY AND MUST NOT BE USED EXCEPT IN CONNECTION WITH OUR WORK ALL RIGHTS OF DESIGN AND INVENTION ARE RESERVED THIS IS AN ELECTRONICALLY GENERATED DOCUMENT - DO NOT SCALE THIS PRINT | | | | RFP | CAD FILE | ss203666 | SIZE B | DRAWING NO. SS203666 | PAGE 4 | OF 4 | REV. 4 |

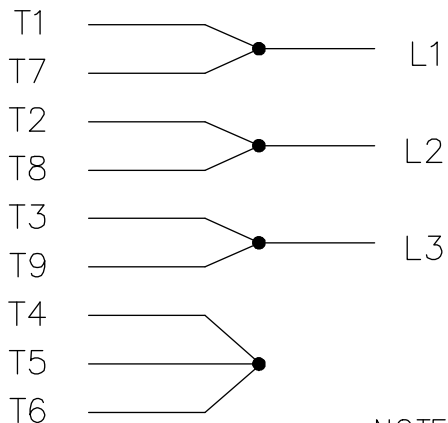
THREE PHASE
DUAL VOLTAGE MOTOR

HIGH VOLTAGE



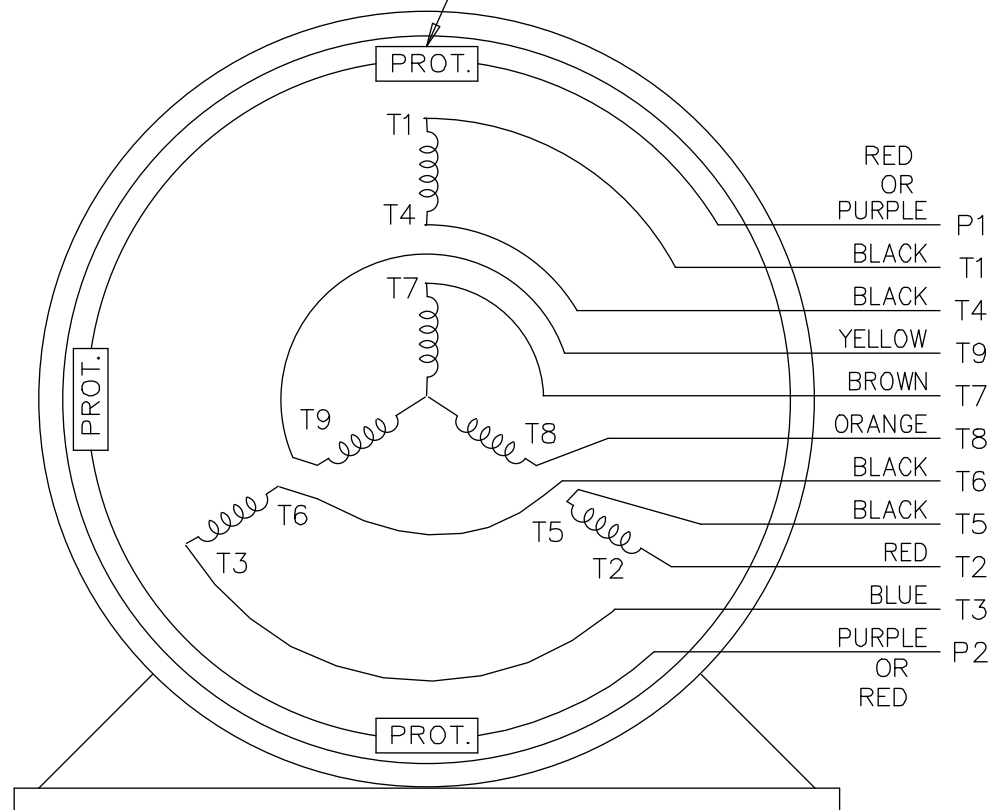
NOTE FOR FACTORY USE ONLY:
TO SURGE TEST FOR COMMON CONNECT:
HIGH VOLT: CONNECT P1 TO T1
THEN P2 TO L1
LOW VOLT: CONNECT P1 TO T1 & T7,
THEN P2 TO L1

LOW VOLTAGE



NOTE: LEAD'S COLOR CAN BE YELLOW OR WHITE FOR MT2 PLANT

THERMO-PROTECTORS
CONNECTED IN SERIES.



VIEW OF TERMINAL END

| | | | | | | | | | | |
|--|--|----------------|---------|--------------------------------|--------|--------|----------------------|---------------------|---------|---------|
| 13 | NOTE ADDED | GR 06/20/13 | AK | TOLERANCES UNLESS SPECIFIED | | | DRAWN SMC 05-13-1992 | | | |
| 12 | P1 & P2 LEADS ADD'T COLOUR ADDED | UD 12/19/12 | SR | DEC. | INCHES | | CHK ML 05-13-1992 | | | |
| 11 | ADDED COLORS TO "T & P" LEADS CN 40494 | MSG 08-08-2006 | ML | .X | ±.1 | | APPD TB 05-13-1992 | | | |
| 10 | ADDED SURGE TESTER NOTE - FOR FACTORY USE ONLY | | | .XX | ±.02 | | SCALE 1=1 | | | |
| | CN 24255 | MH 06-03-1997 | | .XXX | ±.005 | | REF | | | |
| 9 | REDRAWN | SMC 05-15-1992 | | .XXXX | ±.0005 | MAT'L. | FMF | | | |
| NO. | REVISION | BY & DATE | CHK | ANG | ±7'30" | FINISH | PREV | | | |
| THIS DRAWING IN DESIGN AND DETAIL IS OUR PROPERTY AND MUST NOT BE USED EXCEPT IN CONNECTION WITH OUR WORK ALL RIGHTS OF DESIGN AND INVENTION ARE RESERVED THIS IS AN ELECTRONICALLY GENERATED DOCUMENT - DO NOT SCALE THIS PRINT | | | RFP | CAD FILE EE7308T | | | SIZE A | DRAWING NO. EE7308T | PAGE OF | REV. 13 |
| | | | DIST WP | | | | | | | |