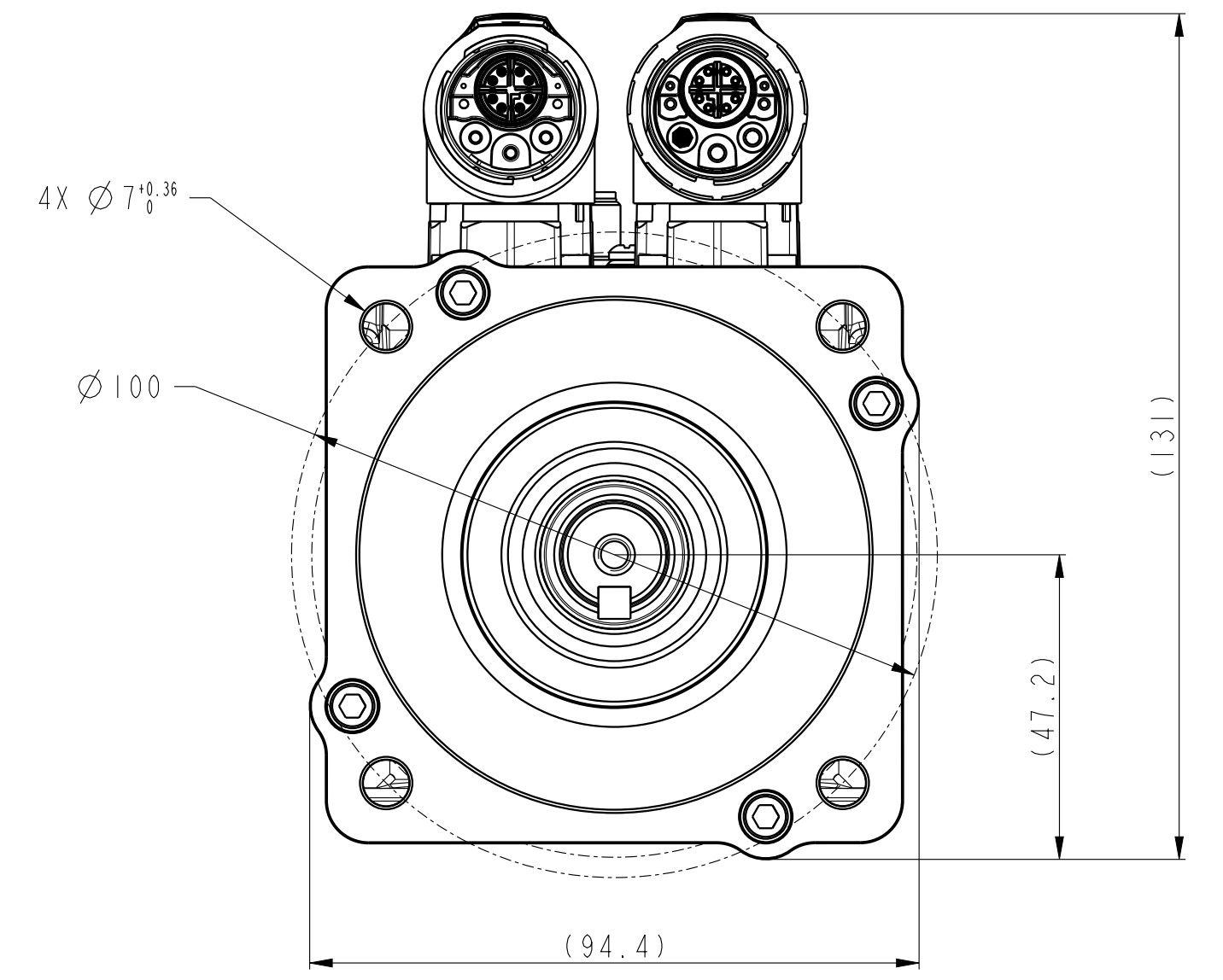
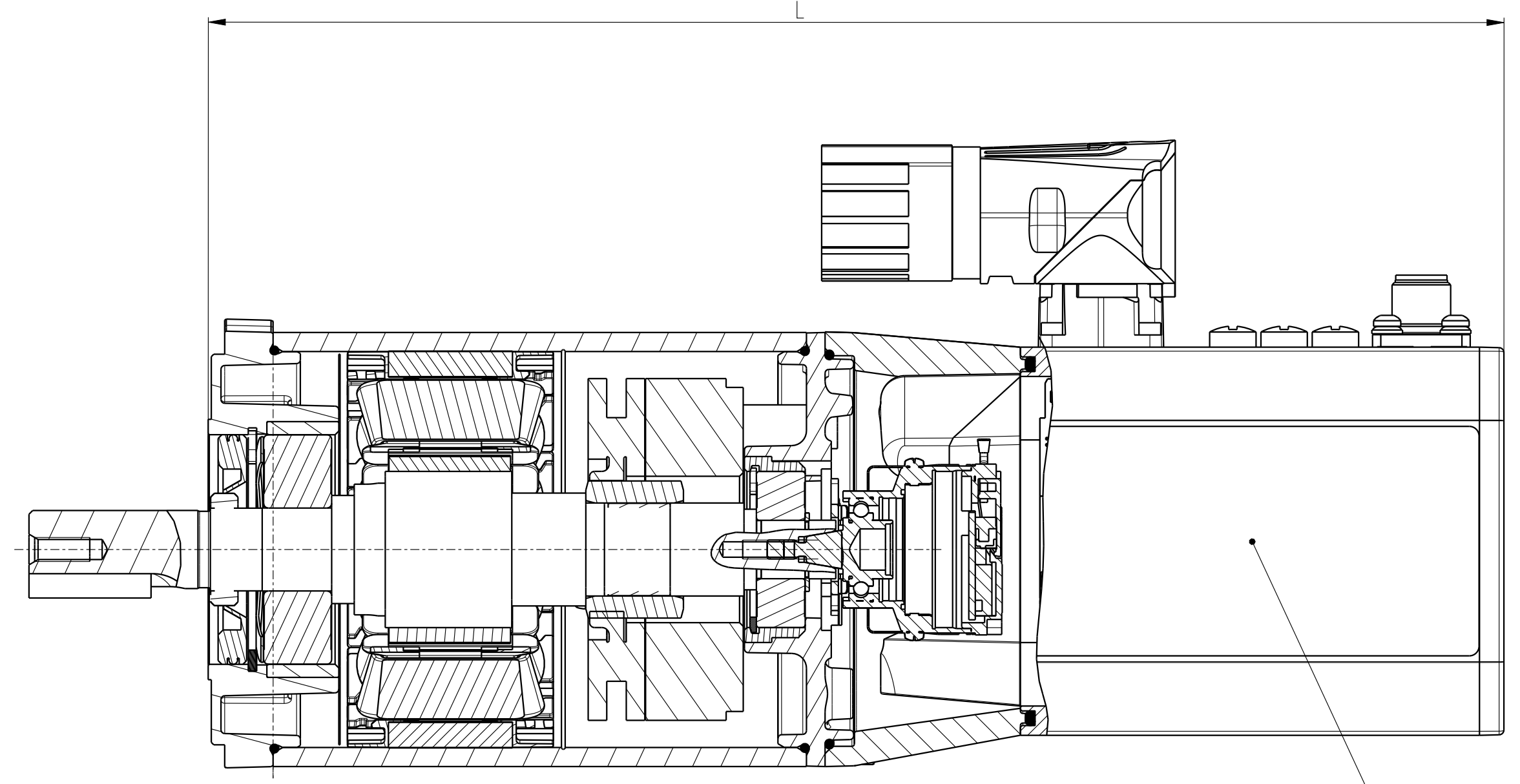
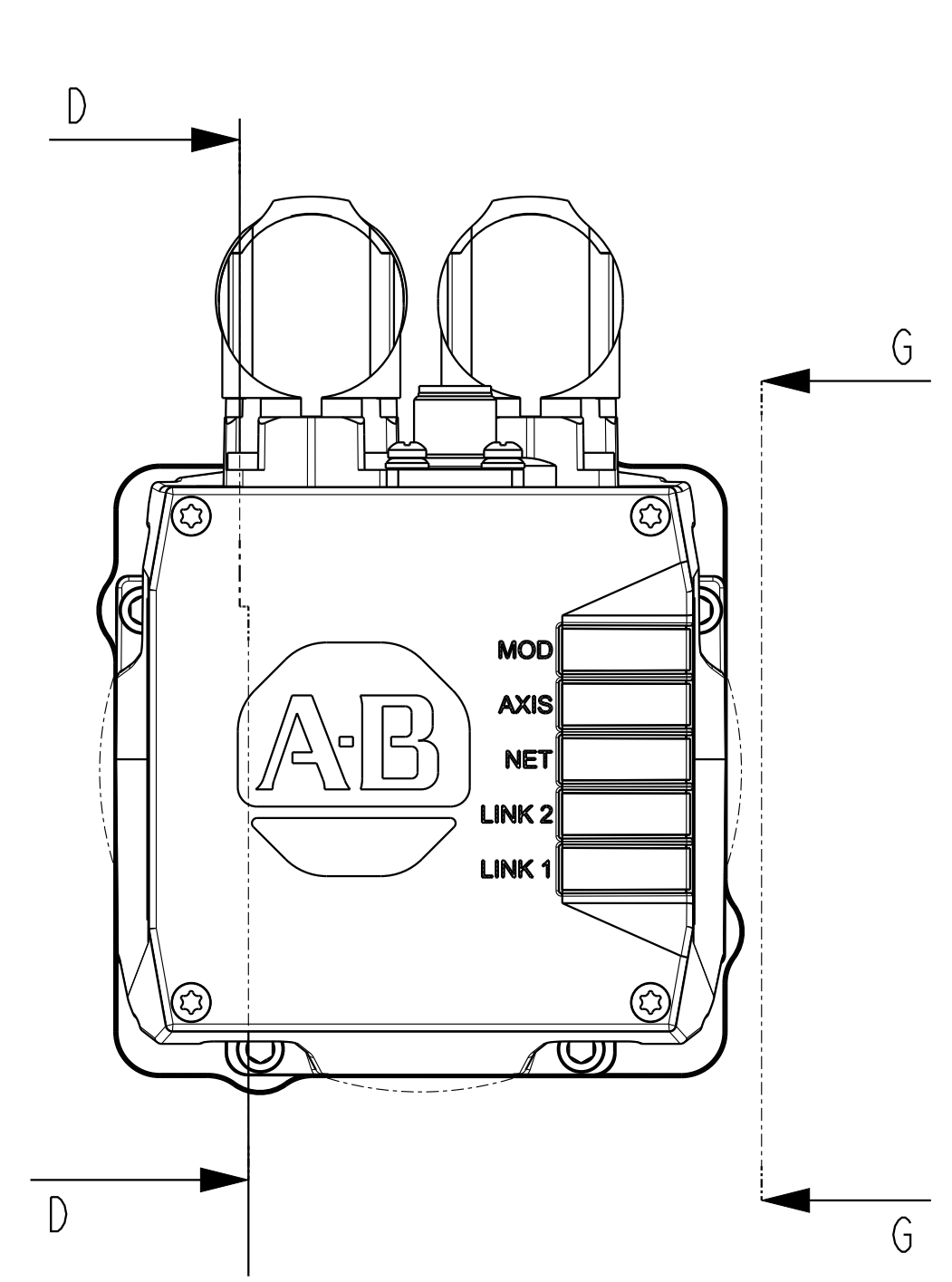


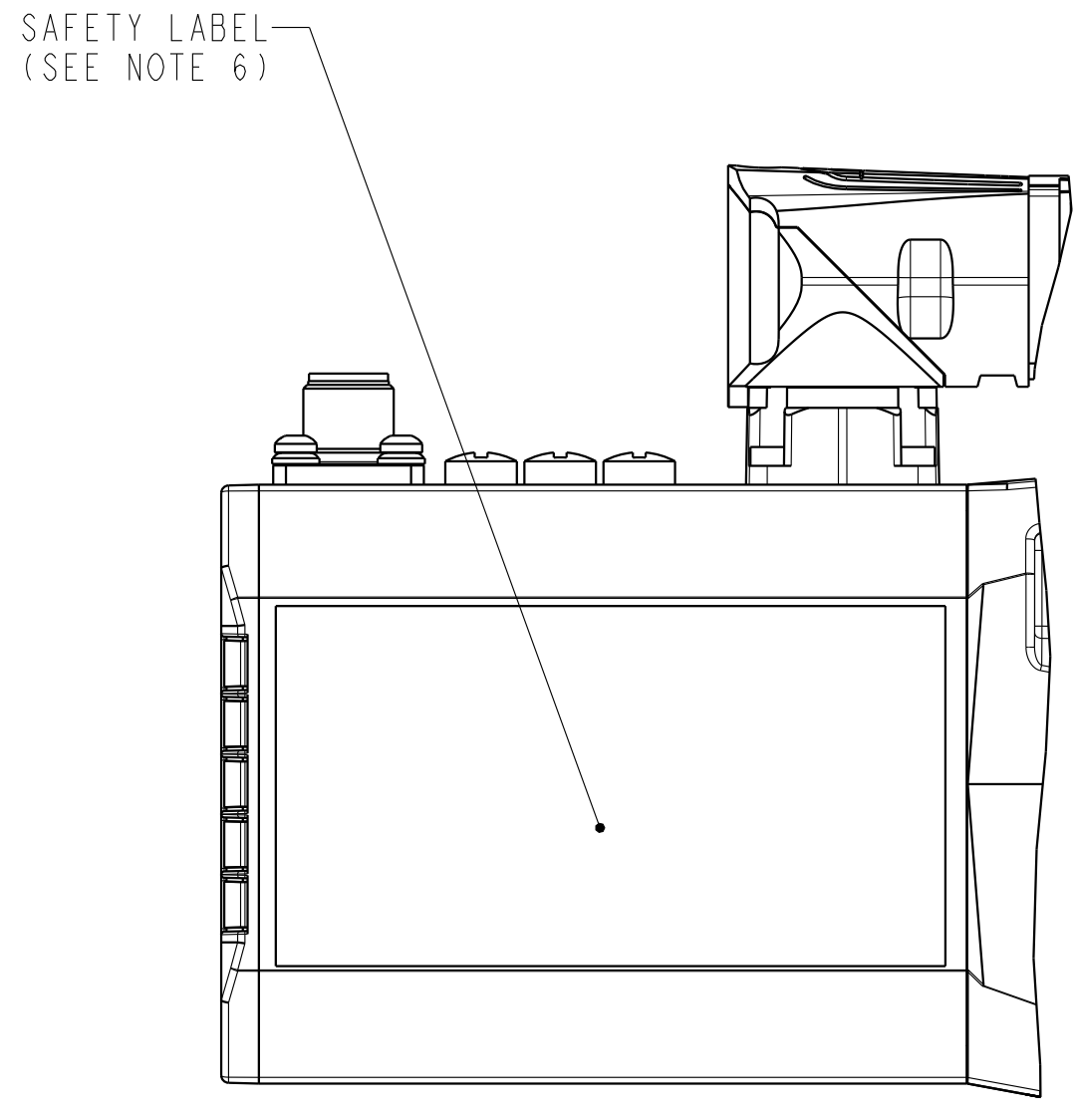
TORQUE TABLE					
PART NO	DESCRIPTION	TORQUE (N-M)	TORQUE (IN-LBS)	TOL ±	QTY
19-10131-011	SCREW,CAP,SOC,HEX,ST,8-32x0.75,CHMK	3.39	30	10%	4
PN-642803	SCREW,FLAT,6LOBE,ST,M3x0.5x107,ZN PLATE	1.3	11.5	10%	4

MOTOR MAGNET STACK LENGTH	L
1	261.9
2	287.3
3	312.7

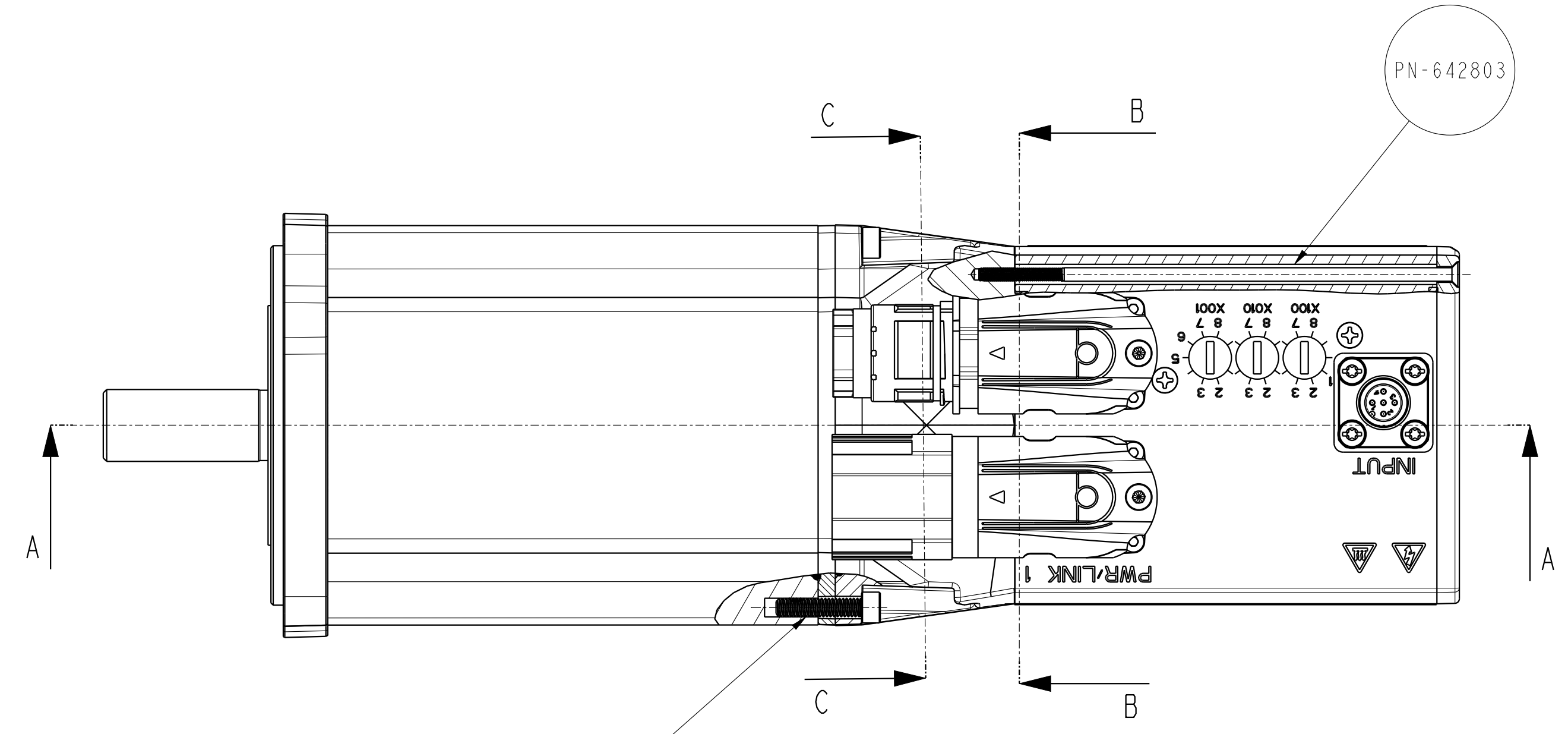
CRITICAL TO QUALITY CLASSIFICATION TABLE				
P=PERFORMANCE, F=FIT, A=ASSEMBLY X=IDENTIFIES APPLICABLE CLASSIFICATION(S) ⊕=ENGINEERING AND/OR MANUFACTURING REQUIREMENT Ⓢ=REGULATORY REQUIREMENT-CONFORMANCE IS MANDATORY				
COMMENTS	DRAWING ZONE	P	F	A
ROHS	H1			X



A-A
1:1
DATA NAMEPLATE (SEE NOTE 6)



G-G
1:1



19-10131-011

PN-642803

- NOTES:
- 1) ASSEMBLE USING FIXTURE DIR 10006509034
 - 2) PACKAGE: PN-638985
 - 3) SHORTEST MOTOR STACK LENGTH SHOWN, SEE TABLE (ZONE A7) FOR ALL LENGTH VARIANTS
 - 4) VPL DRAWING: 10000183120
 - 5) DSx DRAWING: 10006487275
 - 6) LABELS AND MARKINGS PRINTED WITH DIGITAL INK JET

MUST COMPLY WITH ROCKWELL AUTOMATION ENVIRONMENTAL SPECIFICATION 970-20-01

ALL UNDIMENSIONED GEOMETRIES ARE CONTROLLED BY THE CAD MODEL. IN CASE OF DIMENSION DISCREPANCY, CAD MODEL OVERRIDES.

FIRST ANGLE PROJECTION



INSTR,DSM-100,BRAKE

DESCRIPTION

CREATED BY: JZDONEK

CHANGED BY: FMACIEJOWSKI

CONFIDENTIAL AND PROPRIETARY INFORMATION. THIS DOCUMENT CONTAINS CONFIDENTIAL AND PROPRIETARY INFORMATION OF ROCKWELL AUTOMATION, INC. AND MAY NOT BE USED, COPIED OR DISCLOSED TO OTHERS, EXCEPT WITH THE AUTHORIZED WRITTEN PERMISSION OF ROCKWELL AUTOMATION, INC.

DATE: 2023-02-17 SHEET 1 OF 2

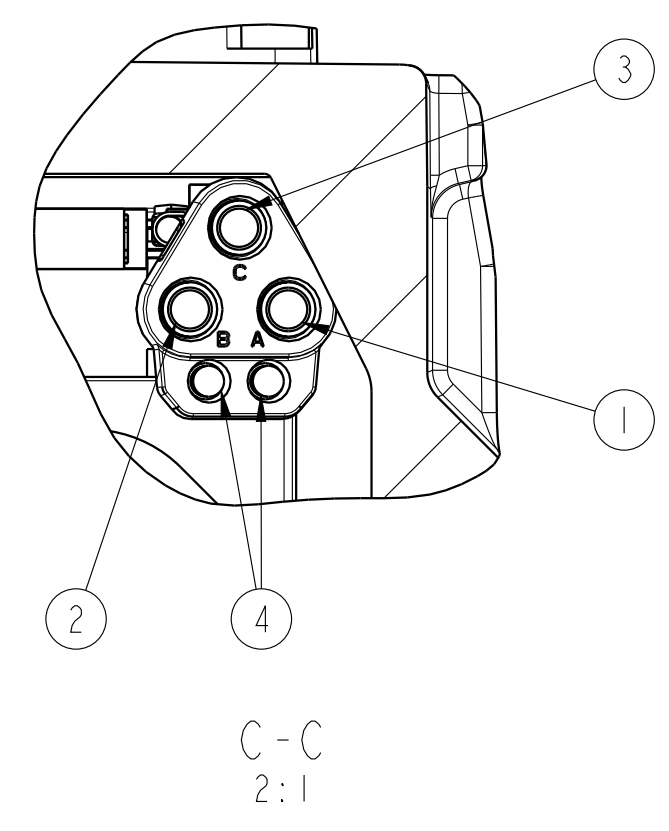
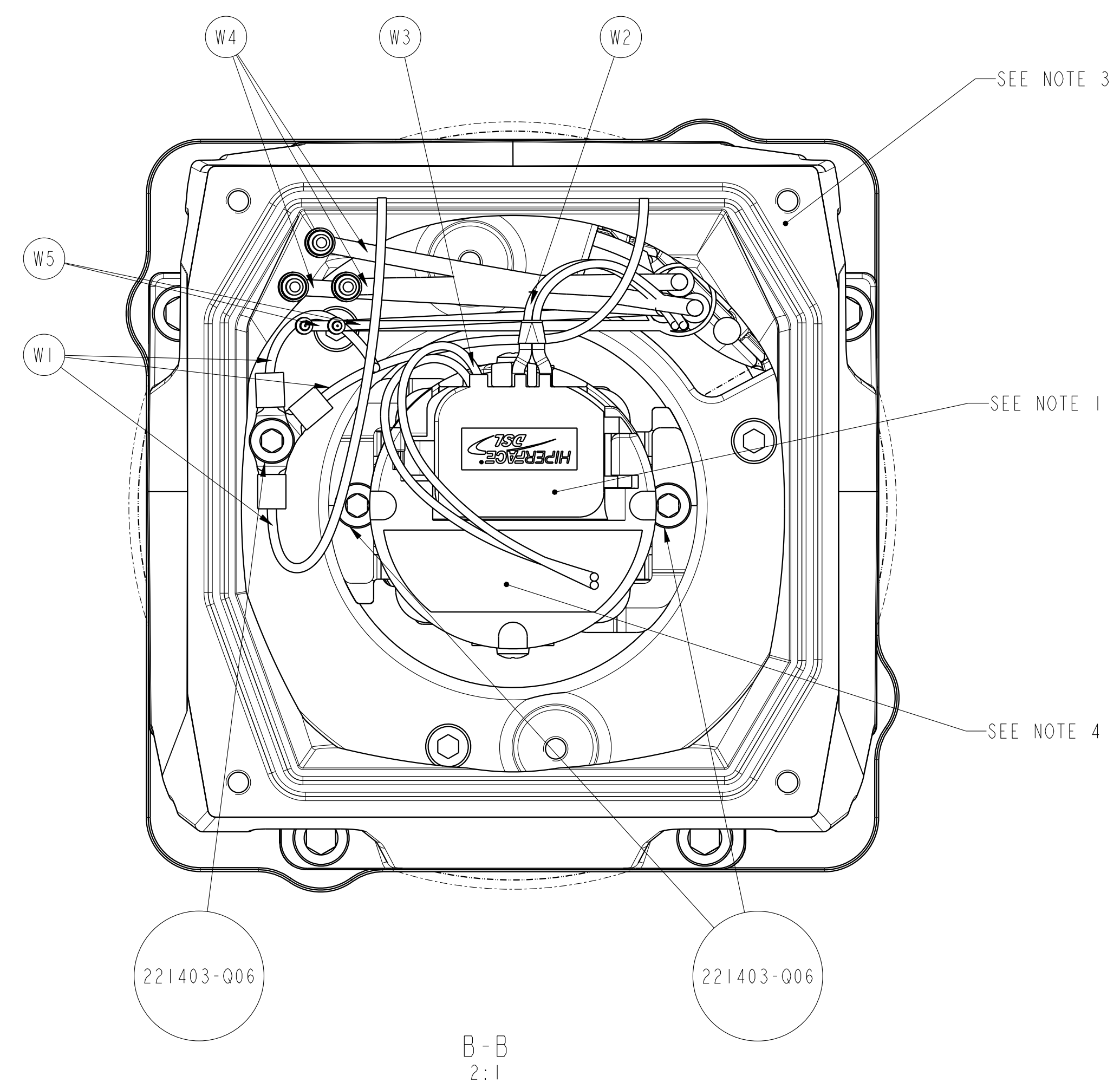
SIZE	DIR	VER
A1	10006789990	02

TORQUE TABLE					
PART NO	DESCRIPTION	TORQUE (N-M)	TORQUE (IN-LBS)	TOL ±	QTY
221403-006	SCREW,CAP,SOC,6LOBE,CS,M3x0.5x6,THLK	0.8	7.1	10%	3
PN-434221, PN-434220	ENCODER 'P' / 'C' SHAFT MOUNTING THREAD	4.0	35.4	5%	1
PN-W03597	ENCODER 'T' SCREW,MACH,Cap,HEXALOB (TORX),SS	3.1	27.4	10%	1
PN-W03560	ENCODER 'T' CAP SCREW T08	0.5	4.4	10%	1

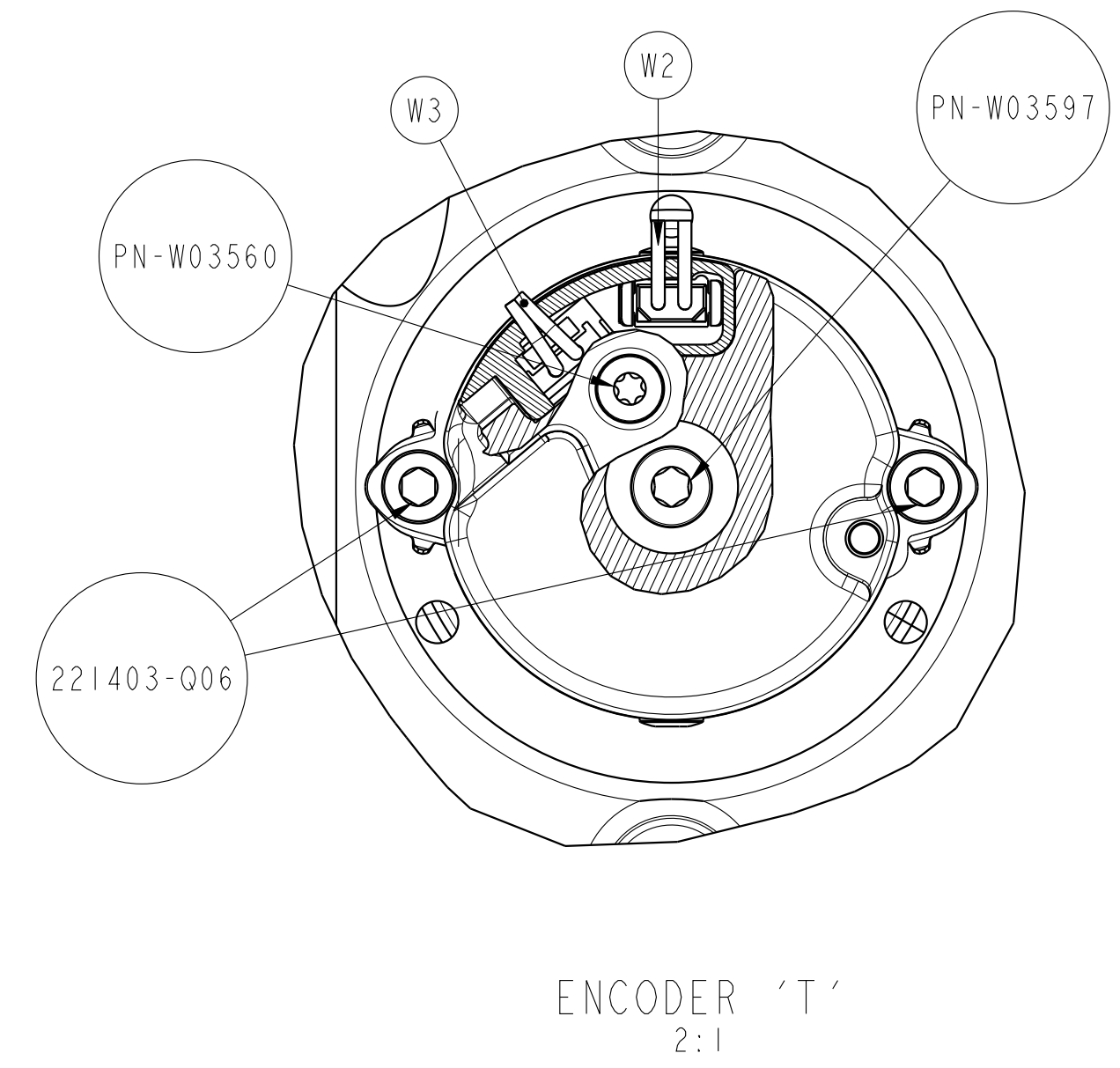
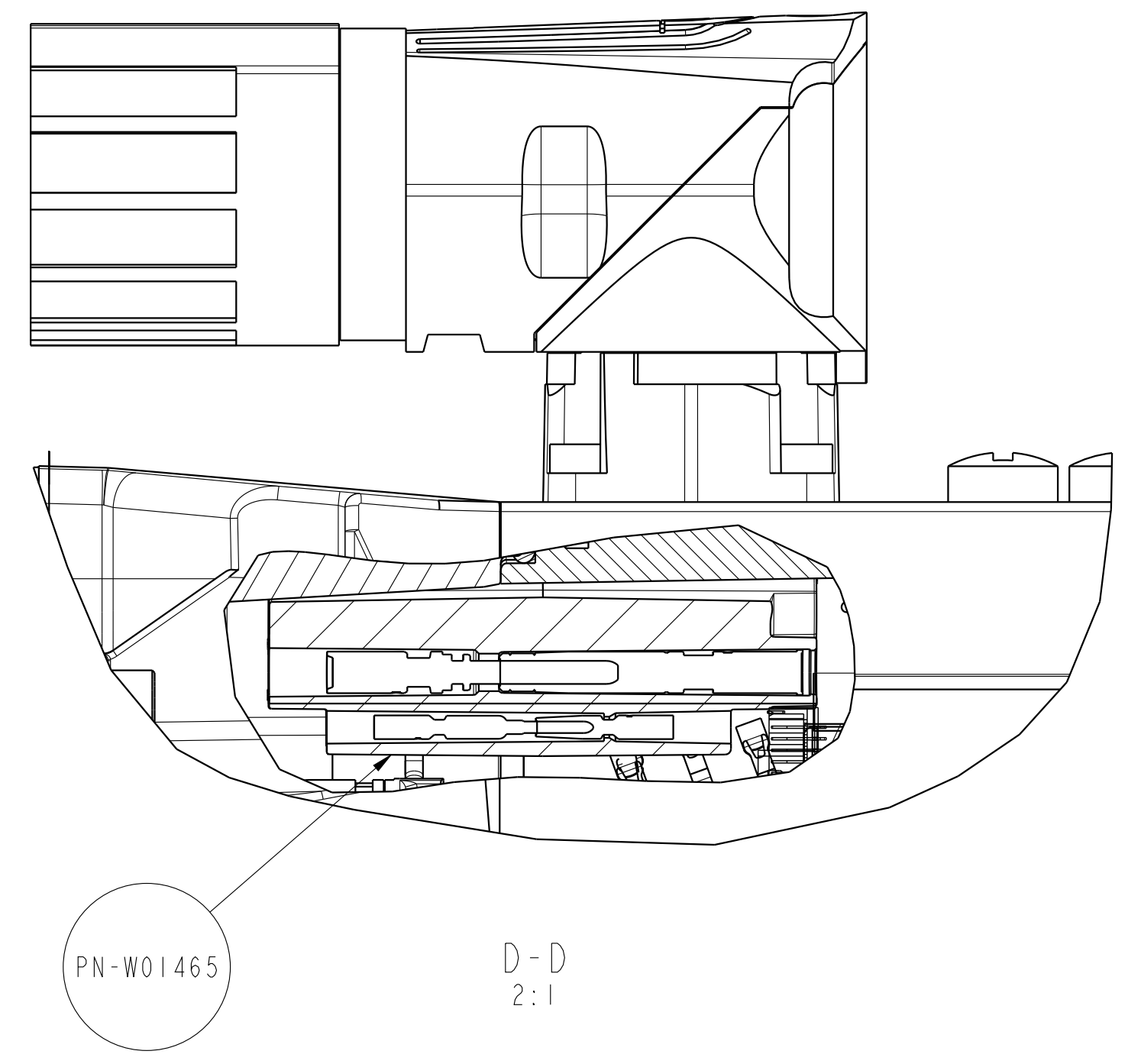
DSM WIRES CONNECTIONS			
DESCRIPTION	FROM	TO	MARKING
GROUND WIRES	DSX	MOTOR	W1
THERMISTOR WIRES	MOTOR	ENCODER	W2
FEEDBACK WIRES	DSX	ENCODER	W3
UVW WIRES	MOTOR	PN-W01465	W4
BRAKE WIRES	MOTOR	PN-W01465	W5

ENCODER SYMBOL	STANDART/SAFETY	ENCODER PN
C	STANDARD	PN-434221
P	STANDARD	PN-434220
T	SAFETY	PN-W03560

CRITICAL TO QUALITY CLASSIFICATION TABLE				
P=PERFORMANCE, F=FIT, A=ASSEMBLY X=IDENTIFIES APPLICABLE CLASSIFICATION(S) ⊕=ENGINEERING AND/OR MANUFACTURING REQUIREMENT Ⓢ=REGULATORY REQUIREMENT-CONFORMANCE IS MANDATORY				
COMMENTS	DRAWING ZONE	Ⓢ	⊕	Ⓢ
ROHS	H1			X
NOTE 3	G6	X		



PN-W01465 CONNECTIONS			
NO	FUNCTION	COLOR	SLOT MARKING
1	U	RED	A
2	V	BLACK	B
3	W	BLUE	C
4	BRAKE	WHITE	NONE



- NOTES:
- 1) OPEN ENCODER COVER AND CONNECT THERMISTOR WIRES (W2) AND FEEDBACK WIRES (W3)
 - 2) INSERT WIRES TO ENCODER SLOT CAREFULLY, DO NOT BEND
 - Ⓢ 3) PAINT SHALL NOT BE ON THIS SURFACE
 - 4) ENCODER 'C'/'P' SHOWN, SEE TABLE (ZONE A7) FOR ALL ENCODER MODELS

		<small>CONFIDENTIAL AND PROPRIETARY INFORMATION. THIS DOCUMENT CONTAINS CONFIDENTIAL AND PROPRIETARY INFORMATION OF ROCKWELL AUTOMATION, INC. AND MAY NOT BE USED, COPIED OR DISCLOSED TO OTHERS, EXCEPT WITH THE AUTHORIZED WRITTEN PERMISSION OF ROCKWELL AUTOMATION, INC.</small>	
		INSTR,DSM-100,BRAKE *****	DATE:2023-02-17 SIZE DIR A1
CREATED BY: JZDONEK	CHANGED BY: FMACTEJOWSKI		