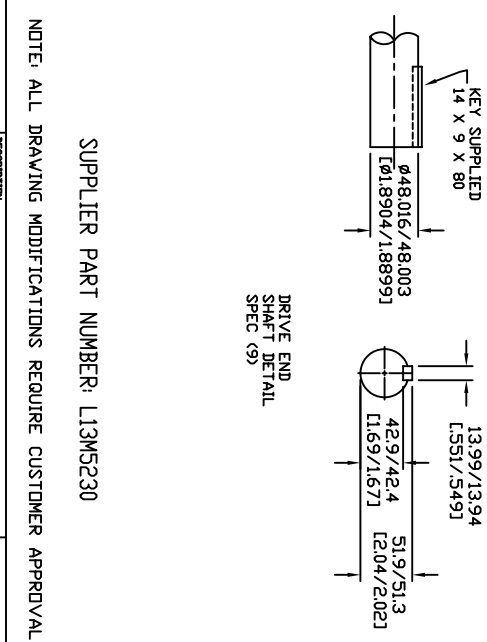


- SPECIFICATIONS:**
- 1. MOTOR INFORMATION  
MOTOR TYPE: VARIABLE SPEED AC  
FRAME SIZE: RDL1307Y  
RATING: 17.1 KW  
VOL TAG: 460  
ENCLOSURE: TOTALLY ENCLOSED IP54  
MOUNTING: FLANGE (300mm BOLT CIRCLE)  
COOLING: BLOWER COOLED IC416  
DRIVE METHOD: COUPLED OR BELTED ACCESSORIES: ENCODER
  - 2. CONTINUOUS STALL TORQUE: 112 Nm  
MAX AT 155°C WINDING TEMPERATURE, IN A 40°C AMBIENT
  - 3. OPERATING SPEED: 1500 BASE SPEED / 3000 RPM MAX.
  - 4. 1024 SINUSOID/REV ENCODER, WITH MULTI-TURN ABSOLUTE POSITION DATA
  - 5. FOR ADDITIONAL SPECIFICATIONS SEE 10000000232
  - 6. SHAFT HEIGHT WILL NOT BE EXCEEDED SHIMS UP TO 0.5 MM IN THICKNESS USUALLY REQUIRED FOR COUPLED OR GEARED MACHINES.
  - 7. SHAFT EXTENSIONS ARE ACCORDING TO DIN 748. TOLERANCES ARE BASED ON THE ISA FITTING SYSTEM USING H6 FOR DIAMETERS UP TO 50MM AND H6 FOR DIAMETERS ABOVE.
  - 8. MAX SHAFT TIR .06 (0002)  
MAX FACE TIR .13 (0051)
  - 9. MOTOR WEIGHT 153 KG. [337 LBS] (MAY VARY 15%)

BLOWER CONNECTION		ENCODER CONNECTION	
LEAD	460 VOL TS	LEAD	460 VOL TS
U1	R	U1	R
V1	S	V1	S
W1	T	W1	T
W2	T	W2	T
W2	T	W2	T
W2	T	W2	T
GRN/VEL	GROUND	GRN/VEL	GROUND
DELTA CONNECTION		DELTA CONNECTION	
LEAD	290 VOL TS	LEAD	290 VOL TS
U1	R	U1	R
V1	S	V1	S
W1	T	W1	T
W2	T	W2	T
GRN/VEL	GROUND	GRN/VEL	GROUND
PIN-OUT		ENCODER CONNECTION	
LEAD	460 VOL TS	PIN	FUNCTION
U1	R	A	SIN +
V1	S	B	SIN -
W1	T	C	COS +
W2	T	D	COS -
GRN/VEL	GROUND	E	DATA +
DELTA CONNECTION		F	DATA -
LEAD	290 VOL TS	G-M	-
U1	R	N	+9 VDC
V1	S	P	COM
W1	T	R	TS +
W2	T	S	TS -
GRN/VEL	GROUND	T-V	-

MOTOR CONNECTION	
LEAD	TERMINAL BOX SOURCE
U1	L1
V1	L2
W1	L3
GRN/VEL	GROUND



**REFERENCES**

VERSION/CHANGE NUMBER	TOLERANCES UNLESS OTHERWISE SPECIFIED
	DID NOT SCALE DRAWING
	DIMENSIONS ARE IN MILLIMETERS WITH INCHES REFERENCED UNLESS OTHERWISE NOTED
	ALL DIMENSIONS ARE UNLESS OTHERWISE SPECIFIED
	ANGLE PROJECTION

**DESCRIPTION**

HPK-B1307C-MA42AA,ESM

**CAD DOCUMENT**

Rockwell Automation

Allen-Bradley

DR. GWS DATE 08-15-06 SHEET 1 OF 1

DXF FILE AVAILABLE

DWG. DOCUMENT NUMBER: 10000000250

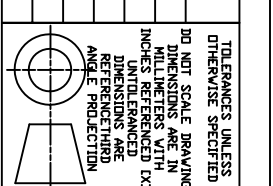
52 [2.061] 806 [31.771] 190 [7.481] 91 [3.571] 154 [6.061] 333 [13.111] 187 [7.381] 95 [3.751] 57 [2.231] 110 [4.331] 89 [3.501] 17 [0.661] 5 [0.201]

MIN. AIR SPACE

ENCODER CONNECTOR

LEAD HOLES PG29 & PG16 ROTATABLE IN 90° INCREMENTS

TERMINAL BOX BLOWER COOLED ONLY



279 [11.001] 350 [13.771] 104 [4.111] 53 [2.091] 108 [4.251] 108 [4.251] 260 [10.251] 262 [10.311] 132 [5.191] SPEC (8)

12 DIA.

300 B.C.

111.81

Ø250.00 +0.02/-0.01

Ø98.43 +0.01/-0.01

SPEC (10)

NOTE: ALL DRAWING MODIFICATIONS REQUIRE CUSTOMER APPROVAL

SUPPLIER PART NUMBER: L13MS230