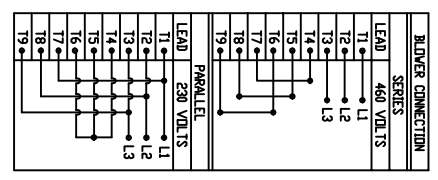


**SPECIFICATIONS:**

- MOTOR INFORMATION**  
MOTOR TYPE: VARIABLE SPEED AC  
FRAME SIZE: RDL1307Y  
RATING: 298 KW  
VOLTAGE: 460  
ENCLOSURE: TOTALLY ENCLOSED IP54  
MOUNTING: FLANGE (350mm BOLT CIRCLE)  
COOLING: BLOWER COOLED IC416  
DRIVE METHOD: COUPLED OR BELTED  
ACCESSORIES: ENCODER & BRAKE
- CONTINUOUS STALL TORQUE: 96 Nm  
MAX AT 155°C WINDING TEMPERATURE, IN A 40°C AMBIENT
- OPERATING SPEED: 1500 BASE SPEED / 3000 RPM MAX.
- 1024 SINUSOID/REV ENCODER, WITH SINGLE-TURN ABSOLUTE POSITION DATA
- FOR ADDITIONAL SPECIFICATIONS SEE L13M5185ESE
- SHAFT HEIGHT WILL NOT BE EXCEEDED SHIMS UP TO 0.5 MM IN THICKNESS USUALLY REQUIRED FOR COUPLED OR GEARED MACHINES.
- SHAFT EXTENSIONS ARE ACCORDING TO DIN 748. TOLERANCES ARE BASED ON THE ISA FITTING SYSTEM USING K6 FOR DIAMETERS UP TO 50MM AND m6 FOR DIAMETERS ABOVE.
- MAX SHAFT TIR .06 [0.023]
- MAX FACE TIR .13 [0.051]
- MOTOR WEIGHT 193 KG. [426 LBS] (MAY VARY 15%)
- BRAKE RELEASES WHEN VOLTAGE APPLIED



LEAD	460 VOLTS	SERIES	PARALLEL
11	L1	L1	L1
12	L2	L2	L2
13	L3	L3	L3
14	L1	L1	L1
15	L2	L2	L2
16	L3	L3	L3
17	L1	L1	L1
18	L2	L2	L2
19	L3	L3	L3

LEAD	460 VOLT	BRAKE CONNECTION
11	L1	L1
12	L2	L2
13	L3	L3
14	L1	L1
15	L2	L2
16	L3	L3
17	L1	L1
18	L2	L2
19	L3	L3

PIN	FUNCTION	ENCODER CONNECTION
A	SIN +	L1
B	SIN -	L2
C	COS +	L3
D	COS -	L4
E	DATA +	L5
F	DATA -	L6
G-M	-	L7-L13
N	+9 VDC	L14
P	COM	L15
R	TS +	L16
S	TS -	L17
T	-V	L18
U	-	L19

DRIVE END  
SHAFT  
DETAIL  
SPEC (9)

NOTE: ALL DRAWING MODIFICATIONS REQUIRE CUSTOMER APPROVAL

REV	C/R	REVISION DESCRIPTION	DATE	BY

UNLESS OTHERWISE SPECIFIED	UNLESS OTHERWISE SPECIFIED
DO NOT SCALE DRAWING	UNLESS OTHERWISE SPECIFIED
DIMENSIONS ARE IN MILLIMETERS	UNLESS OTHERWISE SPECIFIED
WITH INCHES REFERENCED EXCEPT	UNLESS OTHERWISE SPECIFIED
WHERE SHOWN OTHERWISE	UNLESS OTHERWISE SPECIFIED
THIRD ANGLE PROJECTION	UNLESS OTHERWISE SPECIFIED

DRIVEN BY	DATE	APPROVED BY	DATE

REVISED BY	DATE	DESCRIPTION

SCALE: 1/4" = 1"	DWG. SIZE: C	SHEET: 1 OF 1
------------------	--------------	---------------

DXF FILE AVAILABLE



Allen-Bradley  
PART NO. L13M5185

CATALOG NO. HPK-B1307E-SB44AA-ESM