

**SPECIFICATIONS:**

**1. MOTOR INFORMATION**

MOTOR TYPE: VARIABLE SPEED AC  
 FRAME SIZE: RDL1308Y  
 RATING: 21.6 KW  
 VOLTAGE: 460  
 ENCLOSURE: TOTALLY ENCLOSED IP54  
 MOUNTING: FLANGE (300mm BOLT CIRCLE)  
 COOLING: BLOWER COOLED IC416  
 DRIVE METHOD: COUPLED OR BELTED  
 ACCESSORIES: ENCODER

**2. CONTINUOUS STALL TORQUE:** 141 Nm  
 MAX AT 155°C WINDING TEMPERATURE, IN A 40°C AMBIENT

**3. OPERATING SPEED:** 1500 BASE SPEED / 3000 RPM MAX.

**4. 1024 SINUSOID/REV ENCODER, WITH MULTI-TURN ABSOLUTE POSITION DATA**

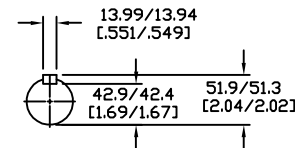
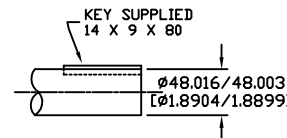
**5. FOR ADDITIONAL SPECIFICATIONS SEE L13M5170ESE**

**6. SHAFT HEIGHT WILL NOT BE EXCEEDED SHIMS UP TO 0.5 MM IN THICKNESS USUALLY REQUIRED FOR COUPLED OR GEARED MACHINES.**

**7. SHAFT EXTENSIONS ARE ACCORDING TO DIN 748, TOLERANCES ARE BASED ON THE ISA FITTING SYSTEM USING k6 FOR DIAMETERS UP TO 50MM AND m6 FOR DIAMETERS ABOVE.**

**8. MAX SHAFT TIR .06 [0.02] MAX FACE TIR .13 [0.005]**

**9. MOTOR WEIGHT 152 KG. [335 LBS] (MAY VARY 15%)**



DRIVE END SHAFT DETAIL SPEC (9)

BLOWER CONNECTION	
STAR CONNECTION	
LEAD	460 VOLTS
U1	R
V1	S
W1	T
U2	
V2	
W2	
GRN/YEL	GROUND
DELTA CONNECTION	
LEAD	230 VOLTS
U1	R
V2	
V1	S
U2	
W1	T
V2	
GRN/YEL	GROUND

PIN-OUT	
ENCODER CONNECTOR	
PIN	FUNCTION
A	SIN +
B	SIN -
C	CDS +
D	CDS -
E	DATA +
F	DATA -
G-M	-
N	+9 VDC
P	COM
R	TS +
S	TS -
T-V	-

MOTOR CONNECTION	
TERMINAL BOX	
LEAD	SOURCE
U1	L1
V1	L2
W1	L3
GREEN	GROUND

NOTE: ALL DRAWING MODIFICATIONS REQUIRE CUSTOMER APPROVAL

REV	C/R	REVISION DESCRIPTION	DATE	BY
UNLESS OTHERWISE SPECIFIED		DRAWN BY	DATE	APPROVED BY
DO NOT SCALE DRAWING		GWS	3/01/06	WEM
DIMENSIONS ARE IN MILLIMETERS		DATE		
WITH INCHES REFERENCED (X.X)		3/01/06		
UNTOLERANCED DIMENSIONS ARE REFERENCE		CATALOG NO.		
THIRD ANGLE PROJECTION		HPK-B1308C-MA42AA-ESM		
Allen-Bradley		PART NO.		
A&B		L13M5170		
SCALE: N/A		DWG SIZE	SHEET	
C		1		OF 1

DXF FILE AVAILABLE

