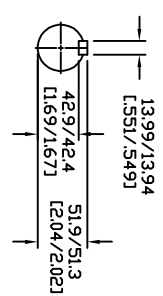
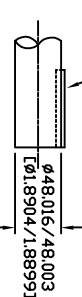
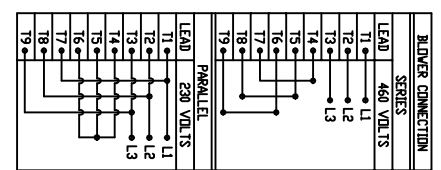


KEY SUPPLIED
14 X 9 X 80



DRIVE END
SHAFT DETAIL
SPEC (9)

- SPECIFICATIONS:**
- MOTOR INFORMATION**
MOTOR TYPE: VARIABLE SPEED AC
FRAME SIZE: RDL1308Y
RATING: 35.7 KW
VOLTAGE: 460
ENCLOSURE: TOTALLY ENCLOSED IP54
MOUNTING: FLANGE (350mm BOLT CIRCLE)
COOLING: BLOWER COOLED IC416
DRIVE METHOD: COUPLED OR BELTED
ACCESSORIES: ENCODER & BRAKE
 - CONTINUOUS STALL TORQUE: 115 Nm
MAX AT 155°C WINDING TEMPERATURE, IN A 40°C AMBIENT
 - OPERATING SPEED: 3000 BASE SPEED / 5000 RPM MAX.
 - 1024 SINUSOID/REV ENCODER, WITH SINGLE-TURN ABSOLUTE POSITION DATA
 - FOR ADDITIONAL SPECIFICATIONS SEE L13M5186SE
 - SHAFT HEIGHT WILL NOT BE EXCEEDED SHIMS UP TO 0.5 MM IN THICKNESS USUALLY REQUIRED FOR COUPLED OR GEARED MACHINES.
 - SHAFT EXTENSIONS ARE ACCORDING TO DIN 748. TOLERANCES ARE BASED ON THE ISA FITTING SYSTEM USING K6 FOR DIAMETERS UP TO 50MM AND m6 FOR DIAMETERS ABOVE.
 - MAX SHAFT TIR .06 [0.023]
 - MAX FACE TIR .13 [0.051]
 - MOTOR WEIGHT 204 KG. [450 LBS] (MAY VARY 15%)
 - BRAKE RELEASES WHEN VOLTAGE APPLIED



LEAD	460 VOLTS	230 VOLTS
11	L1	L1
12	L2	L2
13	L3	L3
14	L1	L1
15	L2	L2
16	L3	L3
17	L1	L1
18	L2	L2
19	L3	L3

LEAD	460 V	230 V
11	U1	L1
12	U2	L2
13	U3	L3
14	V1	L1
15	V2	L2
16	V3	L3
17	W1	L1
18	W2	L2
19	W3	L3

LEAD	460 V	230 V
11	U1	L1
12	U2	L2
13	U3	L3
14	V1	L1
15	V2	L2
16	V3	L3
17	W1	L1
18	W2	L2
19	W3	L3

LEAD	460 V	230 V
11	U1	L1
12	U2	L2
13	U3	L3
14	V1	L1
15	V2	L2
16	V3	L3
17	W1	L1
18	W2	L2
19	W3	L3

LEAD	460 V	230 V
11	U1	L1
12	U2	L2
13	U3	L3
14	V1	L1
15	V2	L2
16	V3	L3
17	W1	L1
18	W2	L2
19	W3	L3

NOTE: ALL DRAWING MODIFICATIONS REQUIRE CUSTOMER APPROVAL

REV	C/R	REVISION DESCRIPTION	DATE	BY

UNLESS OTHERWISE SPECIFIED	SCALE: 1"=1"	DATE: 3/03/06	APPROVED BY: WEM
DO NOT SCALE DRAWING	SCALE: 1"=1"	DATE: 3/03/06	DATE: 3/03/06
DIMENSIONS ARE IN MILLIMETERS	SCALE: 1"=1"	DATE: 3/03/06	DATE: 3/03/06
WITH DIMENSIONS REFERENCED TO DDD	SCALE: 1"=1"	DATE: 3/03/06	DATE: 3/03/06
UNTOLERANCED DIMENSIONS ARE REFERENCE	SCALE: 1"=1"	DATE: 3/03/06	DATE: 3/03/06
THIRD ANGLE PROJECTION	SCALE: 1"=1"	DATE: 3/03/06	DATE: 3/03/06

DXF FILE AVAILABLE

Allen-Bradley

SCALE: 1"=1"

DWG SIZE: C

SHEET: 1 OF 1