

SPECIFICATIONS:

1. MOTOR INFORMATION

MOTOR TYPE: VARIABLE SPEED AC
 FRAME SIZE: RDL1310Y
 RATING: 23.8 KW
 VOLTAGE: 460
 ENCLOSURE: TOTALLY ENCLOSED IP54
 MOUNTING: FLANGE (300mm BOLT CIRCLE)
 COOLING: BLOWER COOLED IC416
 DRIVE METHOD: COUPLED OR BELTED
 ACCESSORIES: ENCODER

2. CONTINUOUS STALL TORQUE: 155 Nm
 MAX AT 155°C WINDING TEMPERATURE, IN A 40°C AMBIENT

3. OPERATING SPEED: 1500 BASE SPEED / 3000 RPM MAX.

4. 1024 SINUSOID/REV ENCODER, WITH SINGLE-TURN ABSOLUTE POSITION DATA

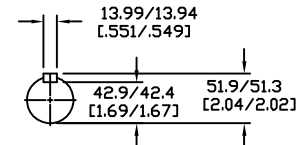
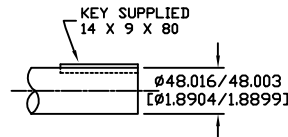
5. FOR ADDITIONAL SPECIFICATIONS SEE L13M5161ESE

6. SHAFT HEIGHT WILL NOT BE EXCEEDED SHIMS UP TO 0.5 MM IN THICKNESS USUALLY REQUIRED FOR COUPLED OR GEARED MACHINES.

7. SHAFT EXTENSIONS ARE ACCORDING TO DIN 748, TOLERANCES ARE BASED ON THE ISA FITTING SYSTEM USING k6 FOR DIAMETERS UP TO 50MM AND m6 FOR DIAMETERS ABOVE.

8. MAX SHAFT TIR .06 [0.02] MAX FACE TIR .13 [0.005]

9. MOTOR WEIGHT 166 KG [366 LBS] (MAY VARY 15%)



DRIVE END SHAFT DETAIL SPEC (9)

BLOWER CONNECTION	
STAR CONNECTION	
LEAD	460 VOLTS
U1	R
V1	S
W1	T
U2	
V2	
W2	
GRN/YEL	GROUND
DELTA CONNECTION	
LEAD	230 VOLTS
U1	R
V2	S
W1	T
U2	
V1	
W2	
GRN/YEL	GROUND

PIN-OUT	
ENCODER CONNECTOR	
PIN	FUNCTION
A	SIN +
B	SIN -
C	CDS +
D	CDS -
E	DATA +
F	DATA -
G-M	-
N	+9 VDC
P	COM
R	TS +
S	TS -
T-V	-

MOTOR CONNECTION	
TERMINAL BOX	
LEAD	SOURCE
U1	L1
V1	L2
W1	L3
GREEN	GROUND

NOTE: ALL DRAWING MODIFICATIONS REQUIRE CUSTOMER APPROVAL

REV	C/R	REVISION DESCRIPTION	DATE	BY
UNLESS OTHERWISE SPECIFIED		DRAWN BY	DATE	APPROVED BY
DO NOT SCALE DRAWING		GWS	3/01/06	WEM
DIMENSIONS ARE IN MILLIMETERS		CATALOG NO.		
WITH INCHES REFERENCED (X.X)		HPK-B1310C-SA42AA-ESM		
UNTOLERANCED DIMENSIONS ARE REFERENCE		PART NO.		
THIRD ANGLE PROJECTION		L13M5161		
Allen-Bradley		SCALE	DWG SIZE	SHEET
A&B		N/A	C	1 OF 1

DXF FILE AVAILABLE

