

SPECIFICATIONS:

1. MOTOR INFORMATION

MOTOR TYPE: VARIABLE SPEED AC
 FRAME SIZE: RDL1609Y
 RATING: 48.4 KW
 VOLTAGE: 460
 ENCLOSURE: TOTALLY ENCLOSED IP54
 MOUNTING: FLANGE (350mm BOLT CIRCLE)
 COOLING: BLOWER COOLED IC416
 DRIVE METHOD: COUPLED OR BELTED
 ACCESSORIES: ENCODER

2. CONTINUOUS STALL TORQUE: 156 Nm
 MAX AT 155°C WINDING TEMPERATURE, IN A 40°C AMBIENT

3. OPERATING SPEED: 3000 BASE SPEED / 5000 RPM MAX.

4. 1024 SINUSOID/REV ENCODER, WITH MULTI-TURN ABSOLUTE POSITION DATA

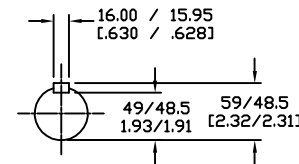
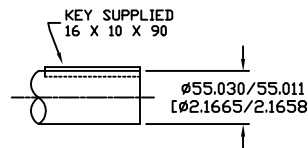
5. FOR ADDITIONAL SPECIFICATIONS SEE L16M5177ESE

6. SHAFT HEIGHT WILL NOT BE EXCEEDED SHIMS UP TO 0.5 MM IN THICKNESS USUALLY REQUIRED FOR COUPLED OR GEARED MACHINES.

7. SHAFT EXTENSIONS ARE ACCORDING TO DIN 748, TOLERANCES ARE BASED ON THE ISA FITTING SYSTEM USING k6 FOR DIAMETERS UP TO 50MM AND m6 FOR DIAMETERS ABOVE.

8. MAX SHAFT TIR .06 [0.02] MAX FACE TIR .13 [0.005]

9. MOTOR WEIGHT 213 KG. [469 LBS] (MAY VARY 15%)



DRIVE END SHAFT DETAIL SPEC (9)

BLOWER CONNECTION	
STAR CONNECTION	LEAD 460 VOLTS
U1	R
V1	S
W1	T
U2	
V2	
W2	
GRN/YEL	GROUND
DELTA CONNECTION	
LEAD	230 VOLTS
U1	R
V2	S
W1	T
U2	
V1	
W2	
GRN/YEL	GROUND

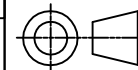
PIN-OUT	
ENCODER CONNECTOR	FUNCTION
A	SIN +
B	SIN -
C	CDS +
D	CDS -
E	DATA +
F	DATA -
G-M	-
N	+9 VDC
P	COM
R	TS +
S	TS -
T-V	-

MOTOR CONNECTION	
LEAD	SOURCE
U1	L1
V1	L2
W1	L3
GREEN	GROUND

NOTE: ALL DRAWING MODIFICATIONS REQUIRE CUSTOMER APPROVAL

REV	C/R	REVISION DESCRIPTION	DATE	BY
		UNLESS OTHERWISE SPECIFIED		
		DO NOT SCALE DRAWING		
		DIMENSIONS ARE IN MILLIMETERS		
		WITH INCHES REFERENCED (X.X)		
		UNTOLERANCED DIMENSIONS ARE REFERENCE		
		THIRD ANGLE PROJECTION		
		DRAWN BY GWS	DATE 3/03/06	APPROVED BY WEM
		CATALOG NO.	HPK-B1609E-MA42AA-ESM	
		PART NO.	L16M5177	
		SCALE: N/A	DWG SIZE C	SHEET 1 OF 1

DXF FILE AVAILABLE



Allen-Bradley