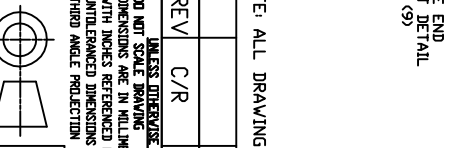
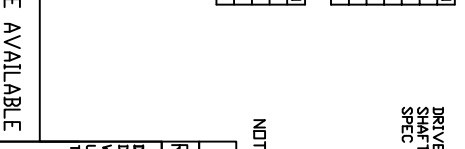
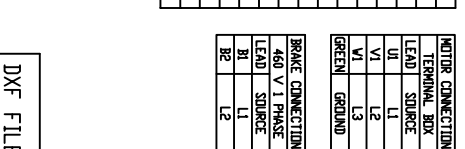
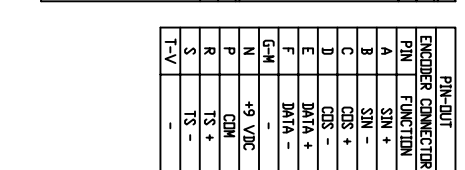
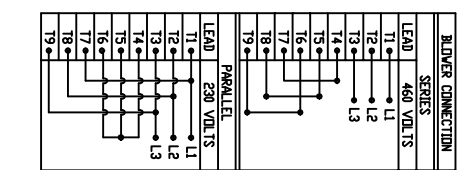


- SPECIFICATIONS:**
- MOTOR INFORMATION**
MOTOR TYPE: VARIABLE SPEED AC
FRAME SIZE: RDL1611Y
RATING: 57 KW
VOLTAGE: 460
ENCLOSURE: TOTALLY ENCLOSED IP54
MOUNTING: FLANGE (350mm BOLT CIRCLED)
COOLING: BLOWER COOLED IC416
DRIVE METHOD: COUPLED OR BELTED
ACCESSORIES: ENCODER & BRAKE
 - CONTINUOUS STALL TORQUE: 183 Nm
MAX AT 155°C WINDING TEMPERATURE, IN A 40°C AMBIENT
 - OPERATING SPEED: 3000 BASE SPEED / 5000 RPM MAX.
 - 1024 SINUSOID/REV ENCODER, WITH SINGLE-TURN ABSOLUTE POSITION DATA
 - FOR ADDITIONAL SPECIFICATIONS SEE L16M5188ESE
 - SHAFT HEIGHT WILL NOT BE EXCEEDED SHIMS UP TO 0.5 MM IN THICKNESS USUALLY REQUIRED FOR COUPLED OR GEARED MACHINES.
 - SHAFT EXTENSIONS ARE ACCORDING TO DIN 748. TOLERANCES ARE BASED ON THE ISA FITTING SYSTEM USING H6 FOR DIAMETERS UP TO 50MM AND M6 FOR DIAMETERS ABOVE.
 - MAX SHAFT TIR .06 (L002J)
MAX FACE TIR .13 (L005J)
 - MOTOR WEIGHT 270 KG. (595 LBS) (MAY VARY 15%)
 - BRAKE: 460VAC 20 Nm MAX. HOLDING TORQUE, BRAKE RELEASES WHEN VOLTAGE APPLIED



REV	C/R	REVISION DESCRIPTION	DATE	BY
		UNLESS OTHERWISE SPECIFIED DO NOT SCALE DRAWING DIMENSIONS ARE IN MILLIMETERS WITH UNLESS REFERENCED EXACT UNLESS OTHERWISE SPECIFIED THIRD ANGLE PROJECTION		
		DRAWN BY: GWS DATE: 3/03/06 CATALOG NO: HPK-B1611E-SB44AA-ESM	APPROVED BY: WEM DATE: 3/06/06	
		PART NO: L16M5188		

DXF FILE AVAILABLE



SCALE: 1/16" = 1" (C)
SHEET 1 OF 1

NOTE: ALL DRAWING MODIFICATIONS REQUIRE CUSTOMER APPROVAL