

**SPECIFICATIONS:**

**1. MOTOR INFORMATION**

- MOTOR TYPE: VARIABLE SPEED AC
- FRAME SIZE: RDL1613Y
- RATING: 417 KW
- VOLTAGE: 460
- ENCLOSURE: TOTALLY ENCLOSED IP54
- MOUNTING: FLANGE (350mm BOLT CIRCLE)
- COOLING: BLOWER COOLED IC416
- DRIVE METHOD: COUPLED OR BELTED
- ACCESSORIES: ENCODER & BRAKE

**2. CONTINUOUS STALL TORQUE: 271 Nm**

- MAX AT 155°C WINDING TEMPERATURE, IN A 40°C AMBIENT

**3. OPERATING SPEED: 1500 BASE SPEED / 3000 RPM MAX.**

- 4. 1024 SINUSOID/REV ENCODER, WITH SINGLE-TURN ABSOLUTE POSITION DATA

**5. FOR ADDITIONAL SPECIFICATIONS SEE L16M5182E**

**6. SHAFT HEIGHT WILL NOT BE EXCEEDED**

- SHIMS UP TO 0.5 MM IN THICKNESS USUALLY REQUIRED FOR COUPLED OR GEARED MACHINES.

**7. SHAFT EXTENSIONS ARE ACCORDING TO DIN 748. TOLERANCES ARE BASED ON THE ISA FITTING SYSTEM USING K6 FOR DIAMETERS UP TO 50MM AND m6 FOR DIAMETERS ABOVE.**

**8. MAX SHAFT TIR .06 L[002]**

**9. MAX FACE TIR .13 L[005]**

**10. MOTOR WEIGHT 305 KG. 1672 LBS (MAY VARY 15%)**

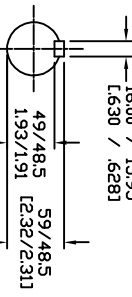
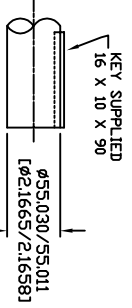
**11. BRAKE RELEASES WHEN VOLTAGE APPLIED**

BLOWER CONNECTION	
LEAD	460 VOLTS
11	L1
12	L2
13	L3
14	L3
15	L3
16	L3
17	L3
18	L3
19	L3

PIN-OUT ENCODER CONNECTION	
PIN	FUNCTION
A	SIN +
B	SIN -
C	COS +
D	COS -
E	DATA +
F	DATA -
G-H	-
N	+9 VDC
P	COM
R	TS +
S	TS -
T-V	-

MOTOR CONNECTION	
LEAD	TERMINAL BOX
U1	L1
V1	L2
W1	L3
	VI (GREEN GROUND)

BRAKE CONNECTION	
LEAD	460 V PHASE
B1	BR
L1	L2



NOTE: ALL DRAWING MODIFICATIONS REQUIRE CUSTOMER APPROVAL

REV	C/R	REVISION DESCRIPTION	DATE	BY
		UNLESS OTHERWISE SPECIFIED		
		DO NOT SCALE DRAWING		
		DIMENSIONS ARE IN MILLIMETERS		
		WITH UNLESS REFERENCED EXACT		
		UNTIL DIMENSIONS ARE REFERENCED		
		THIRD ANGLE PROJECTION		

DESIGNED BY	DATE	APPROVED BY	DATE
DRAWN BY	3/03/06	WEM	3/03/06
CATALOG NO.	HPK-B1613C-SB44AA-ESM		
PART NO.	L16M5182		

DXF FILE AVAILABLE



Allen-Bradley

SCALE: 1/16" = 1"	DWG SIZE: C	SHEET: 1 OF 1
-------------------	-------------	---------------