

SPECIFICATIONS:

1. MOTOR INFORMATION

MOTOR TYPE: VARIABLE SPEED AC
 FRAME SIZE: RDL1613Y
 RATING: 73.7 KW
 VOLTAGE: 460

ENCLOSURE: TOTALLY ENCLOSED IP54
 MOUNTING: FLANGE (350mm BOLT CIRCLE)
 COOLING: BLOWER COOLED IC416
 DRIVE METHOD: COUPLED OR BELTED
 ACCESSORIES: ENCODER & BRAKE

2. CONTINUOUS STALL TORQUE: 237 Nm
 MAX AT 155°C WINDING TEMPERATURE, IN A 40°C AMBIENT

3. OPERATING SPEED: 3000 BASE SPEED / 5000 RPM MAX.

4. 1024 SINUSOID/REV ENCODER, WITH SINGLE-TURN ABSOLUTE POSITION DATA

5. FOR ADDITIONAL SPECIFICATIONS SEE L16M5189ESE

6. SHAFT HEIGHT WILL NOT BE EXCEEDED SHIMS UP TO 0.5 MM IN THICKNESS USUALLY REQUIRED FOR COUPLED OR GEARED MACHINES.

7. SHAFT EXTENSIONS ARE ACCORDING TO DIN 748. TOLERANCES ARE BASED ON THE ISA FITTING SYSTEM USING K6 FOR DIAMETERS UP TO 50MM AND m6 FOR DIAMETERS ABOVE.

8. MAX SHAFT TIR .06 (L002)
 MAX FACE TIR .13 (L005)

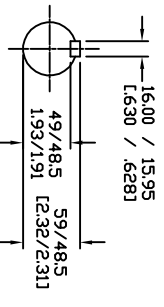
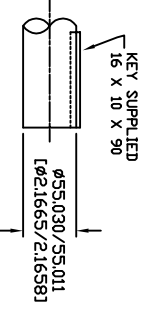
9. MOTOR WEIGHT 305 KG. (672 LBS) (MAY VARY 15%)
10. BRAKE: 460VAC 20 Nm MAX. HOLDING TORQUE, BRAKE RELEASES WHEN VOLTAGE APPLIED

| BLOWER CONNECTION | |
|-------------------|-----------|
| LEAD | 460 VOLTS |
| 11 | L1 |
| 12 | L2 |
| 13 | L3 |
| 14 | L3 |
| 15 | L3 |
| 16 | L3 |
| 17 | L3 |
| 18 | L3 |
| 19 | L3 |

| PIN-OUT ENCODER CONNECTOR | |
|---------------------------|----------|
| PIN | FUNCTION |
| A | SIN + |
| B | SIN - |
| C | COS + |
| D | COS - |
| E | DATA + |
| F | DATA - |
| G-H | - |
| N | +9 VDC |
| P | COM |
| R | TS - |
| S | TS + |
| T | -V |

| MOTOR CONNECTION | |
|------------------|--------|
| TERMINAL BOX | LEAD |
| U1 | L1 |
| V1 | L2 |
| W1 | L3 |
| GREEN | GROUND |

| BRAKE CONNECTION | |
|------------------|------|
| 460 V PHASE | LEAD |
| U1 | L1 |
| V1 | L2 |
| W1 | L3 |



NOTE: ALL DRAWING MODIFICATIONS REQUIRE CUSTOMER APPROVAL

| REV | C/R | REVISION DESCRIPTION | DATE | BY |
|-----|-----|---------------------------------------|------|----|
| | | UNLESS OTHERWISE SPECIFIED | | |
| | | DO NOT SCALE DRAWING | | |
| | | DIMENSIONS ARE IN MILLIMETERS | | |
| | | WITH UNLESS REFERENCED EXACT | | |
| | | UNTOLERANCED DIMENSIONS ARE REFERENCE | | |
| | | THIRD ANGLE PROJECTION | | |

DXF FILE AVAILABLE

Allen-Bradley

HPK-B1613E-SB44AA-ESM

L16M5189

SCALE: 1/4" = 1"

DWG SIZE: C

SHEET: 1 OF 1