

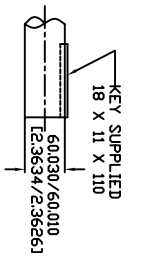
SPECIFICATIONS:

- MOTOR INFORMATION**
 MOTOR TYPE: VARIABLE SPEED AC
 FRAME SIZE: D12212Y
 RATING: 101 KW
 VOLTAGE: 460
 ENCLOSURE: TOTALLY ENCLOSED IP54
 MOUNTING: FOOT
 COOLING: BLOWER COOLED IC416
 DRIVE METHOD: COUPLED OR BELTED
 ACCESSORIES: ENCODER
- CONTINUOUS STALL TORQUE: 650 Nm**
 MAX AT 155°C WINDING TEMPERATURE, IN A 40°C AMBIENT
- OPERATING SPEED: 1500BASE SPEED / 3000 RPM MAX.**
- 1024 SINUSOID/REV ENCODER, WITH MULTI-TURN ABSOLUTE POSITION DATA**
- FOR ADDITIONAL SPECIFICATIONS SEE 10000000238**
- SHAFT HEIGHT WILL NOT BE EXCEEDED**
 SHIMS UP TO 0.5 MM IN THICKNESS USUALLY REQUIRED FOR COUPLED OR GEARED MACHINES.
- SHAFT EXTENSIONS ARE ACCORDING TO DIN 748, TOLERANCES ARE BASED ON THE ISA FITTING SYSTEM USING K6 FOR DIAMETERS UP TO 50MM AND M6 FOR DIAMETERS ABOVE.**
- MAX SHAFT TIR .06 (L002)**
MAX FACE TIR .13 (L005)
- MOTOR WEIGHT 847 KG (1867 LBS) (MAY VARY 15%)**

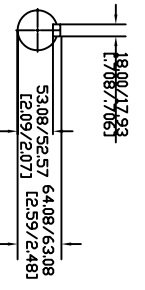
BLOWER CONNECTION	
LEAD	460 VOLTS
T1	L1
T2	L2
T3	L3
T4	-
T5	-
T6	-
T7	-
T8	-
T9	-

ENCODER CONNECTION	
PIN	FUNCTION
A	SIN +
B	SIN -
C	COS +
D	COS -
E	DATA +
F	DATA -
G-H	+9 VDC
N	DN
P	TS +
R	TS -
S	-
T-V	-

MOTOR CONNECTION	
LEAD	TERMINAL BOX
U1	L1
V1	L2
W1	L3
GREEN	GROUND



BORE END SHIM DETAIL SPEC 69



SUPPLIER PART NUMBER: L22M5231

NOTE: ALL DRAWING MODIFICATIONS REQUIRE CUSTOMER APPROVAL

REFERENCES

VERSION/CHANGE NUMBER	TOLERANCES UNLESS OTHERWISE SPECIFIED
	D0 NOT SCALE DRAWING DIMENSIONS ARE IN MILLIMETERS WITH INCHES REFERENCED UNLESS OTHERWISE SPECIFIED
	DIMENSIONS ARE ANGLES PROJECTION

DESCRIPTION	CAD DOCUMENT
HPK-B2212C-MA42BA,ESM	

Rockwell Automation
 Allen-Bradley
 DR. GWS DATE 08-28-06 SHEET 1 OF 1
 DXF FILE AVAILABLE
 DWG SIZE B 100000002556