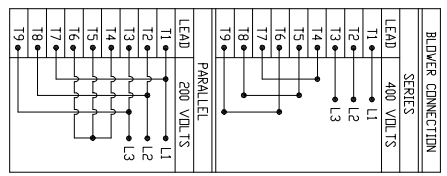


SPECIFICATIONS:

1. MOTOR INFORMATION

- MOTOR TYPE: VARIABLE SPEED AC
- FRAME SIZE: RDL1307Y
- RATING: 17.1 KW
- VOLTAG: 400
- ENCLOSURE: TOTALLY ENCLOSED IP54
- MOUNTING: FLANGE (350mm BOLT CIRCLE)
- COOLING: BLOWER COOLED IC416
- DRIVE METHOD: COUPLED OR BELTED
- ACCESSORIES: ENCODER & BRAKE
- 2. CONTINUOUS STALL TORQUE: 112 Nm
- MAX AT 155°C WINDING TEMPERATURE, IN A 40°C AMBIENT
- 3. OPERATING SPEED: 1500 BASE SPEED / 3000 RPM MAX.
- 4. 1024 SINUSOID/REV ENCODER, WITH SINGLE-TURN ABSOLUTE POSITION DATA
- 5. FOR ADDITIONAL SPECIFICATIONS SEE 10000000385
- 6. SHAFT HEIGHT WILL NOT BE EXCEEDED SHIMS UP TO 0.5 MM IN THICKNESS USUALLY REQUIRED FOR COUPLED OR GEARED MACHINES.
- 7. SHAFT EXTENSIONS ARE ACCORDING TO DIN 748, TOLERANCES ARE BASED ON THE ISA FITTING SYSTEM USING K6 FOR DIAMETERS UP TO 50MM AND m6 FOR DIAMETERS ABOVE.
- 8. MAX SHAFT TIR .06 [0.002]
- MAX FACE TIR .13 [0.005]
- 9. MOTOR WEIGHT 193 KG [426 LBS] (MAY VARY 15%)
- 10. BRAKE: 400VAC 20 Nm MAX. HOLDING TORQUE, BRAKE RELEASES WHEN VOLTAGE APPLIED



ENCODER FUNCTION	PIN	SIGNAL
A	SIN +	SIN +
B	SIN -	SIN -
C	COS +	COS +
D	COS -	COS -
E	DATA +	DATA +
F	DATA -	DATA -
G-M	-	-
N	+9 VDC	+9 VDC
P	COM	COM
R	TS +	TS +
S	TS -	TS -
T-V	-	-

MOTOR CONNECTION	TERMINAL BOX LEAD	SOURCE
U	L1	L1
V	L2	L2
W	L3	L3
GREEN	GROUND	GROUND

BRAKE CONNECTION	LEAD	SOURCE
460 V 1 PHASE	B1	L1
	B2	L2

NOTE: ALL DRAWING MODIFICATIONS REQUIRE CUSTOMER APPROVAL

DESCRIPTION	CAD DOCUMENT
HPK-E1307C-SC44AA,ESM	
<p>Rockwell Automation</p> <p>Supplier Part Number: L13MS281</p>	
<p>Allen-Bradley</p>	

VERSION/CHANGE NUMBER	TOLERANCES UNLESS OTHERWISE SPECIFIED	DO NOT SCALE DRAWING DIMENSIONS ARE IN INCHES UNLESS OTHERWISE SPECIFIED	DR.	AMB	DATE	SHEET	DWG. SIZE	DOCUMENT NUMBER
					09-19-06	1	B	10000000385



DXF FILE AVAILABLE

10000000385