

SPECIFICATIONS:

1. MOTOR INFORMATION

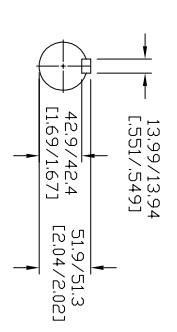
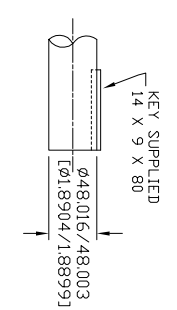
- MOTOR TYPE: VARIABLE SPEED AC
- FRAME SIZE: RDL1308Y
- RATING: 33.5 KW
- VOLTAG: 400
- ENCLOSURE: TOTALLY ENCLOSED IP54
- MOUNTING: FLANGE (350mm BOLT CIRCLE)
- COOLING: BLOWER COOLED IC416
- DRIVE METHOD: COUPLED OR BELTED
- ACCESSORIES: ENCODER & BRAKE
- 2. CONTINUOUS STALL TORQUE: 239 Nm
- MAX AT 155°C WINDING TEMPERATURE, IN A 40°C AMBIENT
- 3. OPERATING SPEED: 3000 BASE SPEED / 5000 RPM MAX.
- 4. 1024 SINUSOID/REV ENCODER, WITH SINGLE-TURN ABSOLUTE POSITION DATA
- 5. FOR ADDITIONAL SPECIFICATIONS SEE 10000000377
- 6. SHAFT HEIGHT WILL NOT BE EXCEEDED SHIMS UP TO 0.5 MM IN THICKNESS USUALLY REQUIRED FOR COUPLED OR GEARED MACHINES.
- 7. SHAFT EXTENSIONS ARE ACCORDING TO DIN 748, TOLERANCES ARE BASED ON THE ISA FITTING SYSTEM USING K6 FOR DIAMETERS UP TO 50MM AND M6 FOR DIAMETERS ABOVE.
- 8. MAX SHAFT TIR .06 (002)
- 9. MOTOR WEIGHT 204 KG. 1500 LBST (MAY VARY 15%)
- 10. BRAKE: 400VAC 20 Nm MAX. HOLDING TORQUE, BRAKE RELEASES WHEN VOLTAGE APPLIED

BLOWER CONNECTION		SERIES	
LEAD	400 VOLTS	LEAD	400 VOLTS
T1	L1	T1	L1
T2	L2	T2	L2
T3	L2	T3	L2
T4	L3	T4	L3
T5	L3	T5	L3
T6	L3	T6	L3
T7	L3	T7	L3
T8	L3	T8	L3
T9	L3	T9	L3

PIN-OUT		ENCODER CONNECTOR	
LEAD	200 VOLTS	PIN	FUNCTION
T1	L1	A	SIN +
T2	L1	B	SIN -
T3	L2	C	CDS +
T4	L2	D	CDS -
T5	L2	E	DATA +
T6	L2	F	DATA -
T7	L2	G-M	DATA -
T8	L2	N	+9 VDC
T9	L2	P	CDM
T10	L2	R	TS +
T11	L2	S	TS -
T12	L2	T-V	-

MOTOR CONNECTION		TERMINAL BOX	
LEAD	SOURCE	UI	LI
V1	L1	V1	L1
V2	L2	V2	L2
V3	L3	V3	L3
V4	L3	V4	L3
V5	L3	V5	L3
V6	L3	V6	L3
V7	L3	V7	L3
V8	L3	V8	L3
V9	L3	V9	L3

BRAKE CONNECTION		460 V 1 PHASE	
LEAD	SOURCE	BI	L1
B1	L1	B1	L1
B2	L2	B2	L2



NOTE: ALL DRAWING MODIFICATIONS REQUIRE CUSTOMER APPROVAL

SUPPLIER PART NUMBER: L13MS288

REFERENCES

VERSION/CHANGE NUMBER	TOLERANCES UNLESS OTHERWISE SPECIFIED
	DO NOT SCALE DRAWING DIMENSIONS ARE IN MILLIMETERS WITH UNFRACTIONATED DIMENSIONS ARE REFERENCED THIRD ANGLE PROJECTION

DESCRIPTION	CAD DOCUMENT
HPK-E1308E-SC44AA,ESM	

Rockwell Automation
Allen-Bradley

DR. AMB DATE 09-19-06 SHEET 1 OF 1
DXF FILE AVAILABLE

10000000397